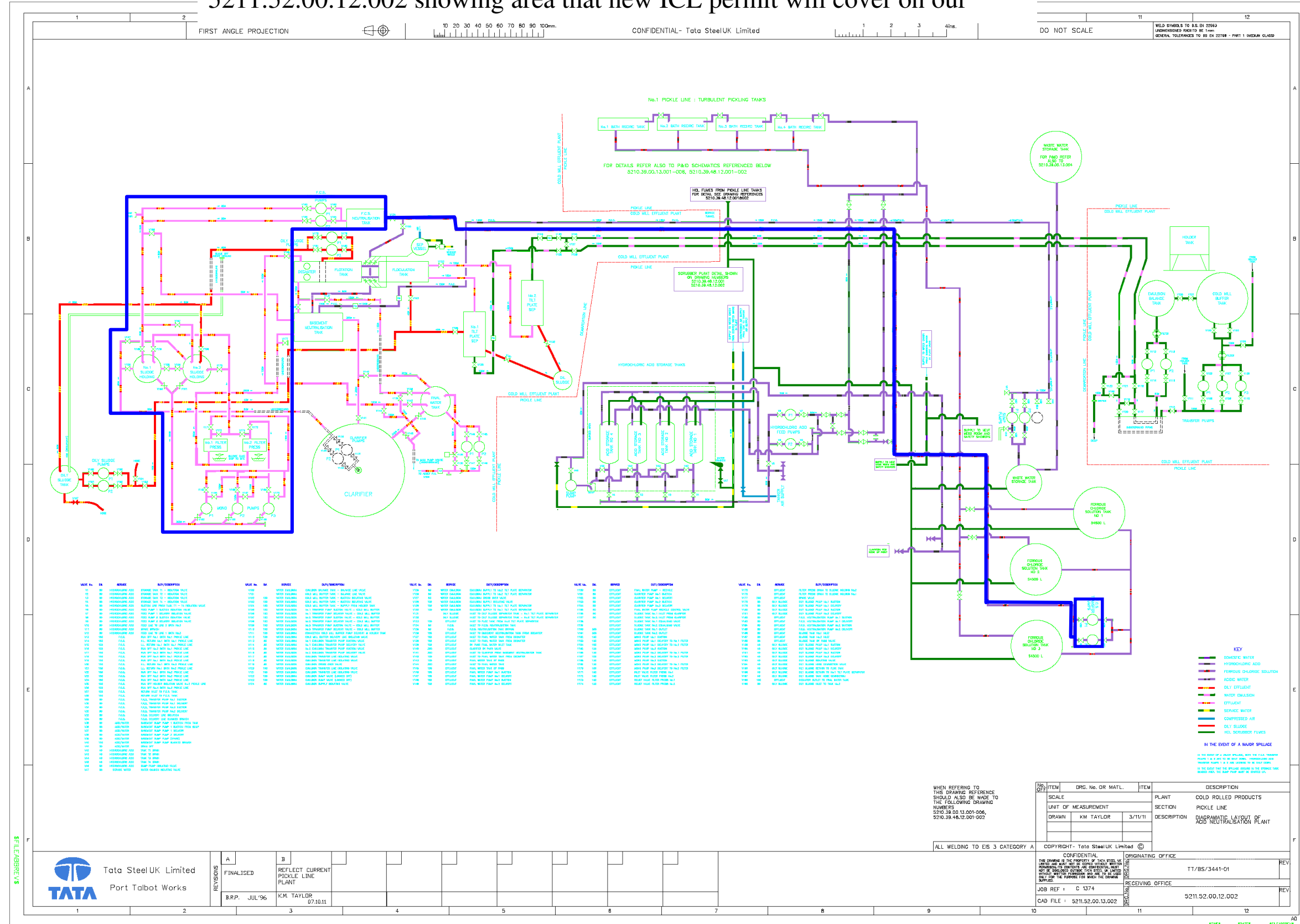


Diagrammatic layout of acid neutralisation plant drawing no 5211.52.00.12.002 showing area that new ICL permit will cover on our



NO.	REV.	DATE	DESCRIPTION	NO.	REV.	DATE	DESCRIPTION	NO.	REV.	DATE	DESCRIPTION	NO.	REV.	DATE	DESCRIPTION
1	1	1996	ISSUED FOR CONSTRUCTION	1	1	1996	ISSUED FOR CONSTRUCTION	1	1	1996	ISSUED FOR CONSTRUCTION	1	1	1996	ISSUED FOR CONSTRUCTION
1	2	1996	ISSUED FOR CONSTRUCTION	1	2	1996	ISSUED FOR CONSTRUCTION	1	2	1996	ISSUED FOR CONSTRUCTION	1	2	1996	ISSUED FOR CONSTRUCTION
1	3	1996	ISSUED FOR CONSTRUCTION	1	3	1996	ISSUED FOR CONSTRUCTION	1	3	1996	ISSUED FOR CONSTRUCTION	1	3	1996	ISSUED FOR CONSTRUCTION
1	4	1996	ISSUED FOR CONSTRUCTION	1	4	1996	ISSUED FOR CONSTRUCTION	1	4	1996	ISSUED FOR CONSTRUCTION	1	4	1996	ISSUED FOR CONSTRUCTION
1	5	1996	ISSUED FOR CONSTRUCTION	1	5	1996	ISSUED FOR CONSTRUCTION	1	5	1996	ISSUED FOR CONSTRUCTION	1	5	1996	ISSUED FOR CONSTRUCTION
1	6	1996	ISSUED FOR CONSTRUCTION	1	6	1996	ISSUED FOR CONSTRUCTION	1	6	1996	ISSUED FOR CONSTRUCTION	1	6	1996	ISSUED FOR CONSTRUCTION
1	7	1996	ISSUED FOR CONSTRUCTION	1	7	1996	ISSUED FOR CONSTRUCTION	1	7	1996	ISSUED FOR CONSTRUCTION	1	7	1996	ISSUED FOR CONSTRUCTION
1	8	1996	ISSUED FOR CONSTRUCTION	1	8	1996	ISSUED FOR CONSTRUCTION	1	8	1996	ISSUED FOR CONSTRUCTION	1	8	1996	ISSUED FOR CONSTRUCTION
1	9	1996	ISSUED FOR CONSTRUCTION	1	9	1996	ISSUED FOR CONSTRUCTION	1	9	1996	ISSUED FOR CONSTRUCTION	1	9	1996	ISSUED FOR CONSTRUCTION
1	10	1996	ISSUED FOR CONSTRUCTION	1	10	1996	ISSUED FOR CONSTRUCTION	1	10	1996	ISSUED FOR CONSTRUCTION	1	10	1996	ISSUED FOR CONSTRUCTION
1	11	1996	ISSUED FOR CONSTRUCTION	1	11	1996	ISSUED FOR CONSTRUCTION	1	11	1996	ISSUED FOR CONSTRUCTION	1	11	1996	ISSUED FOR CONSTRUCTION
1	12	1996	ISSUED FOR CONSTRUCTION	1	12	1996	ISSUED FOR CONSTRUCTION	1	12	1996	ISSUED FOR CONSTRUCTION	1	12	1996	ISSUED FOR CONSTRUCTION

KEY

- SULFURIC ACID
- HYDROCHLORIC ACID
- FERROUS CHLORIDE SOLUTION
- ACIDIC WATER
- SULFUR EFFLUENT
- WATER DRAINAGE
- EFFLUENT
- SERVICE WATER
- COMPRESSED AIR
- SULFUR SLAG
- HYDROCHLORIC FLUDES

IN THE EVENT OF A MAJOR SPILLAGE

In the event of a major spillage, with the full recovery system in place, it is not necessary to shut down the plant. However, if a spillage occurs, the plant should be shut down and the spillage contained. The spillage should be contained and the spillage should not be allowed to spread.

WHEN REFERRING TO THE DRAWING REFERENCE SHOULD ALSO BE MADE TO THE FOLLOWING DRAWING NUMBERS

5210.39.00.13.001-006, 5210.39.48.12.001-002

NO.	REV.	DATE	DESCRIPTION
1	1	1996	ISSUED FOR CONSTRUCTION
1	2	1996	ISSUED FOR CONSTRUCTION
1	3	1996	ISSUED FOR CONSTRUCTION
1	4	1996	ISSUED FOR CONSTRUCTION
1	5	1996	ISSUED FOR CONSTRUCTION
1	6	1996	ISSUED FOR CONSTRUCTION
1	7	1996	ISSUED FOR CONSTRUCTION
1	8	1996	ISSUED FOR CONSTRUCTION
1	9	1996	ISSUED FOR CONSTRUCTION
1	10	1996	ISSUED FOR CONSTRUCTION
1	11	1996	ISSUED FOR CONSTRUCTION
1	12	1996	ISSUED FOR CONSTRUCTION

ALL WELDING TO EIS 3 CATEGORY A

NO.	REV.	DATE	DESCRIPTION
1	1	1996	ISSUED FOR CONSTRUCTION
1	2	1996	ISSUED FOR CONSTRUCTION
1	3	1996	ISSUED FOR CONSTRUCTION
1	4	1996	ISSUED FOR CONSTRUCTION
1	5	1996	ISSUED FOR CONSTRUCTION
1	6	1996	ISSUED FOR CONSTRUCTION
1	7	1996	ISSUED FOR CONSTRUCTION
1	8	1996	ISSUED FOR CONSTRUCTION
1	9	1996	ISSUED FOR CONSTRUCTION
1	10	1996	ISSUED FOR CONSTRUCTION
1	11	1996	ISSUED FOR CONSTRUCTION
1	12	1996	ISSUED FOR CONSTRUCTION

Copyright - Tata Steel UK Limited

NO.	REV.	DATE	DESCRIPTION
1	1	1996	ISSUED FOR CONSTRUCTION
1	2	1996	ISSUED FOR CONSTRUCTION
1	3	1996	ISSUED FOR CONSTRUCTION
1	4	1996	ISSUED FOR CONSTRUCTION
1	5	1996	ISSUED FOR CONSTRUCTION
1	6	1996	ISSUED FOR CONSTRUCTION
1	7	1996	ISSUED FOR CONSTRUCTION
1	8	1996	ISSUED FOR CONSTRUCTION
1	9	1996	ISSUED FOR CONSTRUCTION
1	10	1996	ISSUED FOR CONSTRUCTION
1	11	1996	ISSUED FOR CONSTRUCTION
1	12	1996	ISSUED FOR CONSTRUCTION



NO.	REV.	DATE	DESCRIPTION
1	1	1996	ISSUED FOR CONSTRUCTION
1	2	1996	ISSUED FOR CONSTRUCTION
1	3	1996	ISSUED FOR CONSTRUCTION
1	4	1996	ISSUED FOR CONSTRUCTION
1	5	1996	ISSUED FOR CONSTRUCTION
1	6	1996	ISSUED FOR CONSTRUCTION
1	7	1996	ISSUED FOR CONSTRUCTION
1	8	1996	ISSUED FOR CONSTRUCTION
1	9	1996	ISSUED FOR CONSTRUCTION
1	10	1996	ISSUED FOR CONSTRUCTION
1	11	1996	ISSUED FOR CONSTRUCTION
1	12	1996	ISSUED FOR CONSTRUCTION

NO.	REV.	DATE	DESCRIPTION
1	1	1996	ISSUED FOR CONSTRUCTION
1	2	1996	ISSUED FOR CONSTRUCTION
1	3	1996	ISSUED FOR CONSTRUCTION
1	4	1996	ISSUED FOR CONSTRUCTION
1	5	1996	ISSUED FOR CONSTRUCTION
1	6	1996	ISSUED FOR CONSTRUCTION
1	7	1996	ISSUED FOR CONSTRUCTION
1	8	1996	ISSUED FOR CONSTRUCTION
1	9	1996	ISSUED FOR CONSTRUCTION
1	10	1996	ISSUED FOR CONSTRUCTION
1	11	1996	ISSUED FOR CONSTRUCTION
1	12	1996	ISSUED FOR CONSTRUCTION