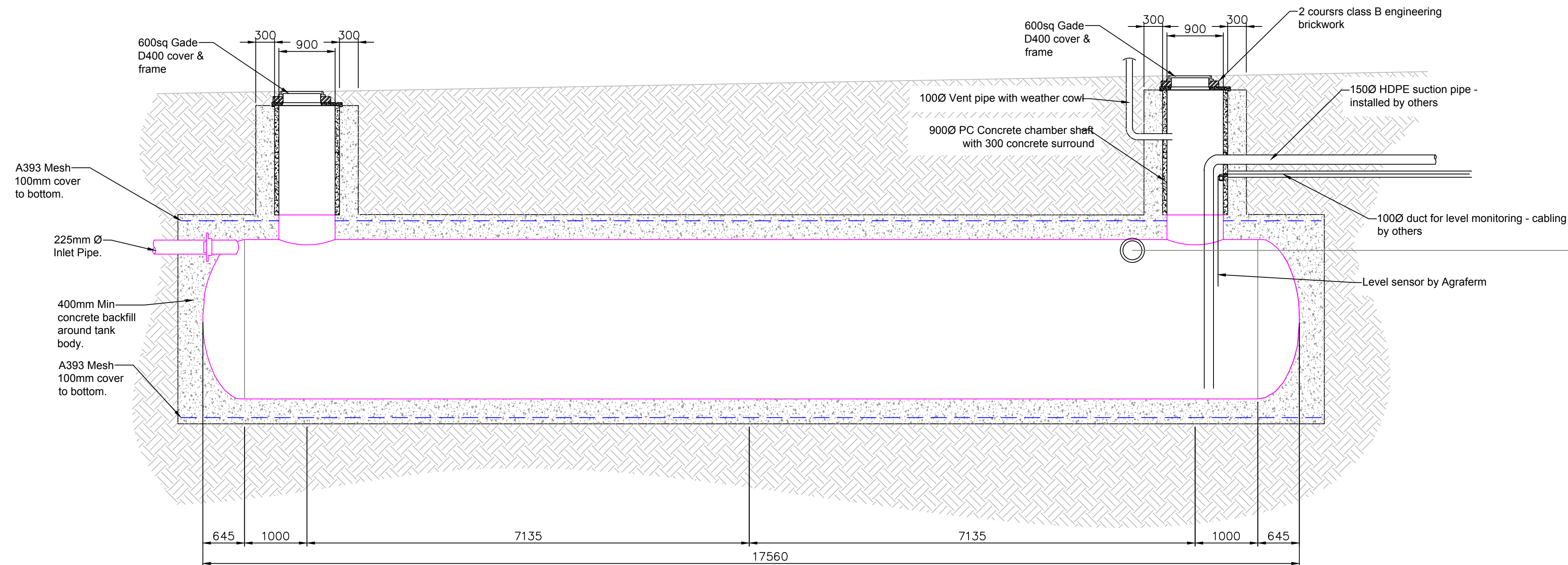
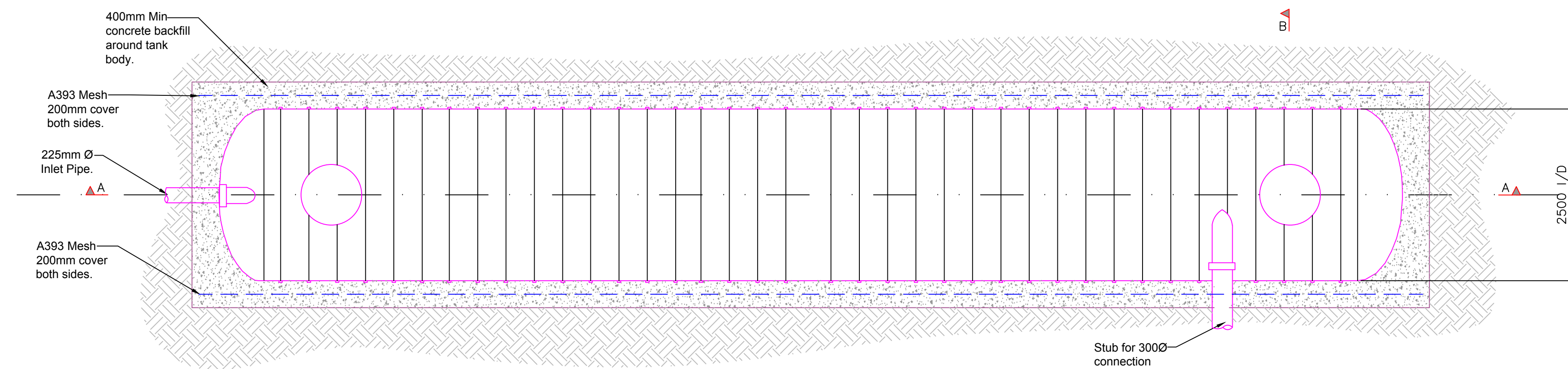


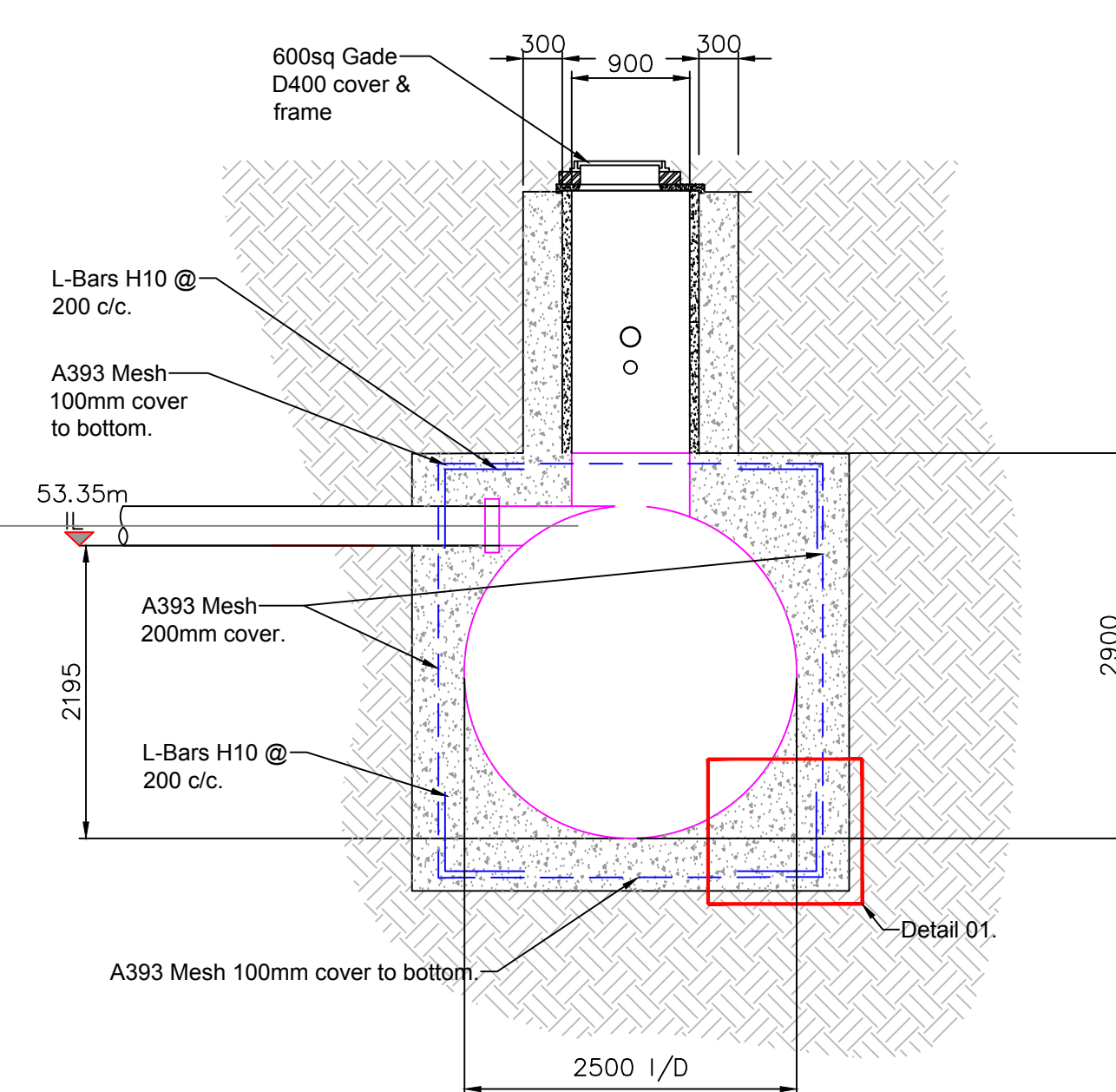
84,000L CONDER SILAGE LEACHATE EFFLUENT TANK
To be Installed in Accordance with
Manufacturers Instructions Including Concrete
Surround, as specified on Conder Technical Data
Sheet UTG 9502



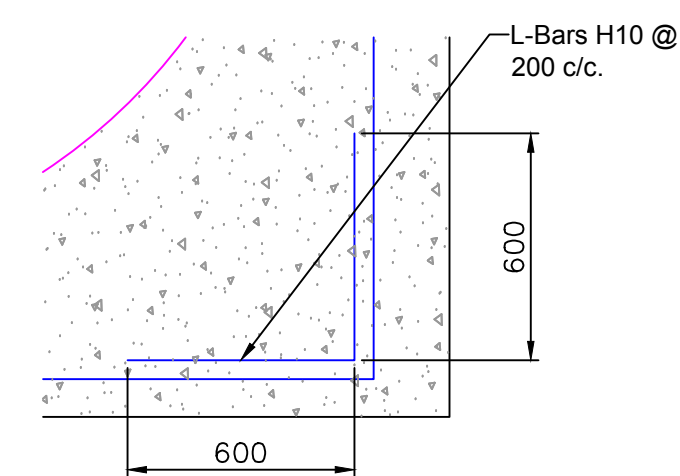
Section A-A
Scale 1:50



Plan View of Leachate Tank
Scale 1:50



Section B-B
Scale 1:50



Detail 1
Scale 1:20

NOTES:

DO NOT SCALE FROM THIS DRAWING.

ALL DIMENSIONS ARE IN MILLIMETRES UNLESS NOTED OTHERWISE.

ALL LEVELS ARE IN METRES.

CONCRETE

STRUCTURAL CONCRETE TO BE DESIGNATED MIX
RC32/40 TO BS8500-2 WITH 20mm FREEZE THAW
RESISTANT AGGREGATE EXCEPT TO THE BUILDING
INTERNAL BUND WALL A-A STEM ABOVE KICKER
LEVEL AND TO THE EXTERNAL CONTAINMENT BUND
WALL WHICH SHALL BE C35A TO BS8007 (OR
APPROVED BS 8500-2 EQUIVALENT).

CONCRETE BLINDING TO BE C16/20.

ALL CONCRETE WORK TO BE IN ACCORDANCE WITH BS 8500 AND THE SPECIFICATION.

25mm x 25mm CHAMFER TO BE PROVIDED TO ALL EXPOSED CORNERS.

THE CONTRACTOR SHALL SUBMIT PROPOSALS FOR THE WALL AND SLAB CONSTRUCTION SEQUENCE INCLUDING MEASURES FOR CURING AND THE AVOIDANCE OF SHRINKAGE CRACKS.

HYDROPHYLIC JOINTS SHALL USE SIKA HYDROTITE CJ STRIP INSTALLED IN ACCORDANCE WITH THE MANUFACTURERS RECOMMENDATIONS.

REINFORCEMENT

ALL REINFORCEMENT TO HAVE MINIMUM 40mm COVER.

BAR LAPS TO BE MINIMUM 40 x DIAMETER OF SMALLER BAR.

A393 MESH TO HAVE MINIMUM 400mm LAP.

T - TOP, B - BOTTOM.

THE DESIGNATION H DENOTES DEFORMED HIGH YIELD
STEEL BARS IN GRADE 500 TO BS 4449.

WHERE REINFORCEMENT IS ASSIGNED A LAYER NUMBER,
LAYER 1 IS THAT NEAREST THE FACE OF THE
CONCRETE.

INSERTS SHALL BE PROVIDED AS NECESSARY, INCLUDING SUPPORT FOR MASONRY AND SERVICES. REINFORCEMENT SHALL BE ADJUSTED TO SUIT. PLASTIC TAPE SHALL BE USED TO PREVENT CONTACT OF DISSIMILAR METALS. DO NOT CUT REINFORCEMENT AT INSERTS WITHOUT PRIOR AGREEMENT.

D	ISSUED FOR CONSTRUCTION	JE	JES	AS	19.11.15
C	ISSUED FOR CONSTRUCTION	DRM	JES	AS	05.06.15
B	ISSUED FOR CONSTRUCTION	DRM	JES	AS	05.06.15
REV	MODIFICATIONS	BY	CH	AP	DATE

Agraferm Technologies

AD Plant Mona

LEACHATE TANK DETAILS

DRAWN BY DRM	DATE 16.04.15	
CHECKED BY JES	SCALE ϕ A1 AS SHOWN	
APPROVED BY AS	ISSUE Cn	REVISION D

2341-PH2-6006

Caulmert
Engineering, Environmental and Planning