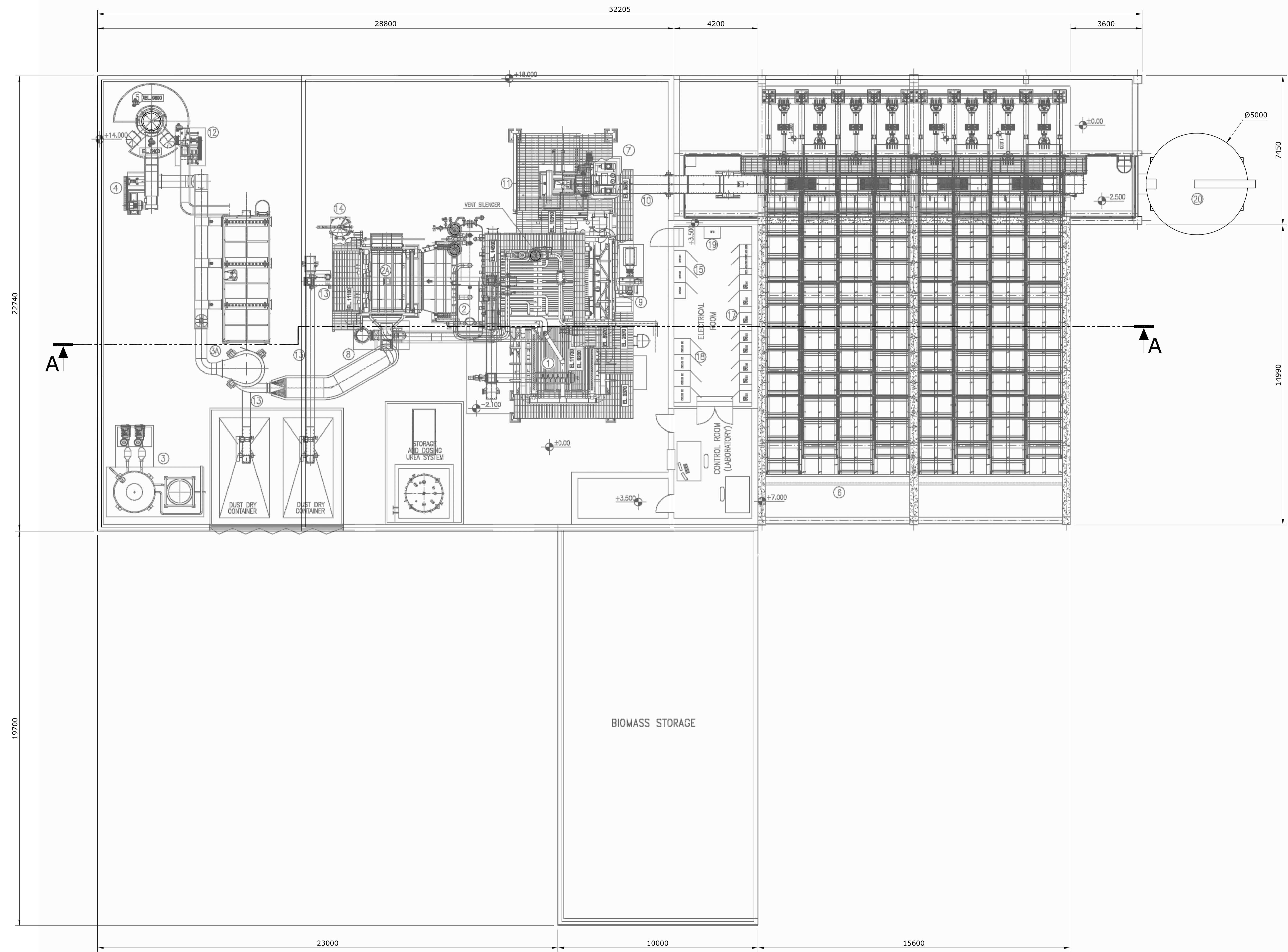


ALL INFORMATION ON THIS DRAWING IS INDICATIVE ONLY, AND MAY BE SUBJECT TO FURTHER DESIGN DEVELOPMENT.
DO NOT SCALE

NOTES:
For Cross Section A-A please refer to Dwg No. 1774-013.

- LEGEND:-
1. COMBUSTION SECTION
 2. BOILER
 - 2A. ECO / AIR PREHEATER
 3. CHEMICALS DOSING UNIT
 - 3A. FLUE GAS TREATMENT SYSTEM
 4. FLUE GAS EXTRACTION FAN
 5. STACK
 6. BIOMASS STORAGE AREA WITH MOVING FLOOR
 7. HYDRAULIC UNIT
 8. COMBUSTION PRIMARY AIR FAN
 9. COMBUSTION SECONDARY AIR FAN
 10. BIOMASS CONVEYOR
 11. FEEDING CHANNEL
 12. FLUE GAS RECIRCULATION FAN
 13. ASH CONVEYOR
 14. BLOW DOWN TANK 1000l
 15. BOILER CONTROL PANEL
 16. AUXILIARY BURNER
 17. BOILER MCC
 18. BOILER FREQUENCY CONVERTOR PANEL
 19. UPS
 20. PELLET SILO



REV.	DETAILS OF REVISION	DTW	RO	DATE
R1	PRELIMINARY	DTW	RO	20.11.15



CLIENT: SOFIDEL
SITE: INTERTISSUE NEATH
PROJECT: INTERTISSUE BIOMASS BOILER
TITLE: FACILITY FLOOR PLAN

DRAWING STATUS:	PRELIMINARY
DRAWN BY:	DTW DATE: 20.11.15
CHECKED BY:	RO DATE: 20.11.15
FILENAME:	1774-012-R1.DWG
OFFICE OF ISSUE:	STOCKPORT
SHEET SIZE:	A1 SCALE: 1:100
DRAWING No.:	1774-012
REVISION:	R1