



Awel y Môr Offshore Wind Farm

Category 6: Environmental Statement

Volume 6, Annex 10.4: SLVIA Figures - Figure 1 (Array area and SLVIA Study Area with Cumulative Developments)

Date: April 2022

Revision: A

Application Reference: 6.6.10.4.1

Pursuant to: APFP Regulation 5(2)(a)



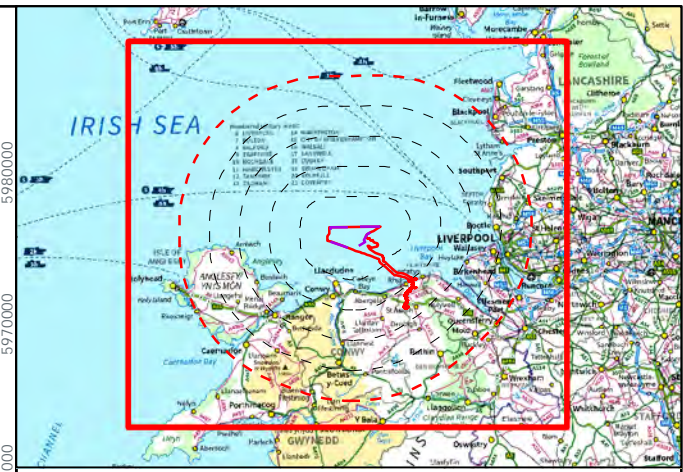
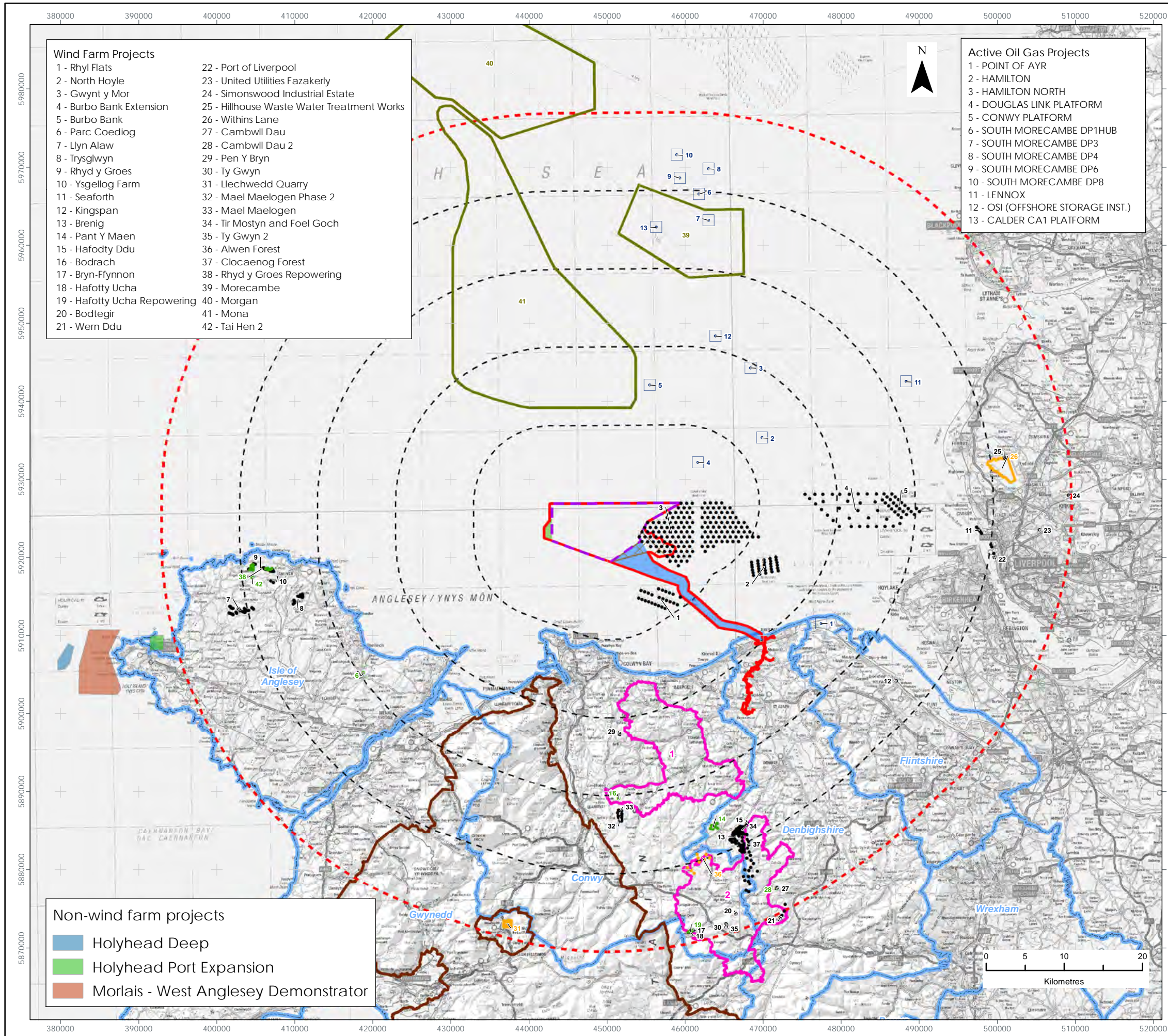
REVISION	DATE	STATUS/ REASON FOR ISSUE	AUTHOR:	CHECKED BY:	APPROVED BY:
A	April 2022	ES	OPEN	SLR/GoBe	RWE

www.awelymor.cymru

RWE Renewables UK
Swindon Limited

Windmill Hill Business Park
Whitehill Way
Swindon
Wiltshire SN5 6PB
T +44 (0)8456 720 090
www.rwe.com

Registered office:
RWE Renewables UK
Swindon Limited
Windmill Hill Business Park
Whitehill Way
Swindon



LEGEND

- Order Limits
- Other Wind Farm Infrastructure Zone
- Offshore Export Cable Corridor
- GyM Interlink Zone
- Array Area
- 10km Radii
- 50km Study Area
- Active Oil Gas project
- Snowdonia National Park
- District Boundary (Wales only)
- Cumulative Wind Farms
 - Consented
 - Operational
 - Scoping
 - Round 4 Bidding Areas
 - Policy 17 - Pre-Assessed Areas for Wind Energy

Data Source:
Contains OS data © Crown copyright and database right (2021).
© Crown copyright. All rights reserved. (2021). Ordnance Survey Licence 0100031673

PROJECT TITLE:
AWEL Y MÔR OFFSHORE WINDFARM

FIGURE TITLE:
Array Area and SLVIA Study Area with Cumulative Developments

VER	DATE	REMARKS	Drawn	Checked
1	08/03/2022	For Issue	JM	LT

FIGURE NUMBER:
Figure 1

SCALE:	1:500,000	PLOT SIZE:	A3	DATUM:	WGS84	PROJECTION:	UTM30N
--------	-----------	------------	----	--------	-------	-------------	--------





RWE Renewables UK
Swindon Limited

Windmill Hill Business Park
Whitehill Way
Swindon
Wiltshire SN5 6PB
T +44 (0)8456 720 090
www.rwe.com

Registered office:
RWE Renewables UK
Swindon Limited
Windmill Hill Business Park
Whitehill Way
Swindon