



# Awel y Môr Offshore Wind Farm

## Category 6: Environmental Statement

### Volume 4, Annex 2.4: Seafloor and Shallow Geological Results (Array) (Part 6)

**Date: April 2022**

**Revision: A**

Application Reference: 6.4.2.4.6

Pursuant to: APFP Regulation 5(2)(a)



REVISION	DATE	STATUS/ REASON FOR ISSUE	AUTHOR:	CHECKED BY:	APPROVED BY:
A	March 2022	ES	Fugro	RWE	RWE

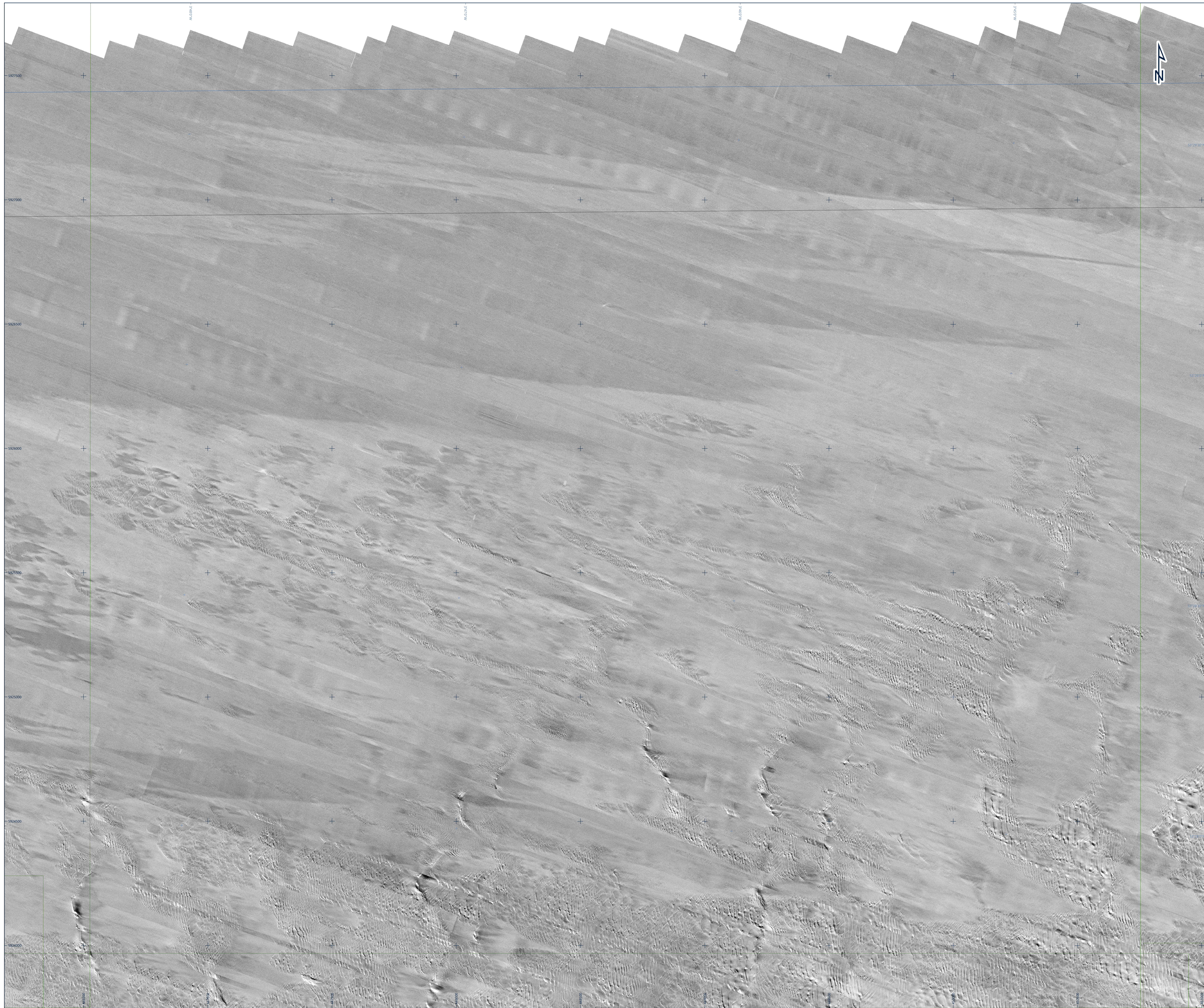
[www.awelymor.cymru](http://www.awelymor.cymru)

RWE Renewables UK  
Swindon Limited

Windmill Hill Business Park  
Whitehill Way  
Swindon  
Wiltshire SN5 6PB  
T +44 (0)8456 720 090  
[www.rwe.com](http://www.rwe.com)

Registered office:  
RWE Renewables UK  
Swindon Limited  
Windmill Hill Business Park  
Whitehill Way  
Swindon





### Legend

- ⊕ UTM Grid
- ⊕ Geographical Grid
- Chart Extent
- Wind Farm Extent
- Array Survey Extent
- Export Cable Route Survey Extent

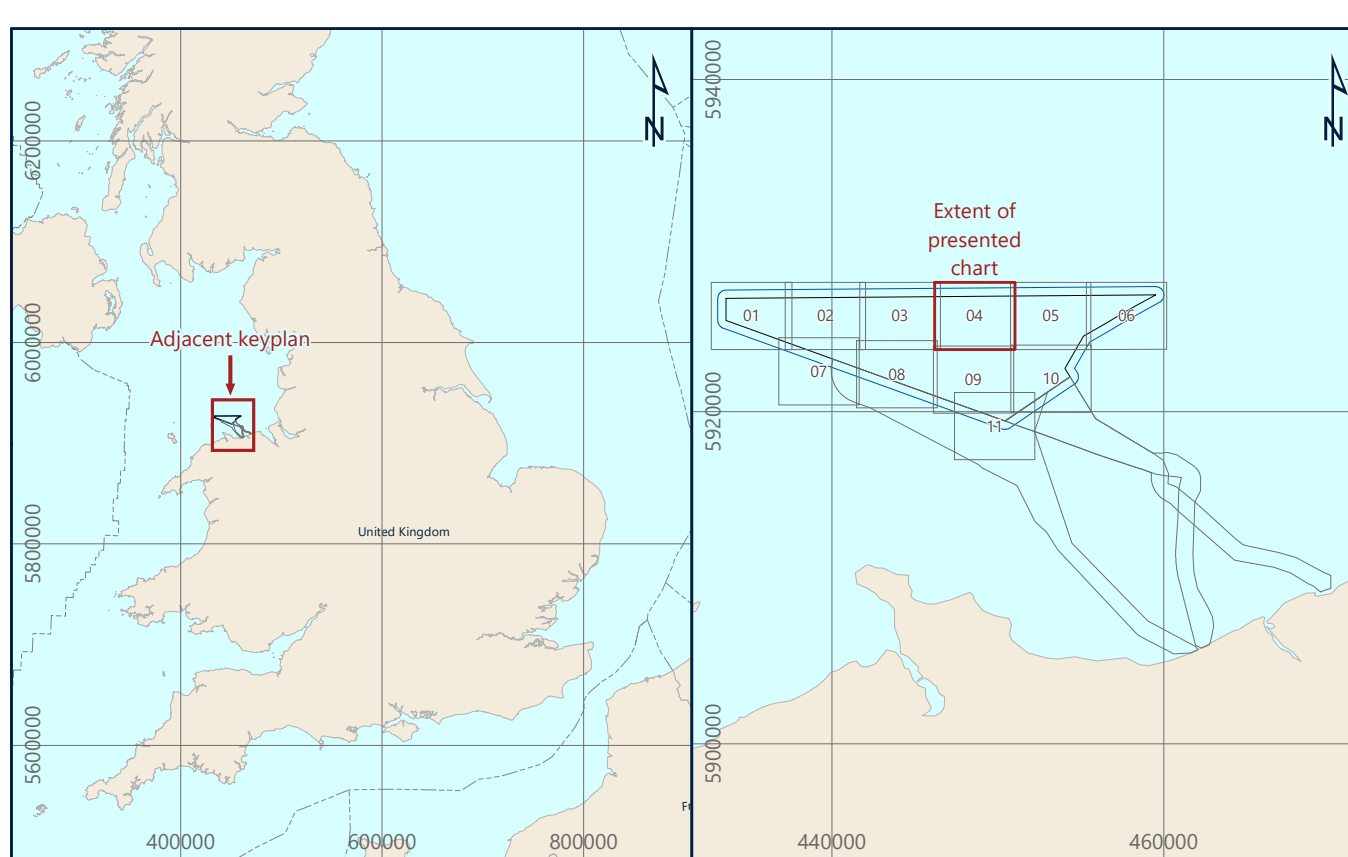
### Notes

1) Side scan sonar mosaic created from Edgetech 4205 simultaneous 91-frequency (230 / 540 / 850 kHz), processed with a 0.1 m cell size.

This document may only be used for the purposes for which it was commissioned and in accordance with the terms of engagement for that commission. Unauthorised use of this document is strictly prohibited.

### Geodetic Parameters

Geodetic datum		World Geodetic System 1984
Ellipsoid	WGS84	
Semi-Major Axis	6,378,137.000 m	
Inverse Flattening	298.257222563	
Projection		WGS84 / UTM Zone 30N (EPSG: 32630)
Central Meridian (CM)	03°00'00" W	
Latitude of Origin	00°00'00" N	
Fake Easting	500,000 mE	
Fake Northing	0 mN	
Scale Factor at CM	0.9996	
Vertical datum		Lowest Astronomical Tide (LAT) - calculated using the Vertical Offshore Reference Frame (VORF)



**Awel Y Môr Offshore Wind Farm Ltd**  
Trigones Bldg, Windmill Hill Business Park, Whitwell Way, Sandown, OX6 6PE, United Kingdom

AWEL Y MÔR

**Fugro**  
Victory House, Tudorgr Wharf (A1), 161, Hamilton Road, Porchester PO6 4PX  
 Tel: +44 23 9230 3500

**SIDE SCAN SONAR MOSAIC**  
**AWEL Y MÔR OFFSHORE WIND FARM**  
**GEOPHYSICAL SURVEY 2020**  
**UK IRISH SEA**

Scale 1 : 5,000 at original A0 page size

Issue	Date	Status	Interpreted	Prepared	Checked	Approved
01	07 October 2020	Draft Issue - Revision 1	OOT	DS	SB	BPT
02	01 December 2020	Final Issue - Revision 2	OOT	DS	SB	BPT
03	04 February 2021	Final Release - Revision 3	OOT	DS	SB	BPT

Fugro Project No.	Vessel(s)	Survey Date
200655	Fugro Mercator	10 June to 11 August 2020
File Name		Chart No.
200655_Array_SideScanSonarMosaic_04		04 of 11





RWE Renewables UK  
Swindon Limited

Windmill Hill Business Park  
Whitehill Way  
Swindon  
Wiltshire SN5 6PB  
T +44 (0)8456 720 090  
[www.rwe.com](http://www.rwe.com)

Registered office:  
RWE Renewables UK  
Swindon Limited  
Windmill Hill Business Park  
Whitehill Way  
Swindon