



Awel y Môr Offshore Wind Farm

Category 6: Environmental Statement

Volume 6, Annex 10.4: SLVIA Figures - Figure 10a (Snowdonia National Park Baseline Light Pollution)

Date: April 2022

Revision: A

Application Reference: 6.6.10.4.13

Pursuant to: APFP Regulation 5(2)(a)



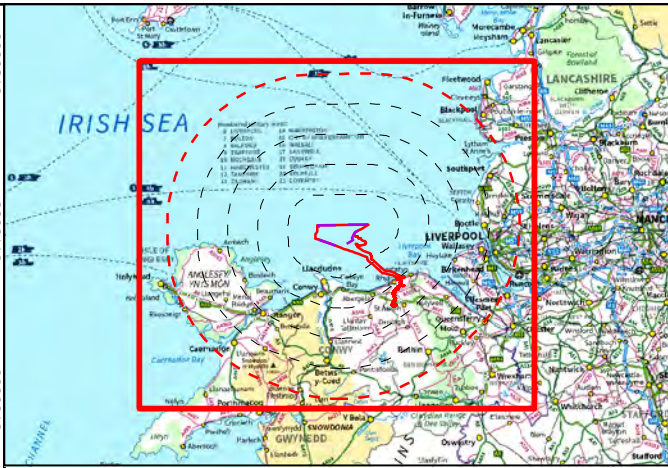
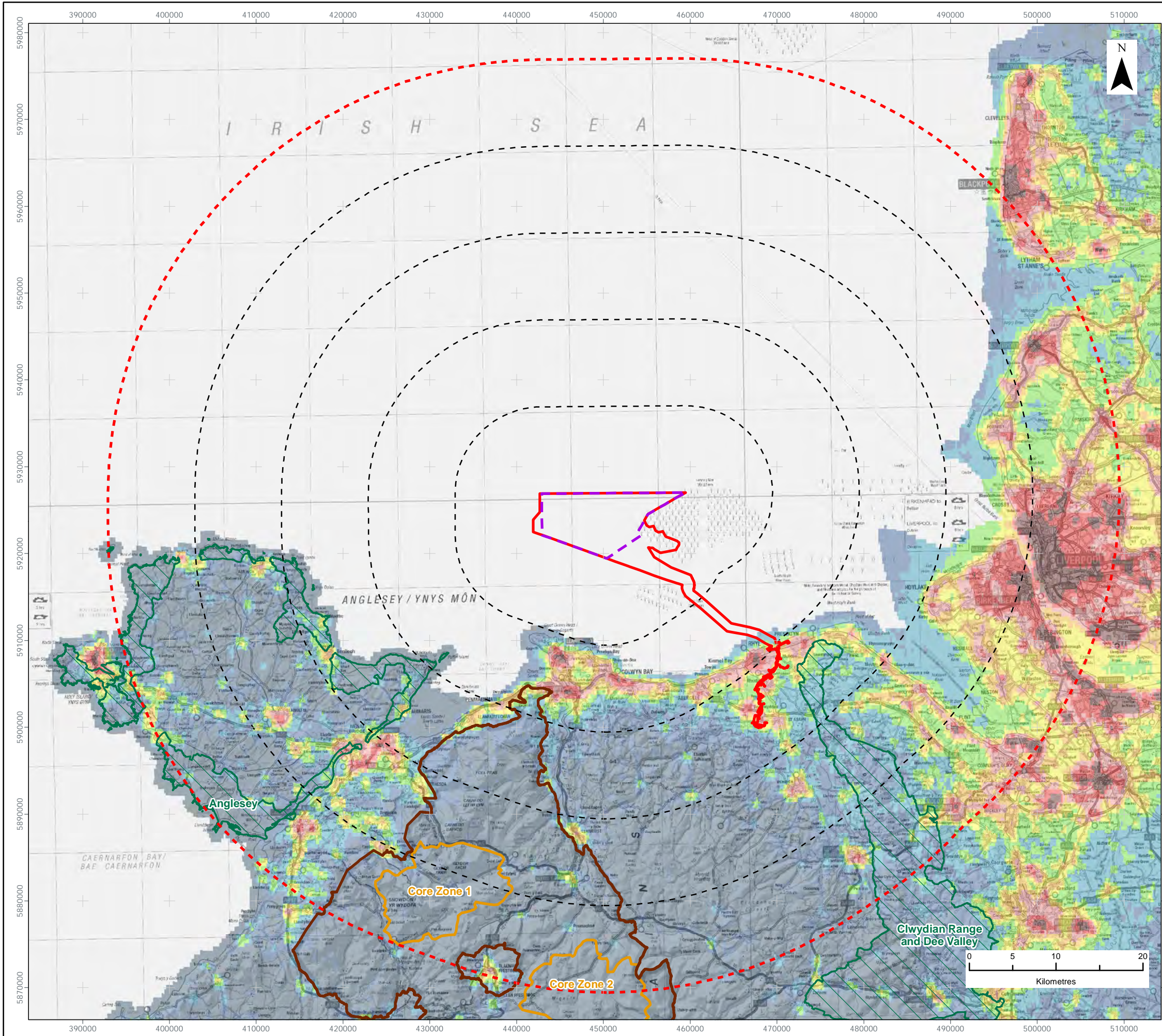
REVISION	DATE	STATUS/ REASON FOR ISSUE	AUTHOR:	CHECKED BY:	APPROVED BY:
A	April 2022	ES	OPEN	SLR/GoBe	RWE

www.awelymor.cymru

RWE Renewables UK
Swindon Limited

Windmill Hill Business Park
Whitehill Way
Swindon
Wiltshire SN5 6PB
T +44 (0)8456 720 090
www.rwe.com

Registered office:
RWE Renewables UK
Swindon Limited
Windmill Hill Business Park
Whitehill Way
Swindon



- LEGEND**
- Order Limits
 - Array Area
 - 10km Radii
 - 50km Study Area
 - Snowdonia National Park
 - Snowdonia National Park Core Zone
 - Area of Outstanding Natural Beauty

Night Lights
(NanoWatts / cm² /sr)

>32 (high)	1 - 2
16 - 32	0.5 - 1
8 - 16	0.25 - 0.5
4 - 8	< 0.25 (low)
2 - 4	

Data Source:
Contains OS data © Crown copyright and database right (2021). © Crown copyright, All rights reserved. (2021). Ordnance Survey Licence 0100031673. Contains public sector information licensed under the terms of the Open Government Licence v.3.0.
© Earth Observation Group, NOAA National Geophysical Data Center. Data processed by LUC on behalf of CPRE.

PROJECT TITLE:
AWEL Y MÔR OFFSHORE WINDFARM

FIGURE TITLE:
Baseline Light Pollution

VER	DATE	REMARKS	Drawn	Checked
1	08/03/2022	For Issue	JM	LT

FIGURE NUMBER:
Figure 10a

SCALE:	1:450,000	PLOT SIZE:	A3	DATUM:	WGS84	PROJECTION:	UTM30N
--------	-----------	------------	----	--------	-------	-------------	--------





RWE Renewables UK
Swindon Limited

Windmill Hill Business Park
Whitehill Way
Swindon
Wiltshire SN5 6PB
T +44 (0)8456 720 090
www.rwe.com

Registered office:
RWE Renewables UK
Swindon Limited
Windmill Hill Business Park
Whitehill Way
Swindon