



Awel y Môr Offshore Wind Farm

Category 6: Environmental Statement

**Volume 6, Annex 10.4: SLVIA
Figures - Figure 2b (Maximum
Design Scenario B (252m blade
tip))**

Date: April 2022

Revision: A

Application Reference: 6.6.10.4.3

Pursuant to: APFP Regulation 5(2)(a)



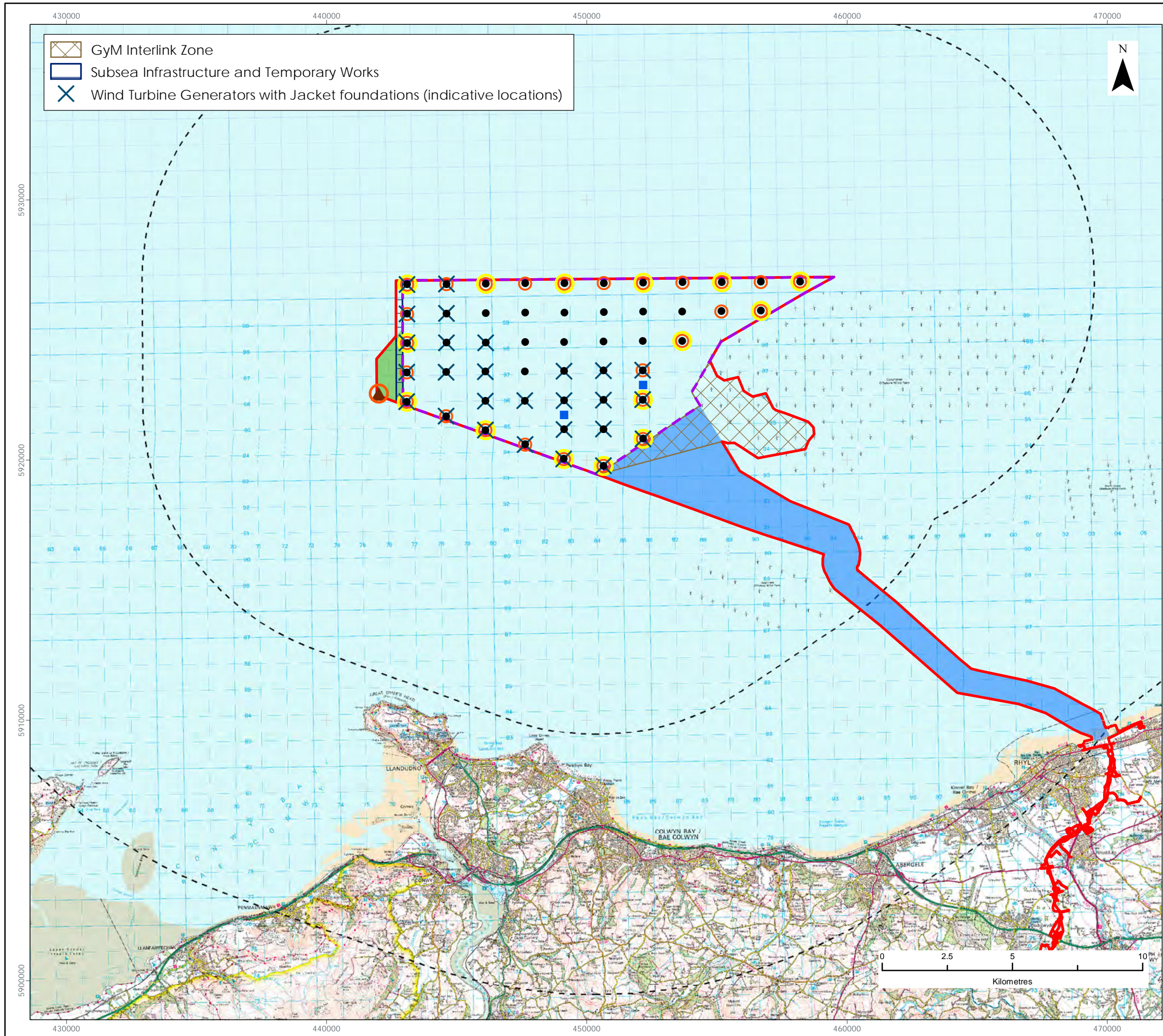
| REVISION | DATE | STATUS/ REASON FOR ISSUE | AUTHOR: | CHECKED BY: | APPROVED BY: |
|----------|---------------|--------------------------------|---------|----------------|-----------------|
| A | April 2022 | ES | OPEN | SLR/GoBe | RWE |
| | | | | | |
| | | | | | |
| | | | | | |

www.awelymor.cymru

RWE Renewables UK
Swindon Limited

Windmill Hill Business Park
Whitehill Way
Swindon
Wiltshire SN5 6PB
T +44 (0)8456 720 090
www.rwe.com

Registered office:
RWE Renewables UK
Swindon Limited
Windmill Hill Business Park
Whitehill Way
Swindon



LEGEND

- Order Limits
- Other Wind Farm Infrastructure Zone
- Offshore Export Cable Corridor
- Array Area
- 10km Radii
- 50km Study Area
- Wind Turbine Generators (indicative locations)
- Marine navigation significant peripheral structure lighting (flashing yellow, 5Nm nominal range)
- Civil Aviation perimeter lighting (flashing/steady red, 2000/200 candela)
- Offshore Substations (indicative locations)
- Marine navigation isolated structure lighting of met mast (flashing white, 10Nm nominal range)

Data Source:
Contains OS data © Crown copyright and database right (2021).
© Crown copyright. All rights reserved. (2021). Ordnance Survey Licence 0100031673

PROJECT TITLE:
AWEL Y MÔR OFFSHORE WINDFARM

FIGURE TITLE:
**Alternative Design Scenario B
(282m Blade Tip)**

| VER | DATE | REMARKS | Drawn | Checked |
|-----|------------|-----------|-------|---------|
| 1 | 08/03/2022 | For Issue | JM | LT |

FIGURE NUMBER:
Figure 2b

| | | | |
|------------------|---------------|--------------|--------------------|
| SCALE: 1:150,000 | PLOT SIZE: A3 | DATUM: WGS84 | PROJECTION: UTM30N |
|------------------|---------------|--------------|--------------------|

Fferm Wynt Alltraeth
AWEL Y MÔR
Offshore Wind Farm



RWE Renewables UK
Swindon Limited

Windmill Hill Business Park
Whitehill Way
Swindon
Wiltshire SN5 6PB
T +44 (0)8456 720 090
www.rwe.com

Registered office:
RWE Renewables UK
Swindon Limited
Windmill Hill Business Park
Whitehill Way
Swindon