



Awel y Môr Offshore Wind Farm

Category 6: Environmental Statement

**Volume 6, Annex 10.4: SLVIA Figures
- Figure 16c (Blade Tip ZTV (MDS A)
with Landscape Character and
Viewpoint Locations)**

Date: April 2022

Revision: A

Application Reference: 6.6.10.4.25

Pursuant to: APFP Regulation 5(2)(a)



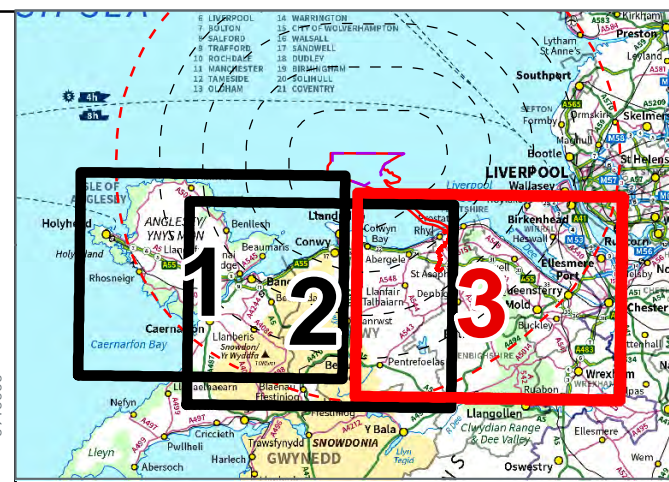
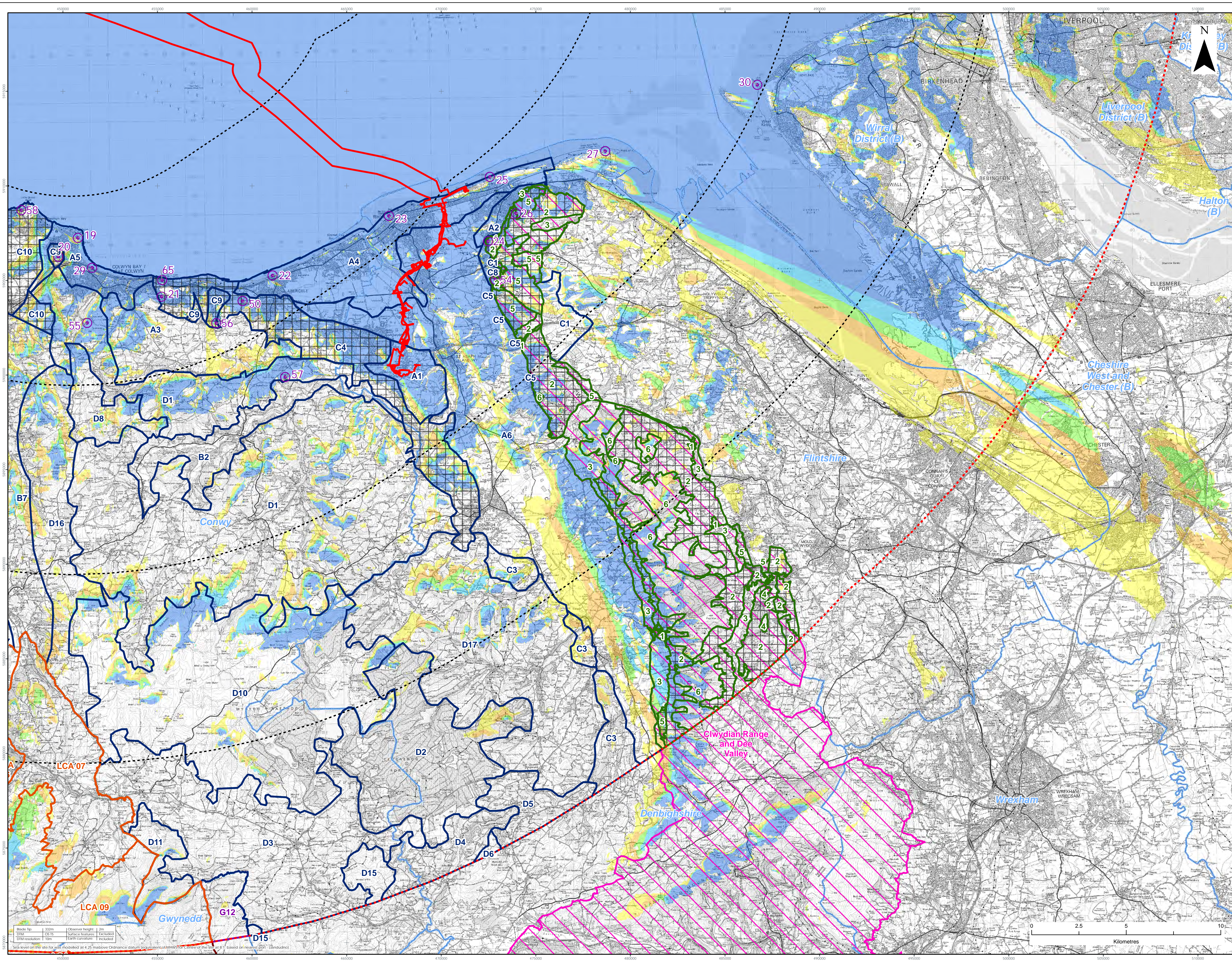
REVISION	DATE	STATUS/ REASON FOR ISSUE	AUTHOR:	CHECKED BY:	APPROVED BY:
A	April 2022	ES	OPEN	SLR/GoBe	RWE

www.awelymor.cymru

RWE Renewables UK
Swindon Limited

Windmill Hill Business Park
Whitehill Way
Swindon
Wiltshire SN5 6PB
T +44 (0)8456 720 090
www.rwe.com

Registered office:
RWE Renewables UK
Swindon Limited
Windmill Hill Business Park
Whitehill Way
Swindon



LEGEND

- Order Limits
- Array Area
- 10km Radii
- 50km Study Area
- Viewpoint Location
- District Boundary
- Snowdonia National Park
- Heritage Coast
- Area of Outstanding Natural Beauty
- Landscape Character
 - Clwydian Range and Dee Valley AONB
 - Conwy & Denbighshire
 - Gwynedd
 - Snowdonia National Park
 - Landscape Character identified for detailed assessment
- Zone of Theoretical Visibility (Blade Tip)
- No. of Turbines Theoretically Visible
 - 1 - 7
 - 8 - 14
 - 15 - 21
 - 22 - 28
 - 29 - 34
- Viewpoints
 - 19. Rhos-on-Sea
 - 20. Bryn Eryn
 - 21. Mynydd Marian
 - 22. Abergele promenade
 - 23. Rhyll Aquarium
 - 24. Graig Fawr
 - 25. Prestatyn Nova Centre
 - 26. Bryn-Ikyn Viewpoint (Prestatyn Hillside viewpoint, Gwaenysgor)
 - 27. Point of Ay
 - 29. Colwyn Bay promenade
 - 30. Hiller Point
 - 50. Gwynch Castle - Terrace
 - 54. y Foel (Common land and hill east of Dyserth)
 - 55. Footpath above Clogwyn Mawr
 - 56. Pen-y-corddyn-mawr
 - 57. Moelfre Isaf
 - 58. Little Orme at Trig Point
 - 65. A55 at jerry north of Penmaen Rhos

Please see figure 7b for LCA Legend

Data Source:
Contains OS data © Crown copyright and database right (2021). © Crown copyright.
All rights reserved. (2021) Ordnance Survey Licence 0100031873. Contains public sector information licensed under the terms of the Open Government Licence v3.0.

PROJECT TITLE:
AWEL Y MÔR OFFSHORE WINDFARM

FIGURE TITLE:
Blade Tip ZTV with Landscape Character and Viewpoint Locations - Eastern area

VER	DATE	REMARKS	Drawn	Checked
1	08/03/2022	For Issue	JM	LT

FIGURE NUMBER:
Figure 16c

SCALE: 1:90,000
PROJECT: A1
DATA: WGS84
PROJECTION: UTM30N

AWEL Y MÔR
Offshore Wind Farm



RWE Renewables UK
Swindon Limited

Windmill Hill Business Park
Whitehill Way
Swindon
Wiltshire SN5 6PB
T +44 (0)8456 720 090
www.rwe.com

Registered office:
RWE Renewables UK
Swindon Limited
Windmill Hill Business Park
Whitehill Way
Swindon