



Awel y Môr Offshore Wind Farm

Category 6: Environmental Statement

**Volume 6, Annex 10.5: SLVIA
Visualisations - Figure 85
(ViewPoint 62 - Great Orme -
Marine Drive)**

Date: April 2022

Revision: A

Application Reference: 6.6.10.5.58

Pursuant to: APFP Regulation 5(2)(a)



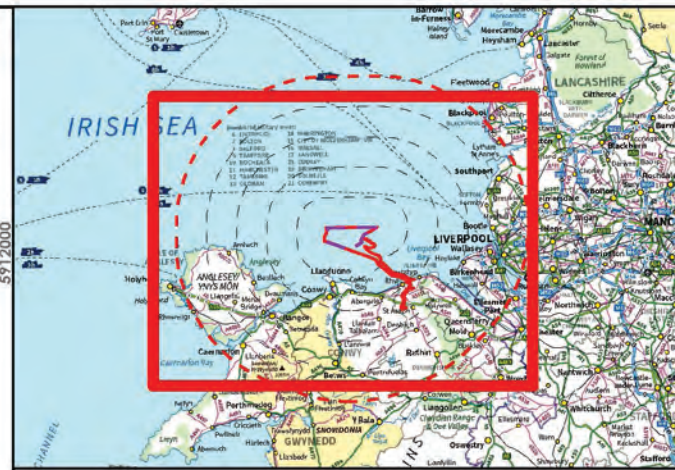
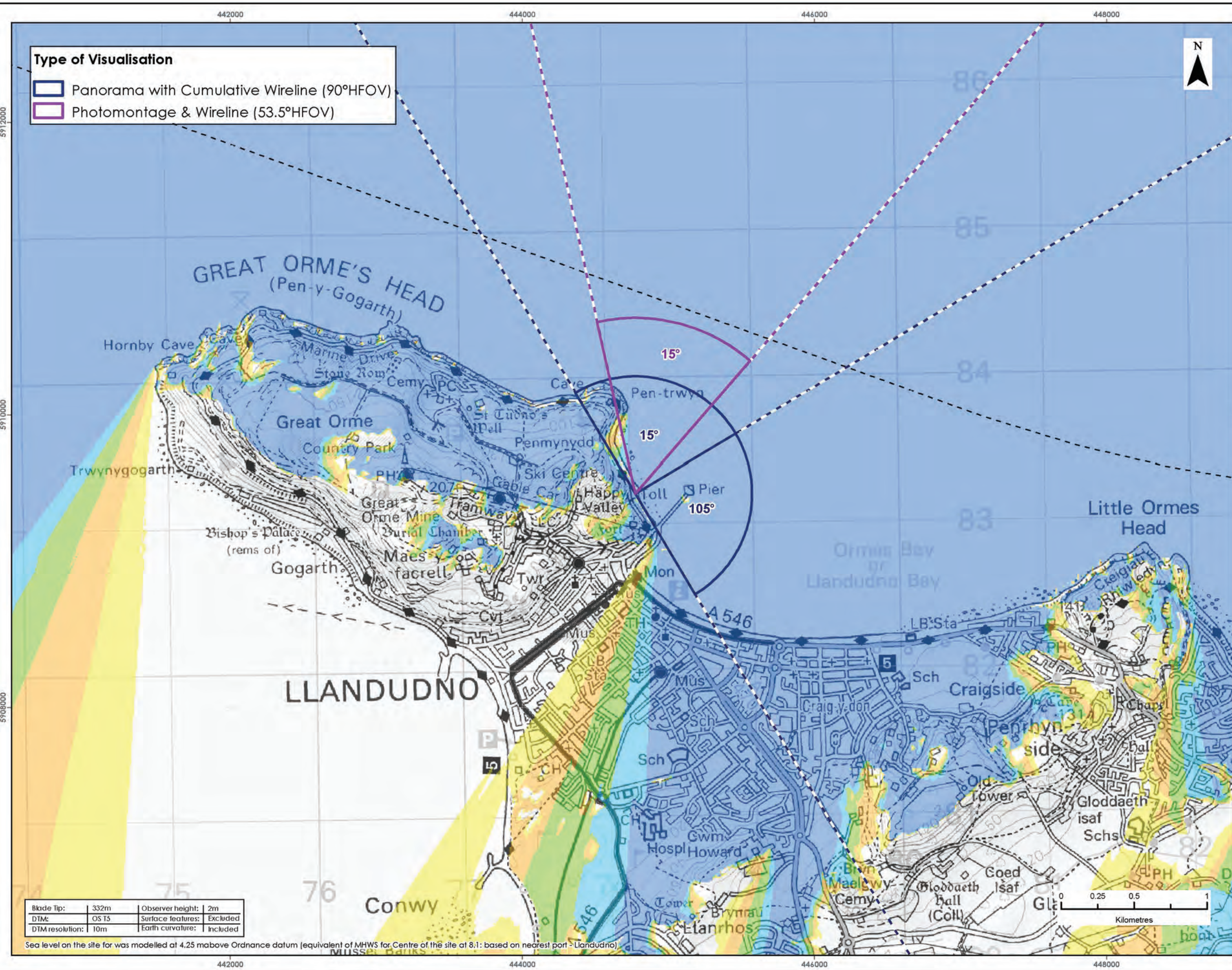
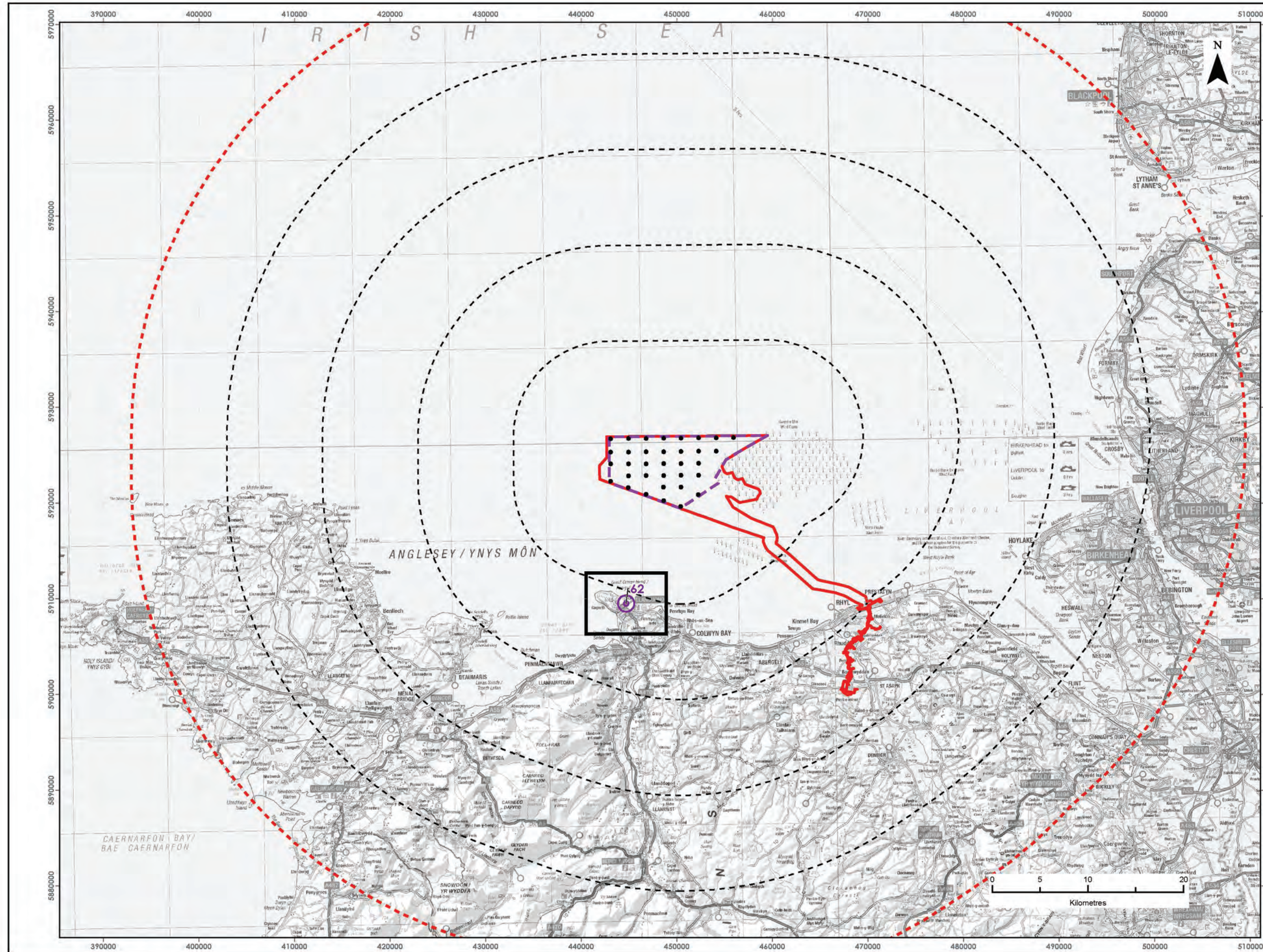
REVISION	DATE	STATUS/ REASON FOR ISSUE	AUTHOR:	CHECKED BY:	APPROVED BY:
A	April 2022	ES	OPEN	SLR/GoBe	RWE

www.awelymor.cymru

RWE Renewables UK
Swindon Limited

Windmill Hill Business Park
Whitehill Way
Swindon
Wiltshire SN5 6PB
T +44 (0)8456 720 090
www.rwe.com

Registered office:
RWE Renewables UK
Swindon Limited
Windmill Hill Business Park
Whitehill Way
Swindon



LEGEND

- Order Limits
- Array Area
- 10km Radii
- 50km Study Area
- Wind Turbine Generators (indicative locations)
- Viewpoint Location
- Zone of Theoretical Visibility (Blade Tip)
- No. of Turbines Theoretically Visible

1 - 7
8 - 14
15 - 21
22 - 28
29 - 34

Data Source:
Contains OS data © Crown copyright and database right (2021).
© Crown copyright. All rights reserved. (2021). Ordnance Survey Licence 0100031673.

PROJECT TITLE:
AWEL Y MÔR OFFSHORE WINDFARM

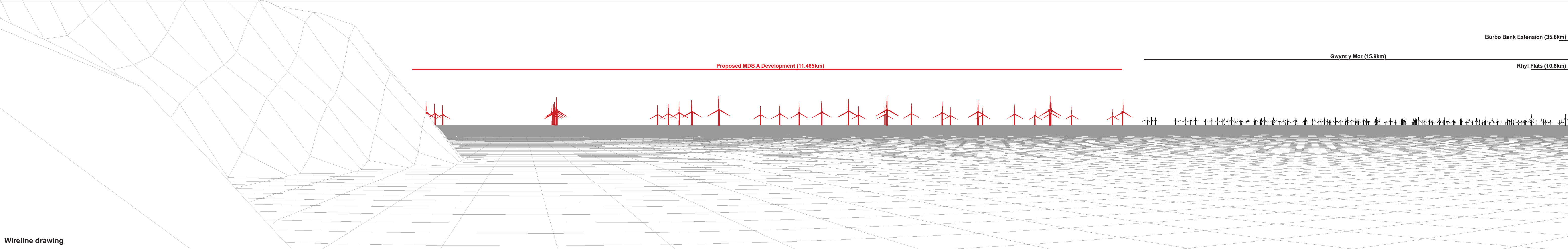
FIGURE TITLE:
Viewpoint 62 - Great Orme - Marine Drive, Wales Coast Path near Toll Booth

VER	DATE	REMARKS	Drawn	Checked
1	03/03/2022	For Issue	JM	LT

FIGURE NUMBER:
Figure 85a

SCALE: 1:25,000
PLOT SIZE: A3
DATUM: WGS84
PROJECTION: UTM30N

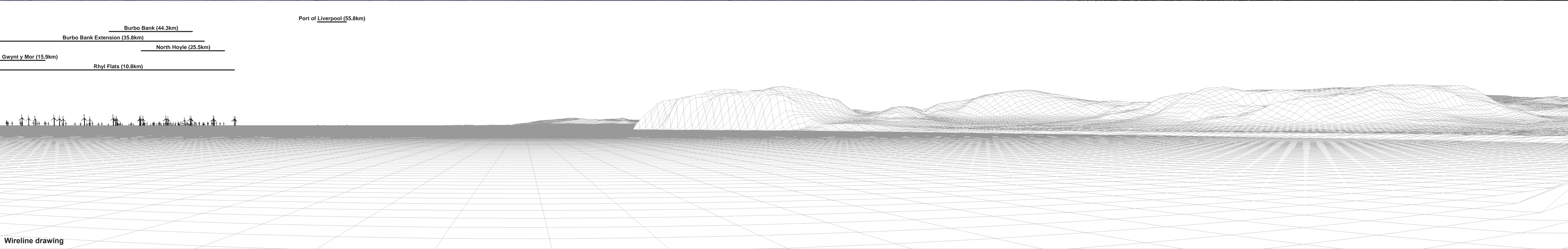
From Wylfa Newydd
AWEL Y MÔR
Offshore Wind Farm

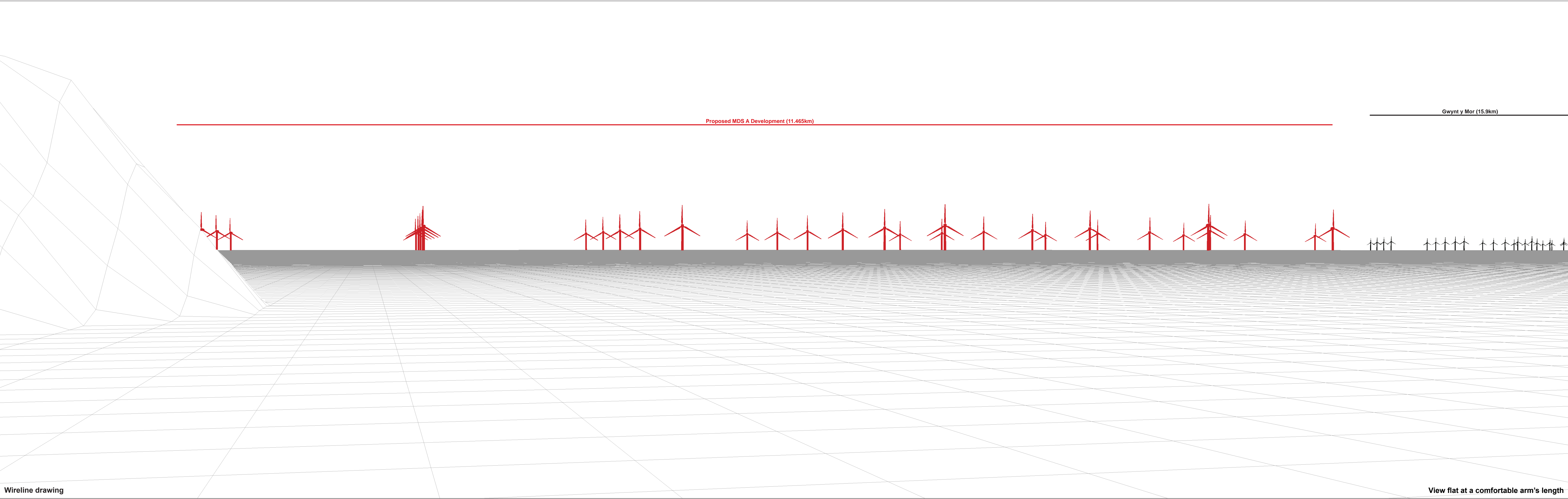




Baseline photograph

This image provides landscape and visual context only







Photomontage: Proposed MDS A Development (operational turbines have been montaged in this view)

View flat at a comfortable arm's length



RWE Renewables UK
Swindon Limited

Windmill Hill Business Park
Whitehill Way
Swindon
Wiltshire SN5 6PB
T +44 (0)8456 720 090
www.rwe.com

Registered office:
RWE Renewables UK
Swindon Limited
Windmill Hill Business Park
Whitehill Way
Swindon