



# Awel y Môr Offshore Wind Farm

## Category 6: Environmental Statement

**Volume 6, Annex 10.5: SLVIA  
Visualisations - Figure 78  
(ViewPoint 55 - Footpath Above  
Cilgwyn Mawr)**

**Date: April 2022**

**Revision: A**

Application Reference: 6.6.10.5.51

Pursuant to: APFP Regulation 5(2)(a)



REVISION	DATE	STATUS/ REASON FOR ISSUE	AUTHOR:	CHECKED BY:	APPROVED BY:
A	April 2022	ES	OPEN	SLR/GoBe	RWE

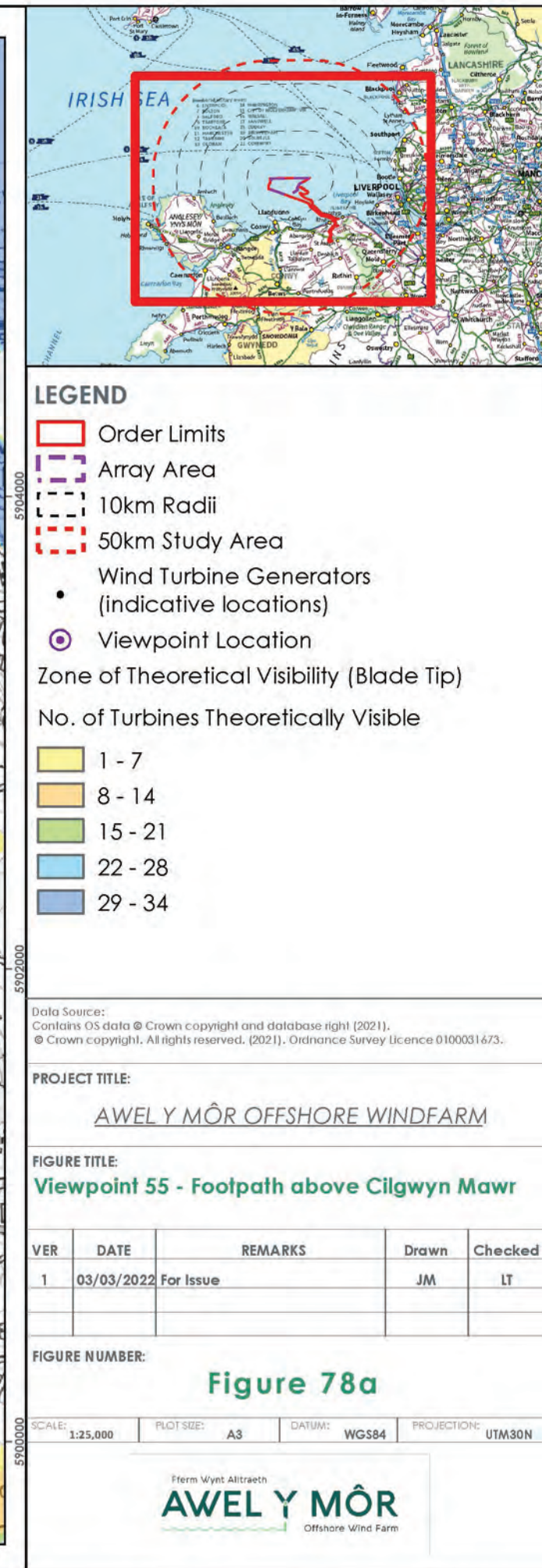
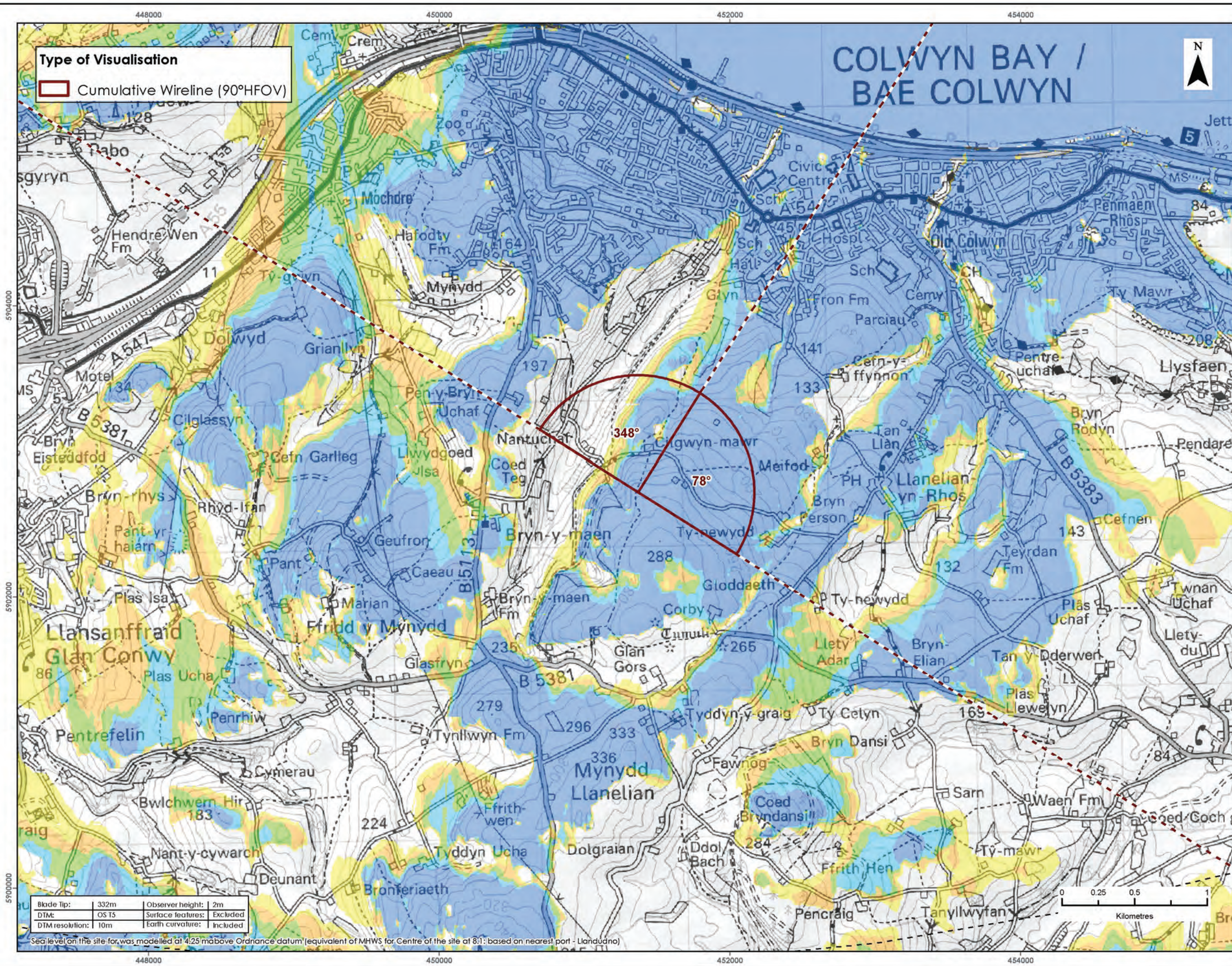
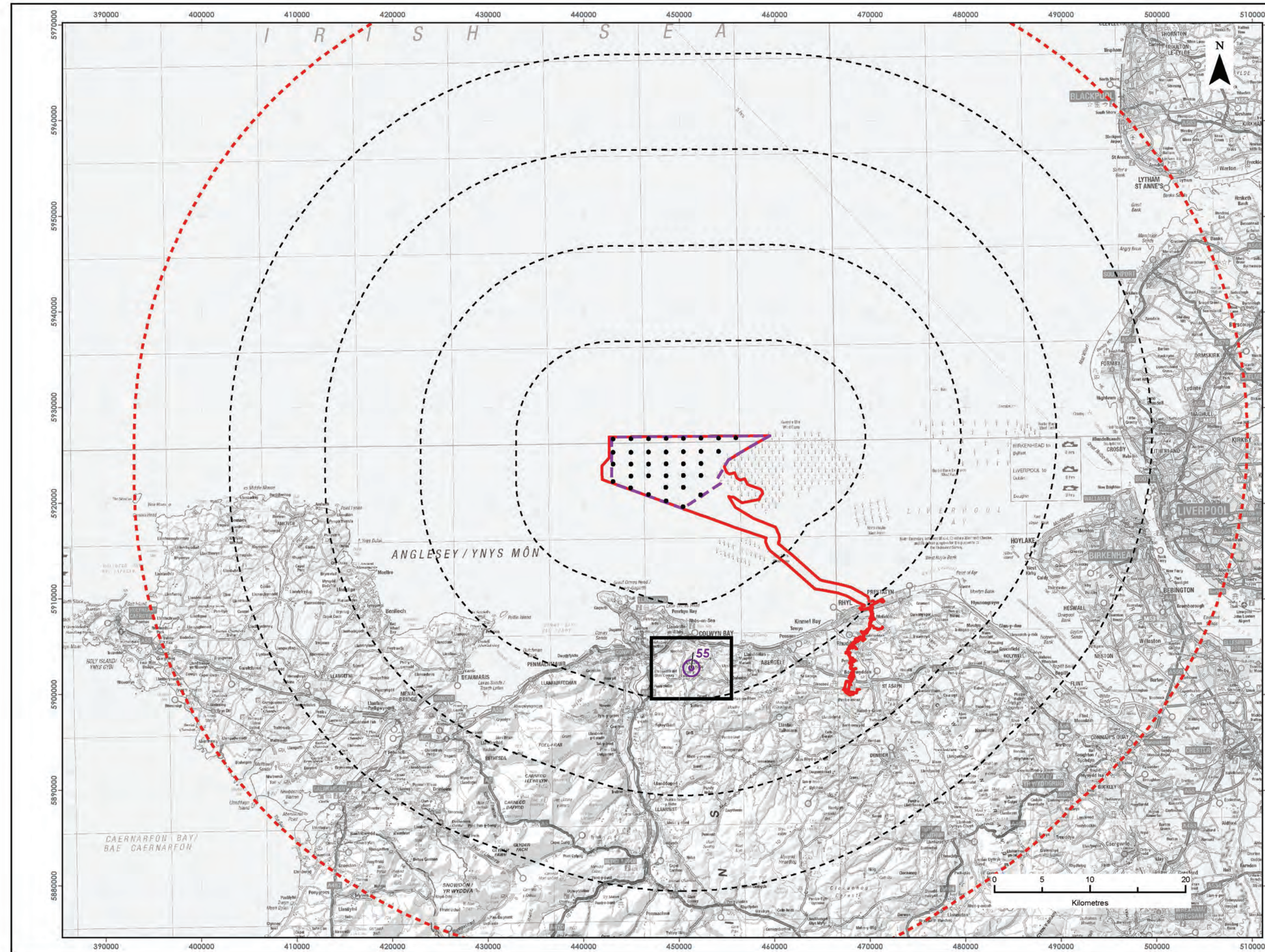
[www.awelymor.cymru](http://www.awelymor.cymru)

RWE Renewables UK  
Swindon Limited

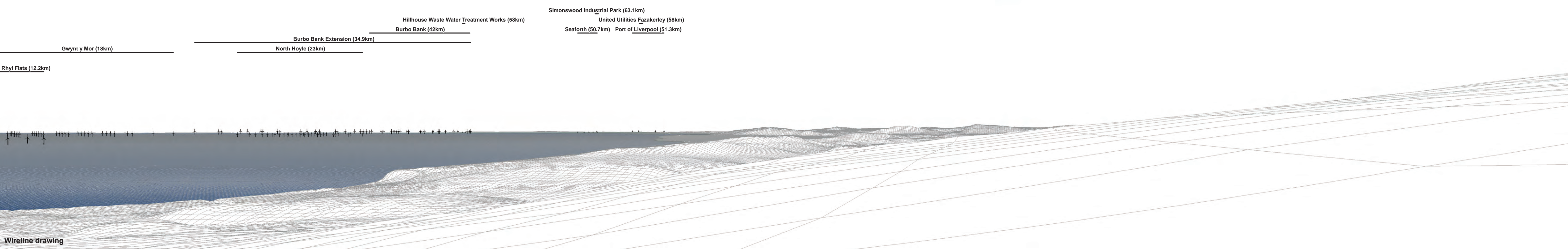
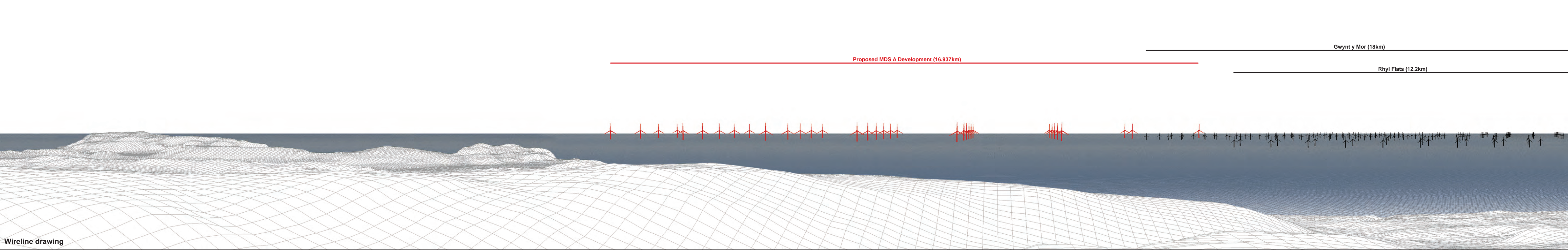
Windmill Hill Business Park  
Whitehill Way  
Swindon  
Wiltshire SN5 6PB  
T +44 (0)8456 720 090  
[www.rwe.com](http://www.rwe.com)

Registered office:  
RWE Renewables UK  
Swindon Limited  
Windmill Hill Business Park  
Whitehill Way  
Swindon













RWE Renewables UK  
Swindon Limited

Windmill Hill Business Park  
Whitehill Way  
Swindon  
Wiltshire SN5 6PB  
T +44 (0)8456 720 090  
[www.rwe.com](http://www.rwe.com)

Registered office:  
RWE Renewables UK  
Swindon Limited  
Windmill Hill Business Park  
Whitehill Way  
Swindon