



# Awel y Môr Offshore Wind Farm

## Category 6: Environmental Statement

### Volume 6, Annex 10.5: SLVIA Visualisations - Figure 32 (ViewPoint 5 - Red Wharf Bay)

**Date: April 2022**

**Revision: A**

Application Reference: 6.6.10.5.5

Pursuant to: APFP Regulation 5(2)(a)



REVISION	DATE	STATUS/ REASON FOR ISSUE	AUTHOR:	CHECKED BY:	APPROVED BY:
A	April 2022	ES	OPEN	SLR/GoBe	RWE

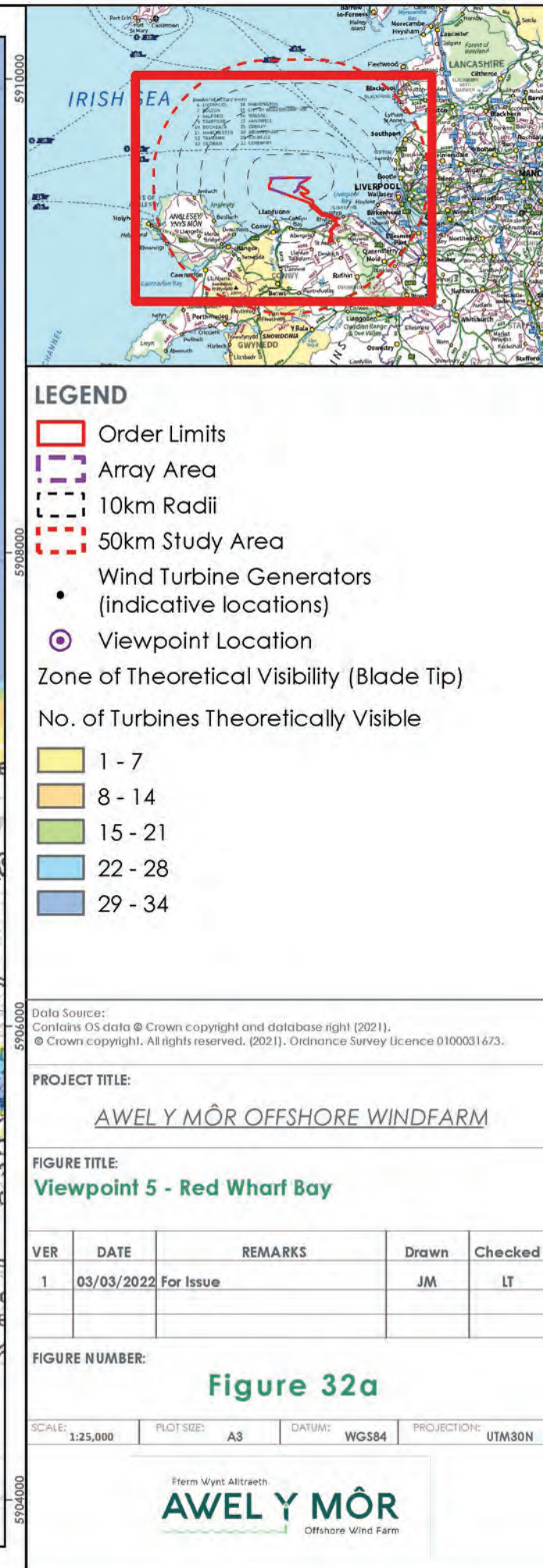
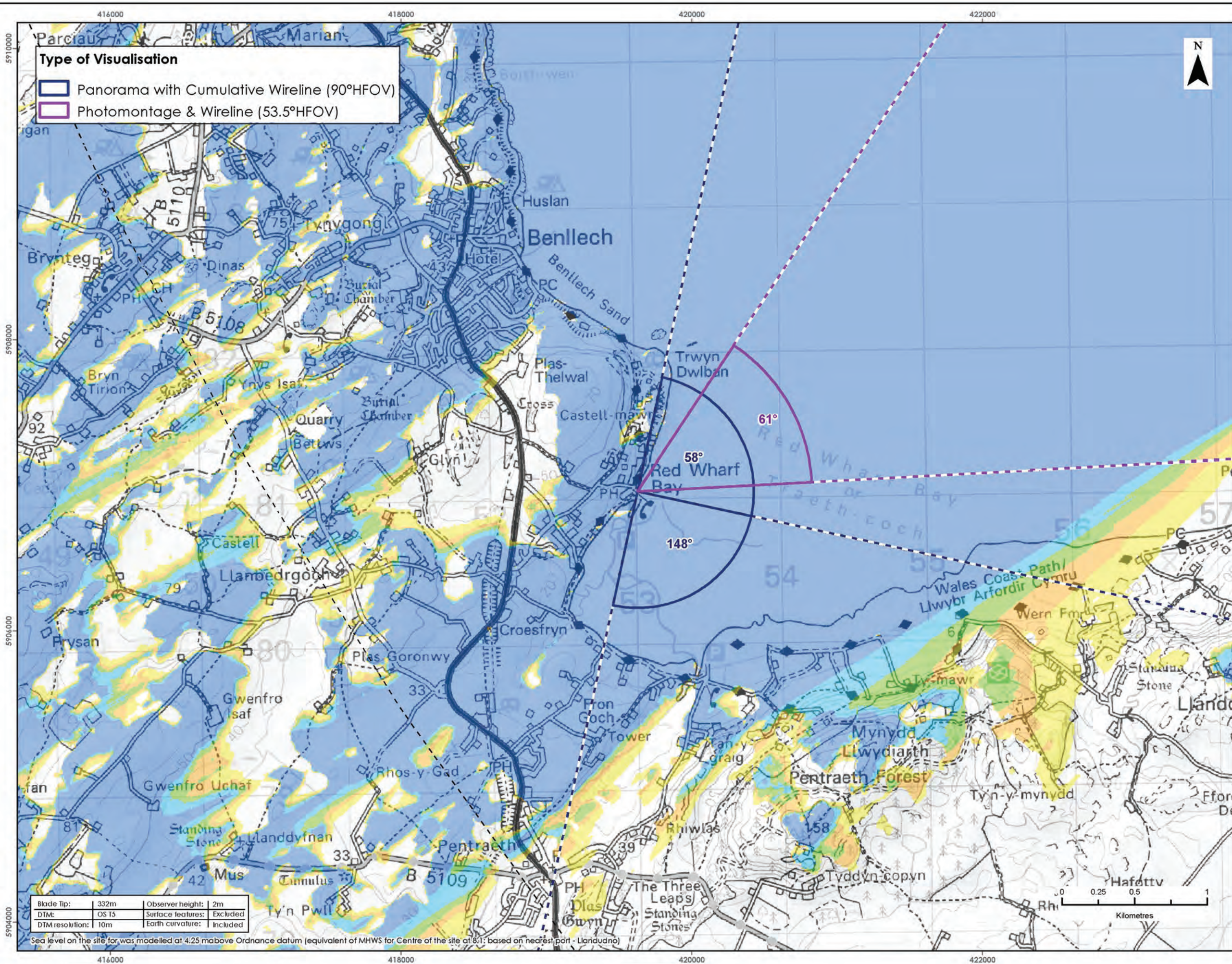
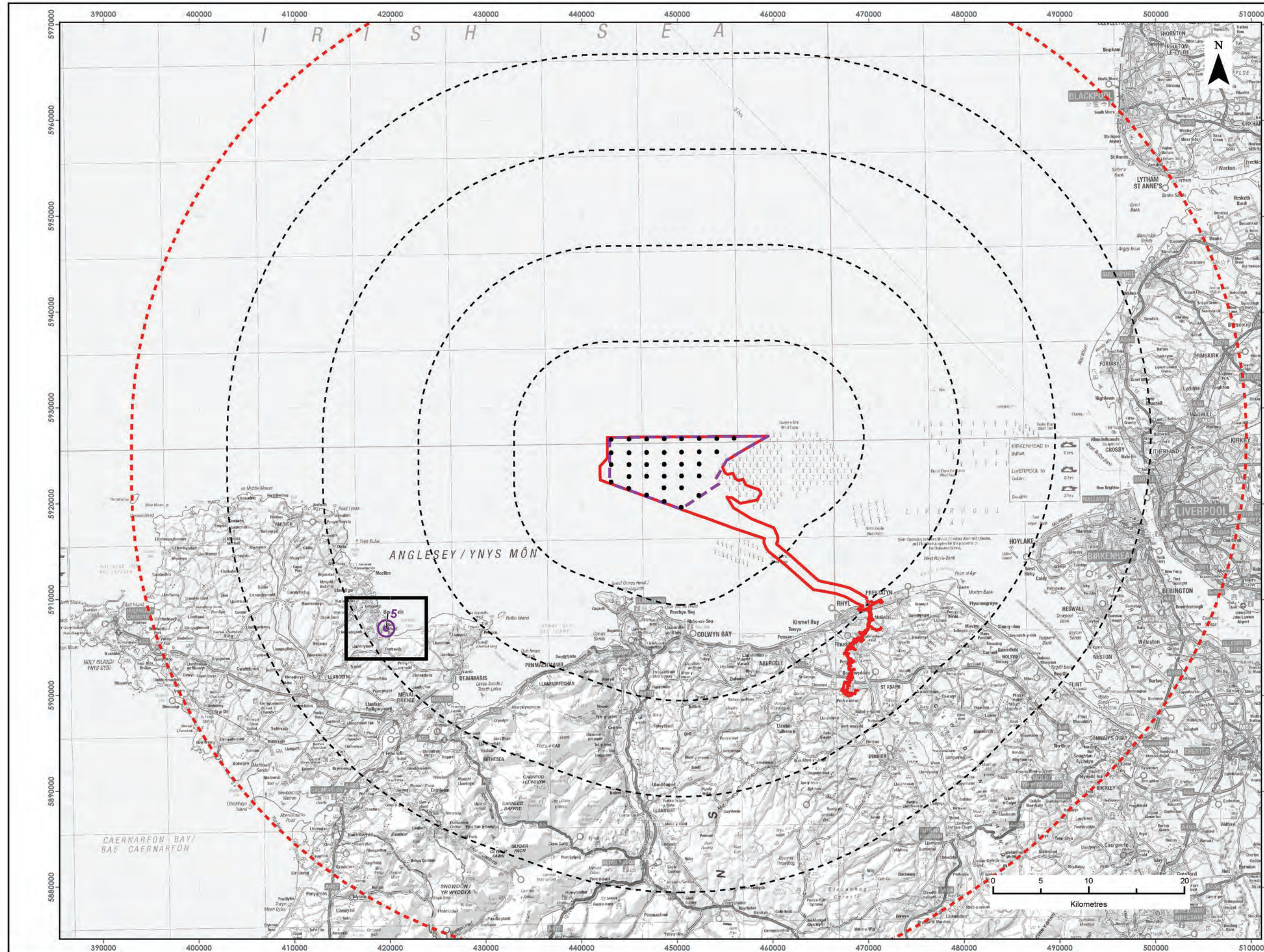
[www.awelymor.cymru](http://www.awelymor.cymru)

RWE Renewables UK  
Swindon Limited

Windmill Hill Business Park  
Whitehill Way  
Swindon  
Wiltshire SN5 6PB  
T +44 (0)8456 720 090  
[www.rwe.com](http://www.rwe.com)

Registered office:  
RWE Renewables UK  
Swindon Limited  
Windmill Hill Business Park  
Whitehill Way  
Swindon



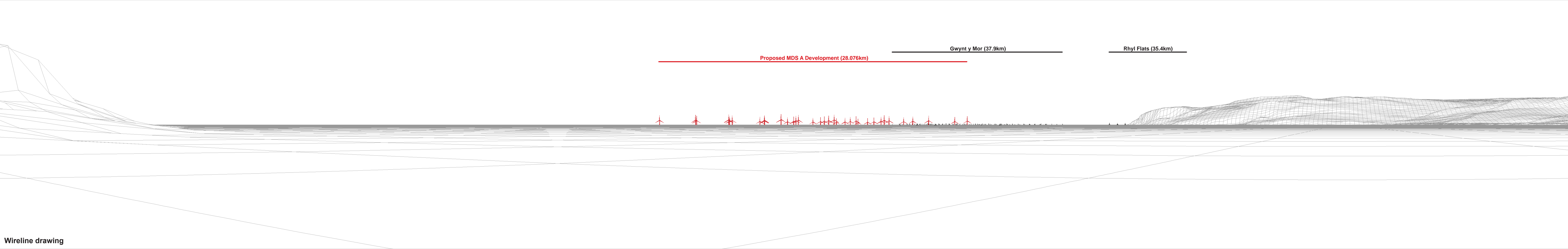






Baseline photograph

This image provides landscape and visual context only



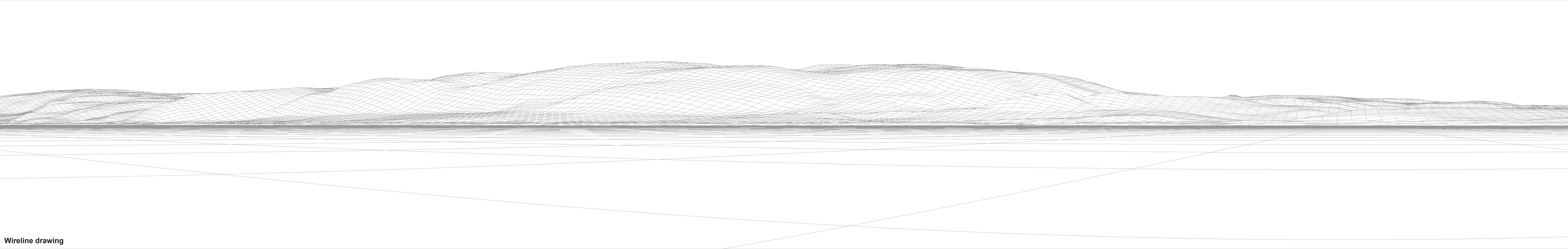
Wireline drawing





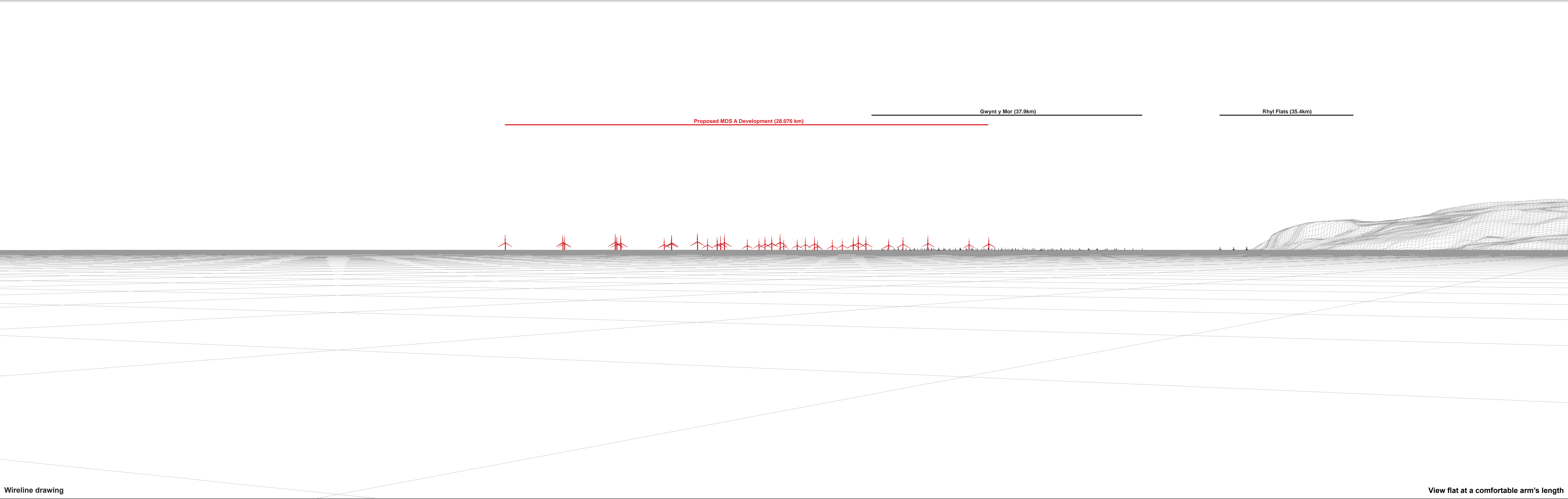
Baseline photograph

This image provides landscape and visual context only



Wireline drawing





Wireline drawing

View flat at a comfortable arm's length





Photomontage: Proposed MDS A Development (operational turbines have been montaged in this view)

View flat at a comfortable arm's length

OS reference:	253013 E 381053 N	Horizontal field of view:	53.5° (planar projection)	Camera:	Canon EOS 6D	Figure: 32e
Eye level:	1.5 mAOD	Principal distance:	812.5 mm	Lens:	Canon EF 50mm f/1.4	Viewpoint 5: Red Wharf Bay
Direction of view:	61°	Paper size:	841 x 297 mm (half A1)	Camera height:	1.5 m	Awel y Môr Offshore Wind Farm
Nearest turbine:	28.076 km	Correct printed image size:	820 x 260 mm	Date and time:	24.04.2021 17:02	© Crown copyright. All rights reserved (2021). Licence number 0100031673





RWE Renewables UK  
Swindon Limited

Windmill Hill Business Park  
Whitehill Way  
Swindon  
Wiltshire SN5 6PB  
T +44 (0)8456 720 090  
[www.rwe.com](http://www.rwe.com)

Registered office:  
RWE Renewables UK  
Swindon Limited  
Windmill Hill Business Park  
Whitehill Way  
Swindon