



# Awel y Môr Offshore Wind Farm

## Category 6: Environmental Statement

**Volume 6, Annex 10.5: SLVIA  
Visualisations - Figure 82  
(ViewPoint 59 - Llandundo  
Promenade - Lifeboat Slipway)**

**Date: April 2022**

**Revision: A**

Application Reference: 6.6.10.5.55

Pursuant to: APFP Regulation 5(2)(a)



REVISION	DATE	STATUS/ REASON FOR ISSUE	AUTHOR:	CHECKED BY:	APPROVED BY:
A	April 2022	ES	OPEN	SLR/GoBe	RWE

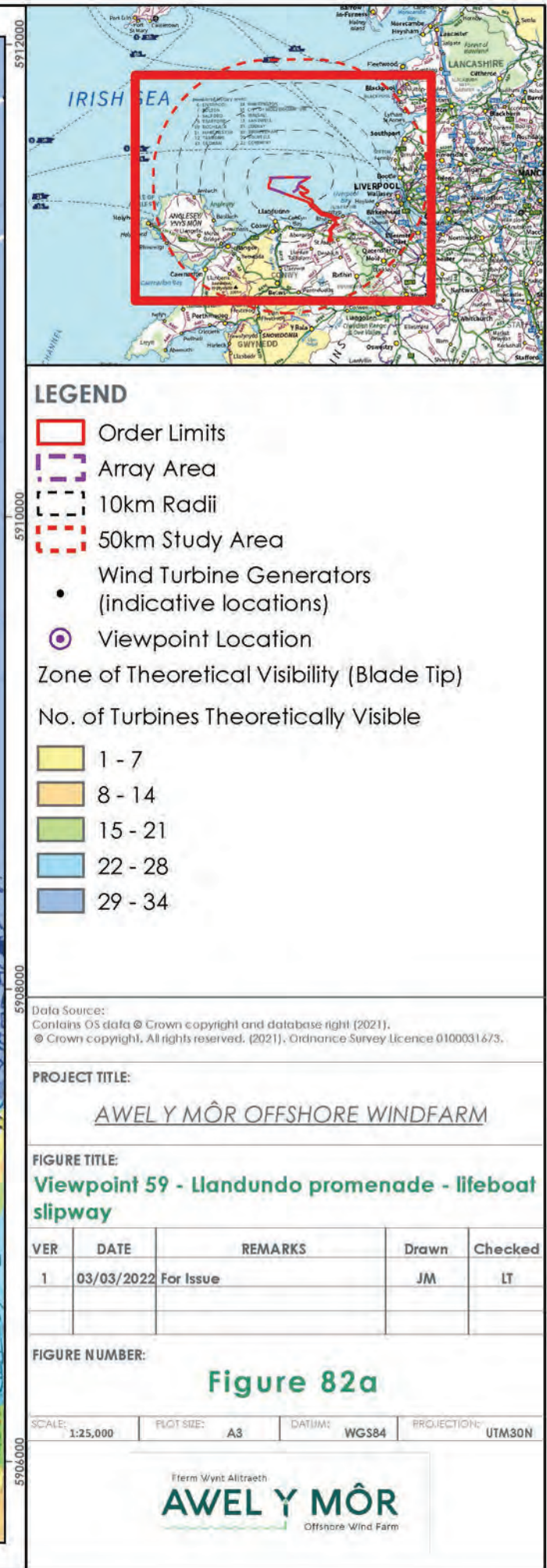
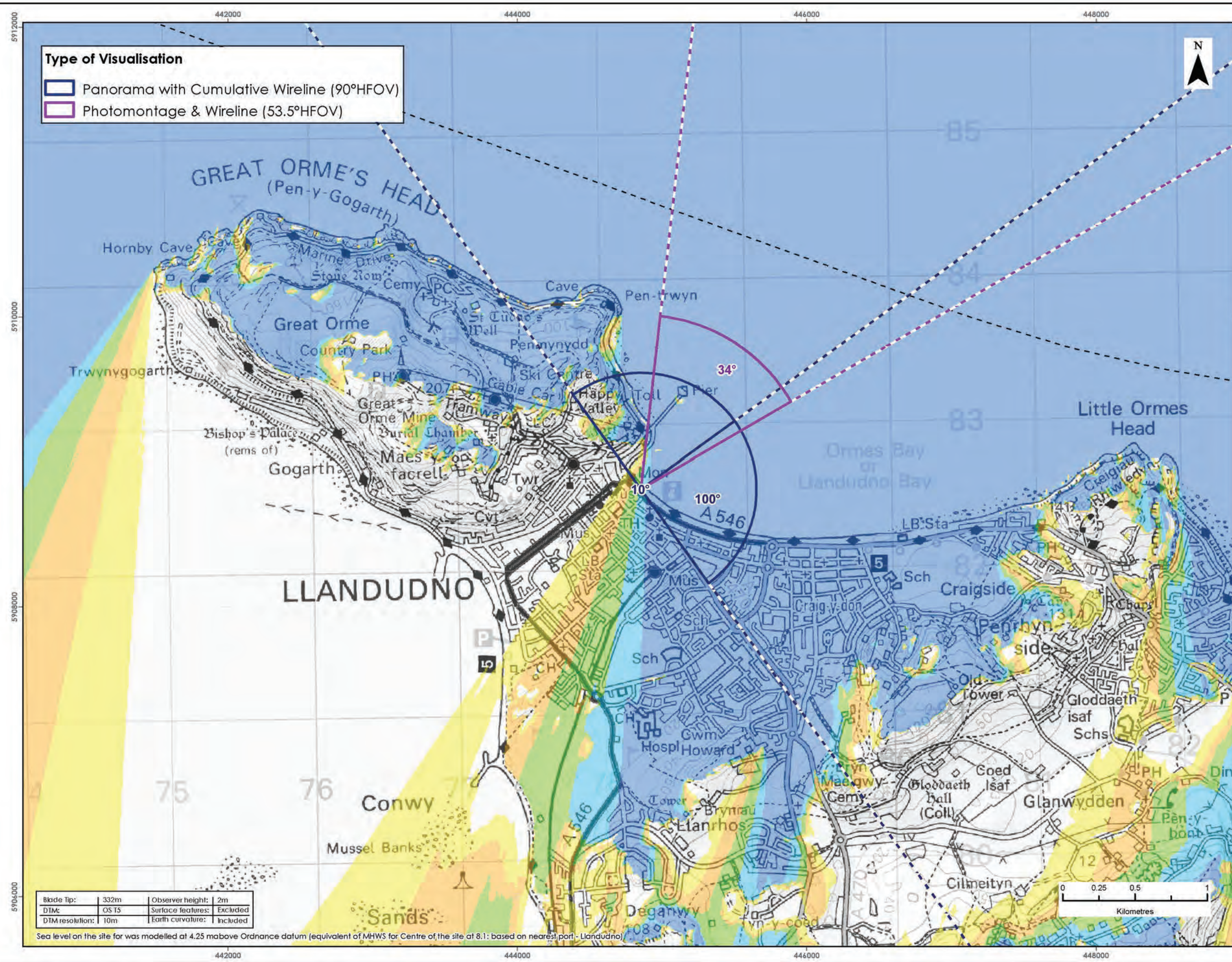
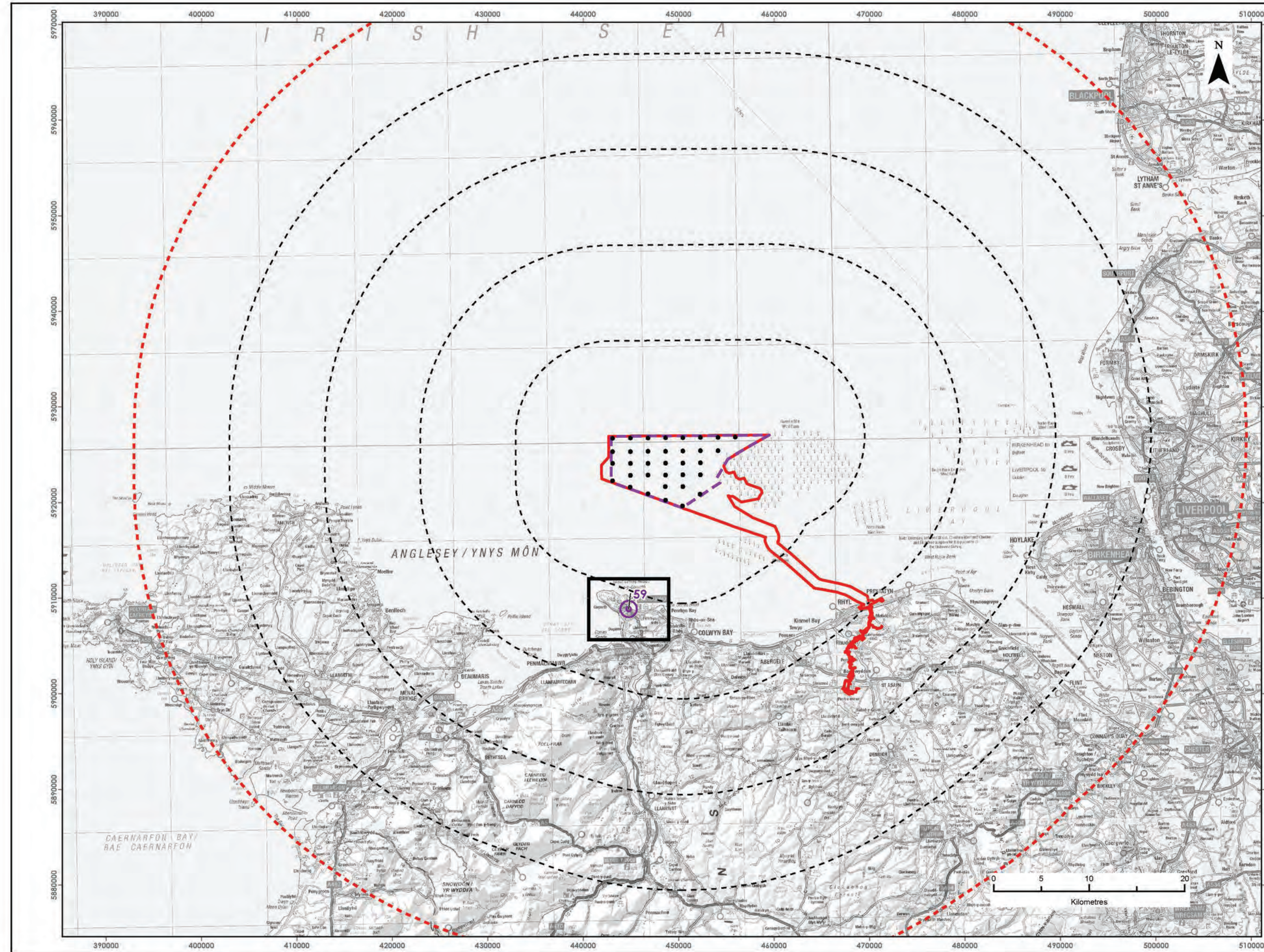
[www.awelymor.cymru](http://www.awelymor.cymru)

RWE Renewables UK  
Swindon Limited

Windmill Hill Business Park  
Whitehill Way  
Swindon  
Wiltshire SN5 6PB  
T +44 (0)8456 720 090  
[www.rwe.com](http://www.rwe.com)

Registered office:  
RWE Renewables UK  
Swindon Limited  
Windmill Hill Business Park  
Whitehill Way  
Swindon



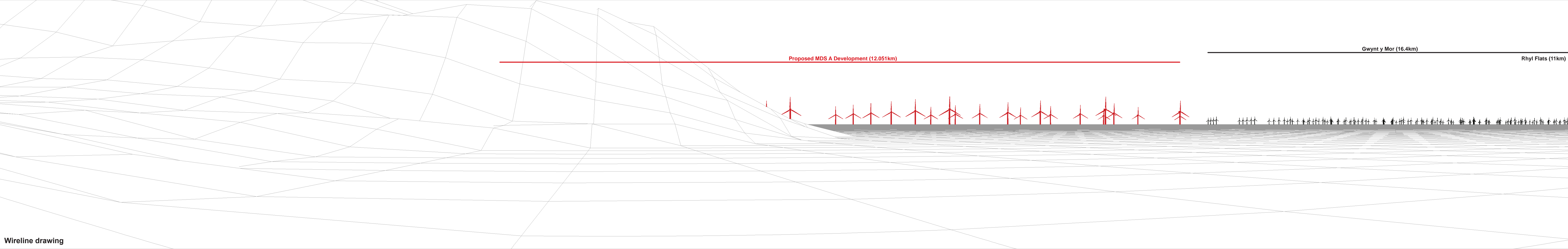






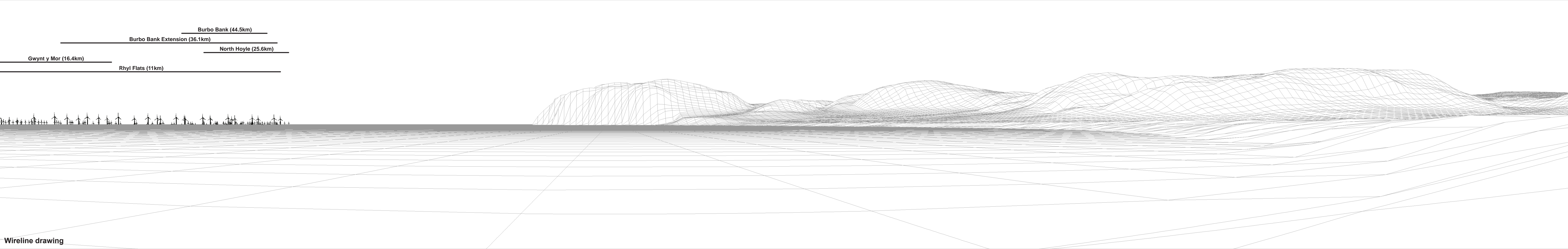
Baseline photograph

This image provides landscape and visual context only

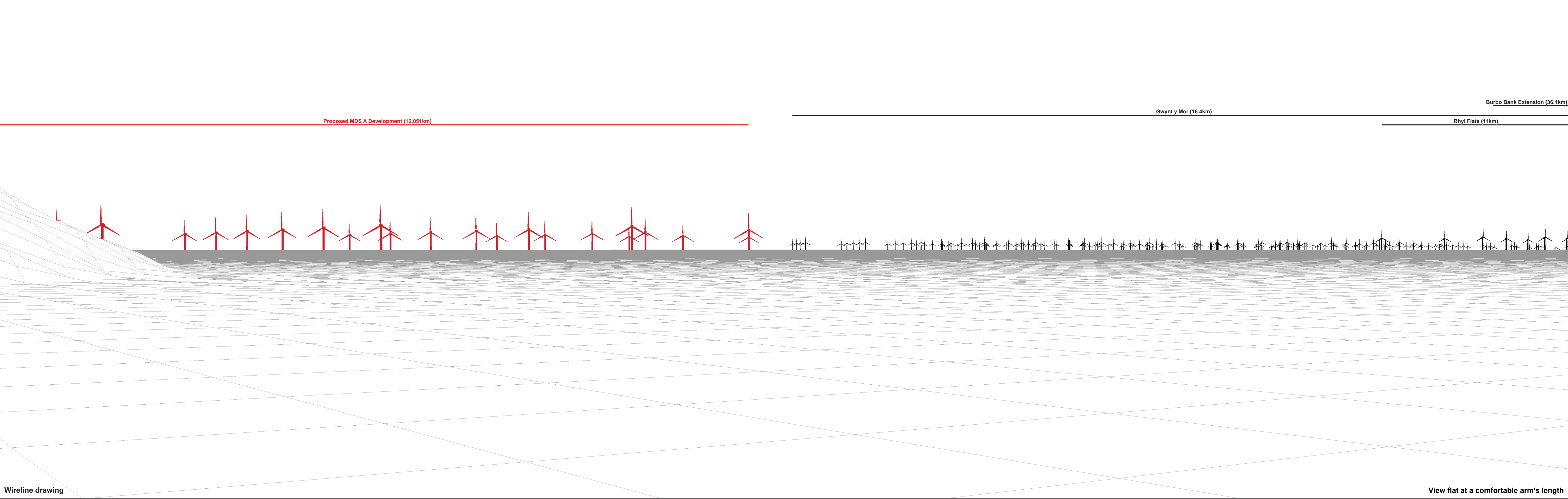


Wireline drawing













Photomontage: Proposed MDS A Development

View flat at a comfortable arm's length

OS reference:	278264 E 382555 N	Horizontal field of view:	53.5° (planar projection)	Camera:	Canon EOS 5D MK11	Figure: 82e
Eye level:	5.2 mAOD	Principal distance:	812.5 mm	Lens:	Canon EF 50mm f/1.4	Viewpoint 59: Llandundo promenade - lifeboat slipway
Direction of view:	34°	Paper size:	841 x 297 mm (half A1)	Camera height:	1.5 m	Awel y Môr Offshore Wind Farm
Nearest turbine:	12.051 km	Correct printed image size:	820 x 260 mm	Date and time:	16.04.2021 18:06	© Crown copyright. All rights reserved (2021). Licence number 0100031673





RWE Renewables UK  
Swindon Limited

Windmill Hill Business Park  
Whitehill Way  
Swindon  
Wiltshire SN5 6PB  
T +44 (0)8456 720 090  
[www.rwe.com](http://www.rwe.com)

Registered office:  
RWE Renewables UK  
Swindon Limited  
Windmill Hill Business Park  
Whitehill Way  
Swindon