



Awel y Môr Offshore Wind Farm

Category 6: Environmental Statement

**Volume 6, Annex 10.5: SLVIA
Visualisations - Figure 77
(ViewPoint 54 - y Foel (Common
land and hill east of Dyserth))**

Date: April 2022

Revision: A

Application Reference: 6.6.10.5.50

Pursuant to: APFP Regulation 5(2)(a)



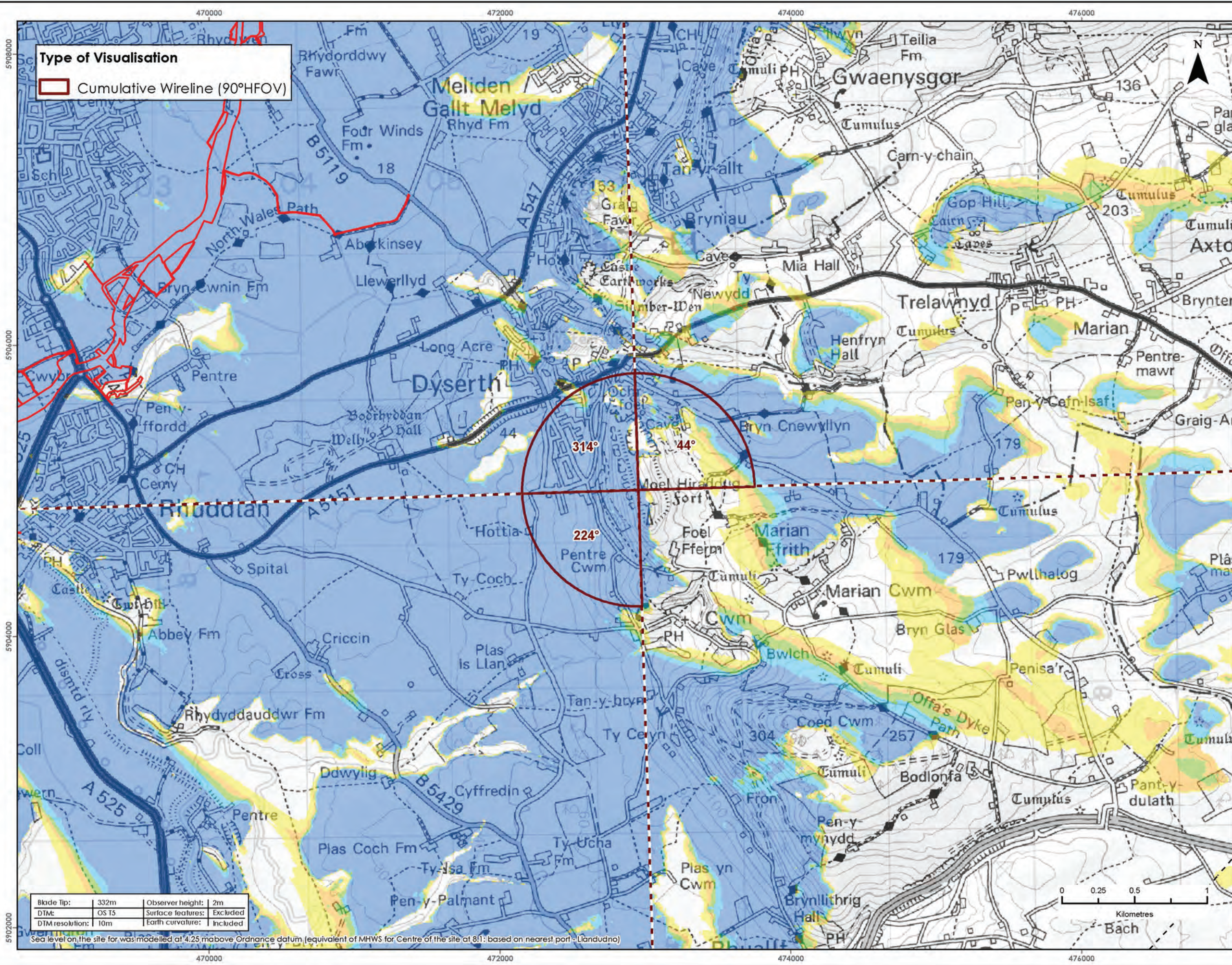
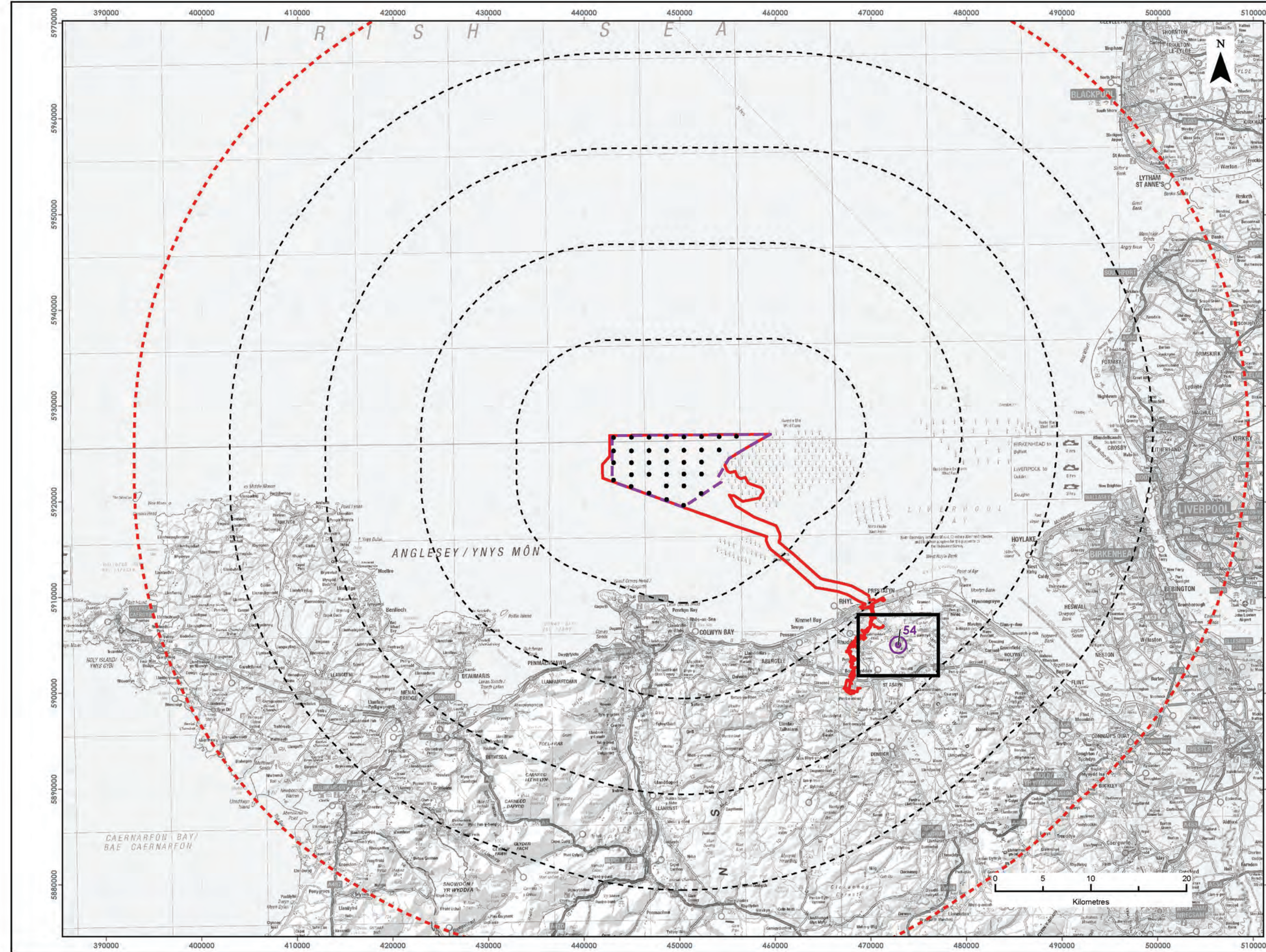
REVISION	DATE	STATUS/ REASON FOR ISSUE	AUTHOR:	CHECKED BY:	APPROVED BY:
A	April 2022	ES	OPEN	SLR/GoBe	RWE

www.awelymor.cymru

RWE Renewables UK
Swindon Limited

Windmill Hill Business Park
Whitehill Way
Swindon
Wiltshire SN5 6PB
T +44 (0)8456 720 090
www.rwe.com

Registered office:
RWE Renewables UK
Swindon Limited
Windmill Hill Business Park
Whitehill Way
Swindon



LEGEND

- Order Limits
- Array Area
- 10km Radii
- 50km Study Area
- Wind Turbine Generators (indicative locations)
- Viewpoint Location
- Zone of Theoretical Visibility (Blade Tip)
- No. of Turbines Theoretically Visible

No. of Turbines Theoretically Visible
1 - 7
8 - 14
15 - 21
22 - 28
29 - 34

Data Sources:
Contains OS data © Crown copyright and database right (2021).
© Crown copyright. All rights reserved. (2021). Ordnance Survey Licence 0100031673.

PROJECT TITLE:
AWEL Y MÔR OFFSHORE WINDFARM

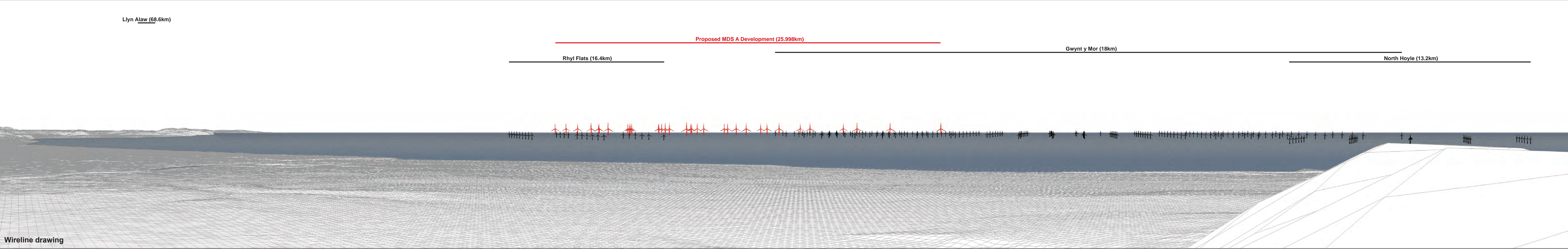
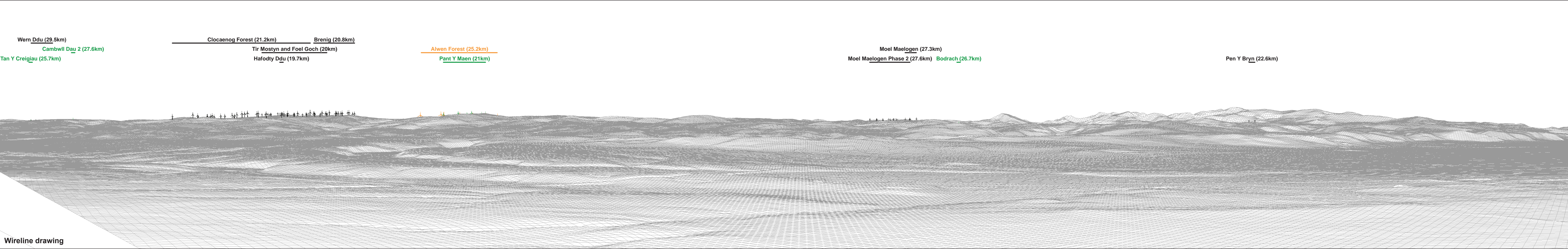
FIGURE TITLE:
Viewpoint 54 - y Foel (Common land and hill east of Dyserth)

VER	DATE	REMARKS	Drawn	Checked
1	03/03/2022	For Issue	JM	LT

FIGURE NUMBER:
Figure 77a

SCALE: 1:25,000 | PLOT SIZE: A3 | DATUM: WGS84 | PROJECTION: UTM30N

From Wylt Allt
AWEL Y MÔR
Offshore Wind Farm







RWE Renewables UK
Swindon Limited

Windmill Hill Business Park
Whitehill Way
Swindon
Wiltshire SN5 6PB
T +44 (0)8456 720 090
www.rwe.com

Registered office:
RWE Renewables UK
Swindon Limited
Windmill Hill Business Park
Whitehill Way
Swindon