



Awel y Môr Offshore Wind Farm

Category 6: Environmental Statement

Volume 6, Annex 10.4: SLVIA Figures - Figure 17.1c (Blade Tip ZTV (MDS A) with Visual Receptors and Viewpoint Locations)

Date: April 2022

Revision: A

Application Reference: 6.6.10.4.27

Pursuant to: APFP Regulation 5(2)(a)



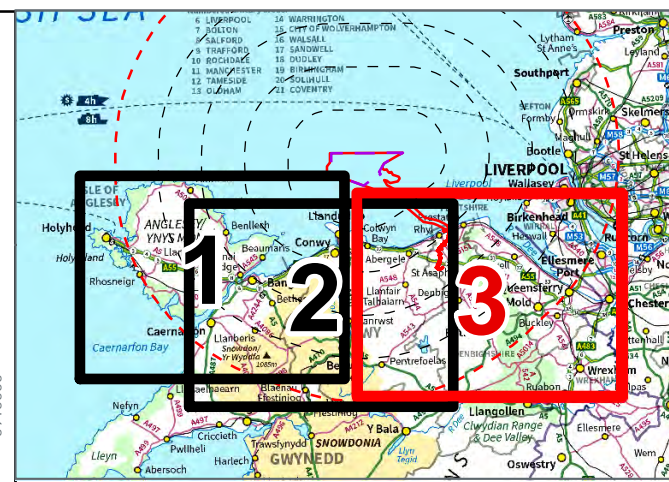
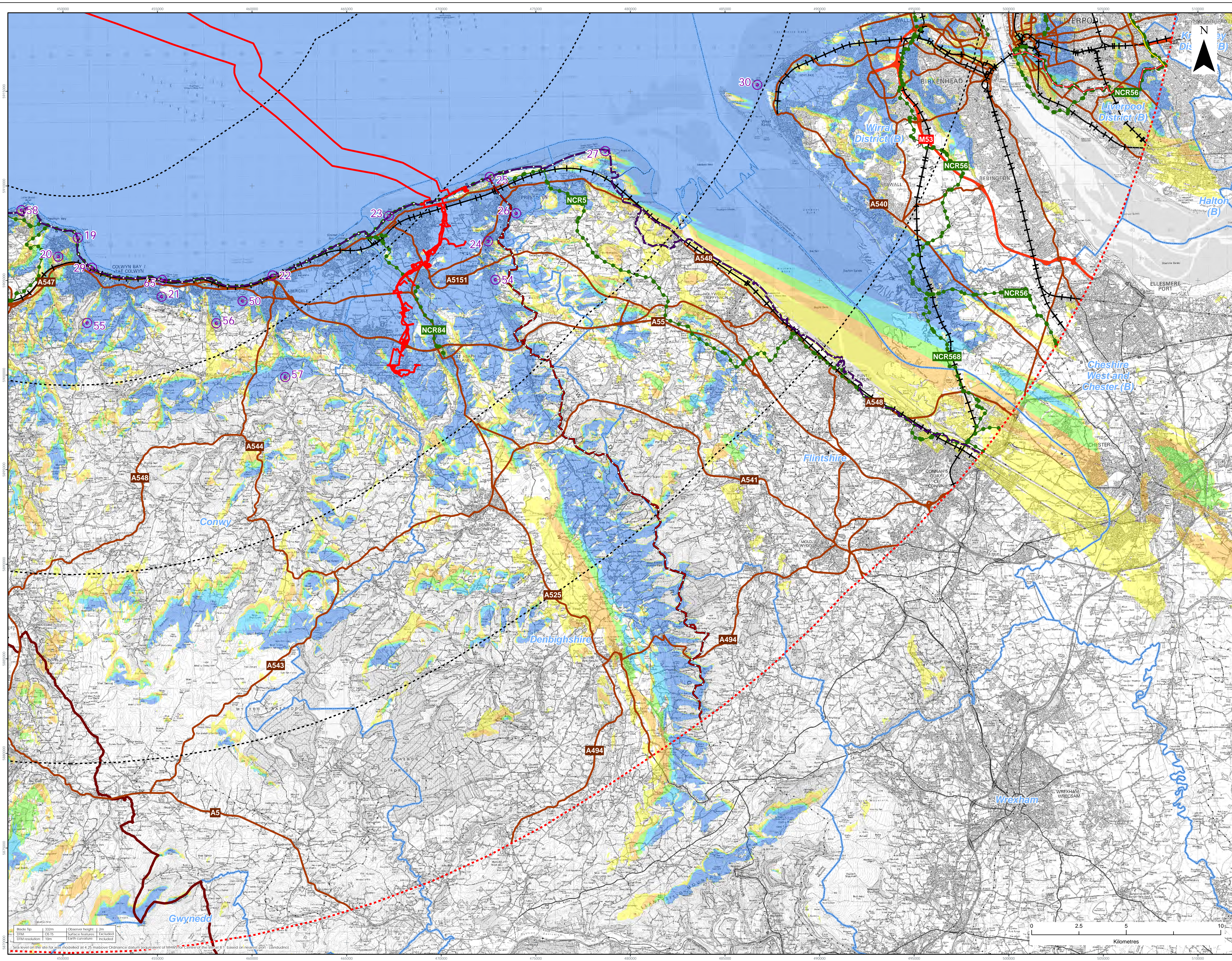
REVISION	DATE	STATUS/ REASON FOR ISSUE	AUTHOR:	CHECKED BY:	APPROVED BY:
A	April 2022	ES	OPEN	SLR/GoBe	RWE

www.awelymor.cymru

RWE Renewables UK
Swindon Limited

Windmill Hill Business Park
Whitehill Way
Swindon
Wiltshire SN5 6PB
T +44 (0)8456 720 090
www.rwe.com

Registered office:
RWE Renewables UK
Swindon Limited
Windmill Hill Business Park
Whitehill Way
Swindon



LEGEND

- Order Limits
- Array Area
- 10km Radii
- 50km Study Area
- Viewpoint Location
- Snowdonia National Park
- District Boundary
- E8
- Offa's Dyke Path
- Trans Pennine Trail
- Wales Coast Path
- National Cycle Network
- Railway
- Motorway
- Primary and A Road

Zone of Theoretical Visibility (Blade Tip)

No. of Turbines Theoretically Visible

- 1 - 7
- 8 - 14
- 15 - 21
- 22 - 28
- 29 - 34

Viewpoints

- 19. Rhos-on-Sea
- 20. Bryn Cwyn
- 21. Mynydd Marian
- 22. Abergele promenade
- 23. Rhyll Aquarium
- 24. Craig Fawr
- 25. Prestatyn Nova Centre
- 26. Bryn Iwryn Viewpoint (Prestatyn Hillside viewpoint, Gwaenygior)
- 27. Point of Ayr
- 29. Colwyn Bay promenade
- 30. Hilbre Point
- 50. Gwyech Castle - Terrace
- 54. y Fford (Common land and hill east of Dyserth)
- 55. Footpath above Clogwyn Mawr
- 56. Pen-y-corddyn-mawr
- 57. Moelre saf
- 58. Little Orme at Trig Point
- 65. A55 at jetty north of Penmaen rhos

Data Source:
Contains OS data © Crown copyright and database right (2021). © Crown copyright.
All rights reserved. (2021) Ordnance Survey Licence 0100031873. Contains public sector information licensed under the terms of the Open Government Licence v3.0.

PROJECT TITLE:
AWEL Y MŌR OFFSHORE WINDFARM

FIGURE TITLE:
Blade Tip ZTV with Visual Receptors and Viewpoint Locations - Eastern area

VER	DATE	REMARKS	Drawn	Checked
1	08/03/2022	For Issue	JM	LT

FIGURE NUMBER:
Figure 17.1c

Scale: 1:50,000

PROJECT	DATE	PROJECTION
A1	WGS84	UTM30N

Drawn by: J.M.

AWEL Y MŌR
Offshore Wind Farm



RWE Renewables UK
Swindon Limited

Windmill Hill Business Park
Whitehill Way
Swindon
Wiltshire SN5 6PB
T +44 (0)8456 720 090
www.rwe.com

Registered office:
RWE Renewables UK
Swindon Limited
Windmill Hill Business Park
Whitehill Way
Swindon