



# Awel y Môr Offshore Wind Farm

## Category 6: Environmental Statement

**Volume 6, Annex 10.4: SLVIA Figures  
- Figure 16a-b (Blade Tip ZTV (MDS A)  
with Landscape Character and  
Viewpoint Locations)**

**Date: April 2022**

**Revision: A**

Application Reference: 6.6.10.4.24

Pursuant to: APFP Regulation 5(2)(a)



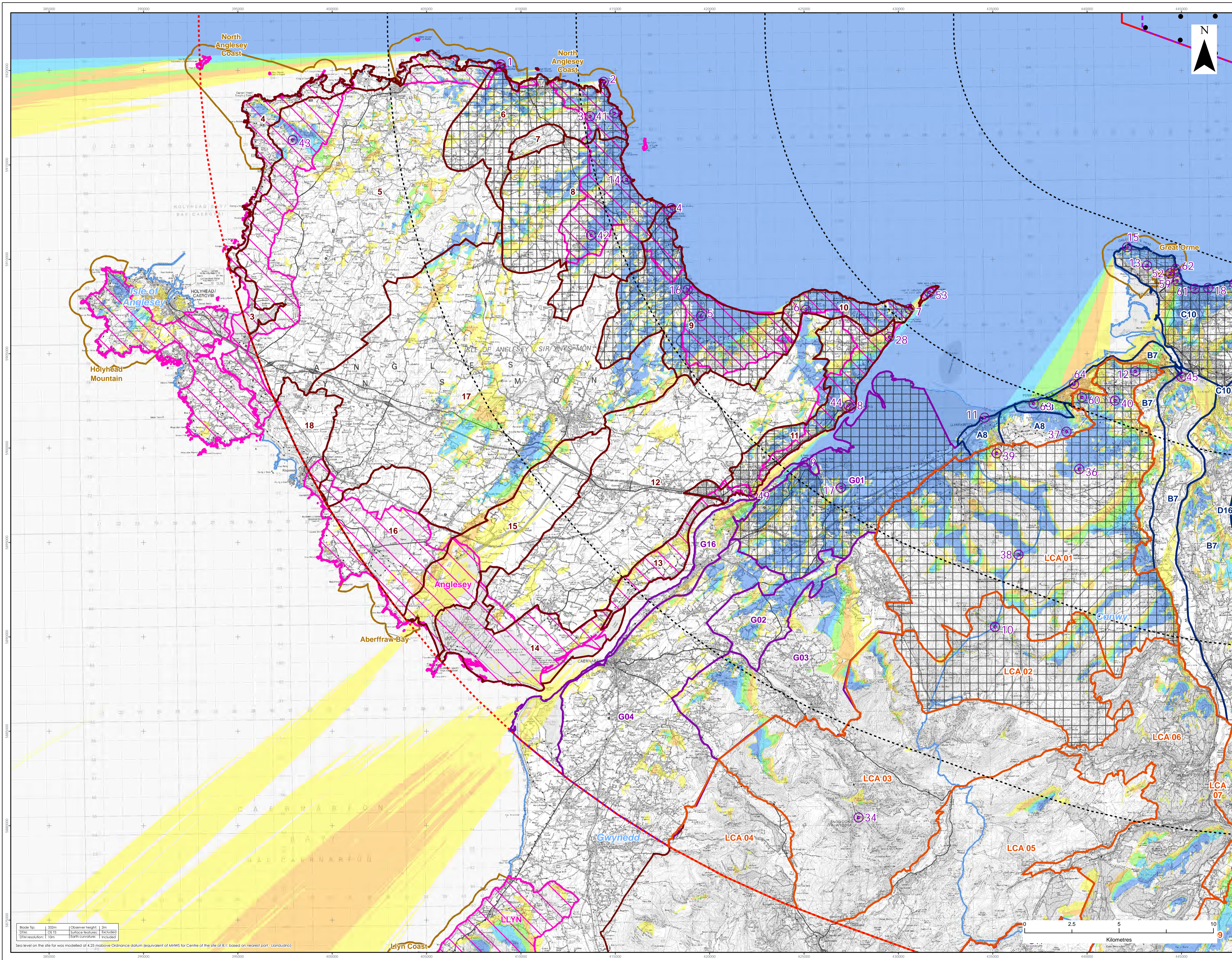
REVISION	DATE	STATUS/ REASON FOR ISSUE	AUTHOR:	CHECKED BY:	APPROVED BY:
A	April 2022	ES	OPEN	SLR/GoBe	RWE

[www.awelymor.cymru](http://www.awelymor.cymru)

RWE Renewables UK  
Swindon Limited

Windmill Hill Business Park  
Whitehill Way  
Swindon  
Wiltshire SN5 6PB  
T +44 (0)8456 720 090  
[www.rwe.com](http://www.rwe.com)

Registered office:  
RWE Renewables UK  
Swindon Limited  
Windmill Hill Business Park  
Whitehill Way  
Swindon



LEGEND

- Order Limits
- Array Area
- 10km Radii
- 50km Study Area
- Wind Turbine Generators (indicative locations)
- Viewpoint Location
- District Boundary
- Snowdonia National Park
- Heritage Coast
- Area of Outstanding Natural Beauty
- Landscape Character
  - Conwy & Denbighshire
  - Gwynedd
  - Isle of Anglesey
  - Snowdonia National Park
- Landscape Character identified for detailed assessment
- Zone of Theoretical Visibility (Blade Tip)
- No. of Turbines Theoretically Visible
  - 1 - 7
  - 8 - 14
  - 15 - 21
  - 22 - 28
  - 29 - 34
- Viewpoints
  - 1. Bull Bay near Amwlch - Wales Coast Path
  - 2. Point Lynas - PRoW to north of lighthouse
  - 3. Mynydd Eilan - near trig point
  - 4. Maelle Headland at sculpture
  - 5. Red Wharf Bay
  - 6. Bwrdd Arthur - north of trig point
  - 7. Penrhyn Point - north-east of parking
  - 8. Beaumaris - Wales Coast Path
  - 9. Bangor Pier (Southern End)
  - 10. Carnedd Llewelyn
  - 11. Llanfyllter
  - 12. Conwy Mountain
  - 13. Great Orme - near summit complex
  - 14. Wales Coast Path near Penrhyn (Troeth yr Or)
  - 15. Great Orme - Café
  - 16. Benllech Bay View Road
  - 17. Penrhyn Castle Terrace
  - 18. Llandudno paddling pool
  - 28. Trwyn y Penrhyn parking layby
  - 34. Snowdon summit
  - 36. Tŷ y Fan
  - 37. Cefn Coch Stone Circle
  - 38. Foel Fras
  - 39. North Wales Path at Gwery Fawr
  - 40. Above Capelulap - North Wales Path
  - 41. Wales Coast Path north-east of Rhôs-mynach-fawr
  - 42. Mynydd Bodol - Trig Point
  - 43. Mynydd y Gorn
  - 44. Beaumaris Castle
  - 45. Conwy Castle - Chapel Tower
  - 49. Meria Suspension Bridge
  - 52. Pen-y-Draig Camp at interpretation sign
  - 53. Puffin Island
  - 58. Little Orme at Trig Point
  - 59. Llandudno promenade - lifeboat slipway
  - 60. Foel Lus
  - 61. Llandudno Promenade near Venue Cymru
  - 62. Great Orme - Marine Drive, Wales Coast Path near Toll Booth
  - 63. A55 at Penrhynmawr
  - 64. A55 at Puffin Roundabout, Dwygyfych

Please see figure 7b for LCA Legend

Data Source:  
Corona OS data © Crown copyright and database right (2021). © Crown copyright.  
All rights reserved. (2021) Ordnance Survey Licence 0100310273. Contains public sector information licensed under the terms of the Open Government Licence v3.0.

PROJECT TITLE:  
**AWEL Y MŌR OFFSHORE WINDFARM**

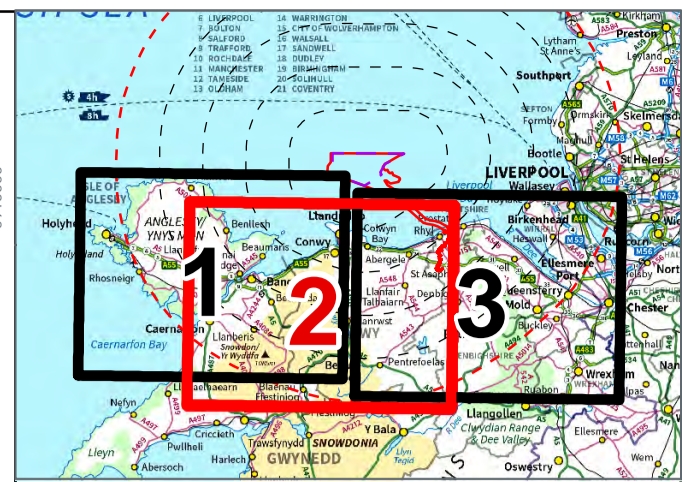
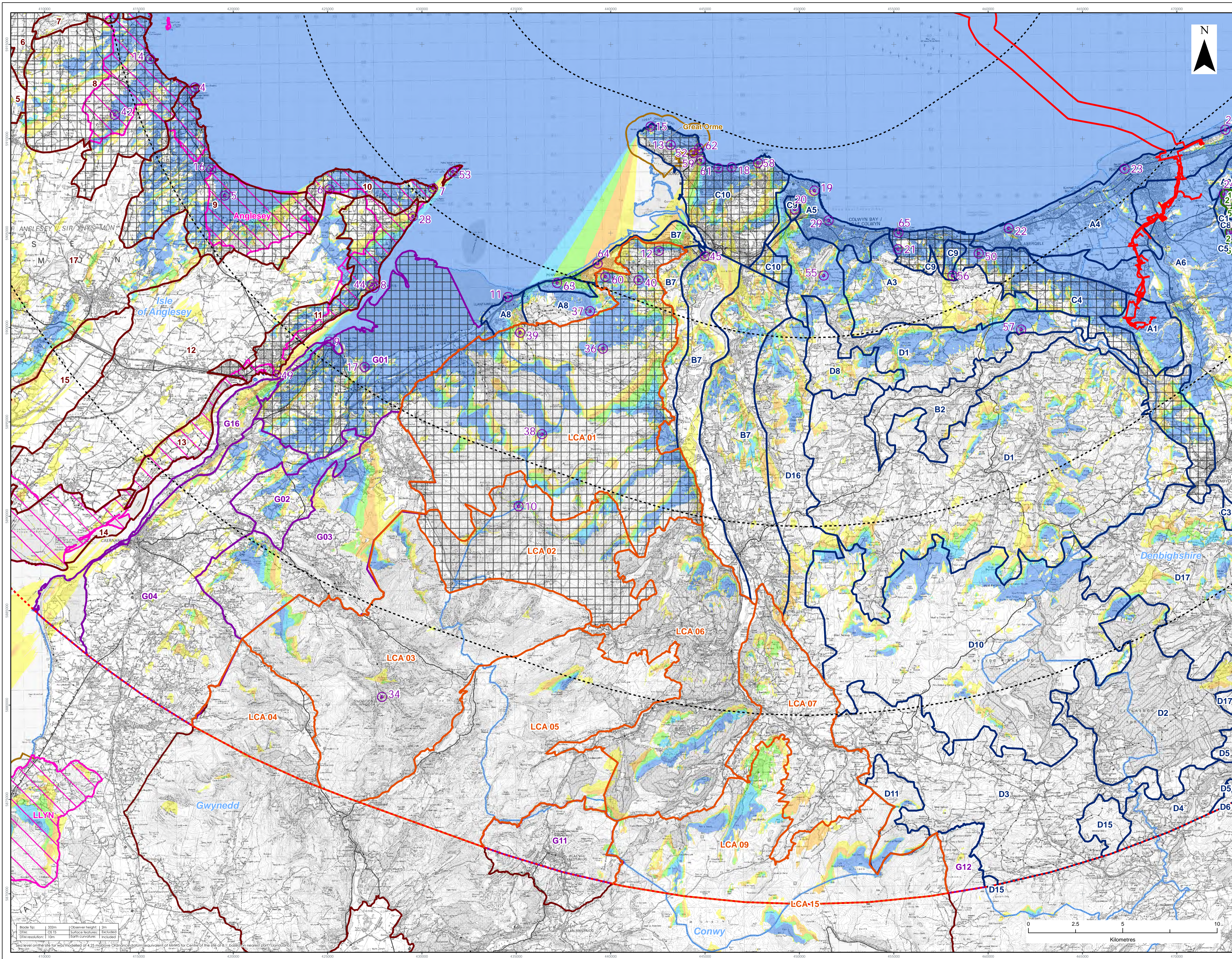
FIGURE TITLE:  
**Blade Tip ZTV with Landscape Character and Viewpoint Locations - Western area**

VER	DATE	REMARKS	Drawn	Checked
1	08/03/2022	For Issue	JM	LT

FIGURE NUMBER:  
**Figure 16a**

SCALE: 1:90,000  
PROFILES: A1  
DATUM: WGS84  
PROJECTION: UTM30N

**AWEL Y MŌR**  
Offshore Wind Farm



- LEGEND
- Order Limits
  - Array Area
  - 10km Radii
  - 50km Study Area
  - Viewpoint Location
  - District Boundary
  - Snowdonia National Park
  - Heritage Coast
  - Area of Outstanding Natural Beauty
  - Landscape Character
    - Clwydian Range and Dee Valley AONB
    - Conwy & Denbighshire
    - Gwynedd
    - Isle of Anglesey
    - Snowdonia National Park
    - Landscape Character identified for detailed assessment
  - Zone of Theoretical Visibility (Blade Tip)
  - No. of Turbines Theoretically Visible
    - 1 - 7
    - 8 - 14
    - 15 - 21
    - 22 - 28
    - 29 - 34
  - Viewpoints
    - 4. Maelre Headland at sculpture
    - 5. Red Wharf Bay
    - 6. Bardd Arthur - north of trig point
    - 7. Penmaen Point - north-east of parking
    - 8. Beaumaris - Wales Coast Path
    - 9. Bangor Pier (Southern End)
    - 10. Cornedd Uswelwem
    - 11. Llanfairfechan
    - 12. Conwy Mountain
    - 13. Great Orme - near summit complex
    - 14. Wales Coast Path near Penrhyn (Iathel yr Ora)
    - 15. Great Orme - Café
    - 16. Berlech Bay View Road
    - 17. Penrhyn Castle terrace
    - 18. Llandudno paddling pool
    - 19. Rhos-on-Sea
    - 20. Bryn Eryr
    - 21. Wynedd Marlan
    - 22. Abergele promenade
    - 23. Rhyll Aquarium
    - 24. Great Fawr
    - 25. Prestatyn Nova Centre
    - 26. Trwyn y Penrhyn parking layby
    - 27. Colwyn Bay promenade
    - 28. Snowdon summit
    - 36. Tal y Fan
    - 37. Cefn Coch Stone Circle
    - 38. Foel Iwan
    - 39. North Wales Path at Garreg Fawr
    - 40. Above Capelulo - North Wales Path
    - 42. Wynedd Badolun - Trig Point
    - 44. Beaumaris Castle
    - 45. Conwy Castle - Chapel Tower
    - 49. Menai Suspension Bridge
    - 50. Gwynedd Castle - Terrace
    - 52. Pen-y-Dinas Camp of interpretation sign
    - 53. Puffin Island
    - 54. Foel (Common land and hill east of Dyserth)
    - 55. Footpath above Cilgwyn Mawr
    - 56. Pen-y-carddyn-mawr
    - 57. Maelre sal
    - 58. Little Orme at Trig Point
    - 59. Llandudno promenade - lifeboat slipway
    - 60. Foel Lus
    - 61. Llandudno Promenade near Venue Cymru
    - 62. Great Orme - Marine Drive, Wales Coast Path near Toll Booth
    - 63. A55 at Penmaenmawr
    - 64. A55 at Puffin Roundabout, Dwygyfych
    - 65. A55 at jerry north of Penmaen Rhds

Zone of Theoretical Visibility (Blade Tip)

No. of Turbines Theoretically Visible

- 1 - 7
- 8 - 14
- 15 - 21
- 22 - 28
- 29 - 34

- Viewpoints
- 4. Maelre Headland at sculpture
  - 5. Red Wharf Bay
  - 6. Bardd Arthur - north of trig point
  - 7. Penmaen Point - north-east of parking
  - 8. Beaumaris - Wales Coast Path
  - 9. Bangor Pier (Southern End)
  - 10. Cornedd Uswelwem
  - 11. Llanfairfechan
  - 12. Conwy Mountain
  - 13. Great Orme - near summit complex
  - 14. Wales Coast Path near Penrhyn (Iathel yr Ora)
  - 15. Great Orme - Café
  - 16. Berlech Bay View Road
  - 17. Penrhyn Castle terrace
  - 18. Llandudno paddling pool
  - 19. Rhos-on-Sea
  - 20. Bryn Eryr
  - 21. Wynedd Marlan
  - 22. Abergele promenade
  - 23. Rhyll Aquarium
  - 24. Great Fawr
  - 25. Prestatyn Nova Centre
  - 26. Trwyn y Penrhyn parking layby
  - 27. Colwyn Bay promenade
  - 28. Snowdon summit
  - 36. Tal y Fan
  - 37. Cefn Coch Stone Circle
  - 38. Foel Iwan
  - 39. North Wales Path at Garreg Fawr
  - 40. Above Capelulo - North Wales Path
  - 42. Wynedd Badolun - Trig Point
  - 44. Beaumaris Castle
  - 45. Conwy Castle - Chapel Tower
  - 49. Menai Suspension Bridge
  - 50. Gwynedd Castle - Terrace
  - 52. Pen-y-Dinas Camp of interpretation sign
  - 53. Puffin Island
  - 54. Foel (Common land and hill east of Dyserth)
  - 55. Footpath above Cilgwyn Mawr
  - 56. Pen-y-carddyn-mawr
  - 57. Maelre sal
  - 58. Little Orme at Trig Point
  - 59. Llandudno promenade - lifeboat slipway
  - 60. Foel Lus
  - 61. Llandudno Promenade near Venue Cymru
  - 62. Great Orme - Marine Drive, Wales Coast Path near Toll Booth
  - 63. A55 at Penmaenmawr
  - 64. A55 at Puffin Roundabout, Dwygyfych
  - 65. A55 at jerry north of Penmaen Rhds
- Please see figure 7b for LCA Legend

Data Source:  
Contains OS data © Crown copyright and database right (2021). © Crown copyright.  
All rights reserved. (2021) Ordnance Survey Licence 010031673. Contains public sector information licensed under the terms of the Open Government Licence v3.0.

PROJECT TITLE:  
*AWEL Y MŌR OFFSHORE WINDFARM*

FIGURE TITLE:  
**Blade Tip ZTV with Landscape Character and Viewpoint Locations - Central area**

VER	DATE	REMARKS	Drawn	Checked
1	08/03/2022	For Issue	JM	LT

FIGURE NUMBER:  
**Figure 16b**

SCALE: 1:90,000 PROFILE: A1 DATUM: WGS84 PROJECTION: UTM10N

AWEL Y MŌR  
Offshore Wind Farm



RWE Renewables UK  
Swindon Limited

Windmill Hill Business Park  
Whitehill Way  
Swindon  
Wiltshire SN5 6PB  
T +44 (0)8456 720 090  
[www.rwe.com](http://www.rwe.com)

Registered office:  
RWE Renewables UK  
Swindon Limited  
Windmill Hill Business Park  
Whitehill Way  
Swindon