



# Awel y Môr Offshore Wind Farm

## Category 6: Environmental Statement

**Volume 6, Annex 10.4: SLVIA Figures  
- Figure 17.1a-b (Blade Tip ZTV (MDS  
A) with Visual Receptors and  
Viewpoint Locations)**

**Date: April 2022**

**Revision: A**

Application Reference: 6.6.10.4.26

Pursuant to: APFP Regulation 5(2)(a)



REVISION	DATE	STATUS/ REASON FOR ISSUE	AUTHOR:	CHECKED BY:	APPROVED BY:
A	April 2022	ES	OPEN	SLR/GoBe	RWE

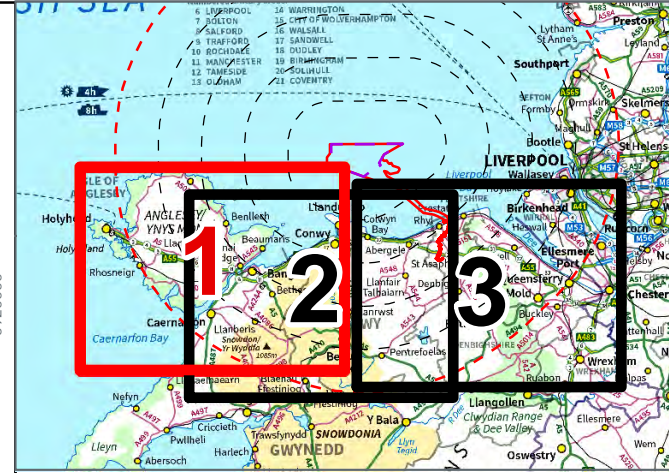
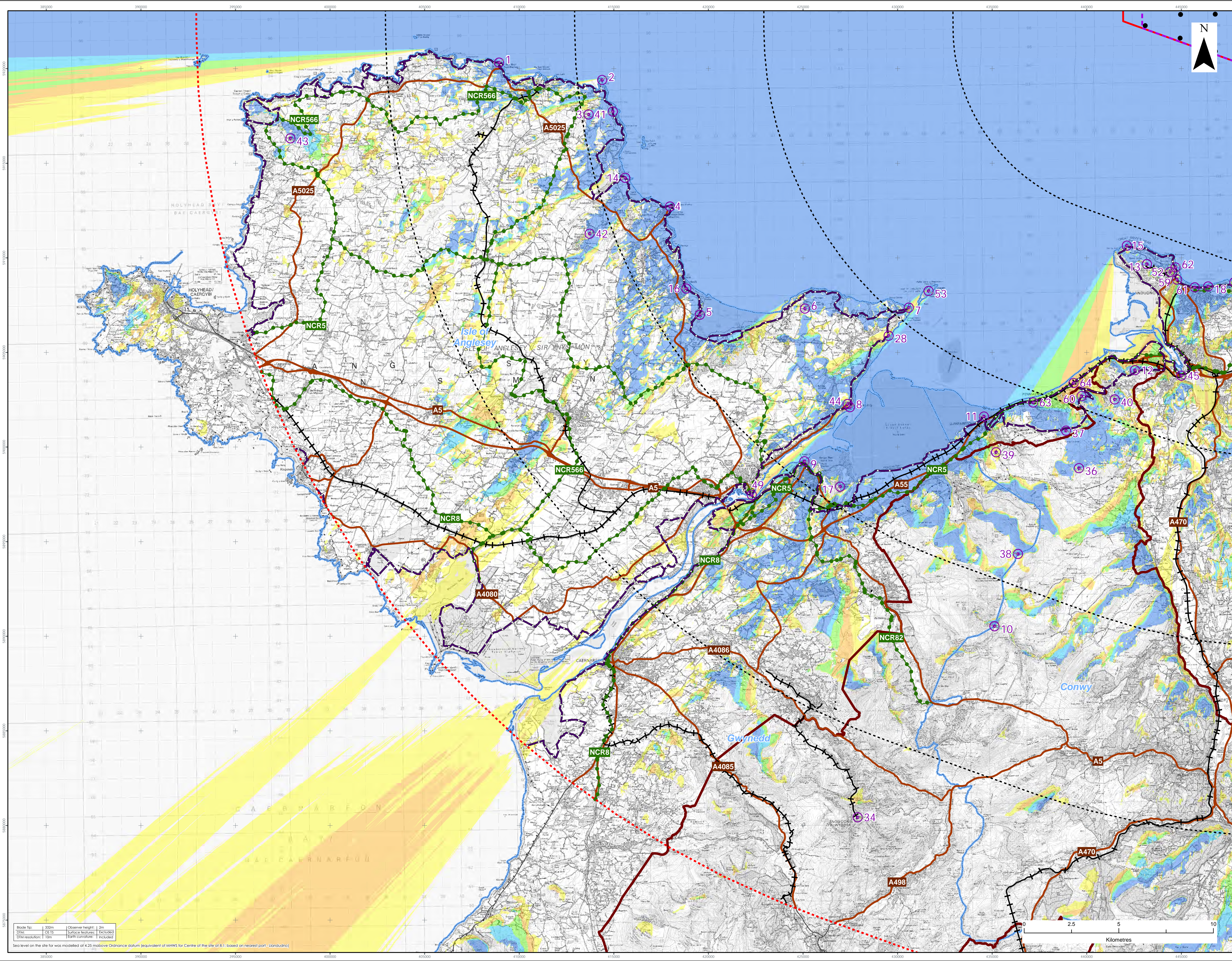
[www.awelymor.cymru](http://www.awelymor.cymru)

RWE Renewables UK  
Swindon Limited

Windmill Hill Business Park  
Whitehill Way  
Swindon  
Wiltshire SN5 6PB  
T +44 (0)8456 720 090  
[www.rwe.com](http://www.rwe.com)

Registered office:  
RWE Renewables UK  
Swindon Limited  
Windmill Hill Business Park  
Whitehill Way  
Swindon





**LEGEND**

- Order Limits
- Array Area
- 10km Radii
- 50km Study Area
- Wind Turbine Generators (indicative locations)
- Viewpoint Location
- Snowdonia National Park
- District Boundary
- Wales Coast Path
- National Cycle Network
- Railway
- Primary and A Road
- Zone of Theoretical Visibility (Blade Tip)
- No. of Turbines Theoretically Visible

No. of Turbines Theoretically Visible
1 - 7
8 - 14
15 - 21
22 - 28
29 - 34

- Viewpoints**
1. Bull Bay near Amthwch - Wales Coast Path
  2. Point Lynas - 'Plog' to north of lighthouse
  3. Mynydd Eilan - near trig point
  4. Moelfre Headland at sculpture
  5. Red Wharf Bay
  6. Bwrdd Arthur - north of trig point
  7. Penmon Point - north-east of parking
  8. Beaumaris - Wales Coast Path
  9. Bangor Pier (Southern End)
  10. Carnedd Llewelyn
  11. Llanfairfechan
  12. Conwy Mountain
  13. Great Orme - near summit complex
  14. Wales Coast Path near Penrhyn (Iroeth yr Ora)
  15. Great Orme - Café
  16. Benllech Bay View Road
  17. Penrhyn Castle terrace
  18. Llandudno paddling pool
  28. Trwyn y Penrhyn parking layby
  34. Snowdon summit
  36. Tal y Fan
  37. Cefn Coch Stone Circle
  38. Foel Fras
  39. North Wales Path at Garmg Fawr
  40. Above Capelulo - North Wales Path
  41. Wales Coast Path north-east of Rhôs-mynach-fawr
  42. Mynydd Bodafon - Trig Point
  43. Mynydd y Garm
  44. Beaumaris Castle
  45. Conwy Castle - Chapel Tower
  49. Merial Suspension Bridge
  52. Pen-y-Dinas Camp at Interpretation sign
  53. Puffin Island
  58. Little Orme at Trig Point
  59. Llandudno promenade - lifeboat slipway
  60. Foel Lys
  61. Llandudno Promenade near Venue Cymru
  62. Great Orme - Marine Drive, Wales Coast Path near Toll Booth
  63. A55 at Penrhynmawr
  64. A55 at Puffin Roundabout, Dwygyfylch

**Data Source:**  
Contains OS data © Crown copyright and database right (2021). © Crown copyright. All rights reserved. (2021). Ordnance Survey Licence 0100331673. Contains public sector information licensed under the terms of the Open Government Licence v3.0.

**PROJECT TITLE:**  
AWEL Y MŌR OFFSHORE WINDFARM

**FIGURE TITLE:**  
Blade Tip ZTV with Visual Receptors and Viewpoint Locations - Western area

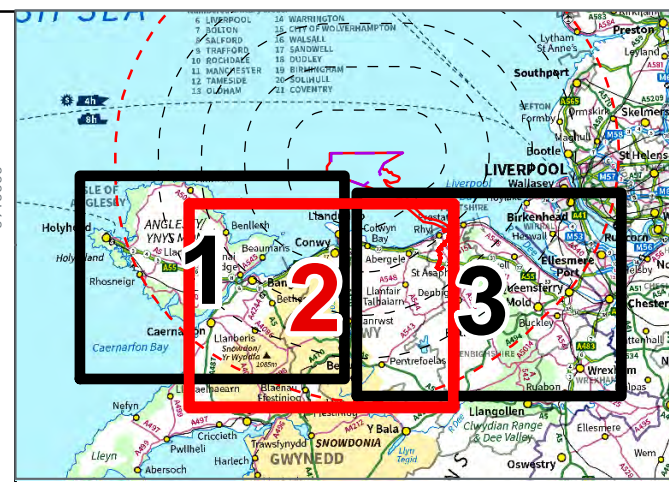
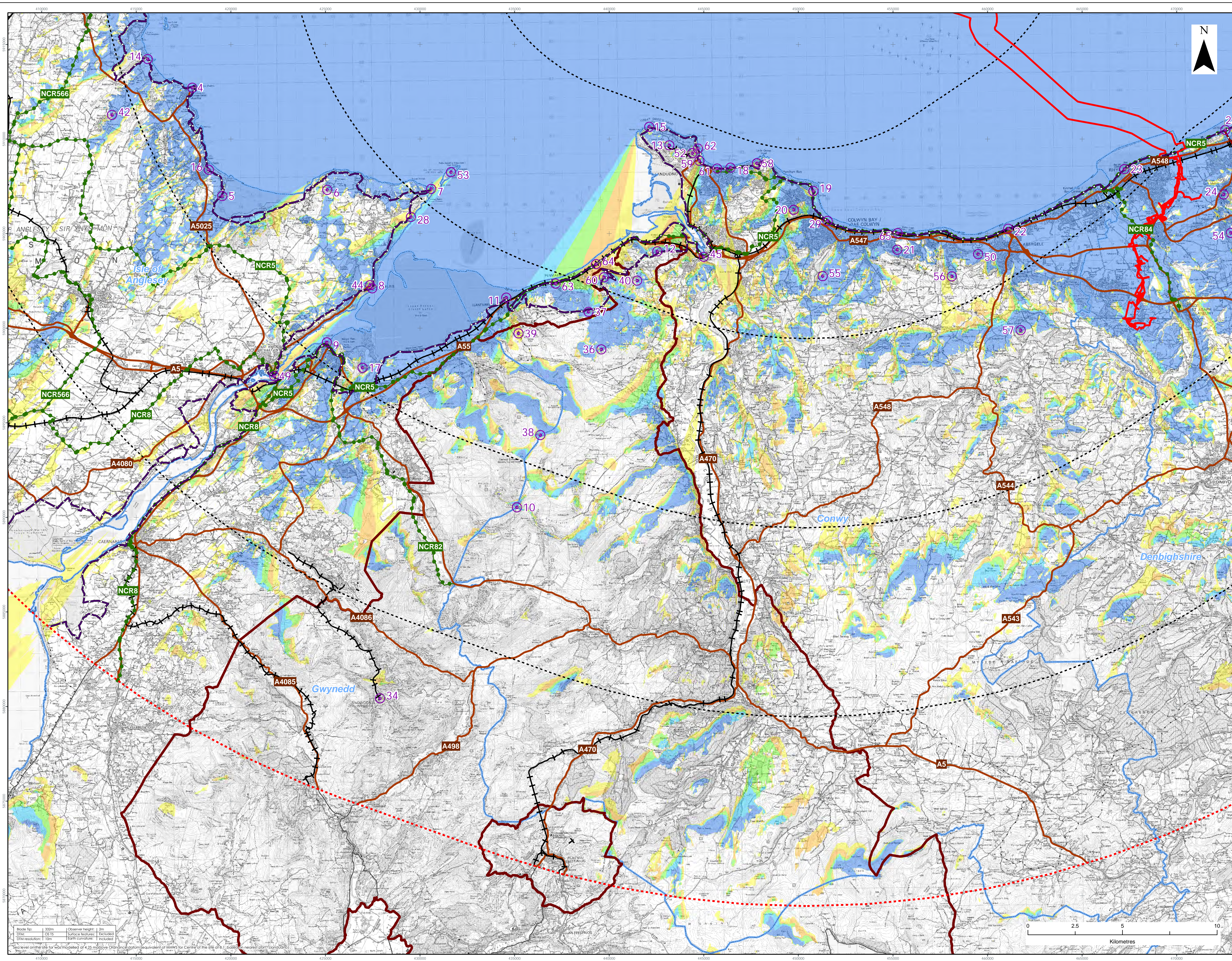
VER	DATE	REMARKS	Drawn	Checked
1	08/03/2022	For Issue	JM	LT

**FIGURE NUMBER:**  
Figure 17.1a

**SCALE:**  
1:90,000  
PROF: A1  
DATA: WGS84  
PROJECTION: UTM30N

**AWEL Y MŌR**  
Offshore Wind Farm





**LEGEND**

- Order Limits
- Array Area
- 10km Radii
- 50km Study Area
- Viewpoint Location
- Snowdonia National Park
- District Boundary
- Offa's Dyke Path
- Wales Coast Path
- National Cycle Network
- Railway
- Primary and A Road

**Zone of Theoretical Visibility (Blade Tip)**

**No. of Turbines Theoretically Visible**

- 1 - 7
- 8 - 14
- 15 - 21
- 22 - 28
- 29 - 34

- Viewpoints**
- 1. Moelre Headland at sculpture
  - 2. Red Wharf Bay
  - 3. Bwrdd Arthur - north of trig point
  - 4. Penmon Point - north-east of parking
  - 5. Beaumaris - Wales Coast Path
  - 6. Banger Pier (Southern End)
  - 7. Camedd Llewelyn
  - 8. Llanfellech
  - 9. Conwy Mountain
  - 10. Great Orme - near summit complex
  - 11. Wales Coast Path near Penrhyn (Traeth yr Ora)
  - 12. Great Orme - Café
  - 13. Benllech Bay View Road
  - 14. Penrhyn Castle terrace
  - 15. Llandudno paddling pool
  - 16. Rhos-on-Sea
  - 17. Bryn Eryn
  - 18. Mynydd Marian
  - 19. Abergele promenade
  - 20. Rhyl Aquarium
  - 21. Craig Fawr
  - 22. Prestatyn Nova Centre
  - 23. Twyn y Penrhyn parking layby
  - 24. Colwyn Bay promenade
  - 25. Snowdon summit
  - 26. Tal y Fan
  - 27. Celyn Coch Stone Circle
  - 28. Foel Ius
  - 29. North Wales Path at Garreg Fawr
  - 30. Above Capelulo - North Wales Path
  - 31. Mynydd Bodafon - Trig Point
  - 32. Beaumaris Castle
  - 33. Conwy Castle - Chapel Tower
  - 34. Menai Suspension Bridge
  - 35. Gwrych Castle - Terrace
  - 36. Pen-y-Dinas Camp at interpretation sign
  - 37. Puffin Island
  - 38. y Foel (Common land and hill east of Dysarth)
  - 39. Footpath above Clogwyn Mawr
  - 40. Pen-y-cadwyn-mawr
  - 41. Moelre Isaf
  - 42. Little Orme at Trig Point
  - 43. Llandudno promenade - lifeboat slipway
  - 44. Foel Lys
  - 45. Llandudno Promenade near Venue Cymru
  - 46. Great Orme - Marine Drive, Wales Coast Path near Tol Booth
  - 47. A55 at Penmaenmawr
  - 48. A55 at Puffin Roundabout, Dwvgyfych
  - 49. A55 at jetty north of Penmaen Rhôs

**Data Source:**  
Contains OS data © Crown copyright and database right (2021). © Crown copyright. All rights reserved. (2021). Ordnance Survey Licence 010031473. Contains public sector information licensed under the terms of the Open Government Licence v3.0.

**PROJECT TITLE:**  
AWEL Y MŌR OFFSHORE WINDFARM

**FIGURE TITLE:**  
Blade Tip ZTV with Visual Receptors and Viewpoint Locations - Central area

VER	DATE	REMARKS	Drawn	Checked
1	08/03/2022	For Issue	JM	LT

**FIGURE NUMBER:**  
Figure 17.1b

**SCALE:**  
1:90,000  
PROF: A1  
DATUM: WGS84  
PROJECTION: UTM10N

**AWEL Y MŌR**  
Offshore Wind Farm





RWE Renewables UK  
Swindon Limited

Windmill Hill Business Park  
Whitehill Way  
Swindon  
Wiltshire SN5 6PB  
T +44 (0)8456 720 090  
[www.rwe.com](http://www.rwe.com)

Registered office:  
RWE Renewables UK  
Swindon Limited  
Windmill Hill Business Park  
Whitehill Way  
Swindon