



Awel y Môr Offshore Wind Farm

Category 6: Environmental Statement

**Volume 6, Annex 10.4: SLVIA Figures
- Figure 17.2a-b (Hub Height Tip ZTV
(MDS A) with Visual Receptors and
Viewpoint Locations)**

Date: April 2022

Revision: A

Application Reference: 6.6.10.4.28

Pursuant to: APFP Regulation 5(2)(a)



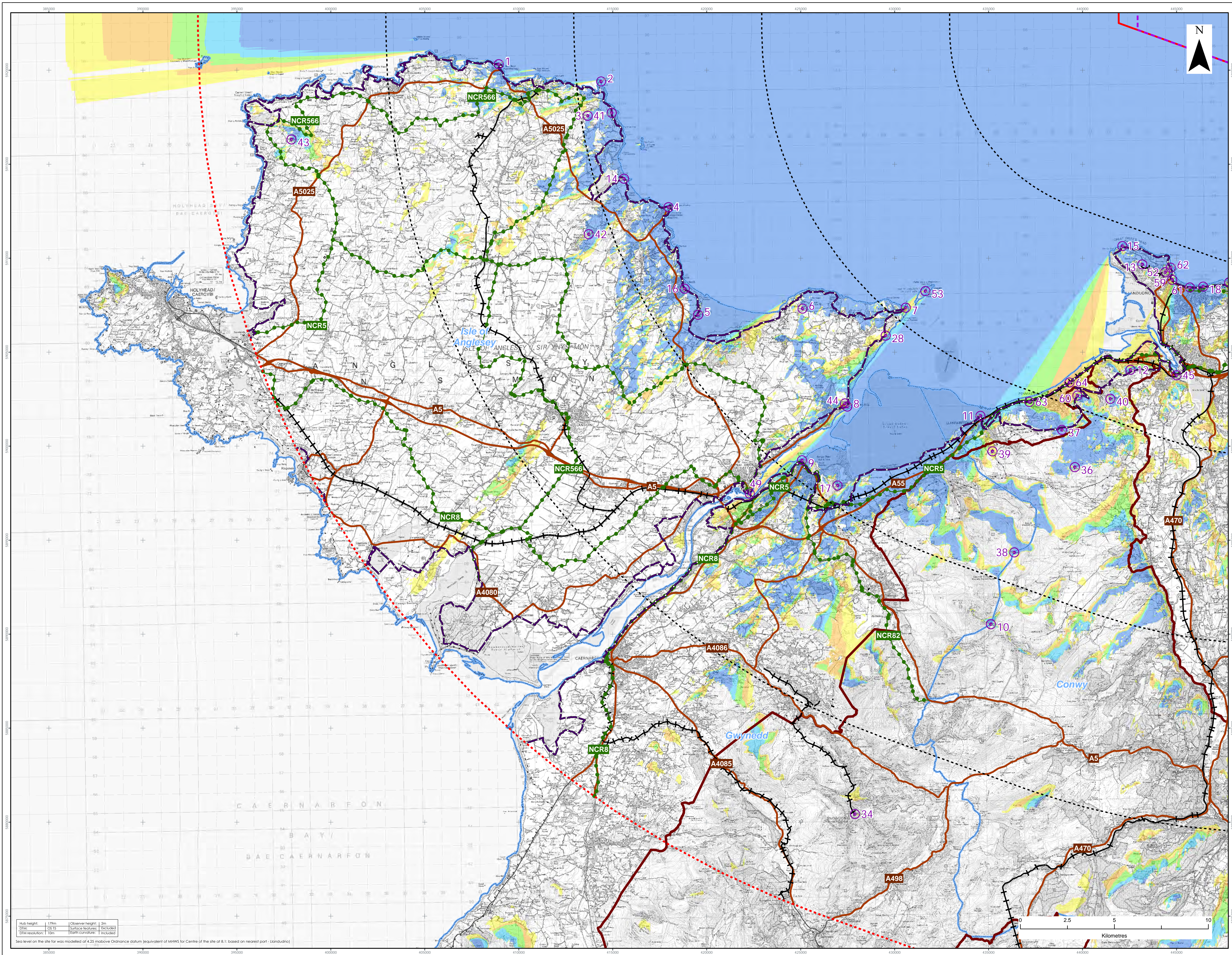
REVISION	DATE	STATUS/ REASON FOR ISSUE	AUTHOR:	CHECKED BY:	APPROVED BY:
A	April 2022	ES	OPEN	SLR/GoBe	RWE

www.awelymor.cymru

RWE Renewables UK
Swindon Limited

Windmill Hill Business Park
Whitehill Way
Swindon
Wiltshire SN5 6PB
T +44 (0)8456 720 090
www.rwe.com

Registered office:
RWE Renewables UK
Swindon Limited
Windmill Hill Business Park
Whitehill Way
Swindon



LEGEND

- Order Limits
- Array Area
- 10km Radii
- 50km Study Area
- Viewpoint Location
- Snowdonia National Park
- District Boundary
- Wales Coast Path
- National Cycle Network
- Railway
- Primary and A Road

Zone of Theoretical Visibility (Hub height)

No. of Turbines Theoretically Visible

- 1 - 7
- 8 - 14
- 15 - 21
- 22 - 28
- 29 - 34

Viewpoints

1. Bull Bay near Amŵch - Wales Coast Path
2. Point Llynas - PROW to north of lighthouse
3. Myrnydd Eilian - near trig point
4. Moelfre Headland at sculpture
5. Red Wharf Bay
6. Bwryst Arthur - north of trig point
7. Penmon Point - north-east of parking
8. Beaumaris - Wales Coast Path
9. Bangor Pier (Southern End)
10. Carnedd Llewelyn
11. Llanfairfechan
12. Corwen Mountain
13. Great Orme - near summit complex
14. Wales Coast Path near Penrhyn (Traeth y Ora)
15. Great Orme - Café
16. Benllech Bay View Road
17. Penrhyn Castle terrace
18. Llandudno paddling pool
28. Trwyn y Penrhyn parking layby
36. Tal y Fan
37. Cefn Coch Stone Circle
38. Foel Fras
39. North Wales Path at Gaeaf Fawr
40. Above Capelulo - North Wales Path
41. Wales Coast Path north-east of Rhôs-mymach-fawr
42. Myrnydd Bodafon - Trig Point
43. Myrnydd y Garn
44. Beaumaris Castle
45. Corwen Castle - Chapel Tower
52. Menai Suspension Bridge
53. Penry-Dinos Camp at interpretation sign
58. Little Orme at Trig Point
60. Foel Lys
61. Llandudno Promenade near Venue Cymru
62. Great Orme - Marine Drive, Wales Coast Path near Tal Boeth
63. A55 at Penmaenmawr
64. A55 at Puffin Roundabout, Dwyrhyfych

Data Source:
Corona OS data © Crown copyright and database right (2021). © Crown copyright.
All rights reserved. (2021). Ordnance Survey Licence 0100331673. Contains public sector information licensed under the terms of the Open Government Licence v3.0.

PROJECT TITLE:
AWEL Y MŌR OFFSHORE WINDFARM

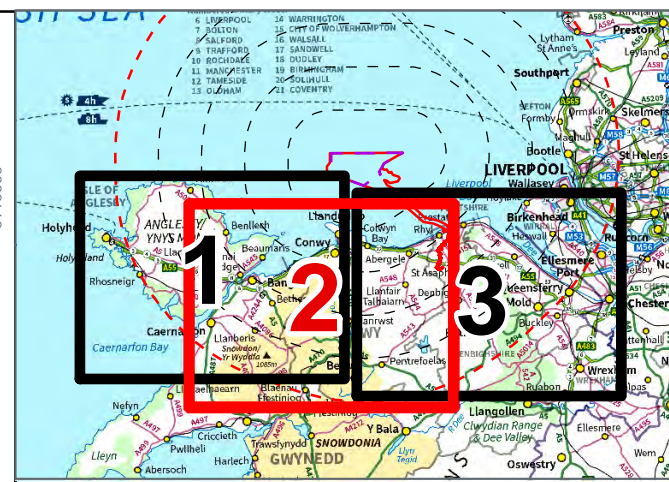
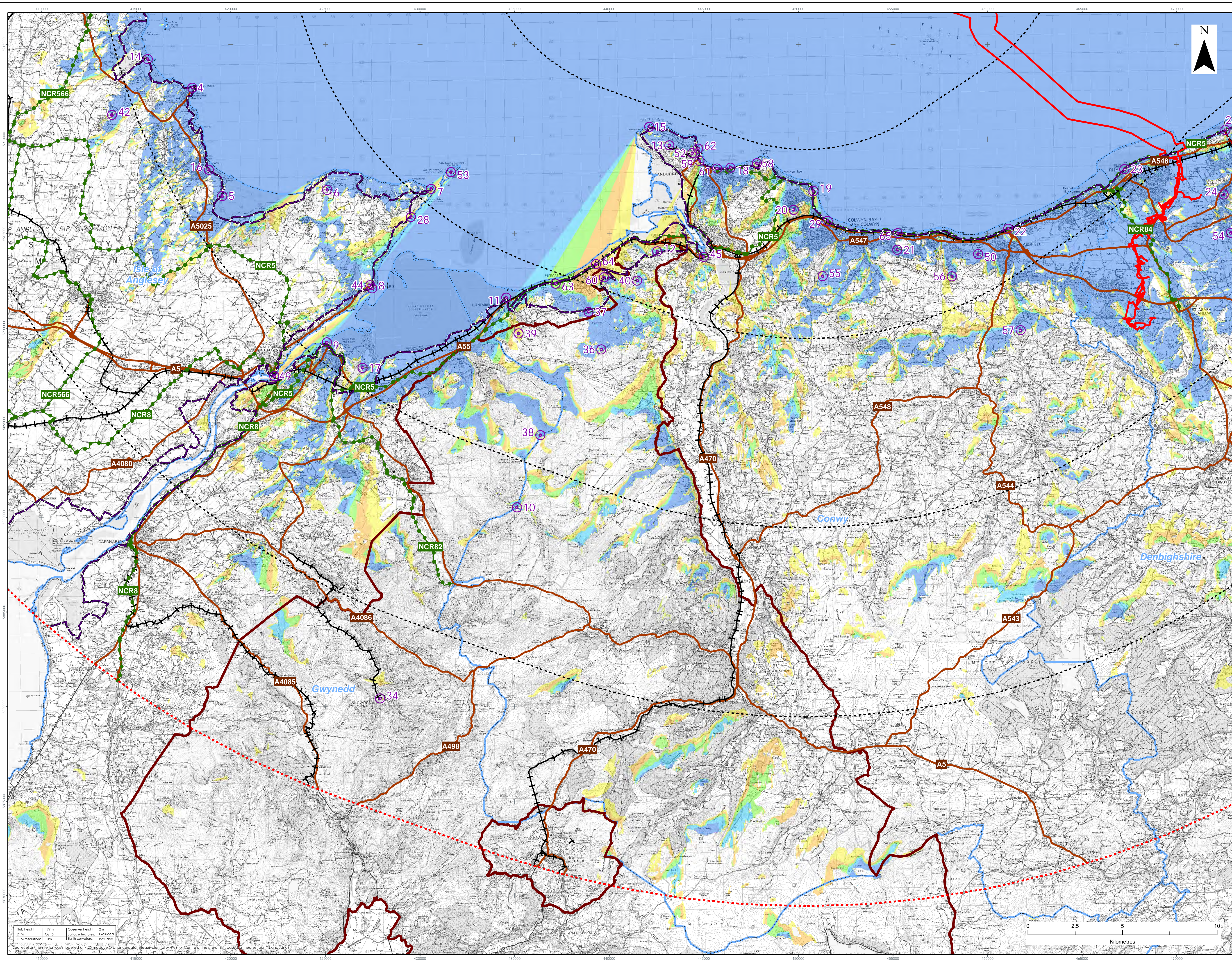
FIGURE TITLE:
Hub Height ZTV with Visual Receptors and Viewpoint Locations - Western area

VER	DATE	REMARKS	Drawn	Checked
1	08/03/2022	For Issue	JM	LT

FIGURE NUMBER:
Figure 17.2a

SCALE: 1:90,000 **PROFITE:** A1 **DATUM:** WGS84 **PROJECTION:** UTM30N

AWEL Y MŌR
Offshore Wind Farm



LEGEND

Order Limits

Array Area

10km Radii

50km Study Area

Viewpoint Location

Snowdonia National Park

District Boundary

Offa's Dyke Path

Wales Coast Path

National Cycle Network

Railway

Primary and A Road

Zone of Theoretical Visibility (Hub height)
No. of Turbines Theoretically Visible

1 - 7

8 - 14

15 - 21

22 - 28

29 - 34

Viewpoints
4. Maelfre Headland at sculpture
5. Red Wharf Bay
6. Bwrdd Arthur - north of trig point
7. Penmon Point - north-east of parking
8. Beaumaris - Wales Coast Path
9. Ranger Pier (Southern End)
10. Carnedd Llewelyn
11. Llanfairfechan
12. Conwy Mountain
13. Great Orme - near summit complex
14. Wales Coast Path near Penrhyn (Traeth y Orla)
15. Great Orme - Cae
16. Bontlegh Bay View Road
17. Penrhyn Castle terrace
18. Llandudno paddling pool
19. Rhos-on-Sea
20. Bryn Ewlyn
21. Myrddal Marion
22. Abergelge promenade
23. Rhyl Aquarium
24. Grog Fawr
25. Prestatyn Nova Centre
26. Twyn y Penrhyn parking layby
27. Colwyn Bay promenade
28. Snowdon summit
29. Tal y Fan
30. Cefn Coch Stone Circle
31. Foel Fras
32. North Wales Path at Grog Fawr
33. Above Capellulo - North Wales Path
34. Myrddal Bodafon - Trig Point
35. Beaumaris Castle
36. Conwy Castle - Chapel Tower
37. Menai Suspension Bridge
38. Gwynch Castle - Terrace
39. Pen-y-Din Camp at interpretation sign
40. Puffin Island
41. y Foel (Common land and hill east of Dysarth)
42. Footpath above Cilgwynn Mawr
43. Pen-y-corddyn-mawr
44. Maelfre Isaf
45. Little Orme at Trig Point
46. Llandudno promenade - lifeboat slipway
47. Foel Lus
48. Llandudno Promenade near Venue Cymru
49. Great Orme - Marine Drive, Wales Coast Path near Tal Boeth
50. A55 at Penmaenmawr
51. A55 at Puffin Roundabout, Dwyrhyfych
52. A55 at jetty north of Penmaen Rhôs

Data Source:
Contains OS data © Crown copyright and database right (2021). © Crown copyright.
All rights reserved. (2021) Ordnance Survey Licence 0100313273. Contains public sector
information licensed under the terms of the Open Government Licence v3.0.

PROJECT TITLE:
AWEL Y MŌR OFFSHORE WINDFARM

FIGURE TITLE:
**Hub Height ZTV with Visual Receptors
and Viewpoint Locations - Central area**

VER	DATE	REMARKS	Drawn	Checked
1	08/03/2022	For Issue	JM	LT

FIGURE NUMBER:
Figure 17.2b

SCALE: 1:50,000
PROFILE: A1
DATUM: WGS84
PROJECTION: UTM30N

Open Space Solutions
AWEL Y MŌR
Offshore Wind Farm



RWE Renewables UK
Swindon Limited

Windmill Hill Business Park
Whitehill Way
Swindon
Wiltshire SN5 6PB
T +44 (0)8456 720 090
www.rwe.com

Registered office:
RWE Renewables UK
Swindon Limited
Windmill Hill Business Park
Whitehill Way
Swindon