



# Awel y Môr Offshore Wind Farm

## Category 6: Environmental Statement

**Volume 6, Annex 10.4: SLVIA Figures  
- Figure 18a-b (Blade Tip ZTV (MDS  
A) with Landscape Designations  
and Viewpoint Locations )**

**Date: April 2022**

**Revision: A**

Application Reference: 6.6.10.4.30

Pursuant to: APFP Regulation 5(2)(a)



REVISION	DATE	STATUS/ REASON FOR ISSUE	AUTHOR:	CHECKED BY:	APPROVED BY:
A	April 2022	ES	OPEN	SLR/GoBe	RWE

[www.awelymor.cymru](http://www.awelymor.cymru)

RWE Renewables UK  
Swindon Limited

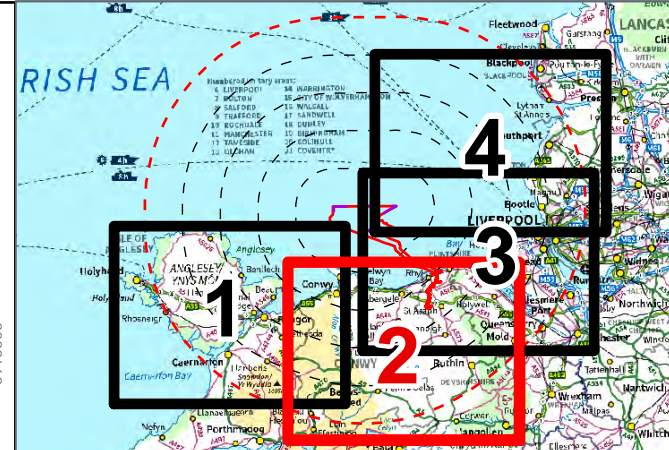
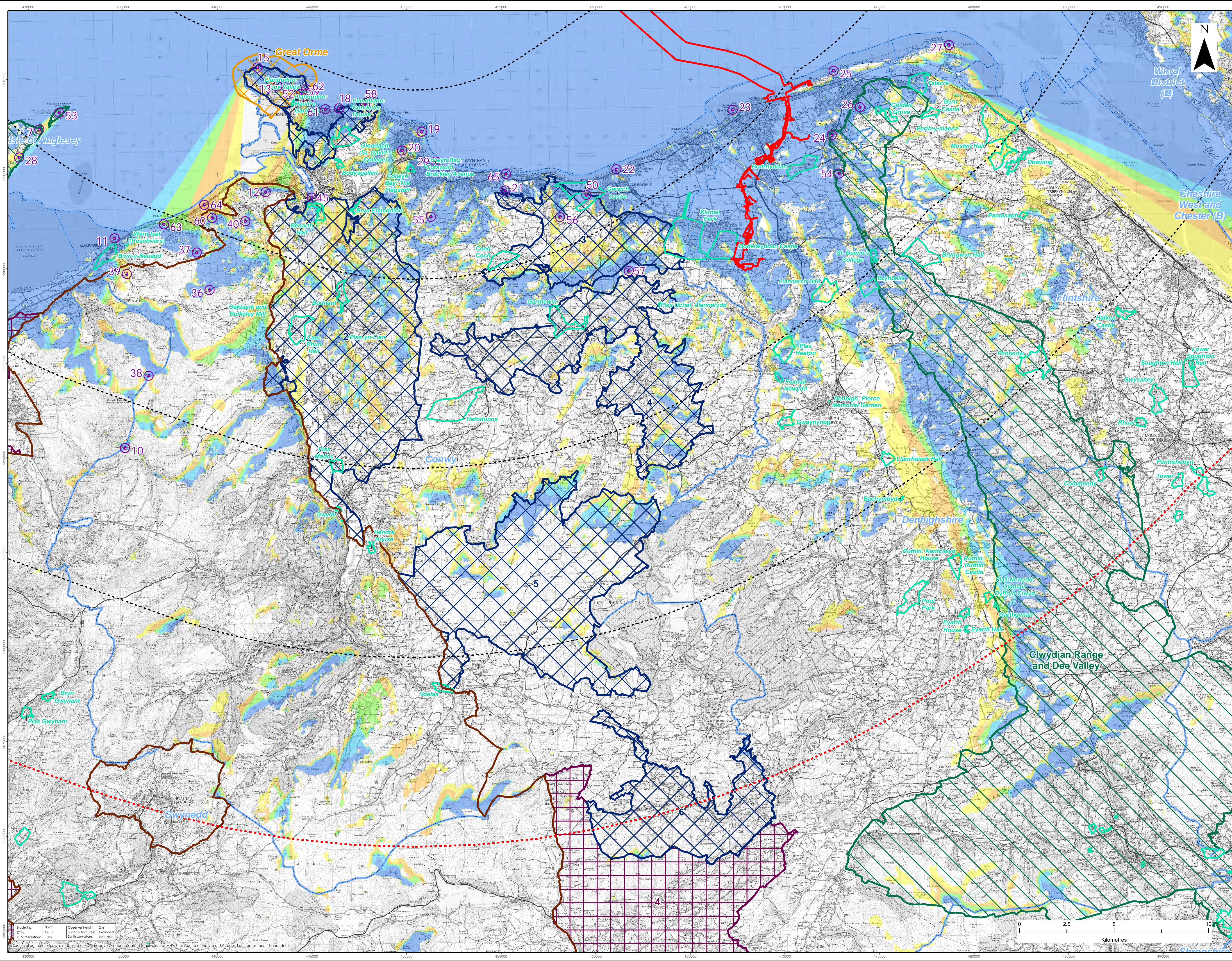
Windmill Hill Business Park  
Whitehill Way  
Swindon  
Wiltshire SN5 6PB  
T +44 (0)8456 720 090  
[www.rwe.com](http://www.rwe.com)

Registered office:  
RWE Renewables UK  
Swindon Limited  
Windmill Hill Business Park  
Whitehill Way  
Swindon









- LEGEND**
- Order Limits
  - Array Area
  - 10km Radii
  - 50km Study Area
  - Viewpoint Location
  - District Boundary
  - Snowdonia National Park
  - Area of Outstanding Natural Beauty
  - Heritage Coast
  - Special Landscape Area (Conwy)
  - Special Landscape Area (Gwynedd)
  - Registered Historic Parks and Gardens (Wales)
  - Zone of Theoretical Visibility (Blade Tip)
  - No. of Turbines Theoretically Visible
- | No. of Turbines Theoretically Visible |
|---------------------------------------|
| 1 - 7                                 |
| 8 - 14                                |
| 15 - 21                               |
| 22 - 28                               |
| 29 - 34                               |

- Special Landscape Area (Isle of Anglesey & Gwynedd)**
- 3- Gwynedd & Dyfnwyllog Estuary Landscapes
  - 4- Bala Hinterland
  - 7- North-Western Fringes of Snowdonia
- Special Landscape Area (Conwy)**
- 1- Gwynedd & Creuddyn Peninsula
  - 2- Conwy Valley
  - 3- Belwas yn Rhos
  - 4- Elwy & Aled Valley
  - 5- Wreiddfa
  - 6- Cerrigdrudion and the A5 Corridor
- Viewpoints**
- 7- Penmon Point - north-east of parking
  - 10- Carnedd Ithelwyllyn
  - 11- Llanfairfach
  - 12- Conwy Mountain
  - 13- Great Orme - near summit complex
  - 15- Great Orme - Café
  - 18- Llandudno paddling pool
  - 19- Rhos-on-Sea
  - 20- Bryn Ewyr
  - 21- Wynydd Morlan
  - 22- Abergele promenade
  - 23- Rhyl Aquarium
  - 24- Graig Fawr
  - 25- Prestatyn Nova Centre
  - 26- Brynllwyn Viewpoint (Prestatyn Hillside viewpoint, Gwaenygor)
  - 27- Point of Ayr
  - 28- Twyn y Penrhyn parking layby
  - 29- Colwyn Bay promenade
  - 36- Tal y Fan
  - 37- Cefn Coch Stone Circle
  - 38- Foel Fras
  - 39- North Wales Path at Garreg Fawr
  - 40- Above Capelulo - North Wales Path
  - 45- Conwy Castle - Chapel Tower
  - 50- Gwynedd Castle - Terrace
  - 52- Pen-y-Dinas Camp at interpretation sign
  - 53- Puffin Island
  - 54- y Foel (Common land and hill east of Dyserth)
  - 55- Footpath above Cilgwyn Mawr
  - 56- Pen-y-corddyn-mawr
  - 57- Moelfre Isaf
  - 58- Little Orme at Trig Point
  - 59- Llandudno promenade - lifeboat slipway
  - 60- Foel Lus
  - 61- Llandudno Promenade near Venue Cymru
  - 62- Great Orme - Marine Drive, Wales Coast Path near Toll Booth
  - 63- A55 at Penmaenmawr
  - 64- A55 at Puffin Roundabout, Dwyrhyfych
  - 65- A55 at jetty north of Penmaen Rhos

DATA SOURCE:  
Ordnance OS data © Crown copyright and database right (2021). © Crown copyright. All rights reserved. (2021). Ordnance Survey Licence 010031473. Contains public sector information licensed under the terms of the Open Government Licence v3.0.

PROJECT TITLE:  
**AWEL Y MŌR OFFSHORE WINDFARM**

FIGURE TITLE:  
**Blade Tip ZTV (MDS A) with Landscape Designations - Central area**

VER	DATE	REMARKS	Drawn	Checked
1	08/03/2022	For Issue	JM	LT

FIGURE NUMBER:  
**Figure 18b**

SCALE: 1:90,000 PLOT SIZE: A1 DATUM: WGS84 PROJECTION: UTM38N

**AWEL Y MŌR**  
Offshore Wind Farm





RWE Renewables UK  
Swindon Limited

Windmill Hill Business Park  
Whitehill Way  
Swindon  
Wiltshire SN5 6PB  
T +44 (0)8456 720 090  
[www.rwe.com](http://www.rwe.com)

Registered office:  
RWE Renewables UK  
Swindon Limited  
Windmill Hill Business Park  
Whitehill Way  
Swindon