



Awel y Môr Offshore Wind Farm

Category 6: Environmental Statement

Volume 6, Annex 10.4: SLVIA Figures - Figure 21a-b (Hub Height Aviation Lighting ZTV (MDS A))

Date: April 2022

Revision: A

Application Reference: 6.6.10.4.34

Pursuant to: APFP Regulation 5(2)(a)



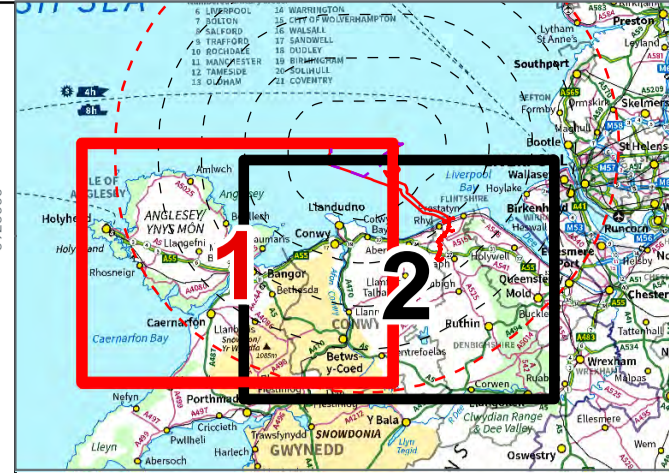
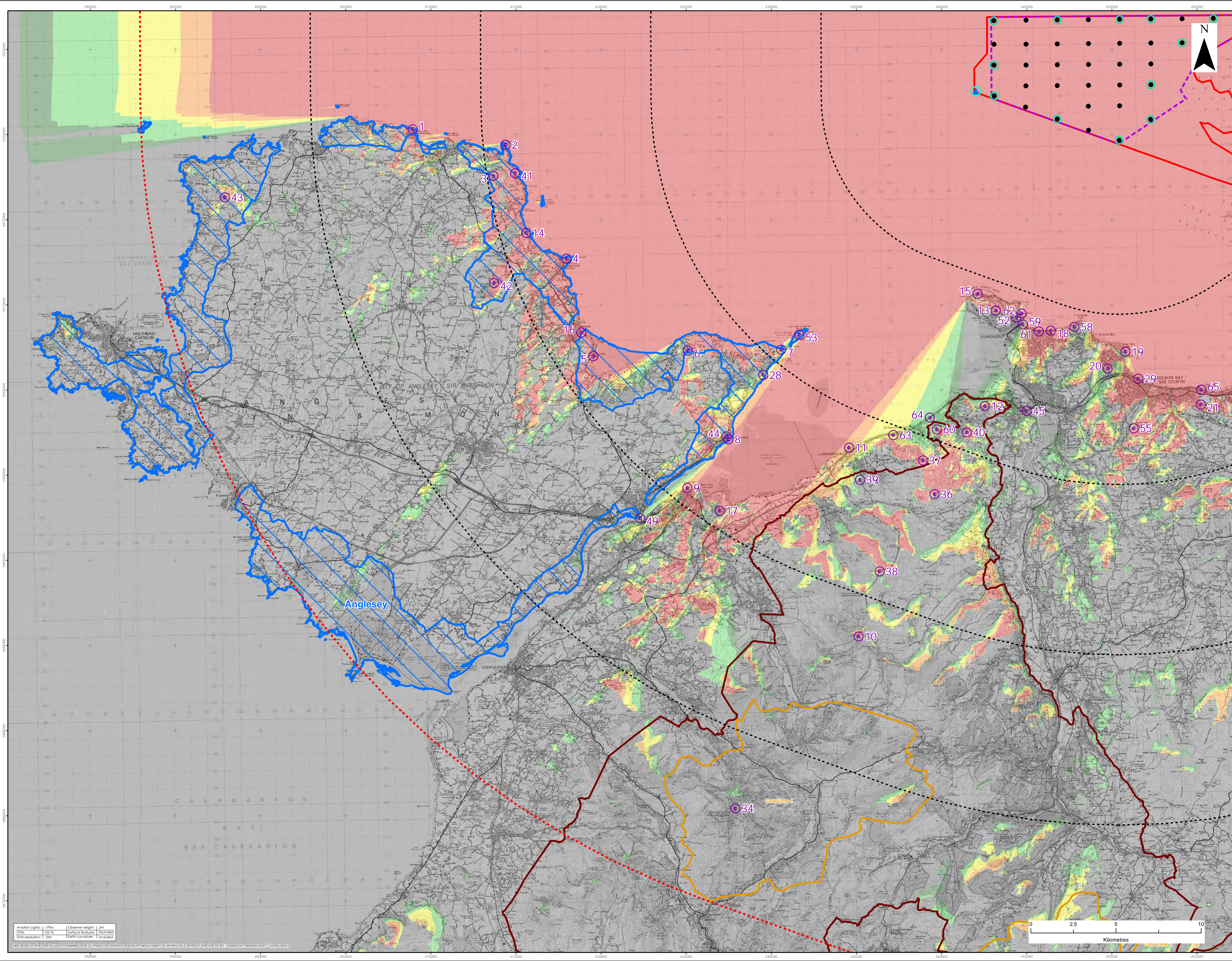
REVISION	DATE	STATUS/ REASON FOR ISSUE	AUTHOR:	CHECKED BY:	APPROVED BY:
A	April 2022	ES	OPEN	SLR/GoBe	RWE

www.awelymor.cymru

RWE Renewables UK
Swindon Limited

Windmill Hill Business Park
Whitehill Way
Swindon
Wiltshire SN5 6PB
T +44 (0)8456 720 090
www.rwe.com

Registered office:
RWE Renewables UK
Swindon Limited
Windmill Hill Business Park
Whitehill Way
Swindon



- LEGEND**
- Order Limits
 - Array Area
 - 10km Radial
 - 50km Study Area
 - Wind Turbine Generators (indicative locations)
 - Civil Aviation perimeter lighting (flashing/steady red, 2000/200 candela)
 - Marine navigation isolated structure lighting of met mast (flashing white, 10Nm nominal range)
 - Viewpoint Location
 - Snowdonia National Park
 - Snowdonia National Park Core Zone
 - Area of Outstanding Natural Beauty

ZTV (turbine hub height & met mast) assumed to be lit with aviation lights

No. of aviation lights theoretically

- 1 - 4
- 5 - 8
- 9 - 12
- 13 - 16
- 17 - 20

- Viewpoints**
1. Bull Bay near Amlwch - Wales Coast Path
 2. Point Lynas - PROW to north of lighthouse
 3. Mynydd Eilon - near trig point
 4. Moelfre Headland at sculpture
 5. Red Wharf Bay
 6. Bwrdd Arthur - north of trig point
 7. Penmon Point - north-east of parking
 8. Beaumaris - Wales Coast Path
 9. Bangor Pier (Southern End)
 10. Carnedd Llewelyn
 11. Llanfairfechan
 12. Conwy Mountain
 13. Great Orme - near summit complex
 14. Wales Coast Path near Penrhyon (Traeth yr Orla)
 15. Great Orme - Café
 16. Bontleach Bay View Road
 17. Penrhyon Castle terrace
 18. Llandudno paddling pool
 19. Rhos-on-Sea
 20. Bryn Eryrn
 21. Mynydd Marian
 22. Trwyn y Penrhyon parking layby
 23. Colwyn Bay promenade
 24. Snowdon summit
 25. Tal y Fan
 26. Cefn Coch Stone Circle
 27. Foel Fras
 28. North Wales Path at Garsag Fawr
 29. Above Capelula - North Wales Path
 30. Wales Coast Path north-east of Rhôs-mynach-fawr
 31. Mynydd Bodafon - Trig Point
 32. Mynydd y Garn
 33. Beaumaris Castle
 34. Conwy Castle - Chapel Tower
 35. Menai Suspension Bridge
 36. Pen-y-Dinas Camp at interpretation sign
 37. Puffin Island
 38. Footpath above Cilgwyn Mawr
 39. Little Orme at Trig Point
 40. Llandudno promenade - lifeboat slipway
 41. Foel Lus
 42. Llandudno Promenade near Venue Cymru
 43. Great Orme - Marine Drive, Wales Coast Path near Tall Booth
 44. A55 at Penmaenmawr
 45. A55 at Puffin Roundabout, Dwygyfylch
 46. A55 at jetty north of Penmaen Rhôs

Data Source:
Corona OS data © Crown copyright and database right (2021). © Crown copyright. All rights reserved. (2021). Ordnance Survey Licence 000034723. Contains public sector information licensed under the terms of the Open Government Licence v3.0.

PROJECT TITLE:
AWEL Y MÔR OFFSHORE WINDFARM

FIGURE TITLE:
Hub Height Aviation Lighting
ZTV (MDS A) - Western area

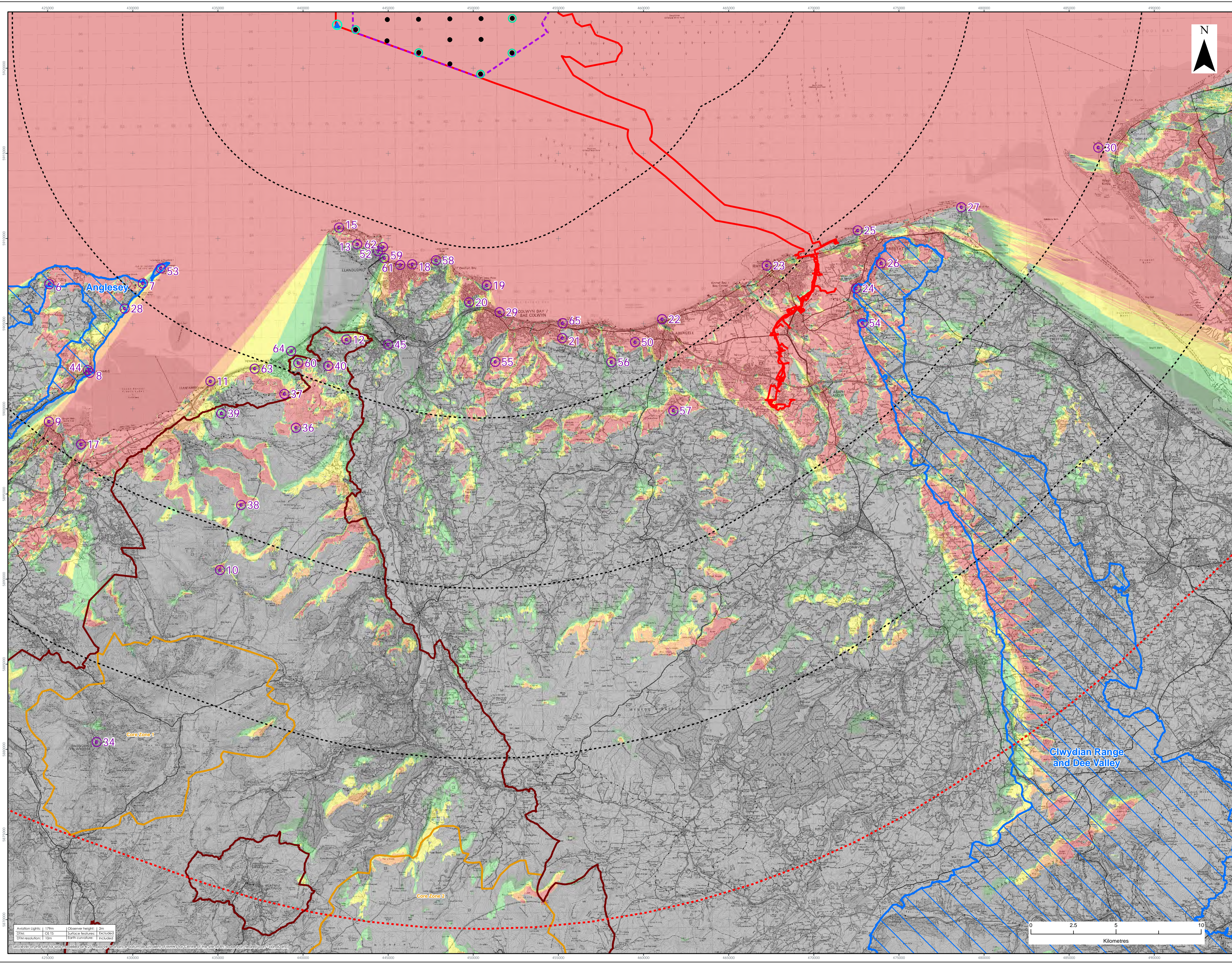
VER	DATE	REMARKS	Drawn	Checked
1	08/03/2022	For Issue	JM	LT

FIGURE NUMBER:
Figure 21a

SCALE:
1:100,000

PROJ. INFO:
PROJ. CODE: A1
DATUM: WGS84
PROJECTION: UTM30N

AWEL Y MÔR
Offshore Wind Farm



1 2

LEGEND

- Order Limits
- Array Area
- 10km Radial
- 50km Study Area
- Wind Turbine Generators (indicative locations)
- Civil Aviation perimeter lighting (flashing/steady red, 2000/200 candela)
- Marine navigation isolated structure lighting of met mast (flashing white, 10Nm nominal range)
- Viewpoint Location
- Snowdonia National Park
- Snowdonia National Park Core Zone
- Area of Outstanding Natural Beauty

ZTV (turbine hub height & met mast) assumed to be lit with aviation lights

No. of aviation lights theoretically

- 1 - 4
- 5 - 8
- 9 - 12
- 13 - 16
- 17 - 20

Viewpoints

- 6. Bwrdd Arthur - north of trig point
- 7. Penmon Point - north-east of parking
- 8. Beaumaris - Wales Coast Path
- 9. Bangor Pier (Southern End)
- 10. Carnedd Llewelyn
- 11. Llanfairfechan
- 12. Conwy Mountain
- 13. Great Orme - near summit complex
- 15. Great Orme - Café
- 17. Penrhyn Castle terrace
- 18. Llandudno paddling pool
- 19. Rhas-on-Sea
- 20. Bryn Erynn
- 21. Wynyddol Marian
- 22. Abergele promenade
- 24. Grosfawr
- 25. Prestatyn Nova Centre
- 26. Bryn-llyn Viewpoint (Prestatyn Hillside viewpoint, Gwaenysgar)
- 27. Point of Ayr
- 28. Trefyn-y-Penrhyn parking layby
- 29. Colwyn Bay promenade
- 30. Hilbre Point
- 34. Snowdon summit
- 36. Tal y Fan
- 37. Cefn Coch Stone Circle
- 38. Foel Fras
- 39. North Wales Path of Gwraig Fawr
- 40. Above Capelulo - North Wales Path
- 44. Beaumaris Castle
- 45. Conwy Castle - Chapel Tower
- 50. Gwynedd Castle - Terrace
- 52. Pen-y-Dinas Camp at interpretation sign
- 53. Puffin Island
- 54. y Foel (Common land and hill east of Dyserth)
- 55. Footpath above Clwydian Mawr
- 56. Pen-y-corddyn-mawr
- 57. Moelfre Isaf
- 58. Little Orme at Trig Point
- 59. Llandudno promenade - lifeboat slipway
- 60. Foel Lus
- 61. Llandudno Promenade near Venue Cymru
- 62. Great Orme - Marine Drive, Wales Coast Path near Tall Booth
- 63. A55 at Penmaenmawr
- 64. A55 at Puffin Roundabout, Dwygyfylch
- 65. A55 at jetty north of Penmaen Rhôs

Data Source:
Contains OS data © Crown copyright and database right (2021). © Crown copyright.
All rights reserved. (2021) Ordnance Survey Licence 010031473. Contains public sector information licensed under the terms of the Open Government Licence v3.0.

PROJECT TITLE:
AWEL Y MÔR OFFSHORE WINDFARM

FIGURE TITLE:
**Hub Height Aviation Lighting
ZTV (MDS A) - Central area**

VER	DATE	REMARKS	Drawn	Checked
1	08/03/2022	For Issue	JM	LT

FIGURE NUMBER:
Figure 21b

SCALE: 1:100,000 PLOT SIZE: A1 DATUM: WGS84 PROJECTION: UTM30N

AWEL Y MÔR
Offshore Wind Farm



RWE Renewables UK
Swindon Limited

Windmill Hill Business Park
Whitehill Way
Swindon
Wiltshire SN5 6PB
T +44 (0)8456 720 090
www.rwe.com

Registered office:
RWE Renewables UK
Swindon Limited
Windmill Hill Business Park
Whitehill Way
Swindon