



Awel y Môr Offshore Wind Farm

Category 6: Environmental Statement

**Volume 6, Annex 10.4: SLVIA
Figures - Figure 22a-b (Hub
Height Aviation Lighting ZTV
(MDS B))**

Date: April 2022

Revision: A

Application Reference: 6.6.10.4.35

Pursuant to: APFP Regulation 5(2)(a)



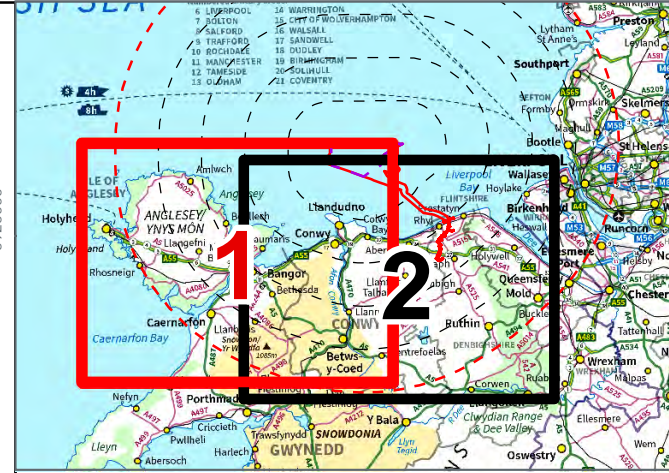
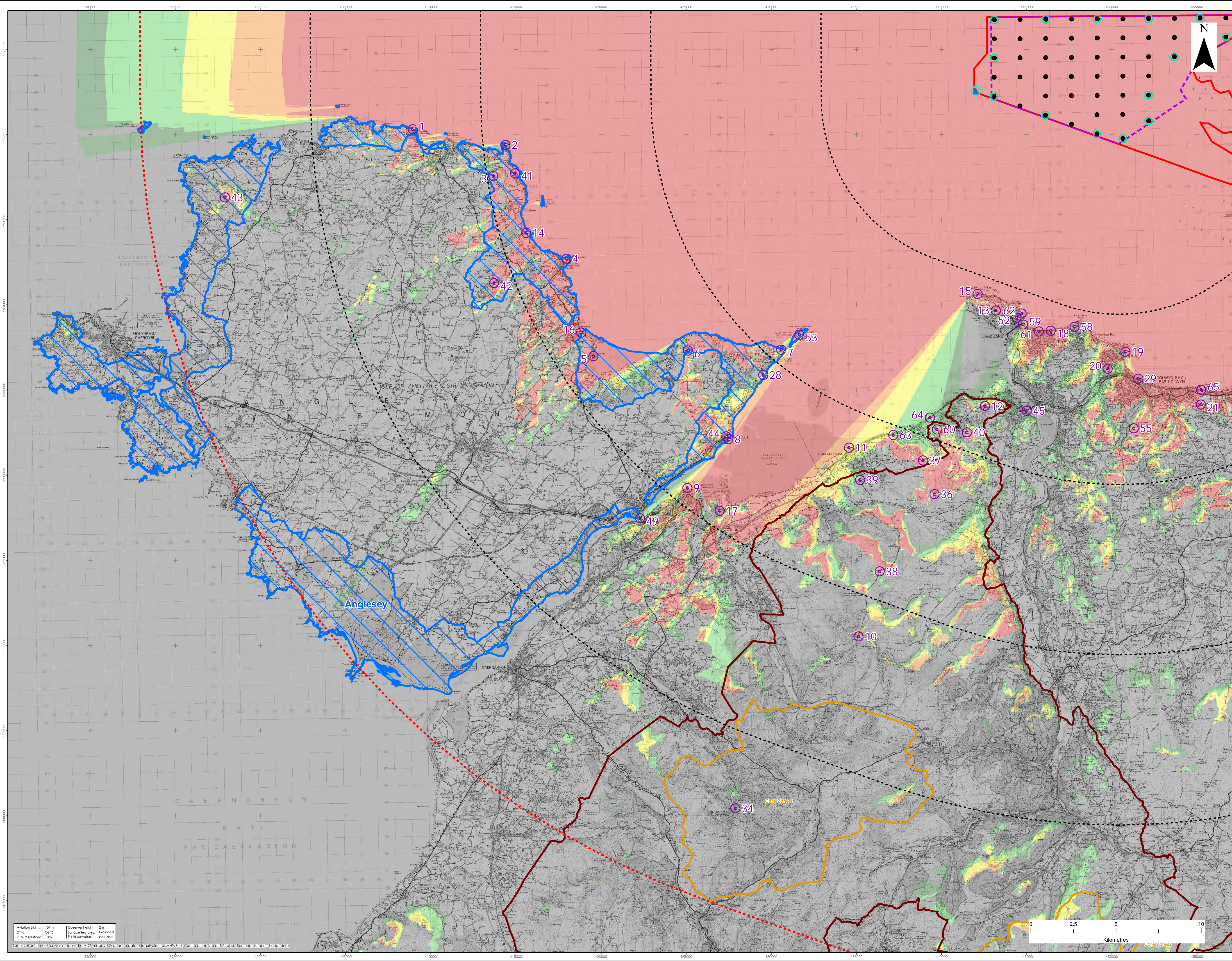
REVISION	DATE	STATUS/ REASON FOR ISSUE	AUTHOR:	CHECKED BY:	APPROVED BY:
A	April 2022	ES	OPEN	SLR/GoBe	RWE

www.awelymor.cymru

RWE Renewables UK
Swindon Limited

Windmill Hill Business Park
Whitehill Way
Swindon
Wiltshire SN5 6PB
T +44 (0)8456 720 090
www.rwe.com

Registered office:
RWE Renewables UK
Swindon Limited
Windmill Hill Business Park
Whitehill Way
Swindon



- LEGEND
- Order Limits
 - Array Area
 - 10km Radii
 - 50km Study Area

- Wind Turbine Generators (indicative locations)
- Civil Aviation perimeter lighting (flashing/steady red, 2000/200 candela)
- Marine navigation isolated structure lighting of met mast (flashing white, 10Nm nominal range)
- Viewpoint Location
- Snowdonia National Park
- Snowdonia National Park Core Zone
- Area of Outstanding Natural Beauty

ZTV (turbine hub height & met mast) assumed to be lit with aviation lights

No. of aviation lights theoretically

- 1 - 6
- 7 - 12
- 13 - 17
- 18 - 22
- 23 - 27

- Viewpoints
1. Bull Bay near Amlwch - Wales Coast Path
 2. Point Lynas - PROW to north of lighthouse
 3. Mynydd Eilan - near trig point
 4. Moelfre Headland at sculpture
 5. Red Wharf Bay
 6. Bwrdd Arthur - north of trig point
 7. Penmon Point - north-east of parking
 8. Beaumaris - Wales Coast Path
 9. Bangor Pier (Southern End)
 10. Carnedd Llewelyn
 11. Llanfairfechan
 12. Conwy Mountain
 13. Great Orme - near summit complex
 14. Wales Coast Path near Penrhyon (Traeth yr Ora)
 15. Great Orme - Café
 16. Benllech Bay View Road
 17. Penrhyon Castle terrace
 18. Llandudno paddling pool
 19. Rhos-on-Sea
 20. Bryn Eryr
 21. Mynydd Marian
 22. Trwyn y Penrhyon parking layby
 23. Colwyn Bay promenade
 24. Snowdon summit
 25. Tal y Fan
 26. Cefn Coch Stone Circle
 27. Foel Fras
 28. North Wales Path at Garreg Fawr
 29. Above Capellic - North Wales Path
 30. Wales Coast Path north-east of Rhôs-mynach-fawr
 31. Mynydd Bodafon - Trig Point
 32. Mynydd y Garn
 33. Beaumaris Castle
 34. Conwy Castle - Chapel Tower
 35. Menai Suspension Bridge
 36. Pen-y-Dinas Camp at interpretation sign
 37. Puffin Island
 38. Footpath above Cilgwyn Mawr
 39. Little Orme at Trig Point
 40. Llandudno promenade - lifeboat slipway
 41. Foel Lus
 42. Llandudno Promenade near Venue Cymru
 43. Great Orme - Marine Drive, Wales Coast Path near Toll Booth
 44. A55 at Penmaenmawr
 45. A55 at Puffin Roundabout, Dwygyfylch
 46. A55 at jetty north of Penmaen Rhôs

Data Source:
Corona OS data © Crown copyright and database right (2021). © Crown copyright.
All rights reserved. (2021). Ordnance Survey Licence 010031473. Contains public sector information licensed under the terms of the Open Government Licence v3.0.

PROJECT TITLE:
AWEL Y MŌR OFFSHORE WINDFARM

FIGURE TITLE:
**Hub Height Aviation Lighting
ZTV (MDS B) - Western area**

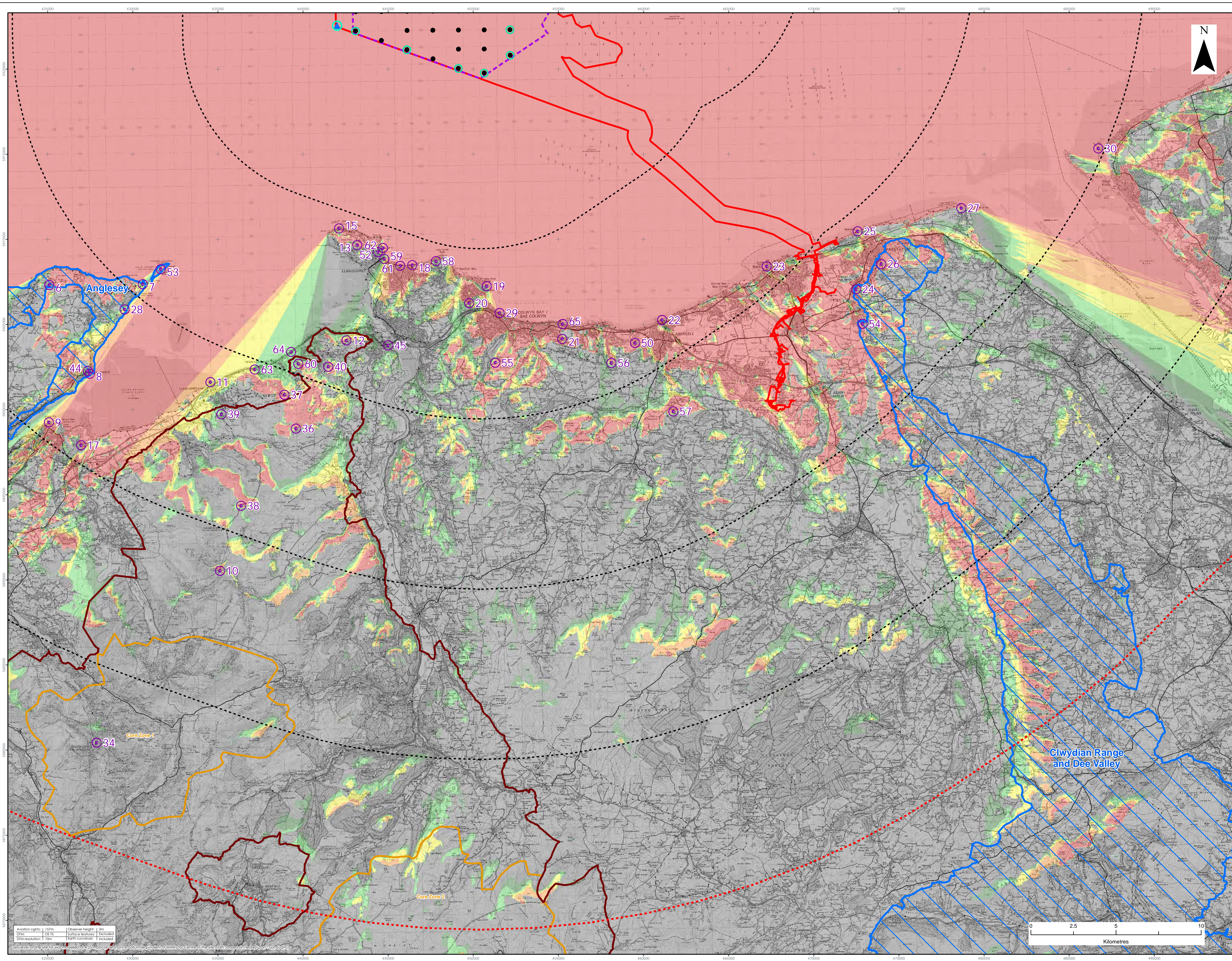
VER	DATE	REMARKS	Drawn	Checked
1	08/03/2022	For Issue	JM	LT

FIGURE NUMBER:
Figure 22a

SCALE: 1:100,000
PROJ: A1
DATUM: WGS84
PROJECTION: UTM30N



Aviation Lights: 157m
Observer height: 3m
Date: 08/03/2022
DTM resolution: 10m
Earth curvature: 1 included
Sea level on the site for was modeled at 12.25 metres Ordnance datum (equivalent of MHWS for centre of the site at 8.1 based on nearest port - Llandudno)



LEGEND

- Order Limits
- Array Area
- 10km Radial
- 50km Study Area
- Wind Turbine Generators (indicative locations)
- Civil Aviation perimeter lighting (flashing/steady red, 2000/200 candela)
- Marine navigation isolated structure lighting of met mast (flashing white, 10Nm nominal range)
- Viewpoint Location
- Snowdonia National Park
- Snowdonia National Park Core Zone
- Area of Outstanding Natural Beauty

ZTV (turbine hub height & met mast) assumed to be lit with aviation lights

No. of aviation lights theoretically

- 1 - 6
- 7 - 12
- 13 - 17
- 18 - 22
- 23 - 27

Viewpoints

6. Bwrdd Arthur - north of trig point
7. Penmon Point - north-east of parking
8. Beaumaris - Wales Coast Path
9. Bangor Pier (Southern End)
10. Carnedd Llewelyn
11. Llanfairfechan
12. Conwy Mountain
13. Great Orme - near summit complex
15. Great Orme - Café
17. Penrhyn Castle terrace
18. Llandudno paddling pool
19. Rhas-on-Sea
20. Bryn Erynn
21. Wynydd Marian
22. Abergele promenade
23. Rhyi Aquarium
24. Great Fawr
25. Prestatyn Nova Centre
26. Bryn-llyn Viewpoint (Prestatyn Hillside viewpoint, Gwaenysgar)
27. Point of Ayl
28. Tŷn y Penrhyn parking layby
29. Colwyn Bay promenade
30. Hilbre Point
34. Snowdon summit
36. Tal y Fan
37. Cefn Coch Stone Circle
38. Foel Fras
39. North Wales Path at Gorse Fawr
40. Above Capelulo - North Wales Path
44. Beaumaris Castle
45. Conwy Castle - Chapel Tower
50. Gwynedd Castle - Terrace
52. Pen-y-Dinas Camp at interpretation sign
53. Puffin Island
54. y Foel (Common land and hill east of Dyserth)
55. Footpath above Clwydian Mawr
56. Pen-y-corddyn-mawr
57. Moelfre Isaf
58. Little Orme at Trig Point
59. Llandudno promenade - lifeboat slipway
60. Foel Lus
61. Llandudno Promenade near Venue Cymru
62. Great Orme - Marina Drive, Wales Coast Path near Toll Booth
63. A55 at Penmaenmawr
64. A55 at Puffin Roundabout, Dwygyfylch
65. A55 at jetty north of Penmaen Rhôs

Data Source:
Contains OS data © Crown copyright and database right (2021). © Crown copyright.
All rights reserved. (2021) Ordnance Survey Licence 010031473. Contains public sector information licensed under the terms of the Open Government Licence v3.0.

PROJECT TITLE:
AWEL Y MÔR OFFSHORE WINDFARM

FIGURE TITLE:
**Hub Height Aviation Lighting
ZTV (MDS B) - Central area**

VER	DATE	REMARKS	Drawn	Checked
1	08/03/2022	For Issue	JM	LT

FIGURE NUMBER:
Figure 22b

SCALE: 1:100,000 PROF: A1 DATUM: WGS84 PROJECTION: UTM30N

Offshore Wind Farm



RWE Renewables UK
Swindon Limited

Windmill Hill Business Park
Whitehill Way
Swindon
Wiltshire SN5 6PB
T +44 (0)8456 720 090
www.rwe.com

Registered office:
RWE Renewables UK
Swindon Limited
Windmill Hill Business Park
Whitehill Way
Swindon