



Awel y Môr Offshore Wind Farm

Category 6: Environmental Statement

Volume 6, Annex 10.5: SLVIA Visualisations - Figure 60 (ViewPoint 33 - Southport (pier))

Date: April 2022

Revision: A

Application Reference: 6.6.10.5.33

Pursuant to: APFP Regulation 5(2)(a)



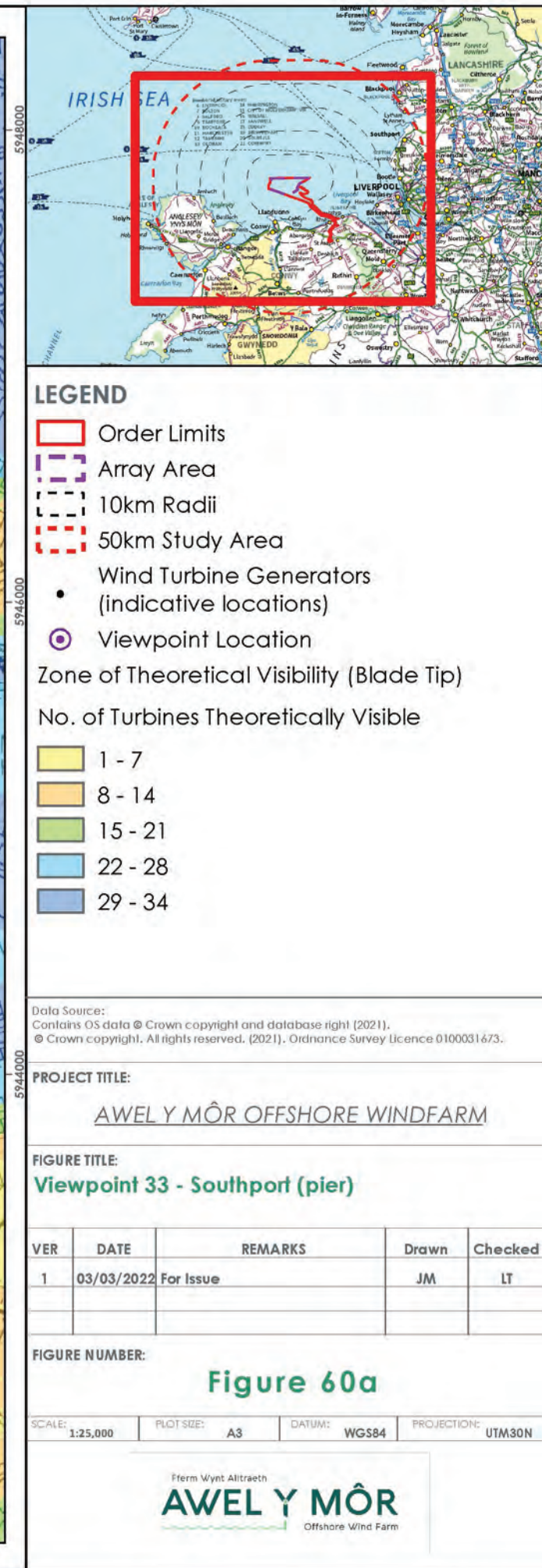
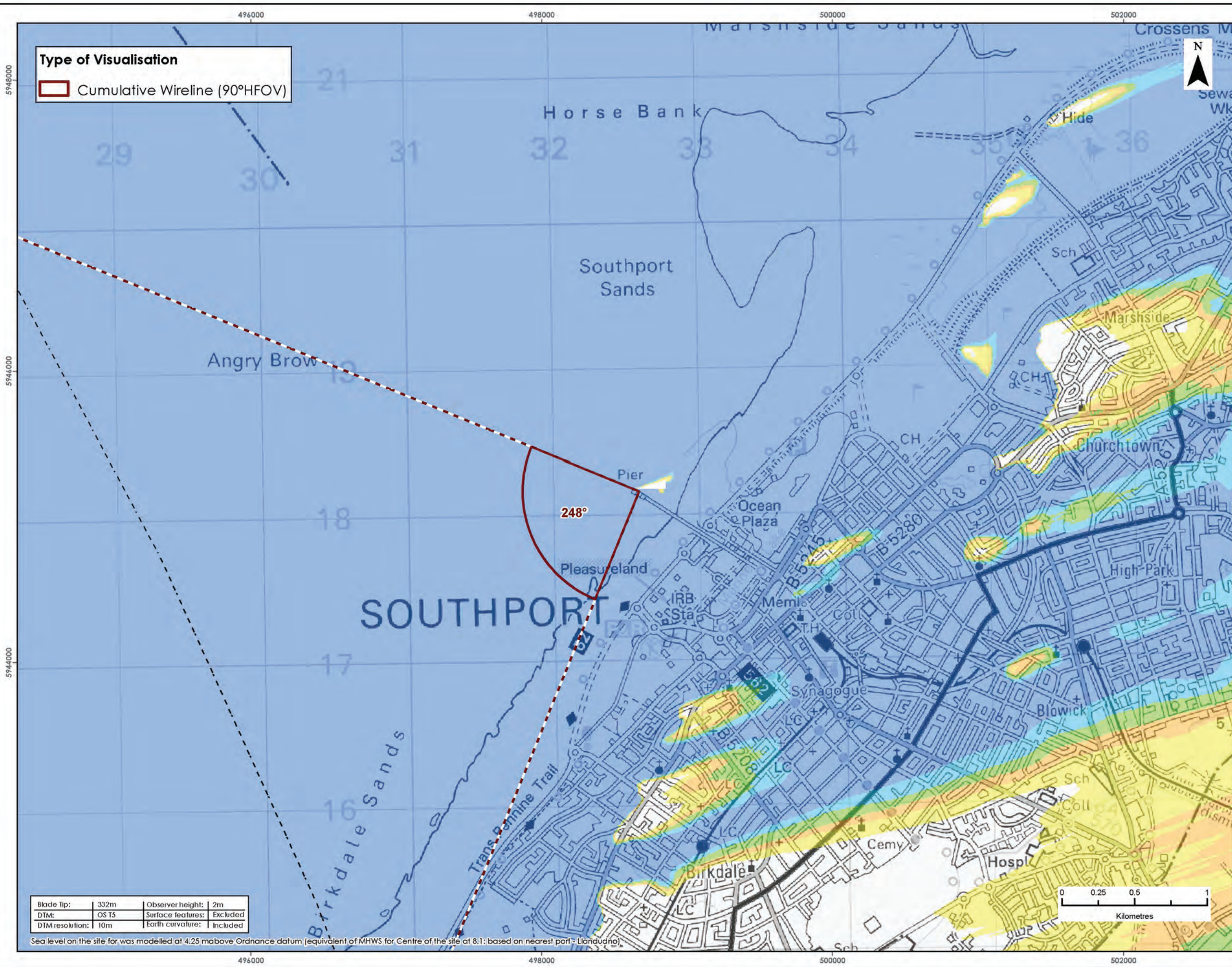
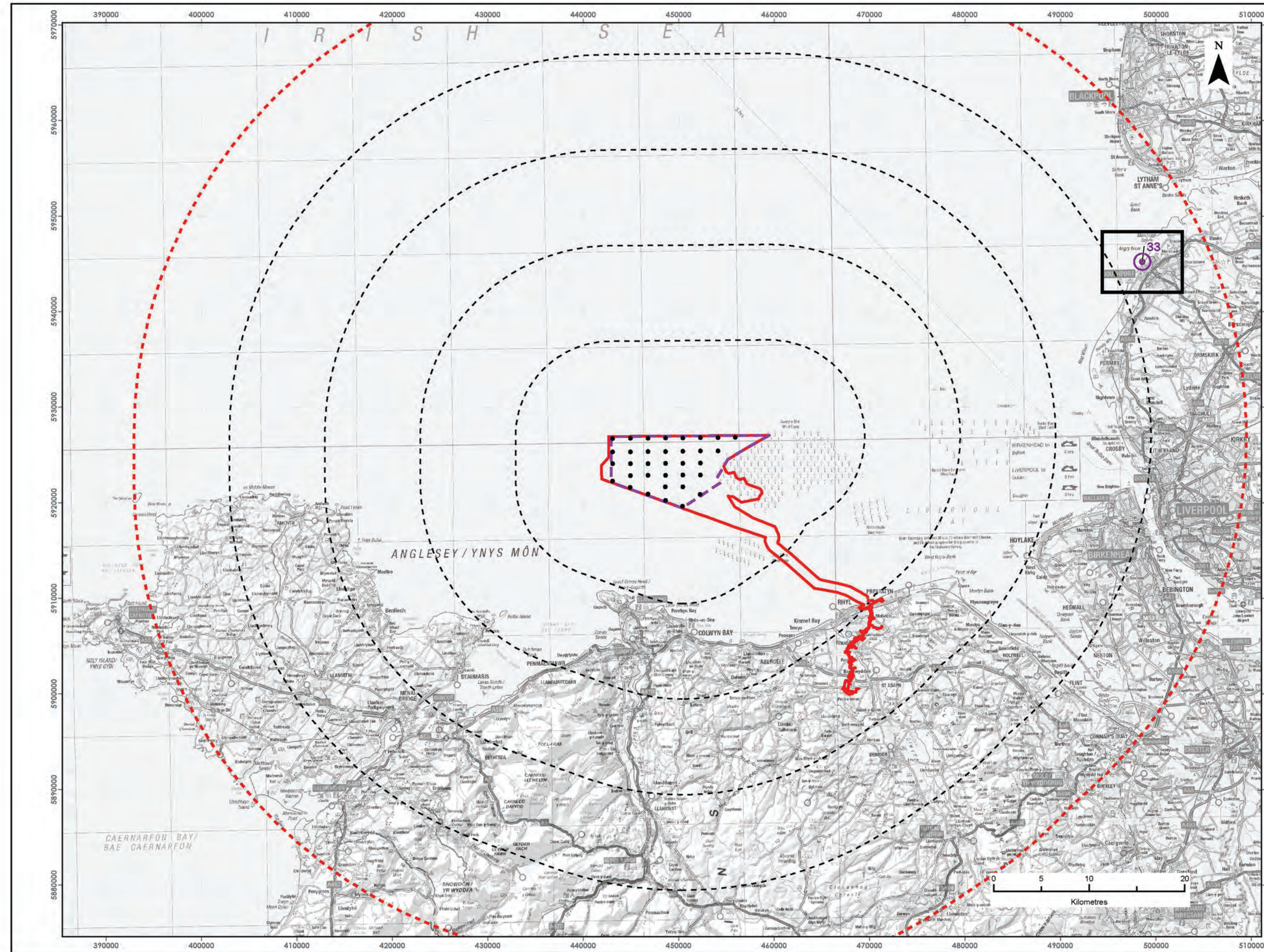
| REVISION | DATE | STATUS/ REASON FOR ISSUE | AUTHOR: | CHECKED BY: | APPROVED BY: |
|----------|---------------|--------------------------------|---------|----------------|-----------------|
| A | April 2022 | ES | OPEN | SLR/GoBe | RWE |
| | | | | | |
| | | | | | |
| | | | | | |

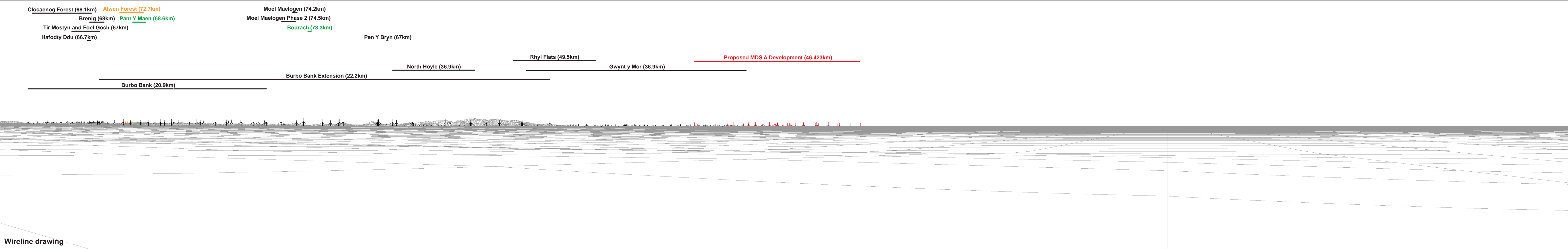
www.awelymor.cymru

RWE Renewables UK
Swindon Limited

Windmill Hill Business Park
Whitehill Way
Swindon
Wiltshire SN5 6PB
T +44 (0)8456 720 090
www.rwe.com

Registered office:
RWE Renewables UK
Swindon Limited
Windmill Hill Business Park
Whitehill Way
Swindon







RWE Renewables UK
Swindon Limited

Windmill Hill Business Park
Whitehill Way
Swindon
Wiltshire SN5 6PB
T +44 (0)8456 720 090
www.rwe.com

Registered office:
RWE Renewables UK
Swindon Limited
Windmill Hill Business Park
Whitehill Way
Swindon