



Awel y Môr Offshore Wind Farm

Category 6: Environmental Statement

Volume 6, Annex 10.5: SLVIA Visualisations - Figure 38 (ViewPoint 11 - Llanfairfechan)

Date: April 2022

Revision: A

Application Reference: 6.6.10.11

Pursuant to: APFP Regulation 5(2)(a)



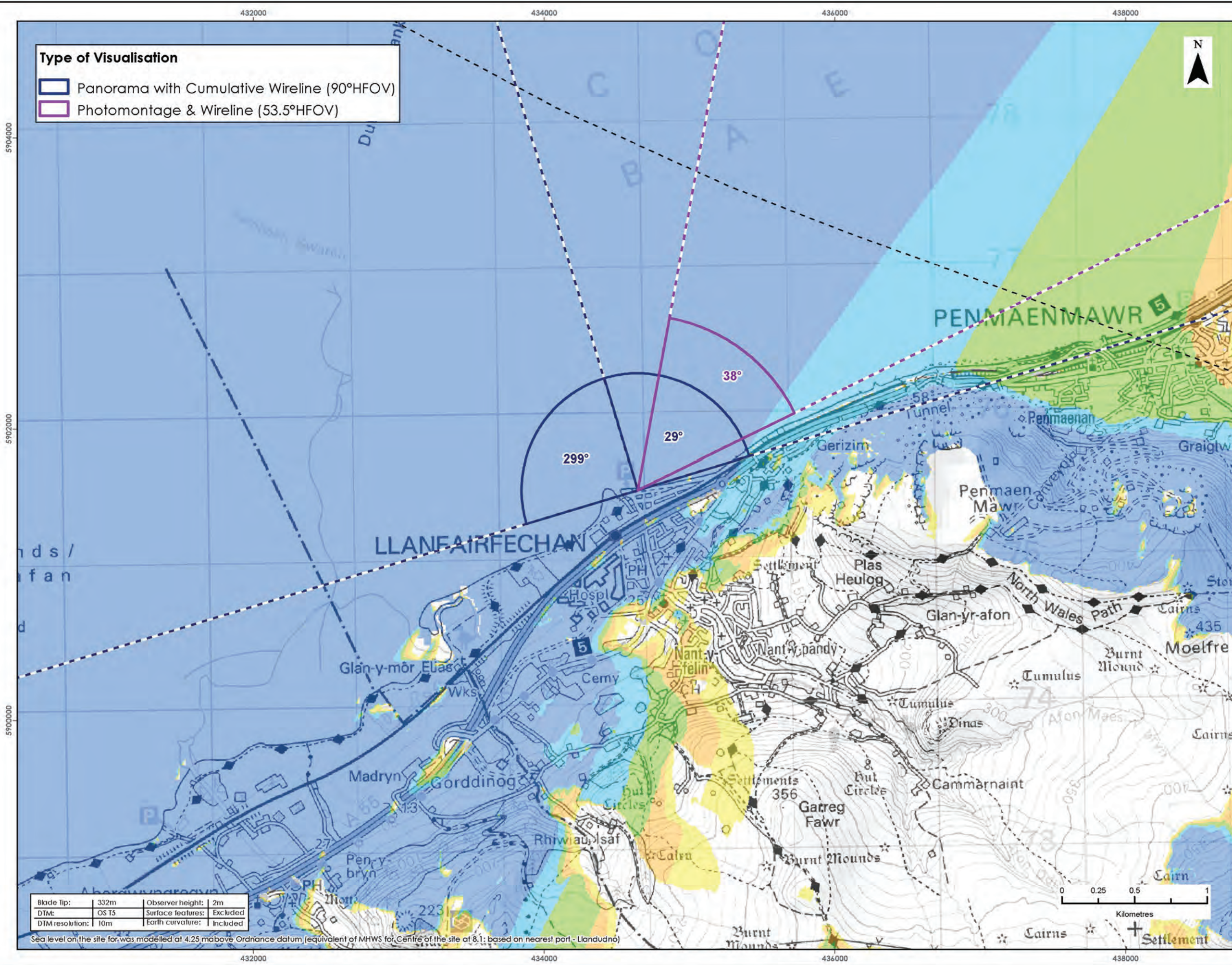
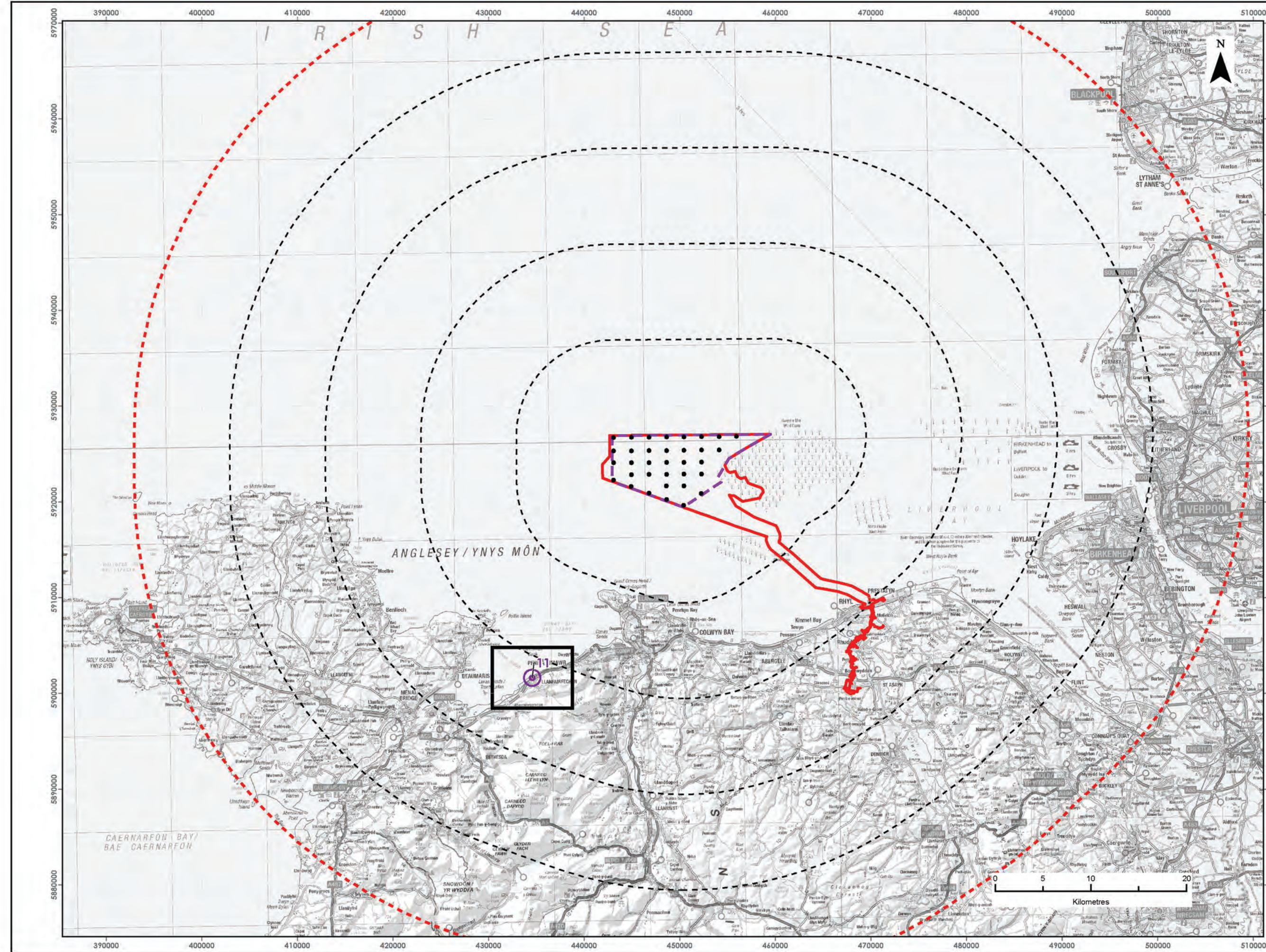
| REVISION | DATE | STATUS/ REASON FOR ISSUE | AUTHOR: | CHECKED BY: | APPROVED BY: |
|----------|---------------|--------------------------------|---------|----------------|-----------------|
| A | April 2022 | ES | OPEN | SLR/GoBe | RWE |
| | | | | | |
| | | | | | |
| | | | | | |

www.awelymor.cymru

RWE Renewables UK
Swindon Limited

Windmill Hill Business Park
Whitehill Way
Swindon
Wiltshire SN5 6PB
T +44 (0)8456 720 090
www.rwe.com

Registered office:
RWE Renewables UK
Swindon Limited
Windmill Hill Business Park
Whitehill Way
Swindon



LEGEND

- Order Limits
- Array Area
- 10km Radii
- 50km Study Area
- Wind Turbine Generators (indicative locations)
- Viewpoint Location
- Zone of Theoretical Visibility (Blade Tip)
- No. of Turbines Theoretically Visible

| |
|---------|
| 1 - 7 |
| 8 - 14 |
| 15 - 21 |
| 22 - 28 |
| 29 - 34 |

Data Sources:
Contains OS data © Crown copyright and database right (2021).
© Crown copyright. All rights reserved. (2021). Ordnance Survey Licence 0100031673.

PROJECT TITLE:
AWEL Y MÔR OFFSHORE WINDFARM

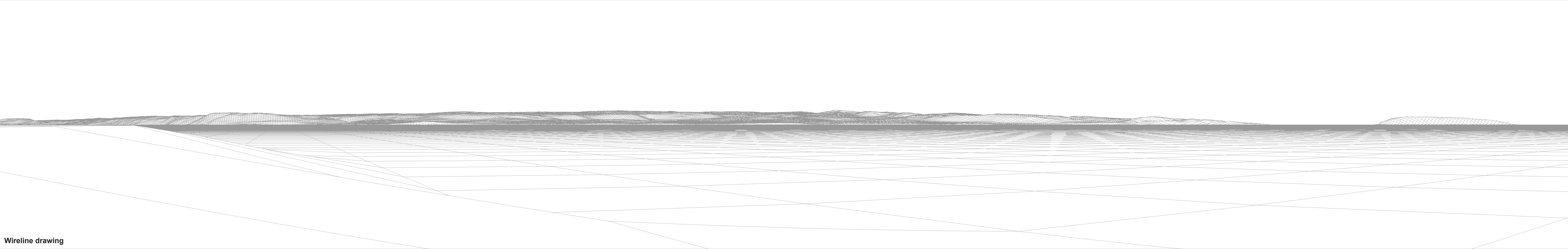
FIGURE TITLE:
Viewpoint 11 - Llanfairfechan

| VER | DATE | REMARKS | Drawn | Checked |
|-----|------------|-----------|-------|---------|
| 1 | 03/03/2022 | For Issue | JM | LT |

FIGURE NUMBER:
Figure 38a

SCALE: 1:25,000 | PLOT SIZE: A3 | DATUM: WGS84 | PROJECTION: UTM30N

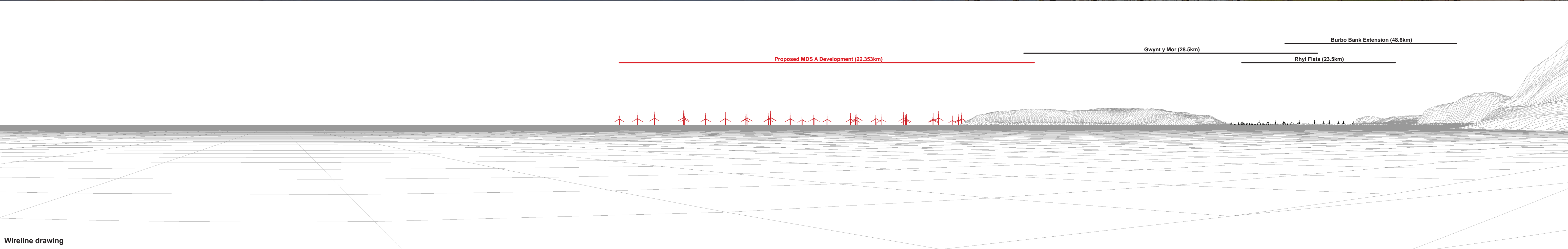
From Wynt Alltairth
AWEL Y MÔR
Offshore Wind Farm



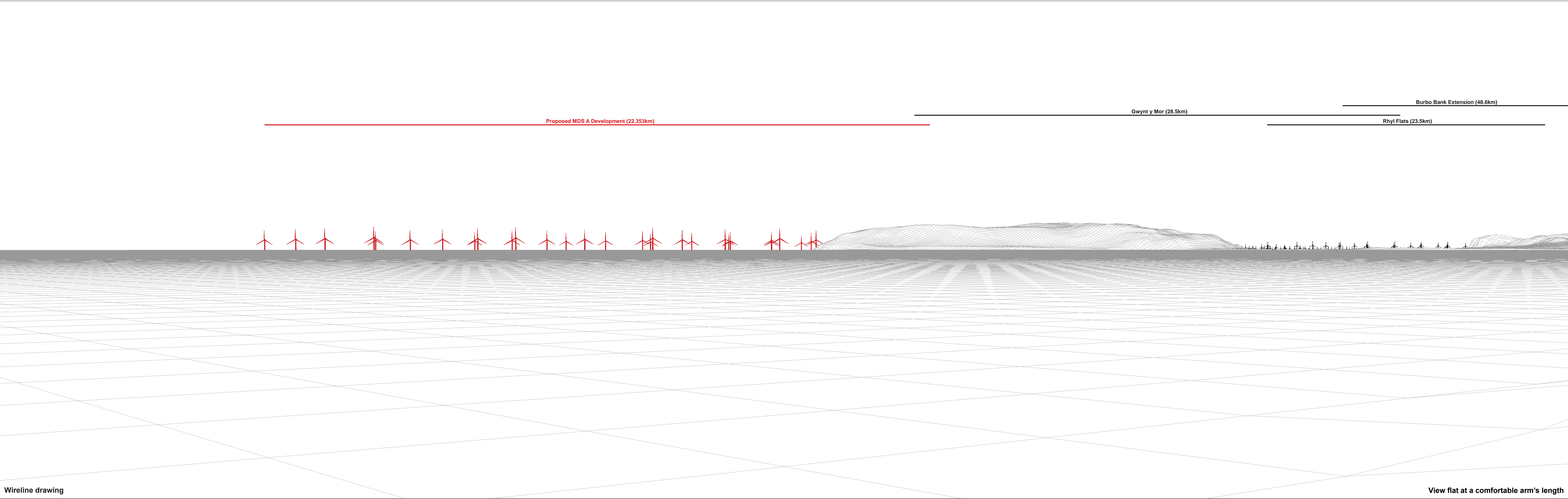


Baseline photograph

This image provides landscape and visual context only



Wireline drawing



Wireline drawing

View flat at a comfortable arm's length



Photomontage: Proposed MDS A Development

View flat at a comfortable arm's length

| | | | | | | |
|---------------------------|-------------------|------------------------------------|---------------------------|-----------------------|---------------------|--|
| OS reference: | 267955 E 375468 N | Horizontal field of view: | 53.5° (planar projection) | Camera: | Canon EOS 6D | Figure: 38e Viewpoint 11: Llanfairfechan Awel y Môr Offshore Wind Farm <small>© Crown copyright. All rights reserved (2021). Licence number 0100031673</small> |
| Eye level: | 5.7 mAOD | Principal distance: | 812.5 mm | Lens: | Canon EF 50mm f/1.4 | |
| Direction of view: | 38° | Paper size: | 841 x 297 mm (half A1) | Camera height: | 1.5 m | |
| Nearest turbine: | 22.353 km | Correct printed image size: | 820 x 260 mm | Date and time: | 11.05.2021 17:43 | |



RWE Renewables UK
Swindon Limited

Windmill Hill Business Park
Whitehill Way
Swindon
Wiltshire SN5 6PB
T +44 (0)8456 720 090
www.rwe.com

Registered office:
RWE Renewables UK
Swindon Limited
Windmill Hill Business Park
Whitehill Way
Swindon