



Awel y Môr Offshore Wind Farm

Category 6: Environmental Statement

Volume 6, Annex 10.5: SLVIA Visualisations - Figure 39 (ViewPoint 12 - Conwy Mountain)

Date: April 2022

Revision: A

Application Reference: 6.6.10.5.12

Pursuant to: APFP Regulation 5(2)(a)



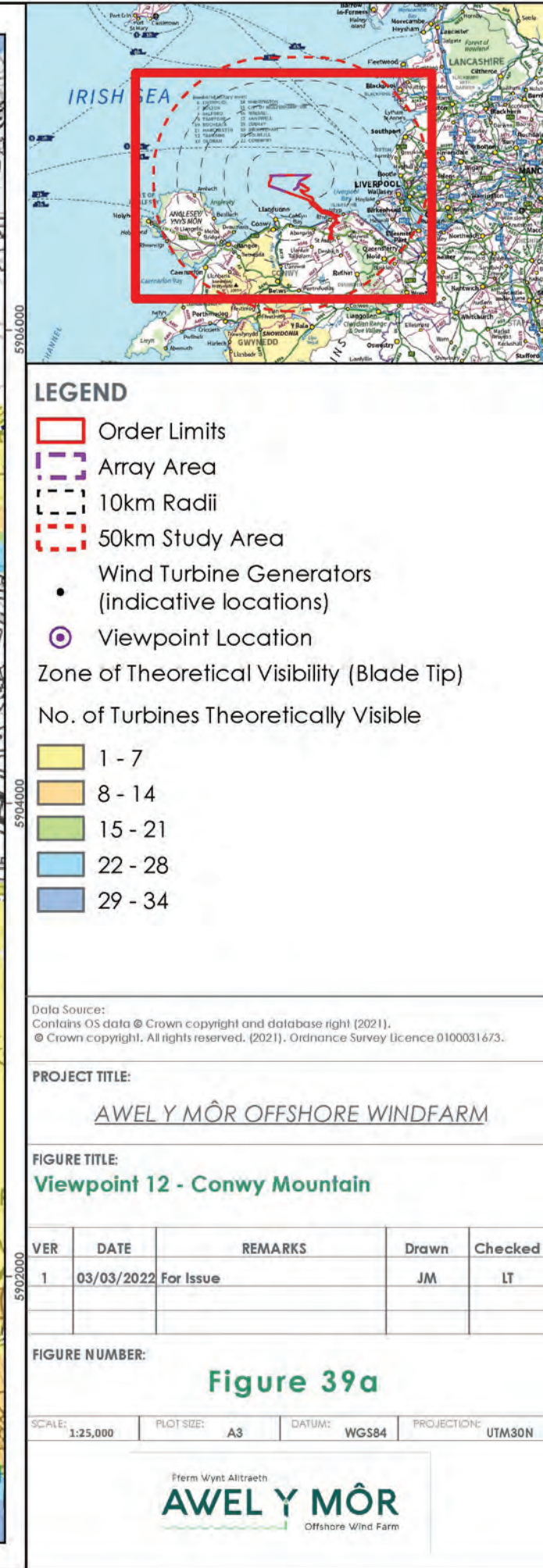
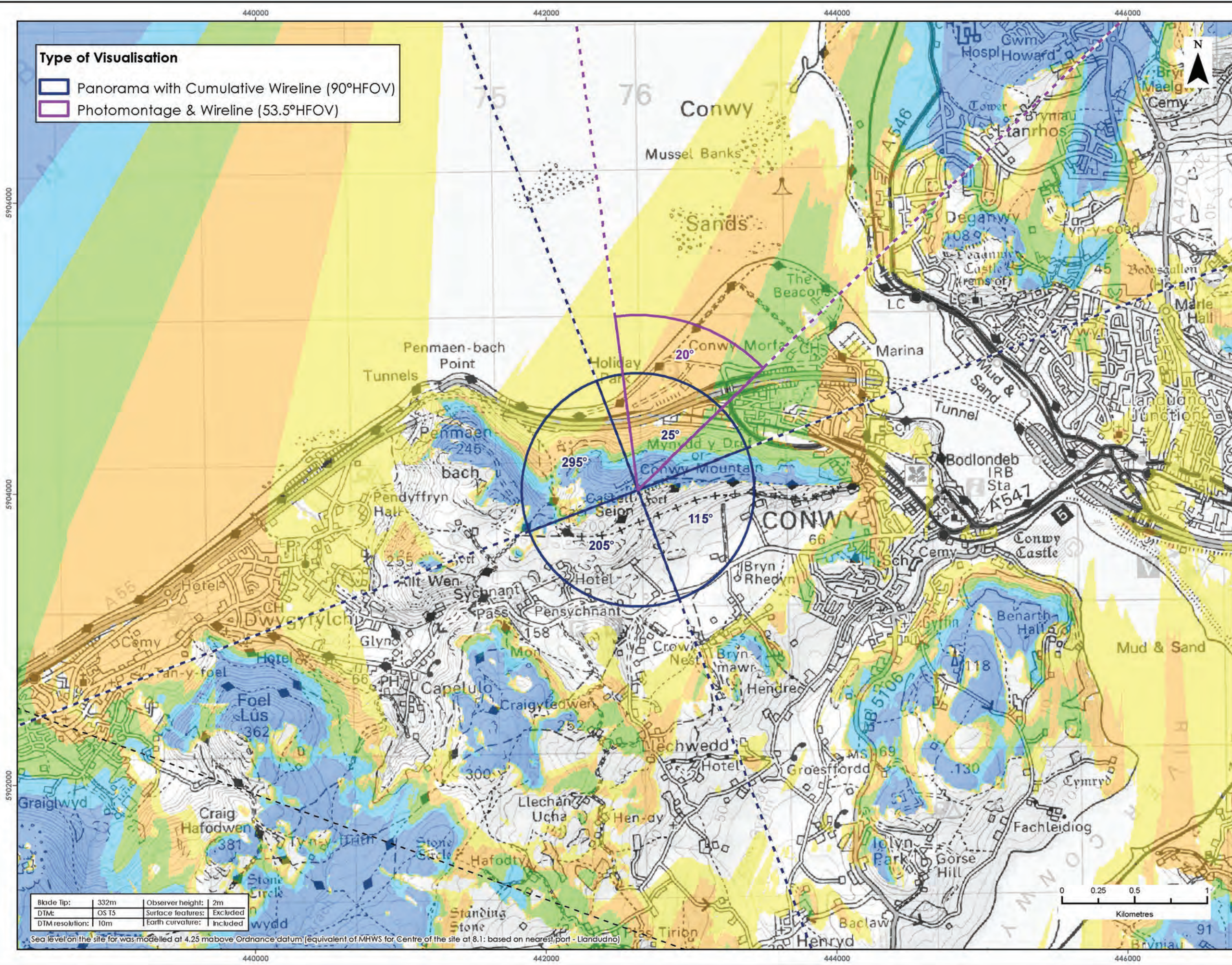
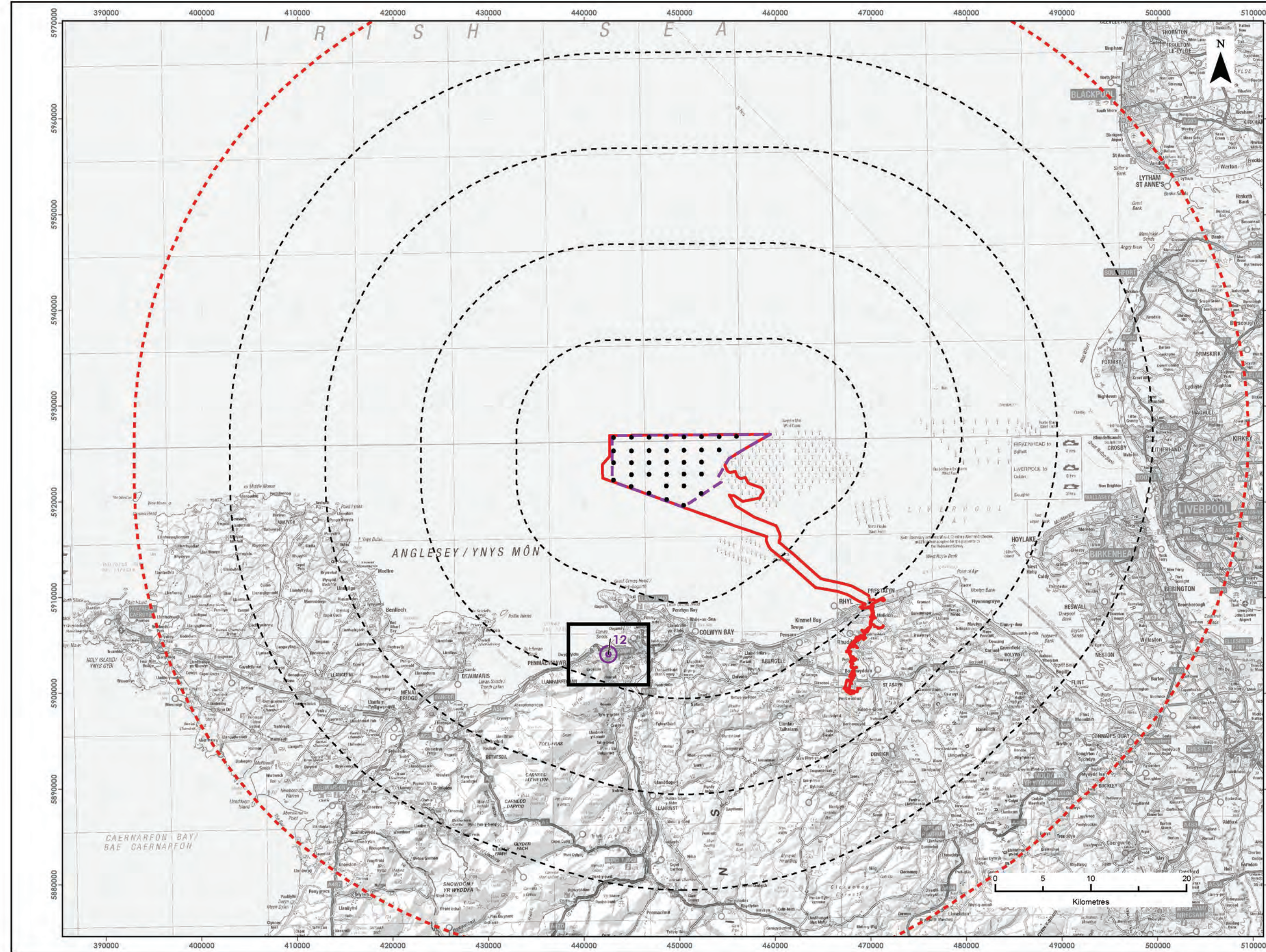
REVISION	DATE	STATUS/ REASON FOR ISSUE	AUTHOR:	CHECKED BY:	APPROVED BY:
A	April 2022	ES	OPEN	SLR/GoBe	RWE

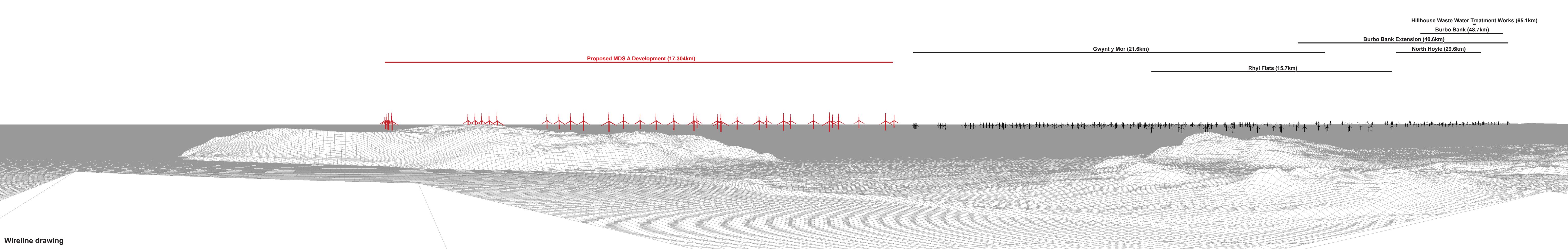
www.awelymor.cymru

RWE Renewables UK
Swindon Limited

Windmill Hill Business Park
Whitehill Way
Swindon
Wiltshire SN5 6PB
T +44 (0)8456 720 090
www.rwe.com

Registered office:
RWE Renewables UK
Swindon Limited
Windmill Hill Business Park
Whitehill Way
Swindon

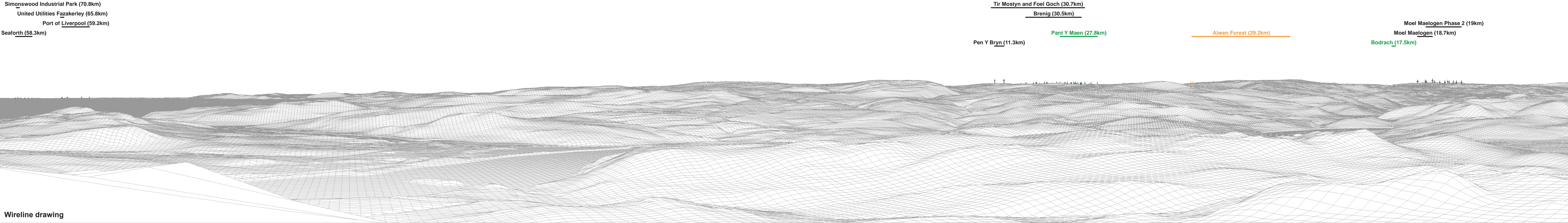






Baseline photograph

This image provides landscape and visual context only

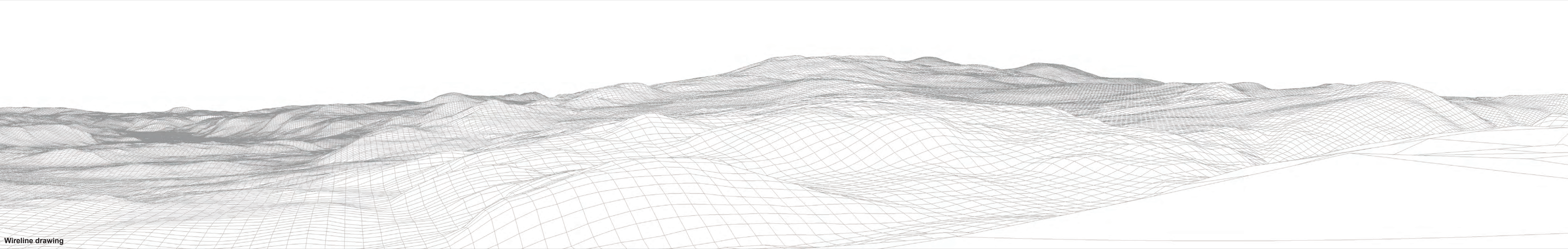


Wireline drawing



Baseline photograph

This image provides landscape and visual context only

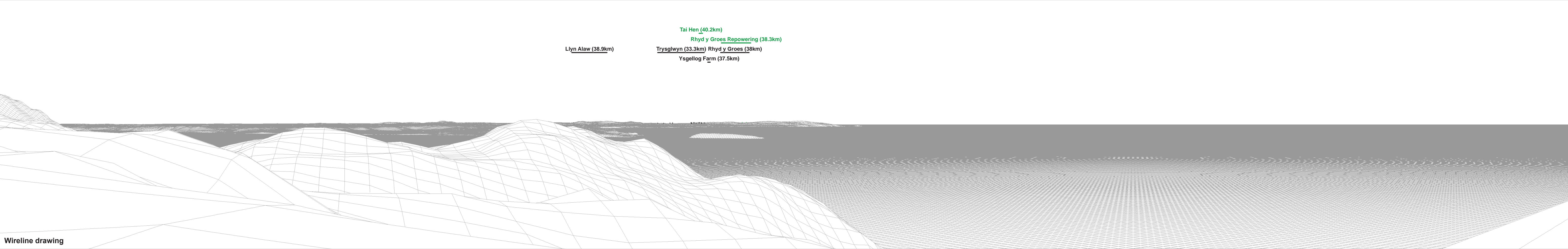


Wireline drawing

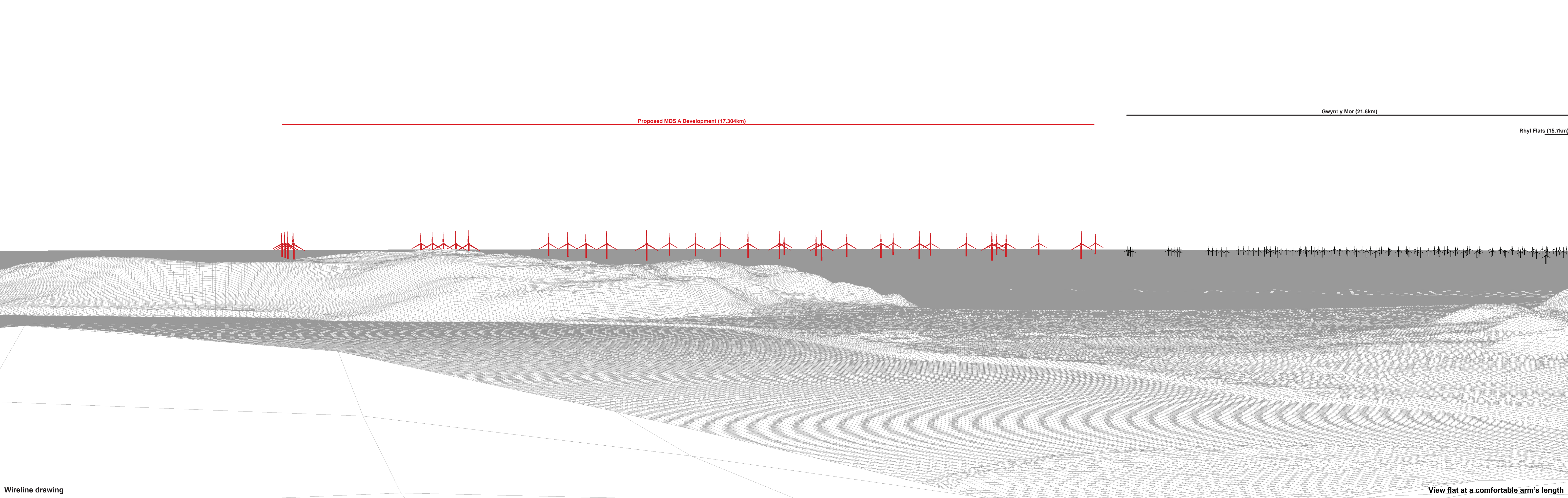


Baseline photograph

This image provides landscape and visual context only



Wireline drawing

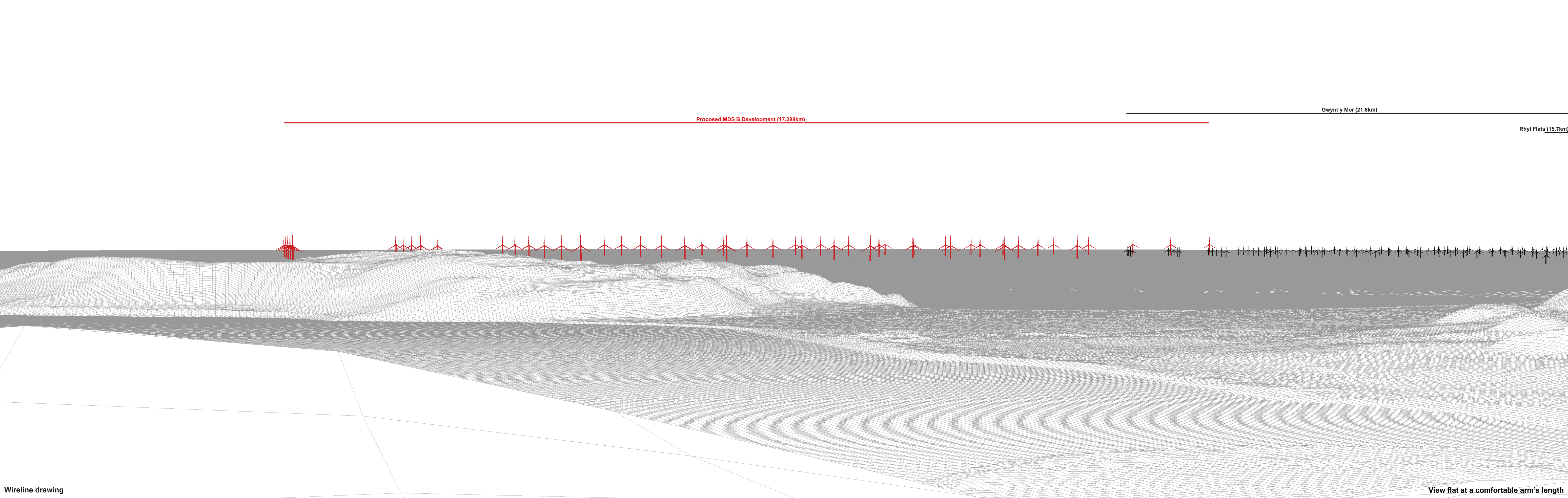




Photomontage: Proposed MDS A Development

View flat at a comfortable arm's length

OS reference:	275976 E 377803 N	Horizontal field of view:	53.5° (planar projection)	Camera:	Canon EOS 6D	Figure: 39g
Eye level:	245.3 mAOD	Principal distance:	812.5 mm	Lens:	Canon EF 50mm f/1.4	Viewpoint 12: Conwy Mountain
Direction of view:	20°	Paper size:	841 x 297 mm (half A1)	Camera height:	1.5 m	Awel y Môr Offshore Wind Farm
Nearest turbine:	17.304 km	Correct printed image size:	820 x 260 mm	Date and time:	30.03.2021 14:30	© Crown copyright. All rights reserved (2021). Licence number 0100031673







RWE Renewables UK
Swindon Limited

Windmill Hill Business Park
Whitehill Way
Swindon
Wiltshire SN5 6PB
T +44 (0)8456 720 090
www.rwe.com

Registered office:
RWE Renewables UK
Swindon Limited
Windmill Hill Business Park
Whitehill Way
Swindon