



Awel y Môr Offshore Wind Farm

Category 6: Environmental Statement

Volume 6, Annex 10.5: SLVIA Visualisations - Figure 51 (ViewPoint 24 - Graig Fawr)

Date: April 2022

Revision: A

Application Reference: 6.6.10.5.24

Pursuant to: APFP Regulation 5(2)(a)



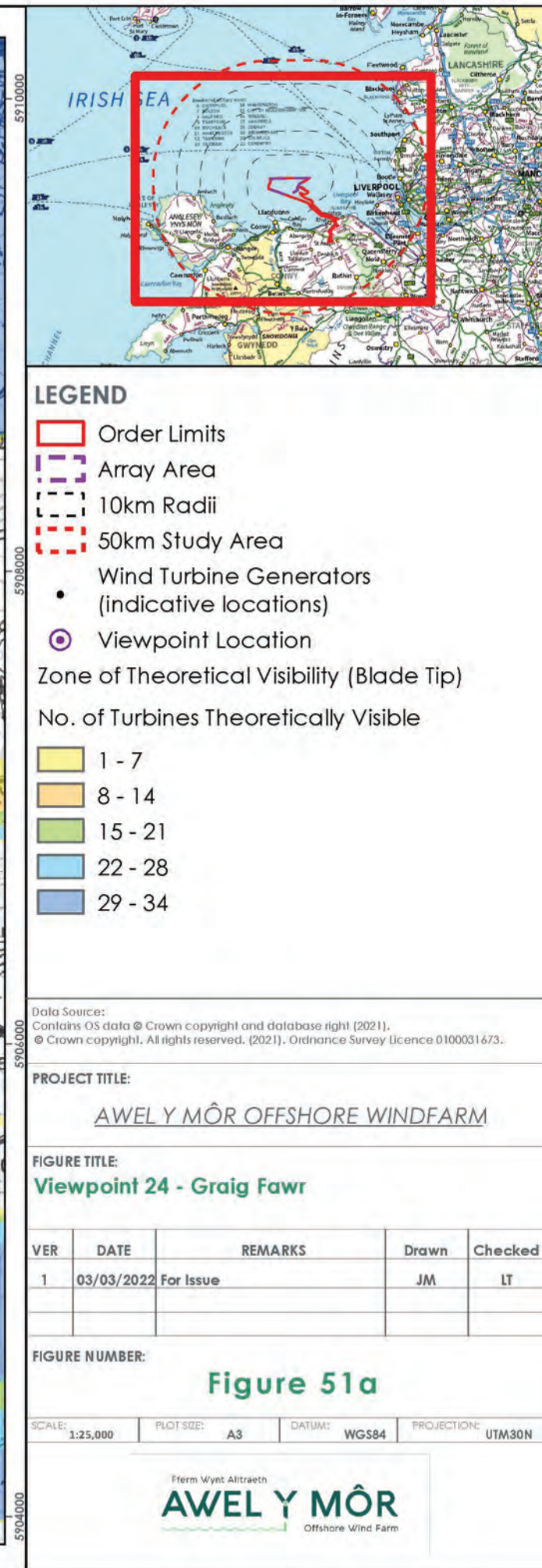
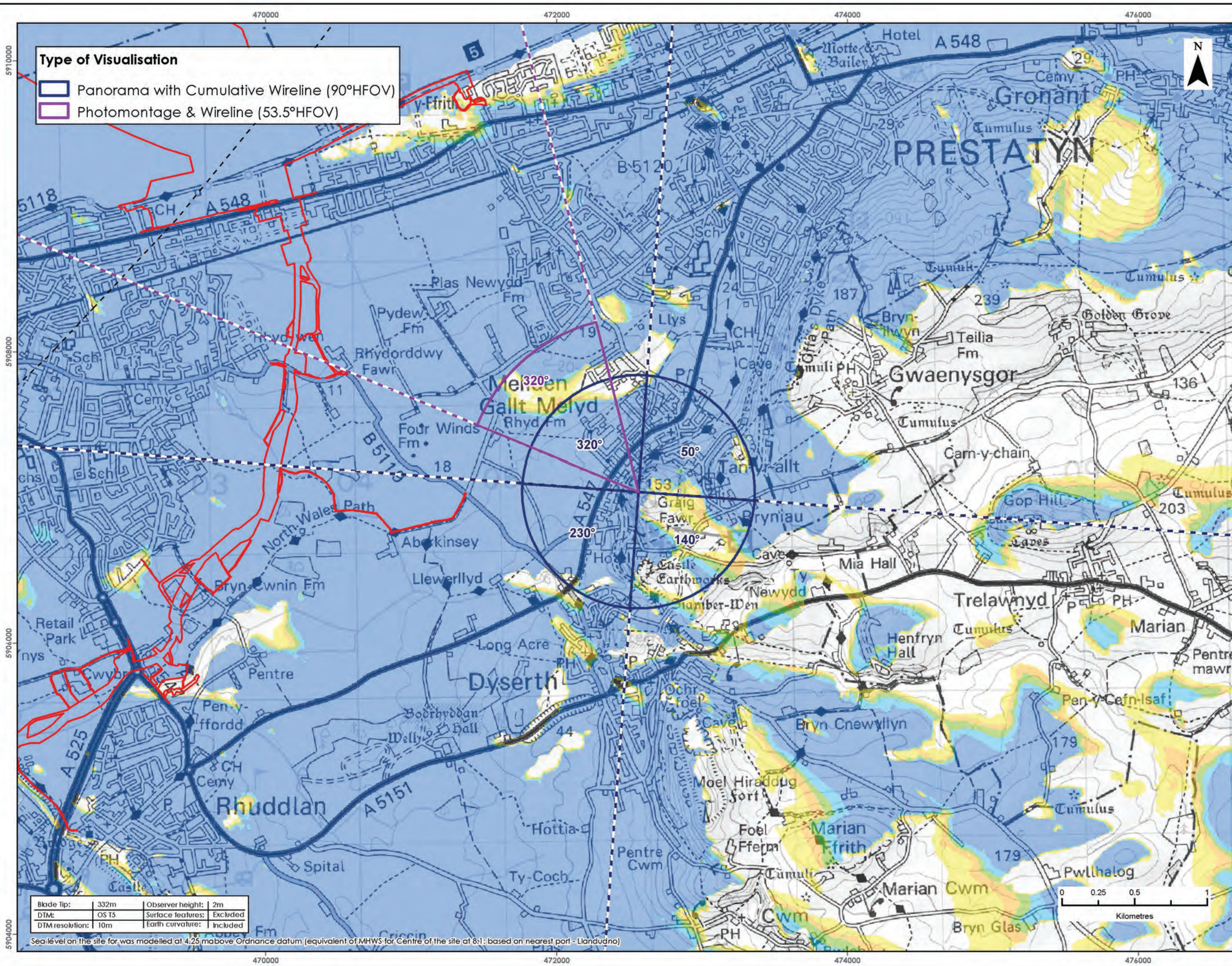
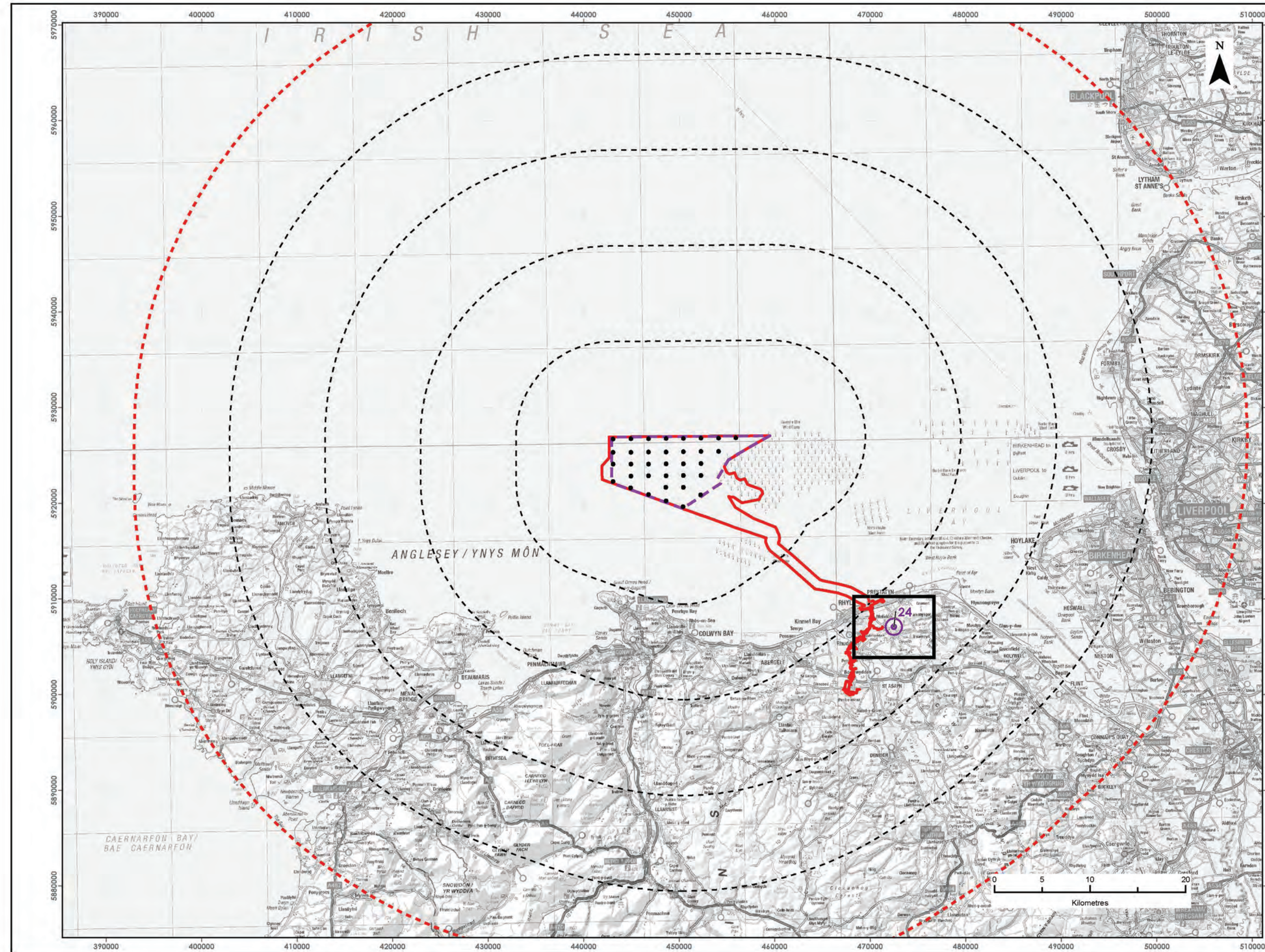
REVISION	DATE	STATUS/ REASON FOR ISSUE	AUTHOR:	CHECKED BY:	APPROVED BY:
A	April 2022	ES	OPEN	SLR/GoBe	RWE

www.awelymor.cymru

RWE Renewables UK
Swindon Limited

Windmill Hill Business Park
Whitehill Way
Swindon
Wiltshire SN5 6PB
T +44 (0)8456 720 090
www.rwe.com

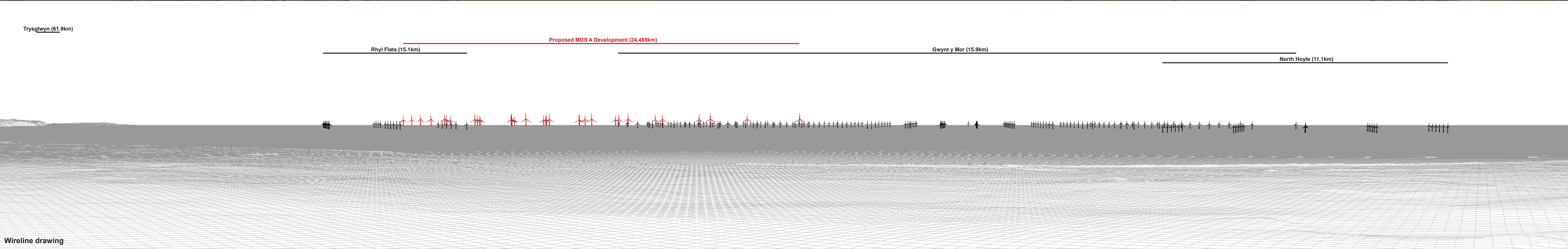
Registered office:
RWE Renewables UK
Swindon Limited
Windmill Hill Business Park
Whitehill Way
Swindon





Baseline photograph

This image provides landscape and visual context only

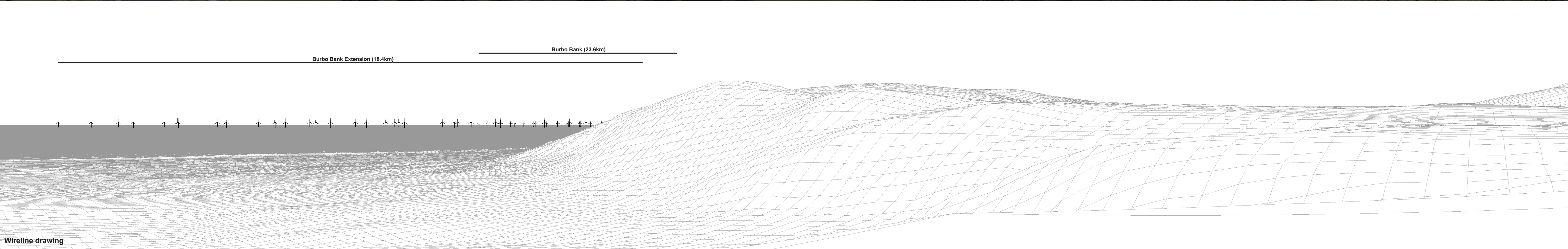


Wireline drawing



Baseline photograph

This image provides landscape and visual context only

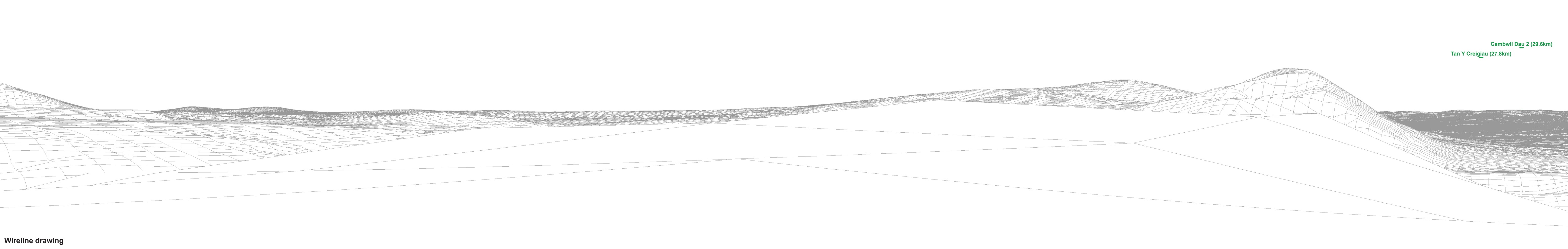


Wireline drawing



Baseline photograph

This image provides landscape and visual context only

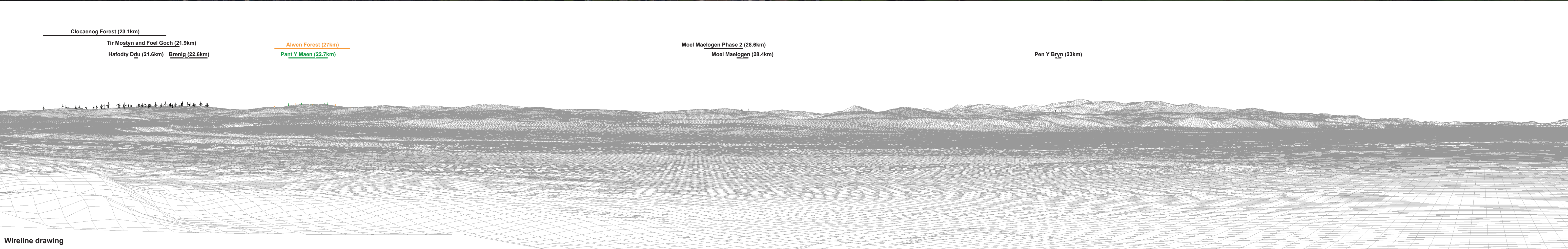


Wireline drawing

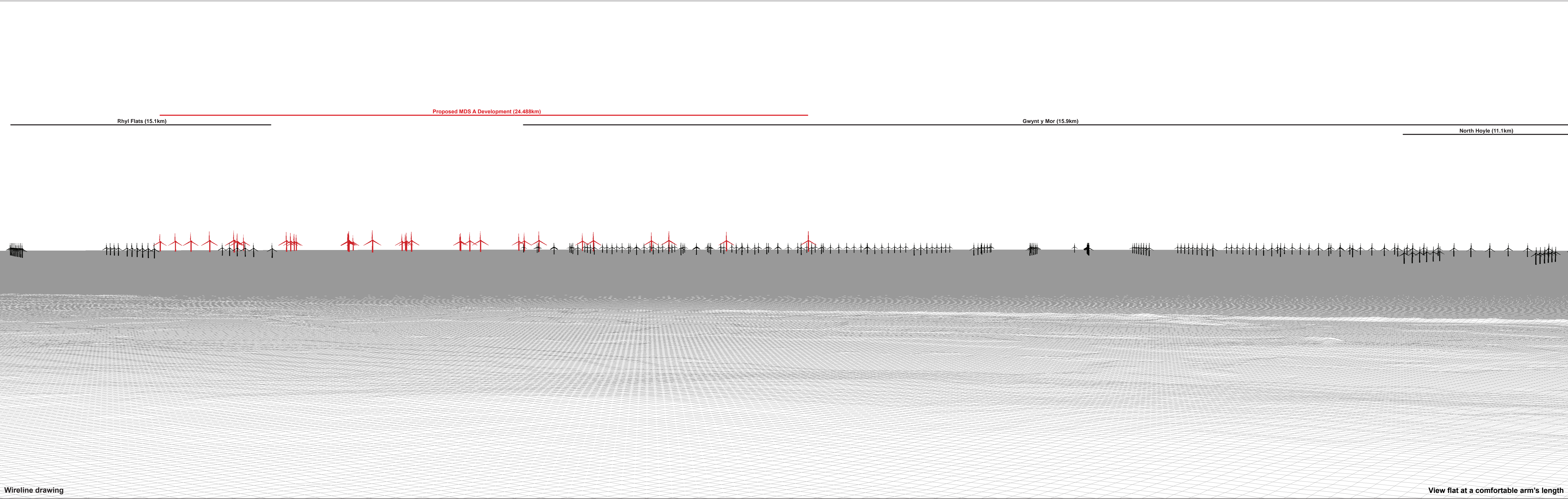


Baseline photograph

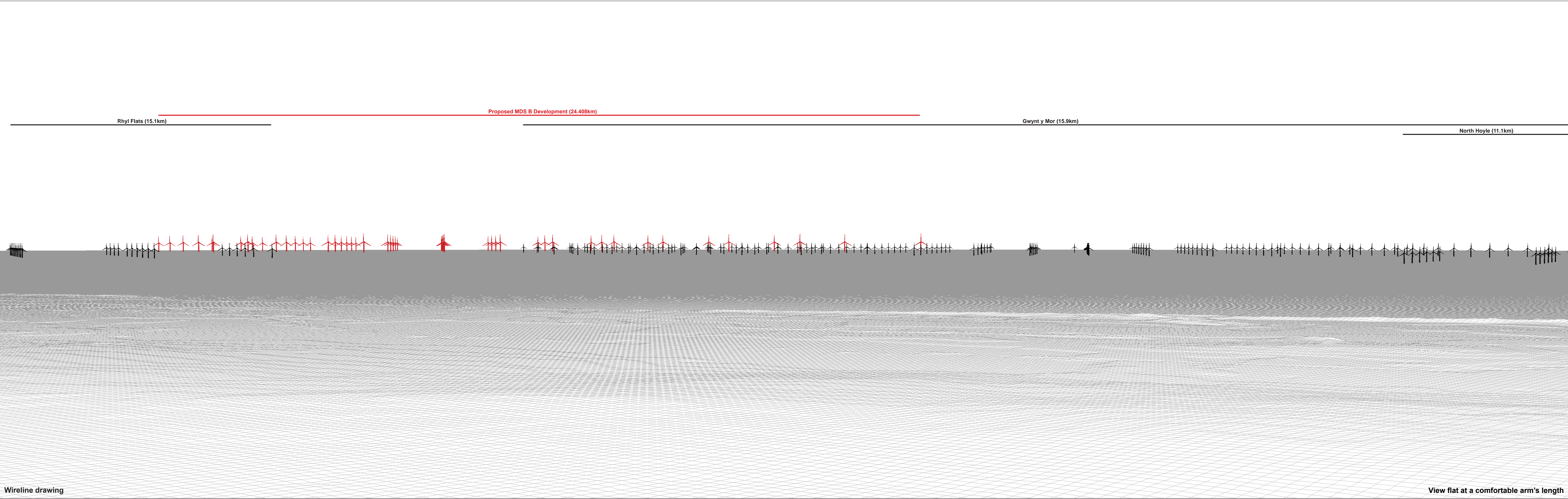
This image provides landscape and visual context only



Wireline drawing











RWE Renewables UK
Swindon Limited

Windmill Hill Business Park
Whitehill Way
Swindon
Wiltshire SN5 6PB
T +44 (0)8456 720 090
www.rwe.com

Registered office:
RWE Renewables UK
Swindon Limited
Windmill Hill Business Park
Whitehill Way
Swindon