



Awel y Môr Offshore Wind Farm

Category 6: Environmental Statement

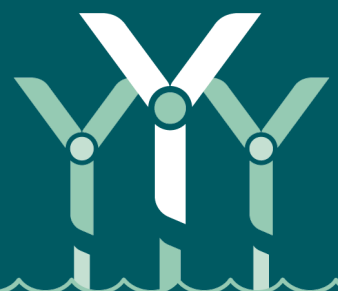
Volume 4, Annex 2.4: Seafloor and Shallow Geological Results (Array) (Part 4)

Date: April 2022

Revision: A

Application Reference: 6.4.2.4.4

Pursuant to: APFP Regulation 5(2)(a)



REVISION	DATE	STATUS/ REASON FOR ISSUE	AUTHOR:	CHECKED BY:	APPROVED BY:
A	March 2022	ES	Fugro	RWE	RWE

www.awelymor.cymru

RWE Renewables UK
Swindon Limited

Windmill Hill Business Park
Whitehill Way
Swindon
Wiltshire SN5 6PB
T +44 (0)8456 720 090
www.rwe.com

Registered office:
RWE Renewables UK
Swindon Limited
Windmill Hill Business Park
Whitehill Way
Swindon



- Legend**
- UTM Grid
 - Geographical Grid
 - Chart Extent
 - Wind Farm Extent
 - Array Survey Extent
 - Export Cable Route Survey Extent

Notes

1) Side scan sonar mosaic created from Edgetech 4205 simultaneous bi-frequency (230 / 540 / 850 kHz), processed with a 0.1 m cell size.

This document may only be used for the purpose for which it was commissioned and in accordance with the terms of engagement for that commission. Unauthorised use of this document in any form whatsoever is prohibited.

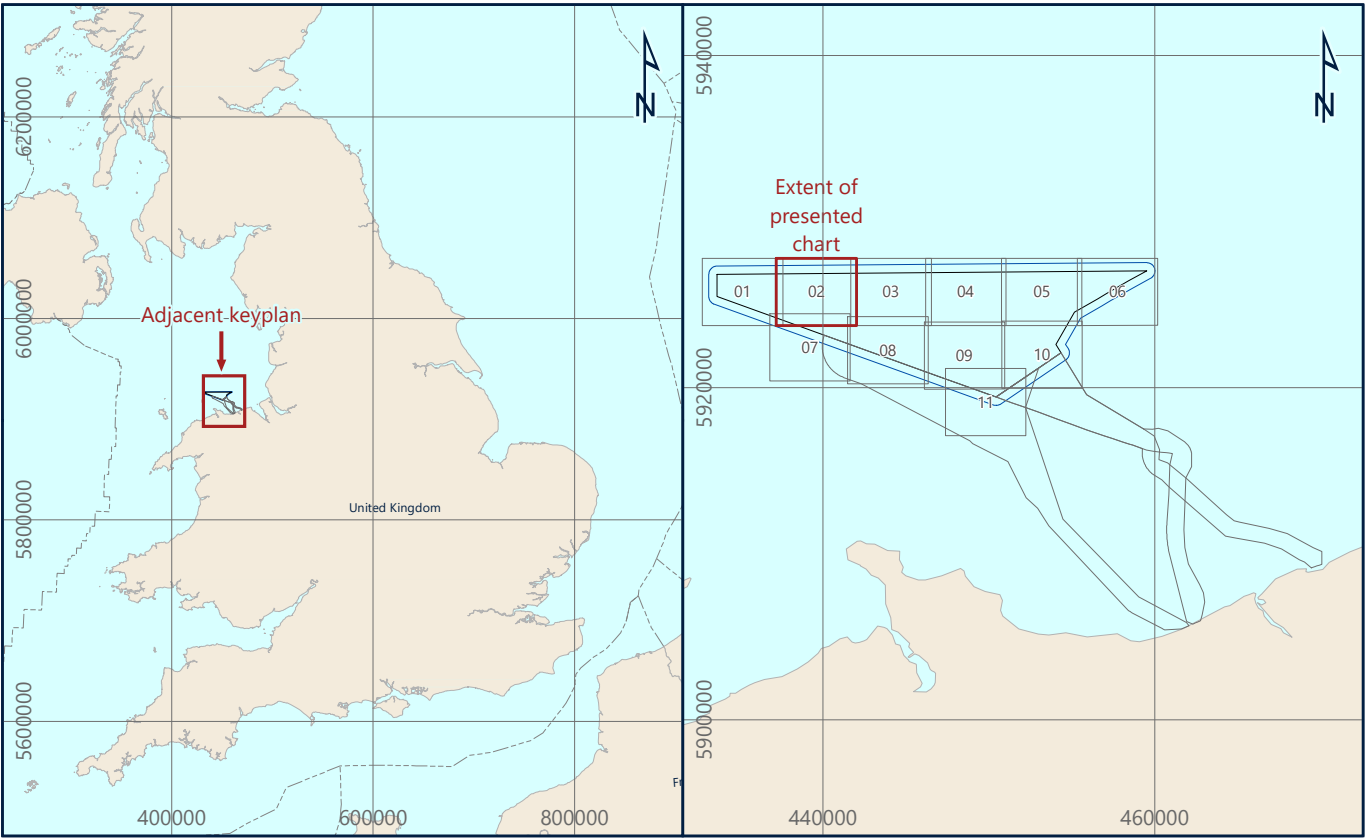
Geodetic Parameters

Geodetic datum: World Geodetic System 1984

Ellipsoid: WGS84
Semi-Major Axis: 6,378,137.000 m
Inverse Flattening: 298.257223563

Projection: WGS84 / UTM Zone 30N (EPSG: 32630)
Central Meridian (CM): 03°00'00" W
Latitude of Origin: 07°00'00" N
False Easting: 500,000 mE
False Northing: 0 mN
Scale Factor at CM: 0.9996

Vertical datum: Lowest Astronomical Tide (LAT) - calculated using the Vertical Offshore Reference Frame (VORF)



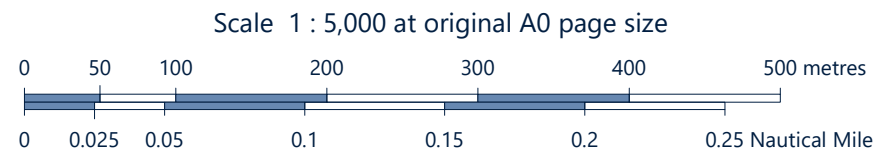
Awel Y Môr Offshore Wind Farm Ltd
Trigona Bay, Windmill Hill Business Park, Whitehill Way, Swindon, SN2 6PR, United Kingdom

AWEL Y MÔR

Fugro
Victory House, Trellicker Wharf Unit 161, Hamilton Road, Portsmouth PO6 4PX
Tel: +44 23 8220 3500

FUGRO

SIDE SCAN SONAR MOSAIC
AWEL Y MÔR OFFSHORE WIND FARM
GEOPHYSICAL SURVEY 2020
UK IRISH SEA



Issue	Date	Status	Interpreted	Prepared	Checked	Approved
01	07 October 2020	Draft Issue - Revision 1	OOT	DS	SB	BPT
02	01 December 2020	Final Issue - Revision 2	OOT	DS	SB	BPT
03	04 February 2021	Final Release - Revision 3	OOT	DS	SB	BPT
-	-	-	-	-	-	-

Fugro Project No.	Vessel(s)	Survey Date
200655	Fugro Mercator	10 June to 11 August 2020
File Name		Chart No.
200655_Array_SideScanSonarMosaic.02		02 of 11



RWE Renewables UK
Swindon Limited

Windmill Hill Business Park
Whitehill Way
Swindon
Wiltshire SN5 6PB
T +44 (0)8456 720 090
www.rwe.com

Registered office:
RWE Renewables UK
Swindon Limited
Windmill Hill Business Park
Whitehill Way
Swindon