



Awel y Môr Offshore Wind Farm

Category 6: Environmental Statement

Volume 4, Annex 2.4: Seafloor and Shallow Geological Results (Array) (Part 8)

Date: April 2022

Revision: A

Application Reference: 6.4.2.4.7

Pursuant to: APFP Regulation 5(2)(a)



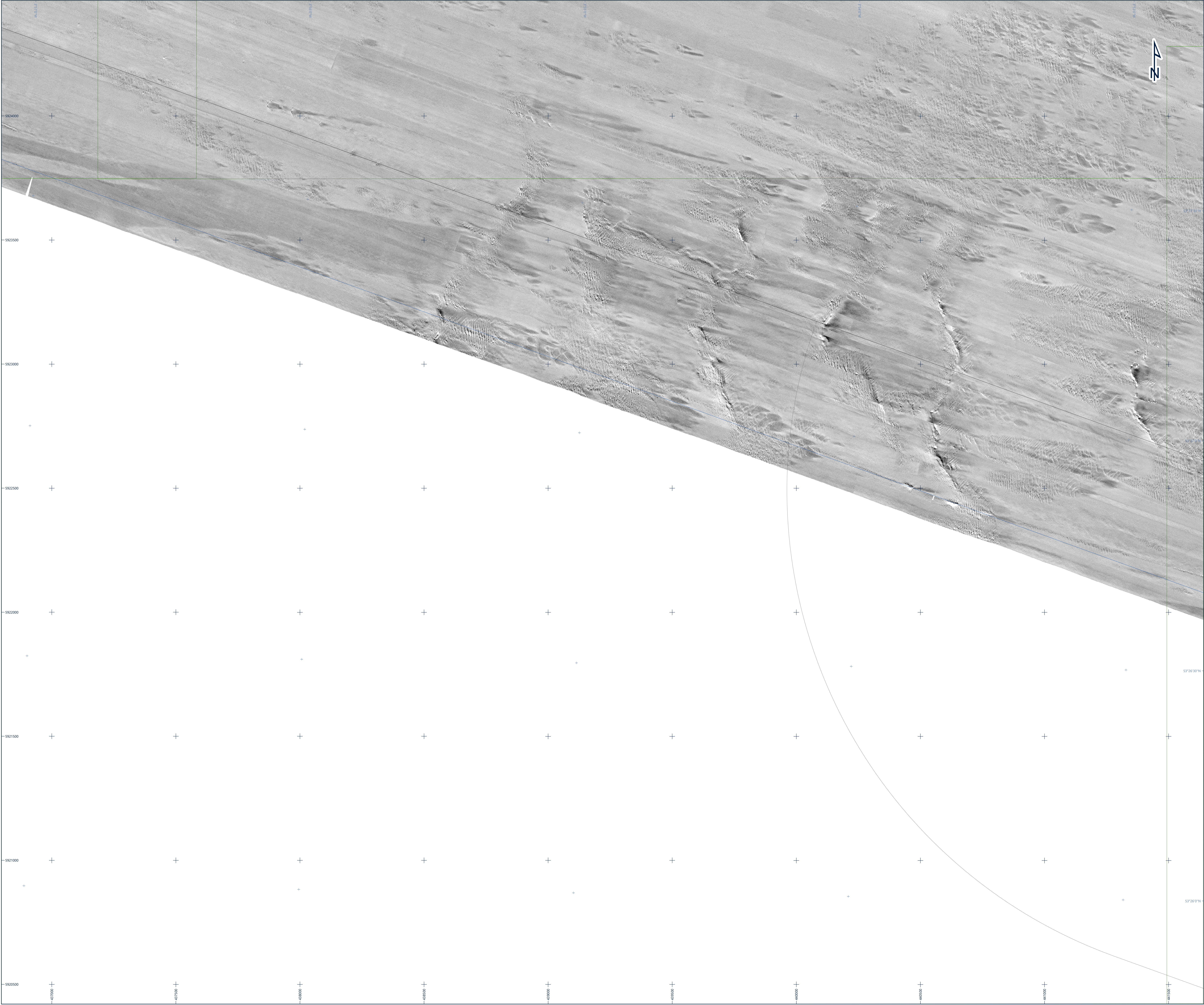
REVISION	DATE	STATUS/ REASON FOR ISSUE	AUTHOR:	CHECKED BY:	APPROVED BY:
A	March 2022	ES	Fugro	RWE	RWE

www.awelymor.cymru

RWE Renewables UK
Swindon Limited

Windmill Hill Business Park
Whitehill Way
Swindon
Wiltshire SN5 6PB
T +44 (0)8456 720 090
www.rwe.com

Registered office:
RWE Renewables UK
Swindon Limited
Windmill Hill Business Park
Whitehill Way
Swindon



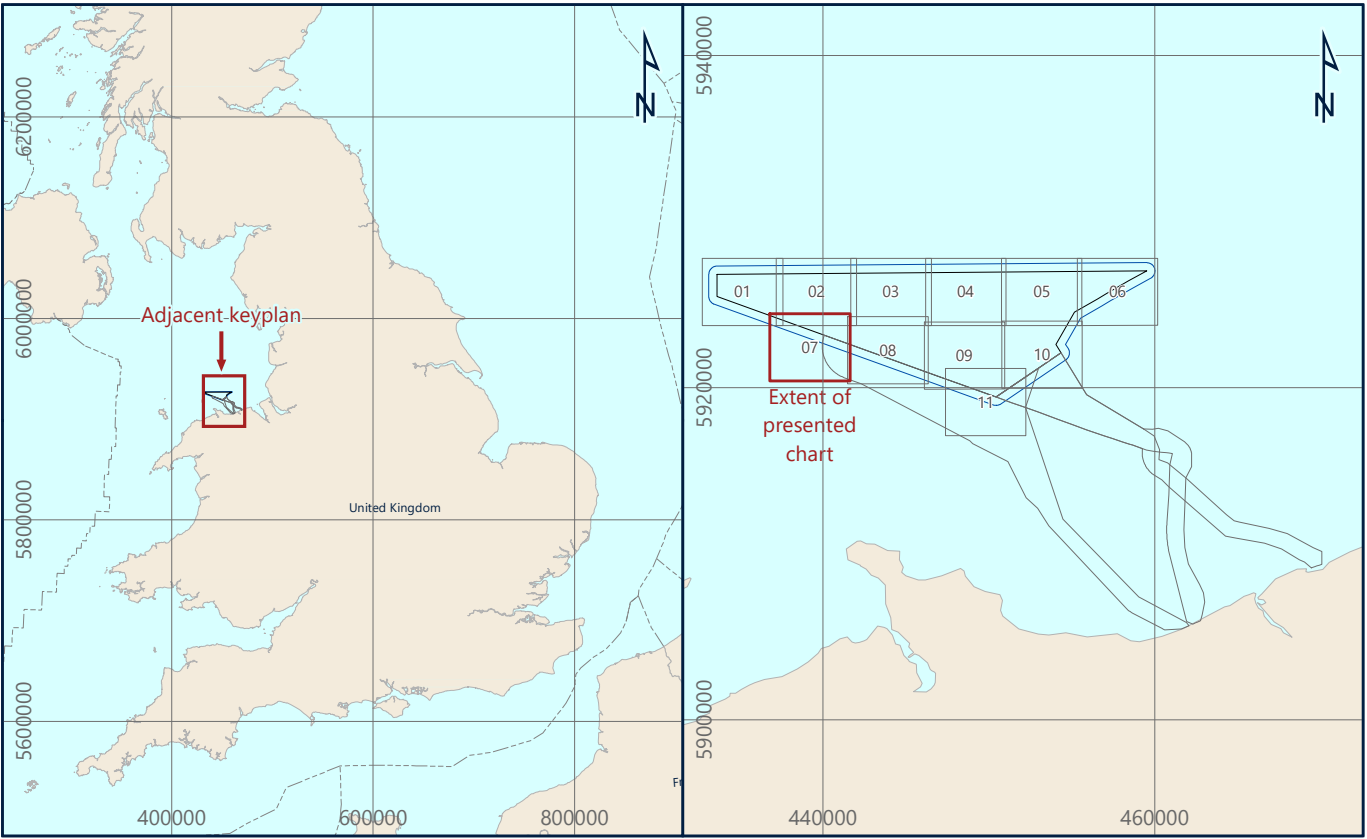
- Legend**
- UTM Grid
 - Geographical Grid
 - Chart Extent
 - Wind Farm Extent
 - Array Survey Extent
 - Export Cable Route Survey Extent

Notes

1) Side scan sonar mosaic created from Edgetech 420S simultaneous bi-frequency (230 / 540 / 850 kHz), processed with a 0.1 m cell size.

This document may only be used for the purpose for which it was commissioned and in accordance with the terms of engagement for that commission. Unauthorised use of this document in any form whatsoever is prohibited.

Geodetic Parameters	
Geodetic datum	World Geodetic System 1984
Ellipsoid	WGS84
Semi-Major Axis	6,378,137.000 m
Inverse Flattening	298.257223563
Projection	WGS84 / UTM Zone 30N (EPSG: 32630)
Central Meridian (CM)	03°00'00" W
Latitude of Origin	09°00'00" N
Fake Easting	500,000 mE
Fake Northing	0 mN
Scale Factor at CM	0.9996
Vertical datum	Lowest Astronomical Tide (LAT) - calculated using the Vertical Offshore Reference Frame (VORF)



Awel Y Môr Offshore Wind Farm Ltd
Trigona Bldg, Windmill Hill Business Park, Whitehill Way, Swindon, SN2 6PR, United Kingdom

Fugro
Victory House, Trafalgar Wharf Unit 161, Hamilton Road, Portsmouth PO6 4PX
Tel: +44 23 9220 3500

AWEL Y MÔR OFFSHORE WIND FARM
SIDE SCAN SONAR MOSAIC
GEOPHYSICAL SURVEY 2020
UK IRISH SEA

Scale 1 : 5,000 at original A0 page size
0 50 100 200 300 400 500 metres
0 0.025 0.05 0.1 0.15 0.2 0.25 Nautical Miles

Issue	Date	Status	Interpreted	Prepared	Checked	Approved
01	07 October 2020	Draft Issue - Revision 1	OOT	DS	SB	BPT
02	01 December 2020	Final Issue - Revision 2	OOT	DS	SB	BPT
03	04 February 2021	Final Release - Revision 3	OOT	DS	SB	BPT
-	-	-	-	-	-	-

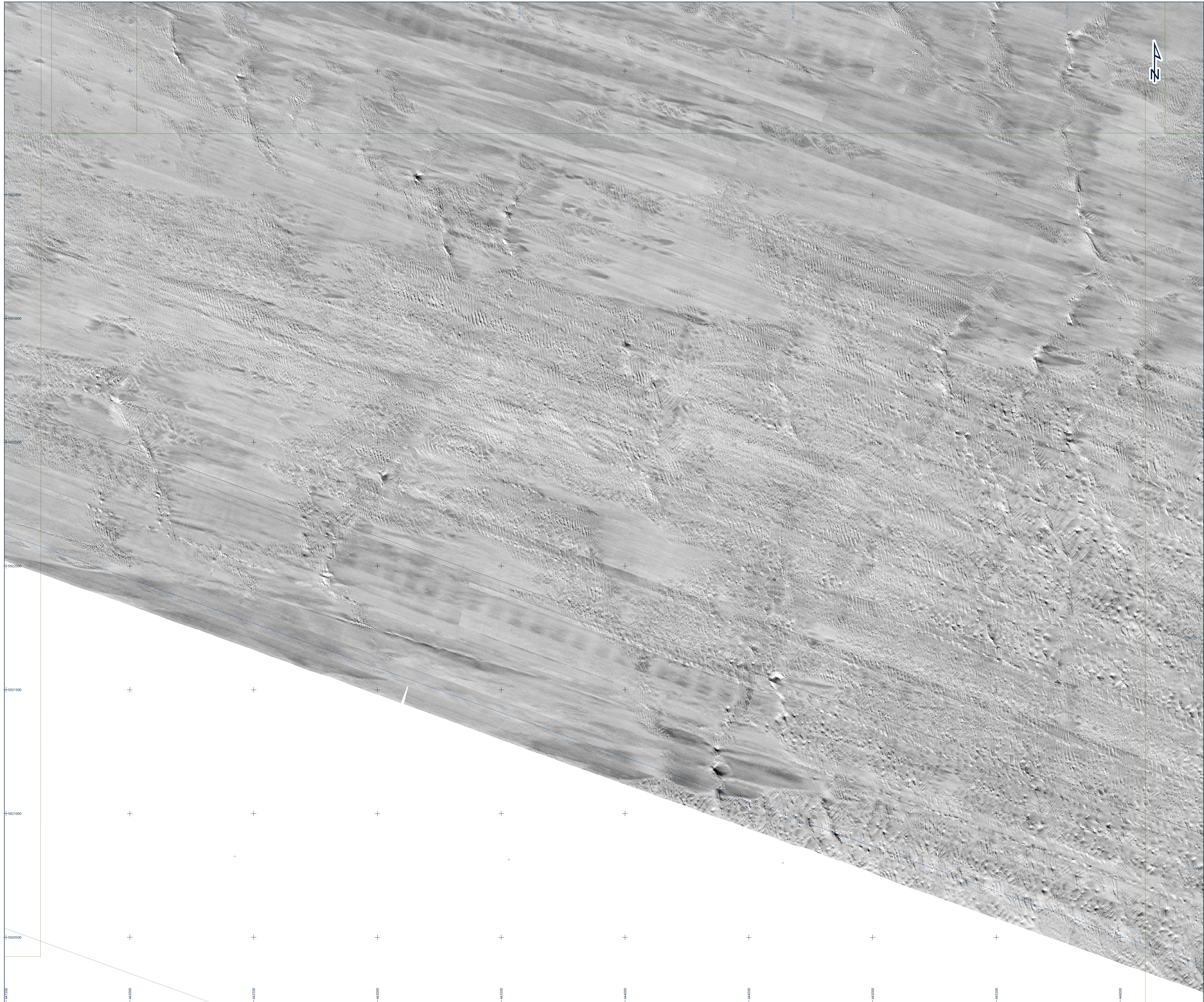
Fugro Project No.
200655

Vessel(s)
Fugro Mercator

Survey Date
10 June to 11 August 2020

File Name
200655_Array_SideScanSonarMosaic_07

Chart No.
07 of 11



- Legend
- UTM Grid
 - Geographical Grid
 - Chart Extent
 - Wind Farm Extent
 - Array Survey Extent
 - Export Cable Route Survey Extent

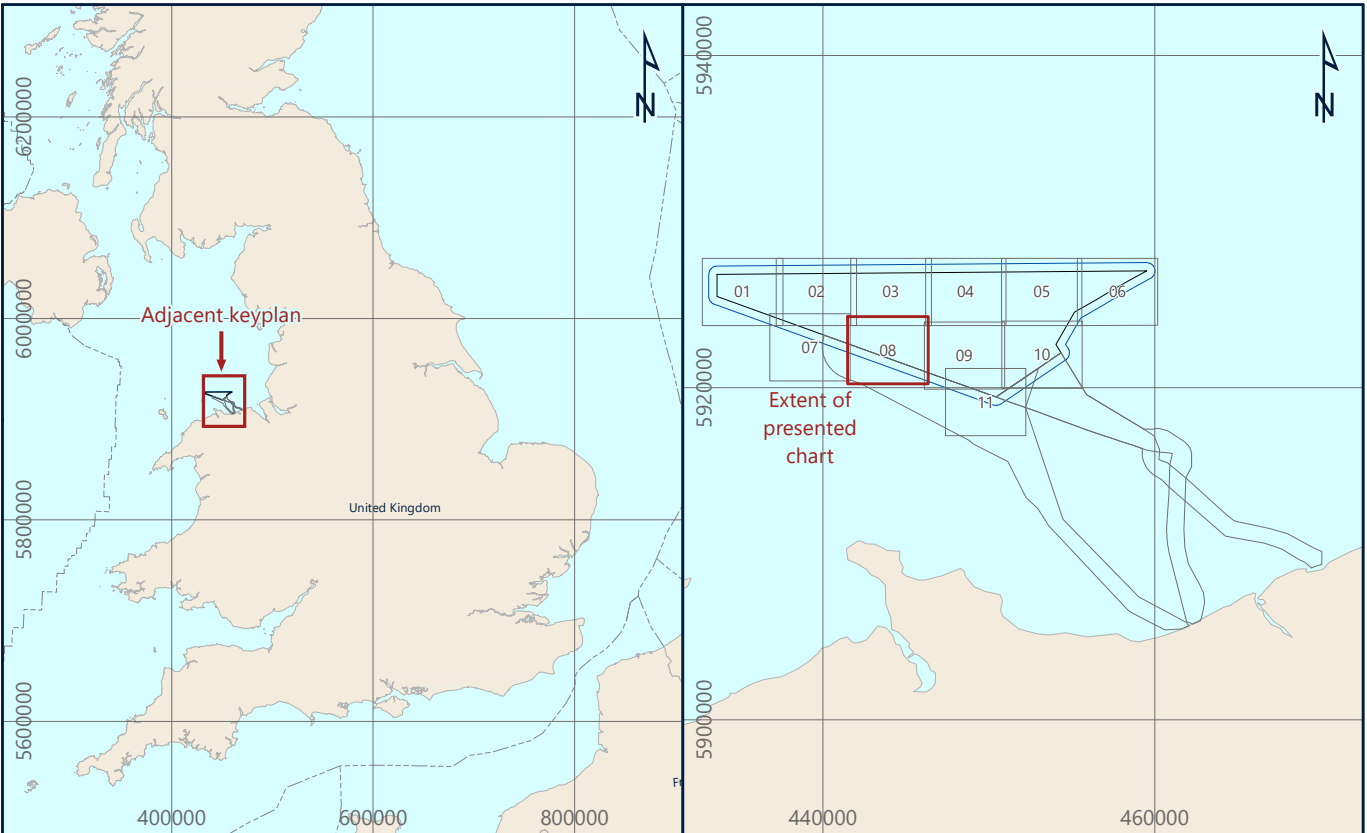
Notes

1) Side scan sonar mosaic created from Edgetech 420S simultaneous bi-frequency (230 / 540 / 850 kHz), processed with a 0.1 m cell size.

This document may only be used for the purpose for which it was commissioned and in accordance with the terms of engagement for that commission. Unauthorised use of this document in any form whatsoever is prohibited.

Geodetic Parameters

Geodetic datum	World Geodetic System 1984
Ellipsoid	WGS84
Semi-Major Axis	6,378,137.000 m
Inverse Flattening	298.257223563
Projection	WGS84 / UTM Zone 30N (EPSG: 32630)
Central Meridian (CM)	03°00'00" W
Latitude of Origin	07°00'00" N
Fake Easting	500,000 mE
Fake Northing	0 mN
Scale factor at CM	0.9996
Vertical datum	Lowest Astronomical Tide (LAT) - calculated using the Vertical Offshore Reference Frame (VORF)



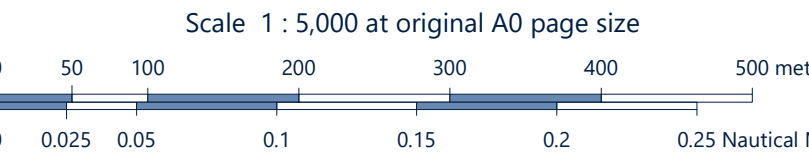
Awel Y Môr Offshore Wind Farm Ltd
Trigonoa Bldg, Windmill Hill Business Park, Whitehill Way, Swindon, SN2 6PR, United Kingdom

AWEL Y MÔR

Fugro
Victory House, Tregear Wharf Unit 161, Hamilton Road, Porchester PO6 4PX
Tel: +44 23 8220 3500

FUGRO

SIDE SCAN SONAR MOSAIC
AWEL Y MÔR OFFSHORE WIND FARM
GEOPHYSICAL SURVEY 2020
UK IRISH SEA



Issue	Date	Status	Interpreted	Prepared	Checked	Approved
01	07 October 2020	Draft Issue - Revision 1	OOT	DS	SB	BPT
02	01 December 2020	Final Issue - Revision 2	OOT	DS	SB	BPT
03	04 February 2021	Final Release - Revision 3	OOT	DS	SB	BPT
-	-	-	-	-	-	-

Fugro Project No.	Vessel(s)	Survey Date
200655	Fugro Mercator	10 June to 11 August 2020
File Name		Chart No.
200655_Array_SideScanSonarMosaic_08		08 of 11



RWE Renewables UK
Swindon Limited

Windmill Hill Business Park
Whitehill Way
Swindon
Wiltshire SN5 6PB
T +44 (0)8456 720 090
www.rwe.com

Registered office:
RWE Renewables UK
Swindon Limited
Windmill Hill Business Park
Whitehill Way
Swindon