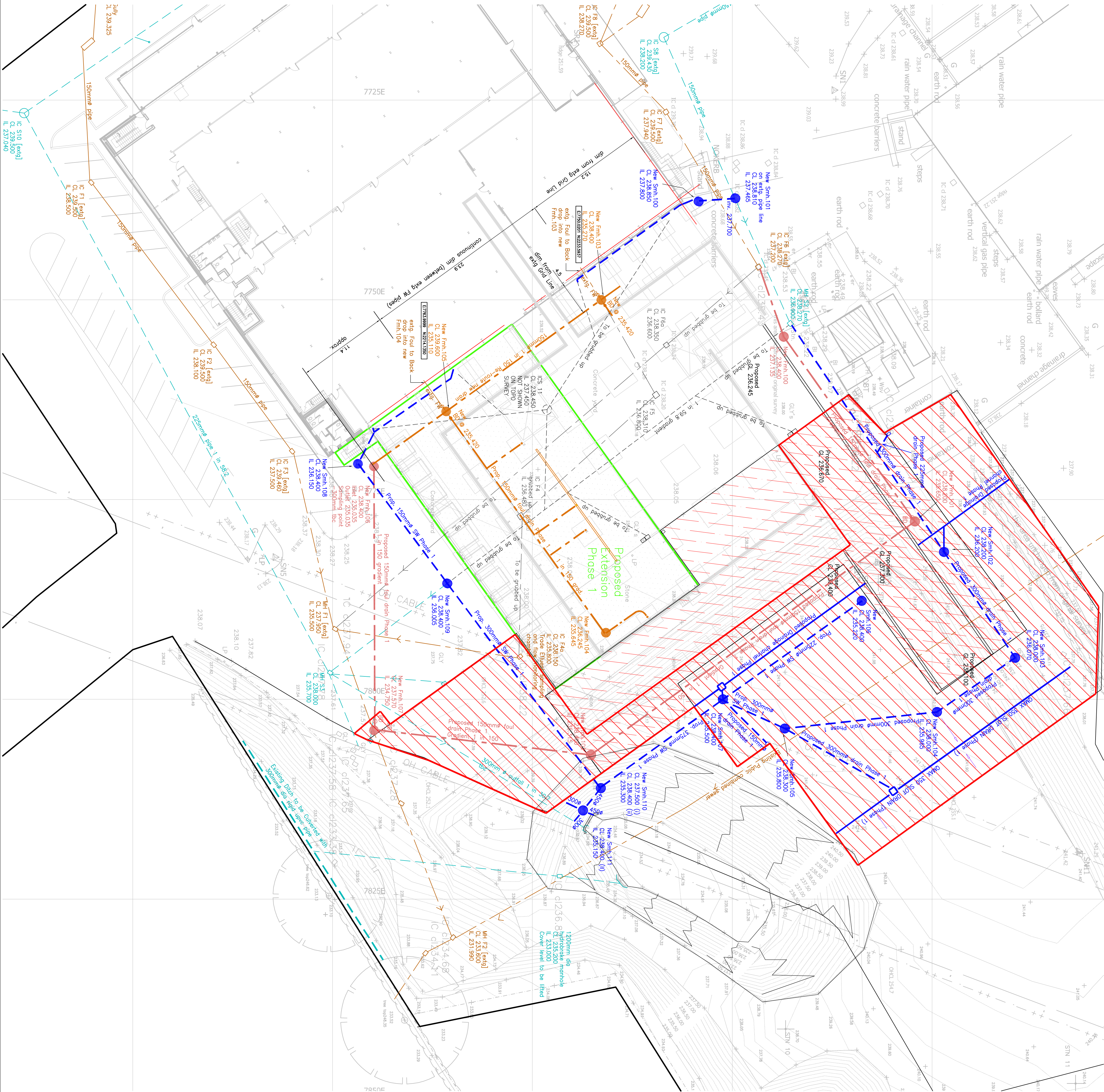


Ref No.	Cover Level (m)	Invert Level (m)	Depth (m)	Manhole Type	Chamber Size (m)	Min. Clear Space Covering (mm) & Type Ref
Smh.100	238.550	237.800	1.050	Type 2 P.C.	1,200 ø	C230
Smh.101	238.810	237.465	1.345	Type 2 P.C.	1,200 ø	D400
Smh.102	238.200	236.200	2.000	Type 2 P.C.	1,200 ø	D400
Smh.103	238.000	236.070	1.930	Type 2 P.C.	1,200 ø	D400
Smh.104	238.000	235.965	2.035	Type 2 P.C.	1,200 ø	D400
Smh.105	238.300	235.800	2.500	Type 2 P.C.	1,200 ø	D400
Smh.106	238.400	235.220	3.180	Type 2 P.C.	1,200 ø	D400
Smh.107	238.400	235.500	2.900	Type 2 P.C.	1,350 ø	D400
Smh.108	238.400	238.150	2.250	Type 2 P.C.	1,200 ø	C250
Smh.109	238.400	236.005	2.290	Type 2 P.C.	1,200 ø	D400
Smh.110	237.500 (f)	235.300 (f)	2.200 (f)	Type 2 P.C.	1,350 ø	D400
Smh.111	238.000 (f)	235.150 (f)	0.850 (f)	Type 2 P.C.	1,350 ø	D400
	238.400 (f)		3.750 (f)			

NOTE all manhole cover levels indicated are approximate
(f) denotes levels or depths @ Phase 1
(h) denotes levels or depths @ Phase 2

Ref No.	Cover Level (m)	Invert Level (m)	Depth (m)	Manhole Type	Chamber Size (m)	Min. Clear Space Covering (mm) & Type Ref
Fmh.100	238.400	237.135	1.265	Type 2 P.C	1,200 ø	D400
Fmh.101	238.200	235.650	2.550	Type 2 P.C	1,200 ø	D400
Fmh.102	238.400	235.315	3.085	Type 2 P.C	1,200 ø	D400
Fmh.103	238.400 (i) 239.600	235.270	3.130 (i) 4.330	Type 2 P.C	1,200 ø	D400
Fmh.104	236.245	235.645	0.600	P.C. I.C.	0.450 ø	450ø sealed
Fmh.105	239.600	235.110	4.490	Type 2 P.C	1,200 ø	D400
Fmh.106	238.400	234.735 				

NOTE all manhole cover levels indicated are approximate



- NOTES**
- UNLESS NOTED OTHERWISE, ALL BUILDING DRAINAGE PIPES TO BE WMAN ULTRABED P.C.-U TO BBA 98-3472.
 - PIPES TO BE Laid IN ACCORDANCE WITH APPROVED DRAINAGE DESIGN AND MANUFACTURERS' GUIDELINES.
 - ALL DRAINAGE TO BE SUPPLIED AND INSTALLED IN ACCORDANCE WITH BS 8301 AND BS 8005.
 - MINIMUM COVER TO 150mm DIA. PIPES: 600mm (FOR PIPES NOT UNDER ROADS)
 - ALWAYS CONSULT MANUFACTURERS' BEDDING AND SLOTTING REQUIREMENTS.
 - ALL PIPES WITH LESS THAN 1200mm COVER UNDER ROADS TO BE ENCASED WITH 150mm CONCRETE.
 - WHERE PIPES ARE SURROUNDING IN CONCRETE, PROVIDE COMPRESSIBLE BOARD JOINTS AT ALL PIPE JOINTS IN ACCORDANCE WITH BUILDING REGULATIONS.
 - ALL FOUL AND STORM WATER PIPES TO BE 100mm DIAMETER UNLESS NOTED OTHERWISE.
 - MINIMUM GRADIENT FOR FOUL WATER PIPES TO BE 100mm DIA. 1:40 OR 1:80 WITH <1 WC CONNECTION 150mm DIA. 1:150
 - MINIMUM GRADIENT FOR STORM WATER DRAINAGE 100mm DIA. 1:100 150mm DIA. 1:150
 - CONTRACTOR TO INSPECT AND CORRECT ANY OF ALL EXISTING INVERTS & CONNECTION MANHOLES. ANY DISCREPANCIES ARE TO BE REPORTED TO THE ENGINEER IMMEDIATELY.
 - ALL PROPRIETARY AUXILIARY ITEMS (e.g. ATTENUATION TANKS, OIL INTERCEPTORS ETC) TO BE INSTALLED IN ACCORDANCE WITH MANUFACTURERS' GUIDELINES.

New Building Extension Phase 1	
Existing Surface	
Existing Foul	
Combined	
Existing SW drainage	
To be grubbed up	
Existing PW drainage	
To be grubbed up	
New Foul Drainage	
CPV – ZURN/FLOWAY chemical drainage pipe system	
New Surface Drainage	

REV	DATE	DESCRIPTION	BY
A	17.08.16	Manhole schedules added, minor amendments to layout.	LUE
B	19.03.16	Revised Fmh.107 & Gully indicated. Reduced extent of concrete yard at entrance	LUE
C	20.09.16	Set out dims to New Internal PW Mh.s.	LUE

CLIENT
Haston Reynolds

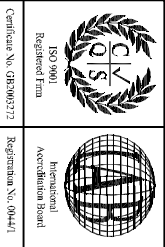
PROJECT
Cold Store Extension
Fire Crosses Industrial
Estate Minera, Wrexham

DRAWING TITLE
Proposed Drainage Layout
Phase 1

PRELIMINARY

aba consulting
Consulting Civil & Structural Engineers

Unit A Racecourse Business Park
Doverfields, Uxeteres
Staffordshire, ST14 6GB
Tel : 01889 569856 Fax : 01889 567154
info@aba-consulting.co.uk



DRAWN BY	N.W.Edge	DATE	August 2016
CHECKED BY	AP	SCALE	1:250
PROJECT NO	14150	DRAWING NO	500
		REVISION	C