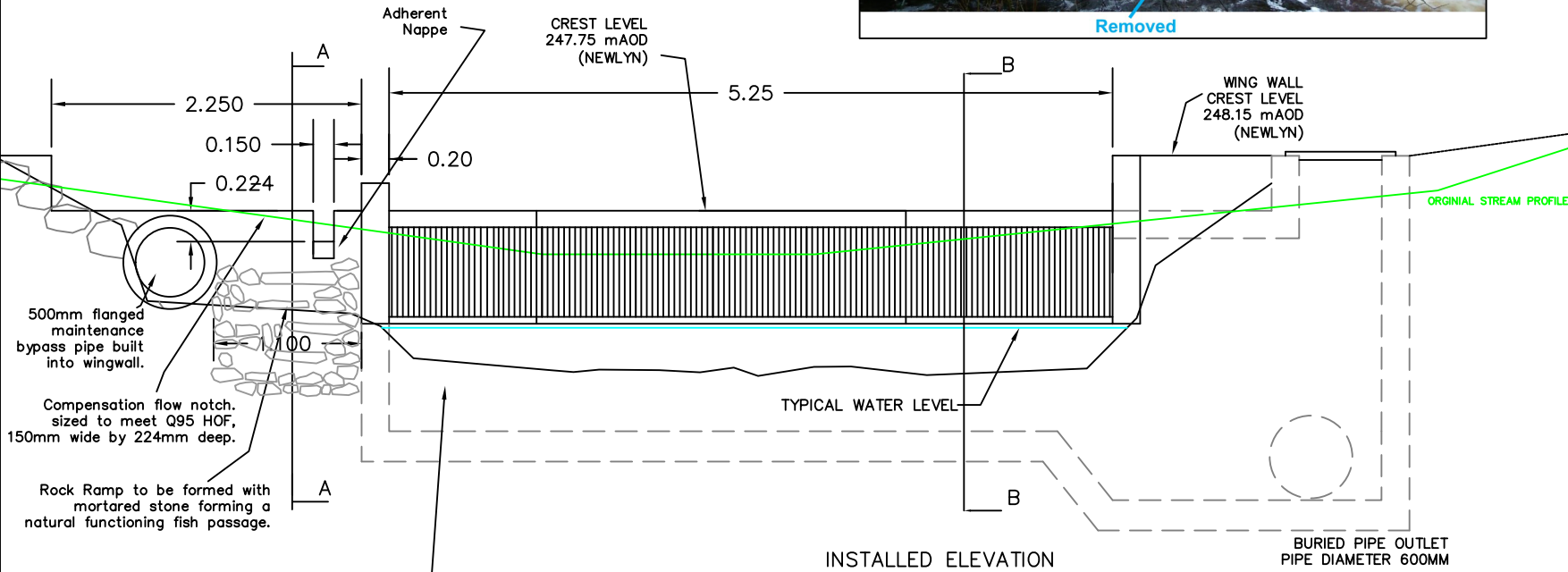


COANDA SCREEN  
3 x TYPE D-1500 and 1 x TYPE D-750  
ALL FROM 304 STAINLESS STEEL  
1MM APERTURE

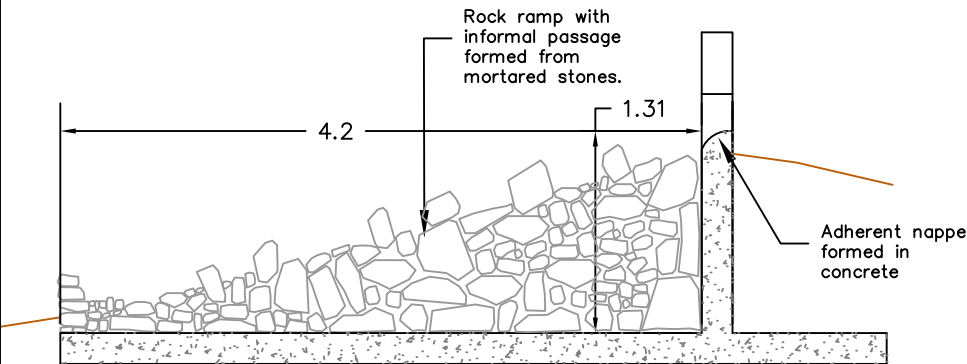
CONSTRUCTION NOTES  
The weir will be constructed by creating the concrete sump structure and bolting on the prefabricated screen. Existing boulders that form the existing cascade are to be retained, as per adjacent image, to ensure that post intake life upstream bed erosion does not occur (NRW requirement with upstream bridge culvert in mind)



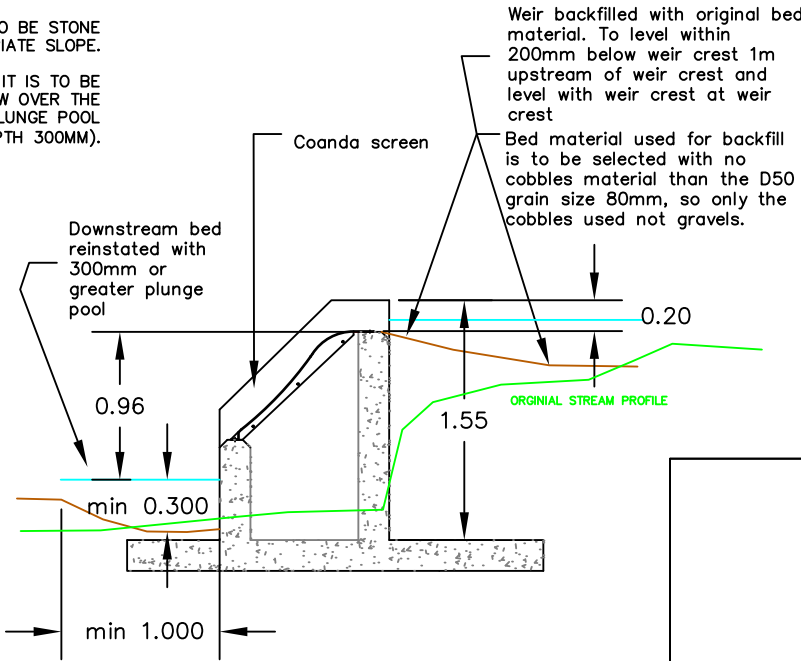
PLUNGE POOL CREATED USING APPROPRIATELY SIZED AND POSITIONED BOULDERS Full width of screen section of weir, so width is 5.25m

THE DOWNSTREAM FACE OF THE WEIR IS TO BE STONE FACED AS SHOWN WITH APPROPRIATE SLOPE.

FROM APPROPRIATE BOULDER PLACEMENT IT IS TO BE ENSURED THAT COMPENSATION FLOW AND FLOW OVER THE COANDA CREST FLOWS DOWN INTO PLUNGE POOL DOWNSTREAM OF WEIR (MIN DEPTH 300MM).

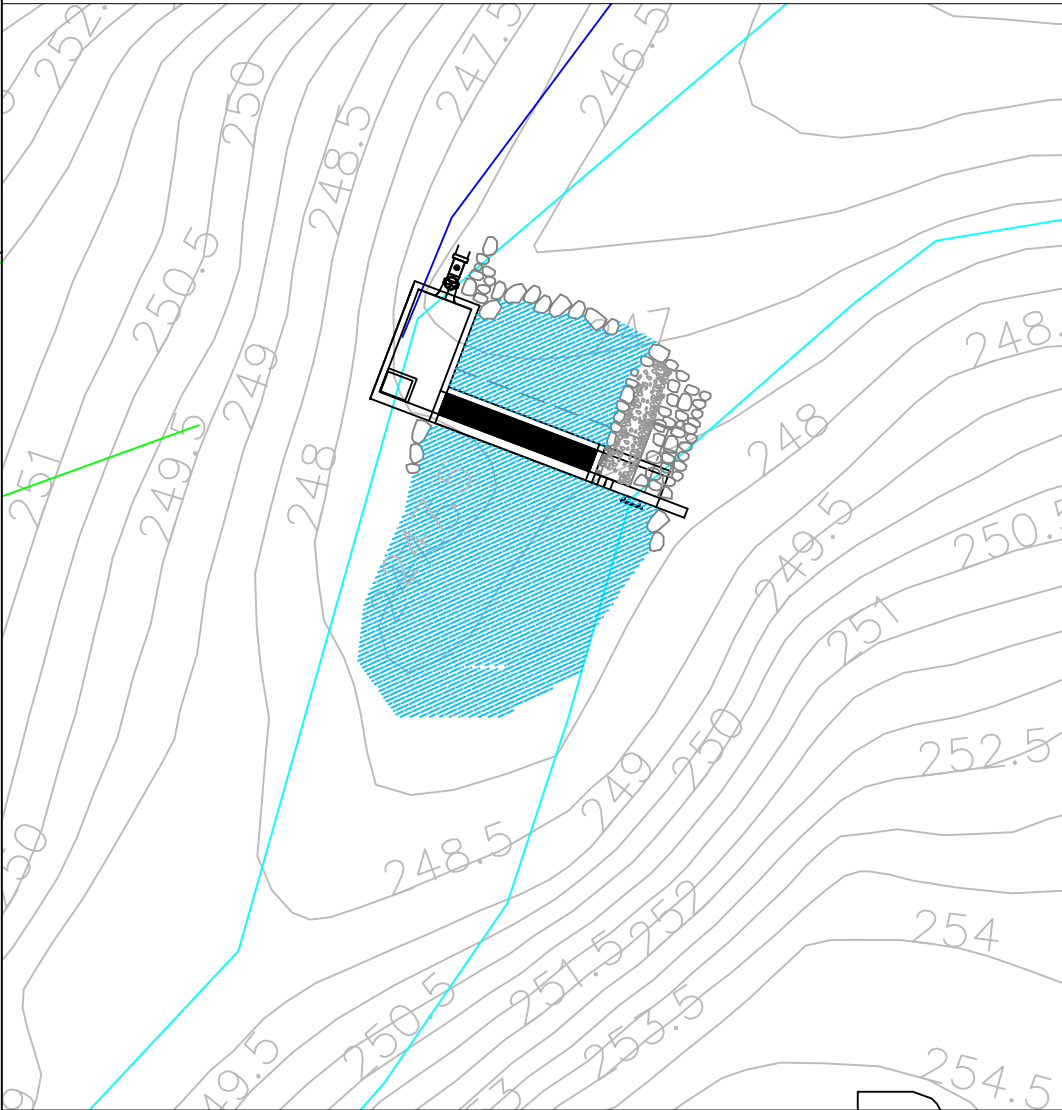


Elevation/Section A-A



Elevation/Section B-B

REVISIONS				
ZONE	REV	DESCRIPTION	DATE	APPROVED



Plan View

	DRAWING TITLE INTAKE				
	PROJECT GALEDFFRWD HYDRO SCHEME				
DIMENSIONS IN M © 2011	SIZE A3	FSCM NO.	DWG NO. GLFH–DWG–Intake–F–191018–DM		REV F
PRELIMERY DRAWING FOR CONSENTING PURPOSES – NOT FOR CONSTRUCTION	SCALE 1: 50	DATE 19/10/2018	SHEET 1 OF 1		