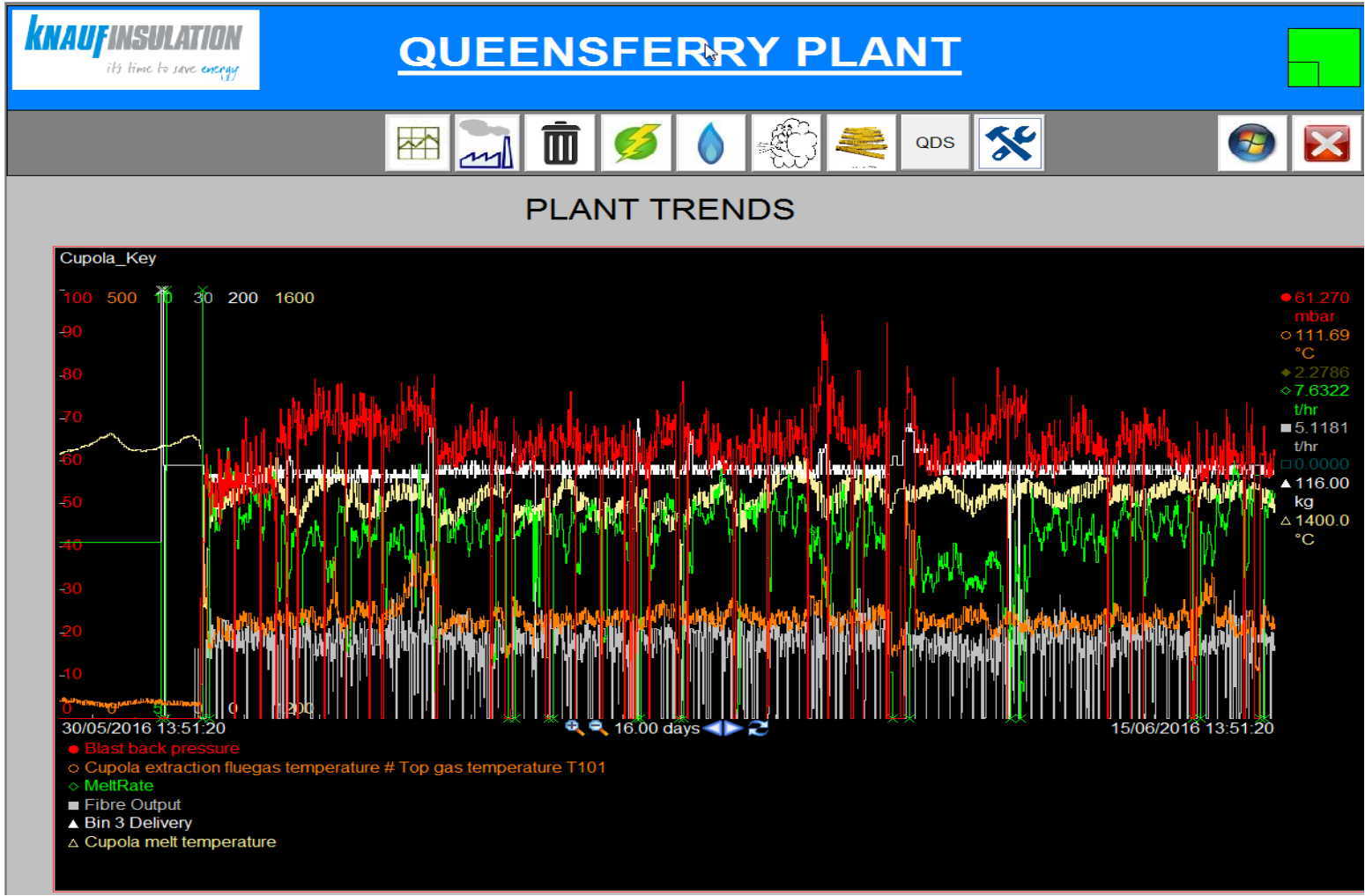


Plant Trend (PI ProcessBook):

- Cupola running conditions from 19/05/16 to 28/05/2016 – prior to the event
 - **Normal monitoring readings for backpressure, output, melt temperature and cupola top gas pressure**

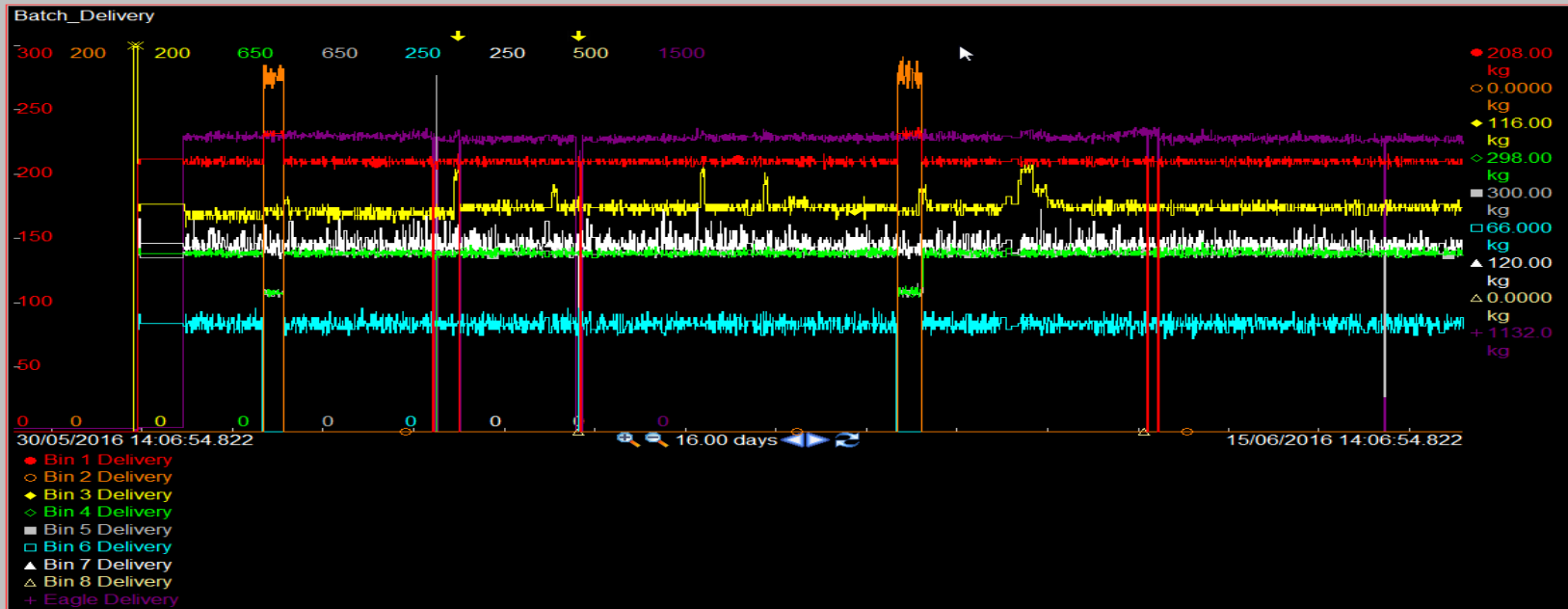


Plant Trend (PI ProcessBook):

- Cupola running conditions from 02/06/16 to 15/06/2016 – during the event (following plant start-up)
 - **Normal monitoring readings for backpressure, output, melt temperature and cupola top gas pressure**

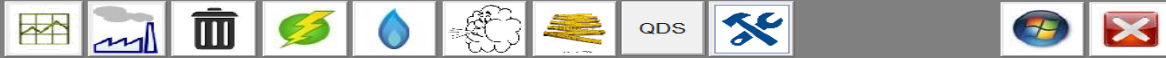


PLANT TRENDS

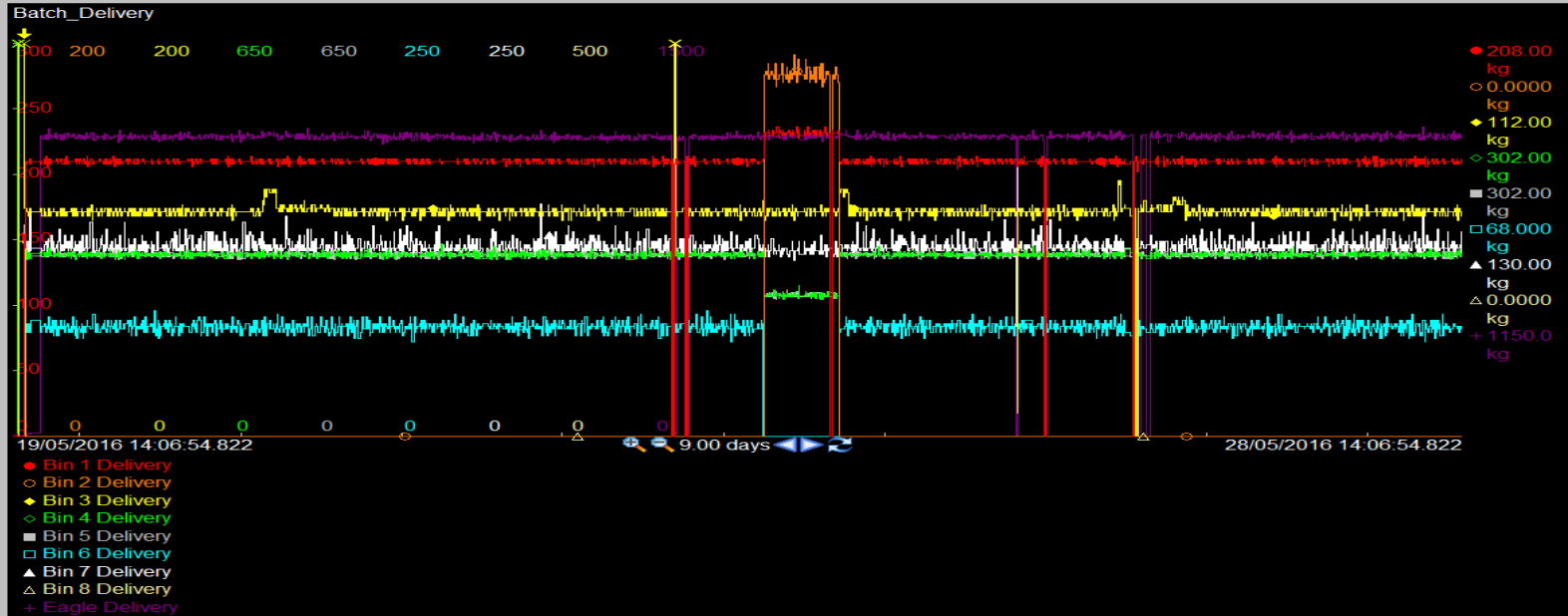


Plant Trend (PI ProcessBook):

- Stone batch delivery to cupola from 19/05/16 to 28/05/2016 – prior to the event
 - **Normal operation**

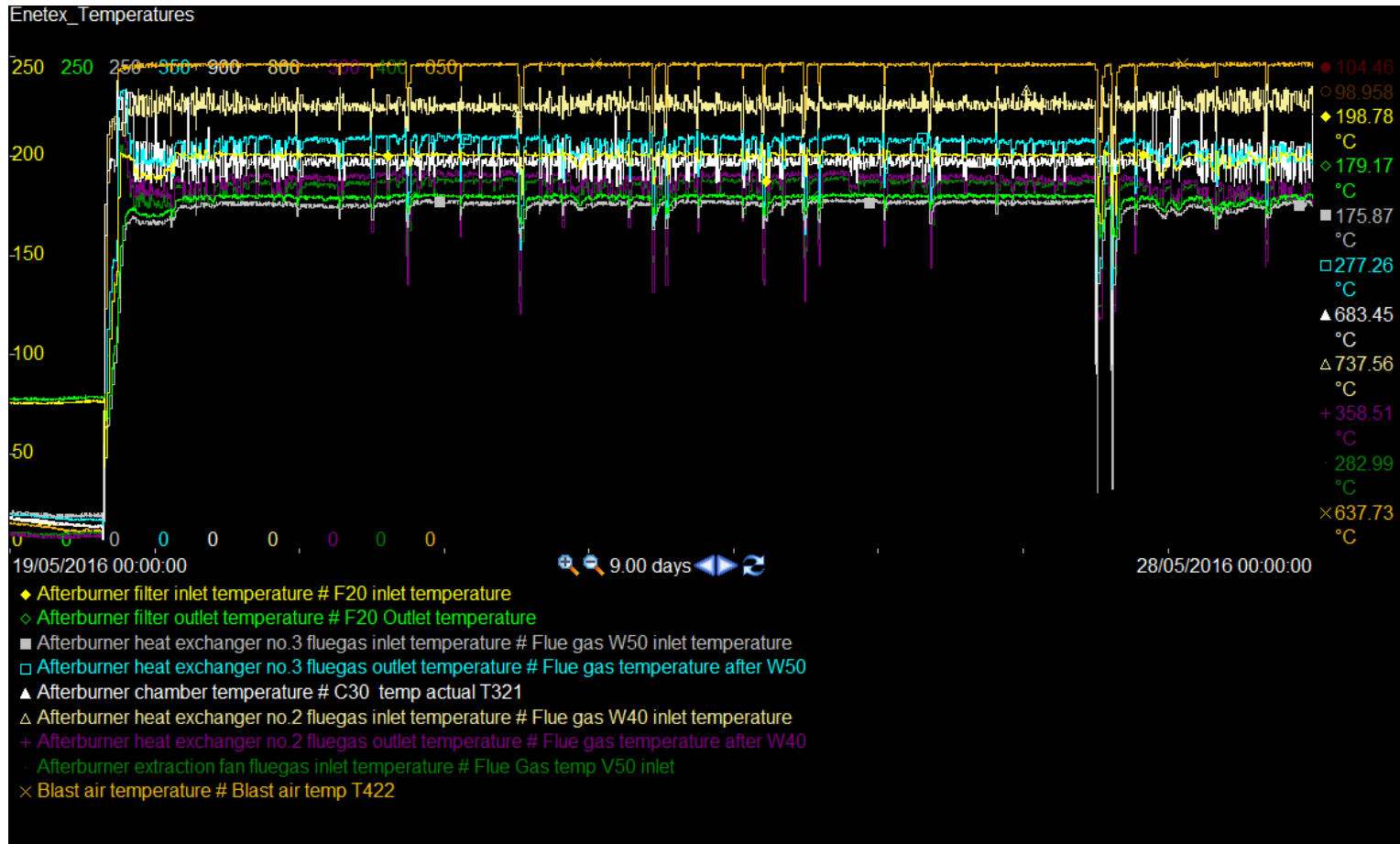


PLANT TRENDS



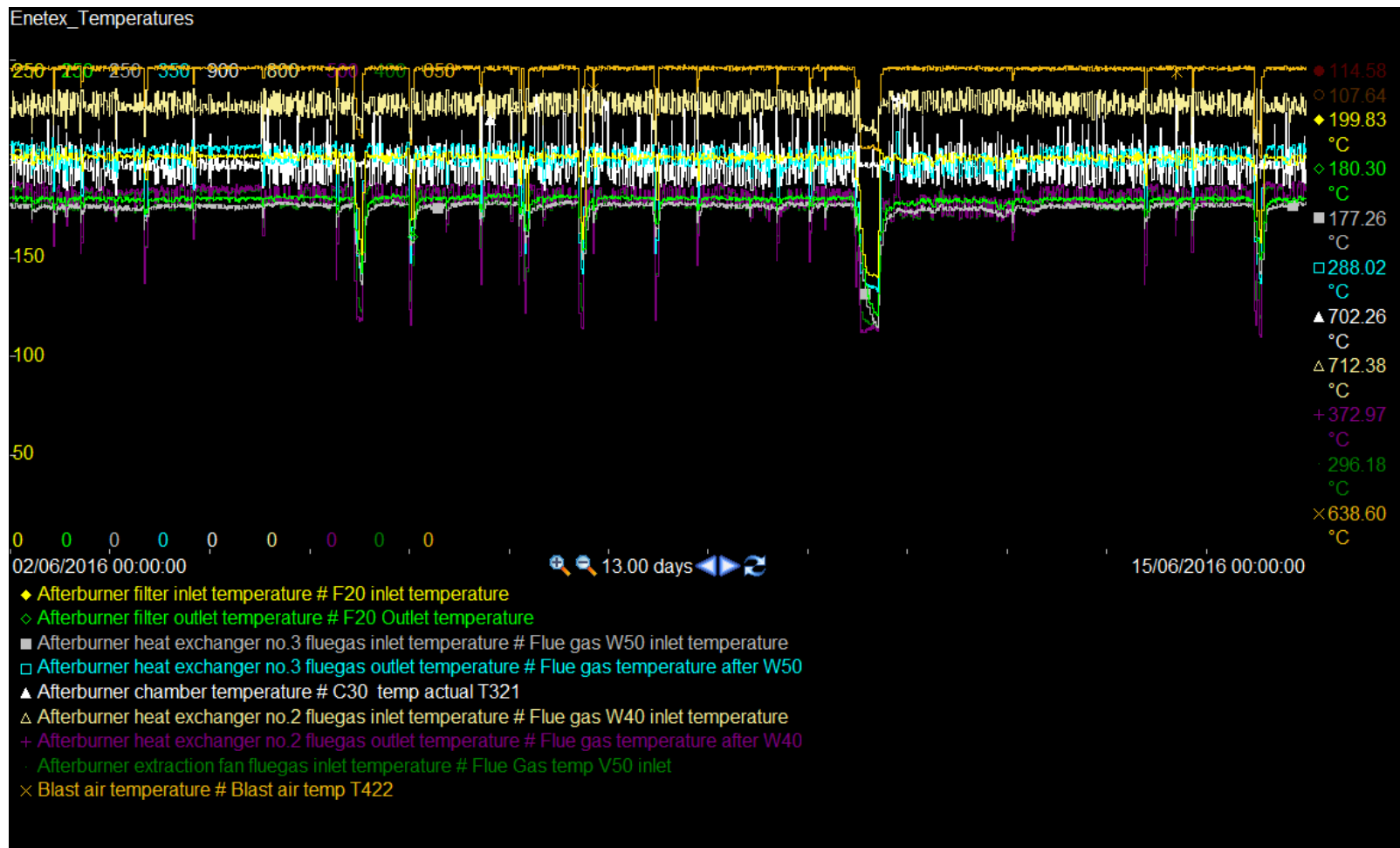
Plant Trend (PI ProcessBook):

- Stone batch delivery to cupola from 02/06/16 to 15/06/2016 – during the event (following plant start-up)
 - **Normal operation**



Plant Trend (PI ProcessBook):

- Flue Gas Treatment Plant temperatures 19/05/2016 to 28/05/2016 – prior to the event
 - **Normal operation**



Plant Trend (PI ProcessBook):

- Flue Gas Treatment Plant temperatures 02/06/2016 to 15/06/2016 – during the event (following plant start-up)
 - **Normal operation**