



Title: Reporting Incinerator CEM

Area: Manufacturing

Issue No.: 1

Ref:

Last printed: 06/05/2015

Date of Issue: 21/12/2006

Related Document: BU2357/AP3634

Created on: 21-12-2006

Page: 1 of 2

Incinerator Summary Report - December 2014

Day			1	2	3	4	5	6	7	8	9	10	11	12	13	14	15	16	17	18
Running time	Residue	h	24	24	22.5	24	23.5	24	24	21.5	10.5	23	21	24	20	24	24	24	24	24
	Gas	h	0	0	1	0	1	0	0	3.5	14	1.5	3	0	4	0	0	0	0	0
	Residue & gas	h	0	0	0	0	0.5	0	0	1	1	1	1	0	0	0	0	0	0	0
	Idle	h	0	0	0.5	0	0	0	0	0	0	0.5	0.5	1	0	0	0	0	0	0
Total flow	Residue	kg	12834.8	13202	12384.2	13199.2	12761.8	13200.2	13200.5	10837.8	4087	10904.3	9396.7	11939.8	9781.7	11998.5	11743.7	10666.8	8452.2	7202.7
	Gas	m3	0	0	148.3	0	100.5	0	0	480.8	2091.2	225.2	399.7	0	568.7	0	0	0	0	0
	Air	m3	168422	167452	166130	166823	166497	169715	170284	157774	130563	152690	139668	157401	152123	164640	159926	140718	119986	105341
NOx (normalised)	Min	mg/m3	86	157.3	100.3	150.7	125.3	133.7	172.3	74.7	102	157.3	42	84.3	58	84	227.3	186.3	211.7	264.3
	Ave	mg/m3	107.1	267.1	223.8	262.5	249.1	251.1	275.4	250.2	284.8	249.8	152.6	102.6	190	190.8	327.7	245.3	271.5	293.5
	Max	mg/m3	150.7	363	471	406.7	457.3	363.7	367.3	574.3	756.7	358.3	468.7	128.3	912	309.3	417	340.7	402.7	317.3
	Exceeds daily ELV ?	[400 mg/m3]	N	N	N	N	N	N	N	N	N	N	N	N	N	N	N	N	N	N
CO (normalised)	Min	mg/m3	-4	-4	-4.4	-4	-4	-4.5	-4	-4.5	-4.5	-4.3	-4	1.5	1.9	2.3	2.7	2.5	1.5	1.5
	Ave	mg/m3	-4	-4	-4	-4	-3.8	-4	-4	-3.7	-3.1	-3.7	-1.2	1.8	2.6	2.9	3	2.8	2.2	1.6
	Max	mg/m3	0	0	0	0	0.7	0	0	1.2	1.8	0	1.9	2.5	3.6	3	3	3	2.6	2.1
	30m ELV exceedances	[100 mg/m3]	0	0	0	0	0	0	0	0	0	0	0	0	0	0	0	0	0	0
Exceeds daily ELV ?	[50 mg/m3]	N	N	N	N	N	N	N	N	N	N	N	N	N	N	N	N	N	N	
Particulates (normalised)	Min	mg/m3	0.4	0.4	0.4	0.4	0.3	0.4	0.4	0.3	0.3	0.3	0.4	0.4	0.3	0.4	0.4	0.4	0.4	0.5
	Ave	mg/m3	0.5	0.4	0.5	0.5	0.4	0.5	0.4	0.4	0.5	0.4	0.4	0.5	0.4	0.4	0.4	0.5	0.5	0.6
	Max	mg/m3	0.5	0.4	1.2	0.5	0.5	0.5	0.4	0.5	0.6	0.5	0.5	0.5	0.5	0.5	0.5	0.4	0.7	0.6
	30m ELV exceedances	[30 mg/m3]	0	0	0	0	0	0	0	0	0	0	0	0	0	0	0	0	0	0
Exceeds daily ELV ?	[10 mg/m3]	N	N	N	N	N	N	N	N	N	N	N	N	N	N	N	N	N	N	
VOC (normalised)	Min	mg/m3	0.1	0	0	0	0	0	0	0	0	0	0	0.5	0.3	0.5	0.5	0.5	0	0
	Ave	mg/m3	0.4	0.2	0.4	0.3	0	0	0	0	0.3	0.1	0.3	0.5	0.5	0.5	0.5	0.5	0.2	0.3
	Max	mg/m3	0.7	0.5	0.7	1	0.4	0.2	0	0.3	0.8	0.5	0.9	0.7	1.2	0.5	0.5	1	0.5	0.5
	30m ELV exceedances	[20 mg/m3]	0	0	0	0	0	0	0	0	0	0	0	0	0	0	0	0	0	0
Exceeds daily ELV ?	[10 mg/m3]	N	N	N	N	N	N	N	N	N	N	N	N	N	N	N	N	N	N	

NOTES

Invalid data points are not reported because the incinerator is not operated at any time whilst CEM equipment is being maintained or calibrated



Title: Reporting Incinerator CEM

Area: Manufacturing

Issue No.: 1

Ref:

Last printed: 06/05/2015

Date of Issue: 21/12/2006

Related Document: BU2357/AP3634

Created on: 21-12-2006

Page: 2 of 2

Incinerator Summary Report - December 2014

Day			19	20	21	22	23	24	25	26	27	28	29	30	31	TOTALS
Running time	Residue	h	24	24	24	24	24	24	23	24	24	22.5	24	24	24	715.5
	Gas	h	0	0	0	0	0	0	1	0	0	1	0	0	0	30
	Residue & gas	h	0	0	0	0	0	0	0	0	0	0	0	0	0	4.5
	Idle	h	0	0	0	0	0	0	0	0	0	0.5	0	0	0	3
Total flow	Residue	kg	7200.2	7199.7	7200	7358	8564	9600	9256.7	9601.5	9599.3	9050.3	9600.7	9600.2	9601.7	311.2 tonnes
	Gas	m3	0	0	0	0	0	0	127.3	0	0	179.5	0	0	0	4321 m3
	Air	m3	98141	96798	101094	106380	119824	127077	127054	119555	121676	123482	125156	127773	130274	4280435 m3
NOx (normalised)	Min	mg/m3	289	281	276	199.7	117.3	98	99.3	109	91.3	123	121.7	116.7	89	
	Ave	mg/m3	330.6	315.9	319.9	289.8	197.2	123.1	152.2	151.8	138.9	163.8	147.2	130.5	114.5	
	Max	mg/m3	372.3	348	362	337	292.3	153.7	360.7	477.7	165.3	417.7	165.3	142.3	128.7	
	Exceeds daily ELV ?	[400 mg/m3]	N	N	N	N	N	N	N	N	N	N	N	N	N	0 exceedances
CO (normalised)	Min	mg/m3	1.7	2.3	2	1.5	1.8	2.4	2.6	2.3	2.1	1.7	2	2.4	2.3	
	Ave	mg/m3	2.5	2.5	2.4	1.8	2.3	2.7	2.9	2.5	2.5	2.6	2.7	2.7	2.6	
	Max	mg/m3	2.7	2.6	2.5	2.4	2.6	3	3.3	2.9	2.8	3.2	3	3	3	
	30m ELV exceedances	[100 mg/m3]	0	0	0	0	0	0	0	0	0	0	0	0	0	0 exceedances
Exceeds daily ELV ?	[50 mg/m3]	N	N	N	N	N	N	N	N	N	N	N	N	N	0 exceedances	
Particulates (normalised)	Min	mg/m3	0.4	0.4	0.4	0.5	0.6	0.4	0.4	0.4	0.4	0.4	0.4	0.4	0.5	
	Ave	mg/m3	0.5	0.4	0.5	0.6	0.6	0.5	0.5	0.5	0.5	0.5	0.5	0.5	0.5	
	Max	mg/m3	0.6	0.4	0.6	0.7	0.7	0.7	0.5	0.6	0.5	0.6	0.5	0.5	0.5	
	30m ELV exceedances	[30 mg/m3]	0	0	0	0	0	0	0	0	0	0	0	0	0	0 exceedances
Exceeds daily ELV ?	[10 mg/m3]	N	N	N	N	N	N	N	N	N	N	N	N	N	0 exceedances	
VOC (normalised)	Min	mg/m3	0.5	0.5	0.5	0.5	0.5	0.5	0.5	0.5	0.5	0.5	0.5	0.5	0.5	
	Ave	mg/m3	0.5	0.5	0.5	0.5	0.5	0.5	0.5	0.5	0.5	0.5	0.5	0.5	0.5	
	Max	mg/m3	0.5	0.5	0.5	0.5	0.5	0.5	0.6	0.7	0.5	0.6	0.5	1	0.8	
	30m ELV exceedances	[20 mg/m3]	0	0	0	0	0	0	0	0	0	0	0	0	0	0 exceedances
Exceeds daily ELV ?	[10 mg/m3]	N	N	N	N	N	N	N	N	N	N	N	N	N	0 exceedances	

NOTES

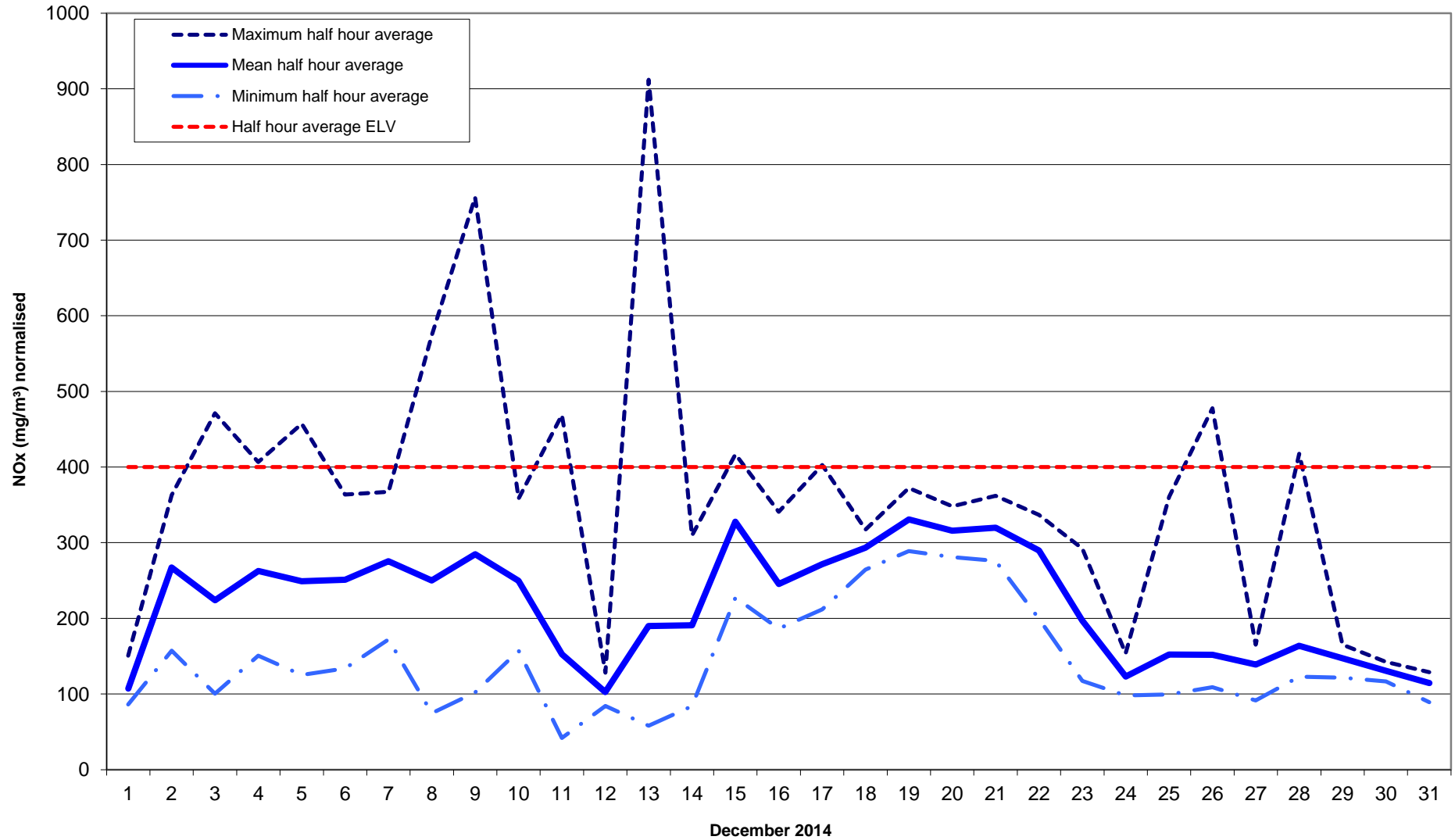
Invalid data points are not reported because the incinerator is not operated at any time whilst CEM equipment is being maintained or calibrated



Title: Reporting Incinerator CEM Oxides of Nitrogen
Ref:
Related Document: BU2357/AP3634 A7

Area: Manufacturing
Last printed: 06/05/2015
Created on: 21-12-2006

Issue No.: 1
Date of Issue: 21/12/2006
Page: 1 of 1





Title: Reporting Incinerator CEM Carbon Monoxide

Area: Manufacturing

Issue No.: 1

Ref:

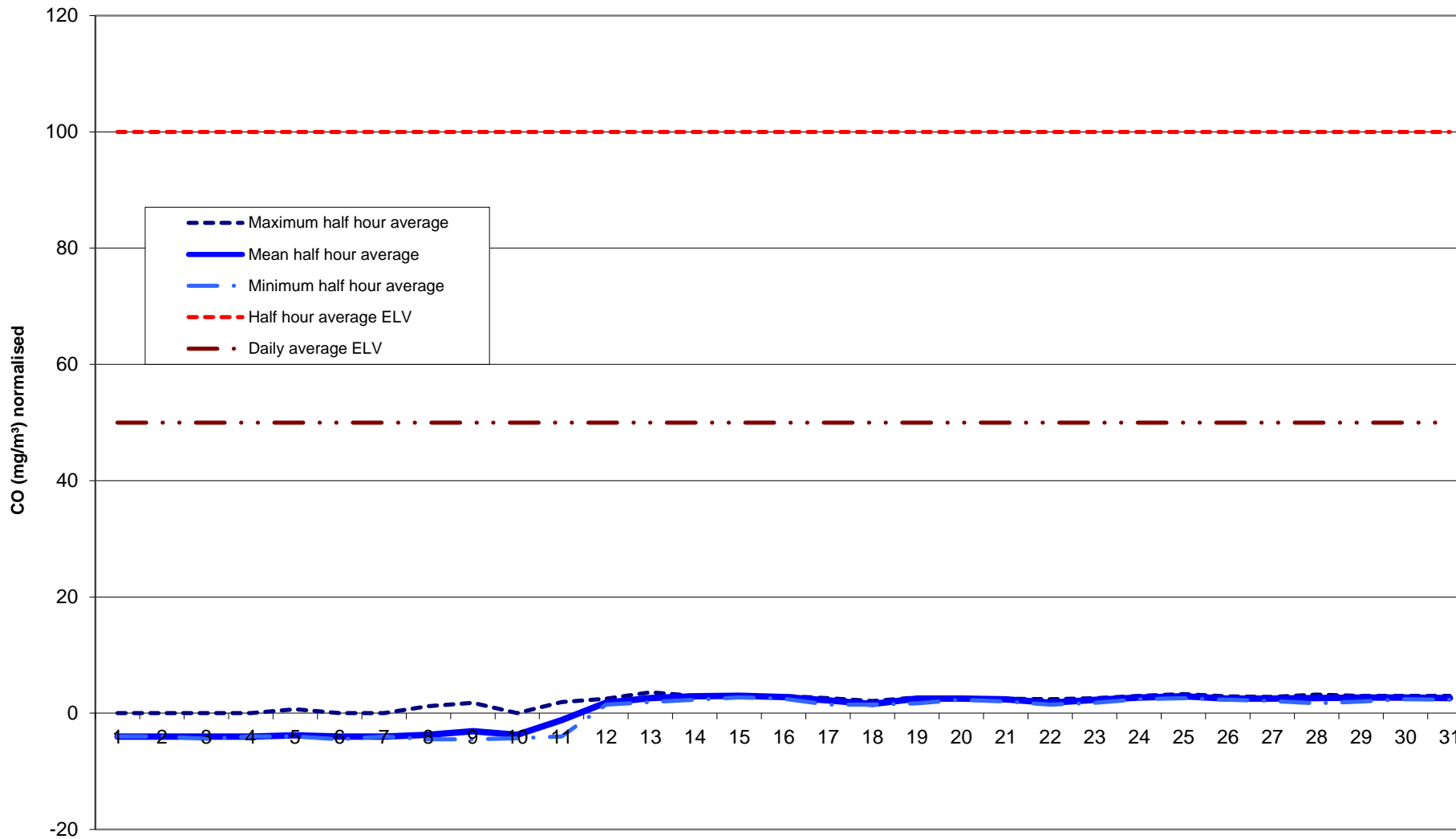
Last printed: 06/05/2015

Date of Issue: 21/12/2006

Related Document: BU2357/AP3634 A6

Created on: 21-12-2006

Page: 1 of 1



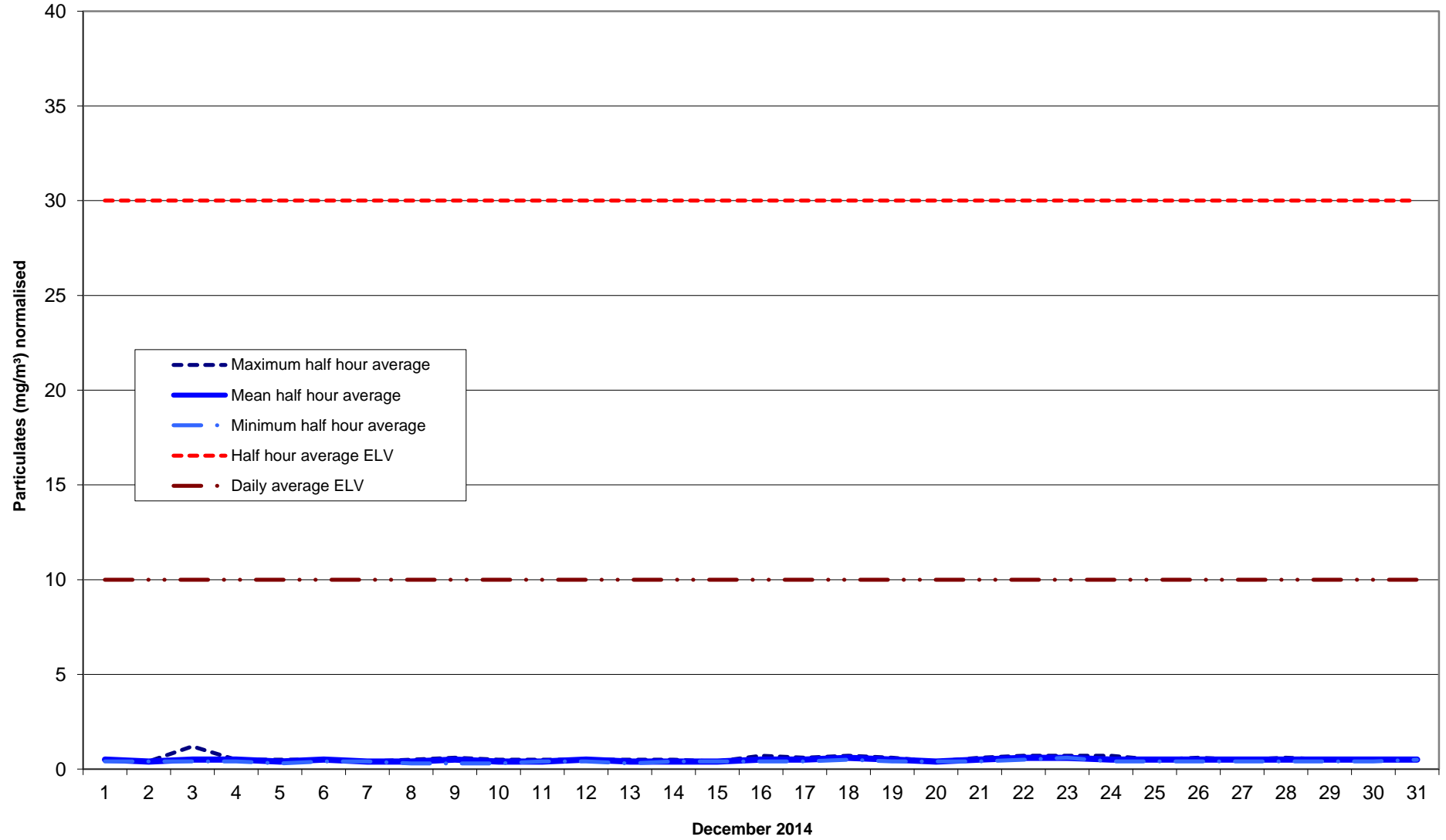
December 2014



Title: Reporting Incinerator CEM Particulates
Ref:
Related Document: BU2357/AP3634 A4

Area: Manufacturing
Last printed: 06/05/2015
Created on: 21-12-2006

Issue No.: 1
Date of Issue: 21/12/2006
Page: 1 of 1





Title: Reporting Incinerator CEM TOC
Ref:
Related Document: BU2357/AP3634 A5

Area: Manufacturing
Last printed: 06/05/2015
Created on: 21-12-2006

Issue No.: 1
Date of Issue: 21/12/2006
Page: 1 of 1

