



Title: Reporting Incinerator CEM

Area: Manufacturing

Issue No.: 1

Ref:

Last printed: 01/06/2015

Date of Issue: 21/12/2006

Related Document: BU2357/AP3634

Created on: 21-12-2006

Page: 1 of 2

Incinerator Summary Report - May 2015

Day			1	2	3	4	5	6	7	8	9	10	11	12	13	14	15	16	17	18
Running time	Residue	h	24	24	24	15	0	0	0	12.5	24	24	19	24	24	24	24	22.5	22.5	24
	Gas	h	0	0	0	1	0	0	8	6	0	0	5	0	0	0	0	1	1.5	0
	Residue & gas	h	0	0	0	0	0	0	0	1	0	0	0	0	0	0	0	0	0	0
	Idle	h	0	0	0	8	24	24	16	6.5	0	0	0	0	0	0	0	0.5	0	0
Total flow	Residue	kg	8335.5	7200.3	7200.7	4458.5	0	0	0	5015.8	10800.7	10800.5	8480.3	10801.2	10800.5	10801.7	10602	8971.2	9036	9635.3
	Gas	m3	0	0	0	208.2	0	0	1346.3	921.3	0	0	806	0	0	0	0	212.2	209.8	0
	Air	m3	103922	81692	93333	159967	182124	37623	108447	102617	140851	137558	128147	125916	125747	124820	132039	128648	124822	119544
NOx (normalised)	Min	mg/m3	155.7	228.3	213.3	176.3				113	122	122.3	66.3	117	112.3	134.3	177.7	245.3	276.3	114.3
	Ave	mg/m3	223.2	300	251.2	236.4				357.8	164.2	176.3	115.1	132.9	134.7	157.4	217.4	317.9	313.9	258
	Max	mg/m3	372	352.7	292.3	260.3				1002.3	201	201.3	362.3	177	154.7	190.3	294	444.3	471.7	351.7
	Exceeds daily ELV ?	[400 mg/m3]	N	N	N	N				N	N	N	N	N	N	N	N	N	N	N
CO (normalised)	Min	mg/m3	-5.2	-5.3	-5.5	-5.5				-5	-5.5	-5.5	-5.5	-5.5	-5.5	-5.5	-5.5	-5.5	-5.5	-5.4
	Ave	mg/m3	-4.4	-4.6	-4.6	-5.2				-4.3	-4.5	-5.2	-5.2	-5.4	-5.5	-4.6	-4.7	-5.2	-4.8	-4.3
	Max	mg/m3	0	0	0	0.2				0	0	0	0	0	0	0	0	0	0	0
	30m ELV exceedances	[100 mg/m3]	0	0	0	0				0	0	0	0	0	0	0	0	0	0	0
Exceeds daily ELV ?	[50 mg/m3]	N	N	N	N				N	N	N	N	N	N	N	N	N	N	N	
Particulates (normalised)	Min	mg/m3	0.6	0.4	0.4	0.6				0.3	0.6	0.7	0.4	0.4	0.8	0.6	0.6	0.5	0.7	0.7
	Ave	mg/m3	0.6	0.5	0.5	0.7				0.6	0.6	0.7	0.7	0.7	0.8	0.6	0.6	0.8	0.7	0.7
	Max	mg/m3	0.7	0.6	0.7	0.8				0.7	0.7	0.8	0.8	0.8	0.9	0.8	0.8	0.8	0.8	0.8
	30m ELV exceedances	[30 mg/m3]	0	0	0	0				0	0	0	0	0	0	0	0	0	0	0
Exceeds daily ELV ?	[10 mg/m3]	N	N	N	N				N	N	N	N	N	N	N	N	N	N	N	
VOC (normalised)	Min	mg/m3	0.5	0.5	0.5	0.5				0.3	0.5	0.5	0.4	0.5	0.5	0.5	0.5	0.4	0.5	0.5
	Ave	mg/m3	0.6	0.5	0.5	0.5				0.6	0.5	0.5	0.5	0.5	0.5	0.5	0.5	0.5	0.5	0.5
	Max	mg/m3	1	0.5	0.5	1				1	0.8	0.9	0.5	0.5	0.5	0.5	0.5	0.5	0.5	0.5
	30m ELV exceedances	[20 mg/m3]	0	0	0	0				0	0	0	0	0	0	0	0	0	0	0
Exceeds daily ELV ?	[10 mg/m3]	N	N	N	N				N	N	N	N	N	N	N	N	N	N	N	

NOTES

Invalid data points are not reported because the incinerator is not operated at any time whilst CEM equipment is being maintained or calibrated



Title: Reporting Incinerator CEM

Area: Manufacturing

Issue No.: 1

Ref:

Last printed: 01/06/2015

Date of Issue: 21/12/2006

Related Document: BU2357/AP3634

Created on: 21-12-2006

Page: 2 of 2

Incinerator Summary Report - May 2015

Day			19	20	21	22	23	24	25	26	27	28	29	30	31	TOTALS
Running time	Residue	h	24	22	23	16.5	22	22	23	18.5	23	24	22	23	24	618.5
	Gas	h	0	2	1.5	9	2.5	2.5	1	8.5	1	0	2	1	0	53.5
	Residue & gas	h	0	0.5	0.5	2	0.5	1	0	3	0	0	0	0.5	0	9
	Idle	h	0	0.5	0	0.5	0	0.5	0	0	0	0	0	0.5	0	81
Total flow	Residue	kg	10965.3	9875.5	10596.8	7049.5	10274.3	11158.7	11475.5	7980.5	10389.8	10800.3	9936.3	10226	10800.5	264.5 tonnes
	Gas	m3	0	307.5	185.8	1104.2	290.8	385.7	148.2	1079.2	135	0	278.3	136.2	0	7755 m3
	Air	m3	136239	137460	134212	131795	120527	140475	137686	136938	136609	139179	134312	136690	138004	3917941 m3
NOx (normalised)	Min	mg/m3	103	84.7	167	98	39	39.3	169.7	74	152	228.7	173.7	171.3	129.7	
	Ave	mg/m3	270.5	262.2	239.9	167.3	133.7	109	247.8	312.3	276.8	275.4	236.9	215.9	188	
	Max	mg/m3	586.7	505	377	510	447.7	214.7	487.3	730.3	416.7	313	467	409.3	263.3	
	Exceeds daily ELV ?	[400 mg/m3]	N	N	N	N	N	N	N	N	N	N	N	N	N	0 exceedances
CO (normalised)	Min	mg/m3	-4.5	-4.9	-5.5	-5.5	-5.4	-5.5	-5.5	-5.5	-4.5	-4.5	-4.5	-4.5	-4.5	
	Ave	mg/m3	-4.1	-3.7	-5.1	-4.9	-4.3	-4	-4.4	-3.8	-4.3	-4.5	-4.4	-4.3	-4.4	
	Max	mg/m3	0	13.9	0	0.1	0	7.4	0	1.4	0.4	0	0	0	0	
	30m ELV exceedances	[100 mg/m3]	0	0	0	0	0	0	0	0	0	0	0	0	0	0 exceedances
Exceeds daily ELV ?	[50 mg/m3]	N	N	N	N	N	N	N	N	N	N	N	N	N	0 exceedances	
Particulates (normalised)	Min	mg/m3	0.6	0.4	0.7	0.4	0.2	0.3	0.6	0.5	0.6	0.7	0.7	0.6	0.7	
	Ave	mg/m3	0.6	0.6	0.7	0.8	0.6	0.7	0.8	0.8	0.8	0.7	0.7	0.7	0.7	
	Max	mg/m3	0.7	0.8	0.9	0.9	0.8	0.8	0.8	0.9	0.8	0.8	0.8	0.9	0.8	
	30m ELV exceedances	[30 mg/m3]	0	0	0	0	0	0	0	0	0	0	0	0	0	0 exceedances
Exceeds daily ELV ?	[10 mg/m3]	N	N	N	N	N	N	N	N	N	N	N	N	N	0 exceedances	
VOC (normalised)	Min	mg/m3	0.5	0.3	0.4	0.2	0.1	0.4	0.4	0.3	0.4	0.5	0.5	0.4	0.5	
	Ave	mg/m3	0.5	0.5	0.5	0.5	0.5	0.5	0.5	0.5	0.5	0.5	0.5	0.6	0.5	
	Max	mg/m3	0.5	2.1	0.5	0.6	0.5	1.1	0.5	0.6	0.6	0.5	0.7	1	1	
	30m ELV exceedances	[20 mg/m3]	0	0	0	0	0	0	0	0	0	0	0	0	0	0 exceedances
Exceeds daily ELV ?	[10 mg/m3]	N	N	N	N	N	N	N	N	N	N	N	N	N	0 exceedances	

NOTES

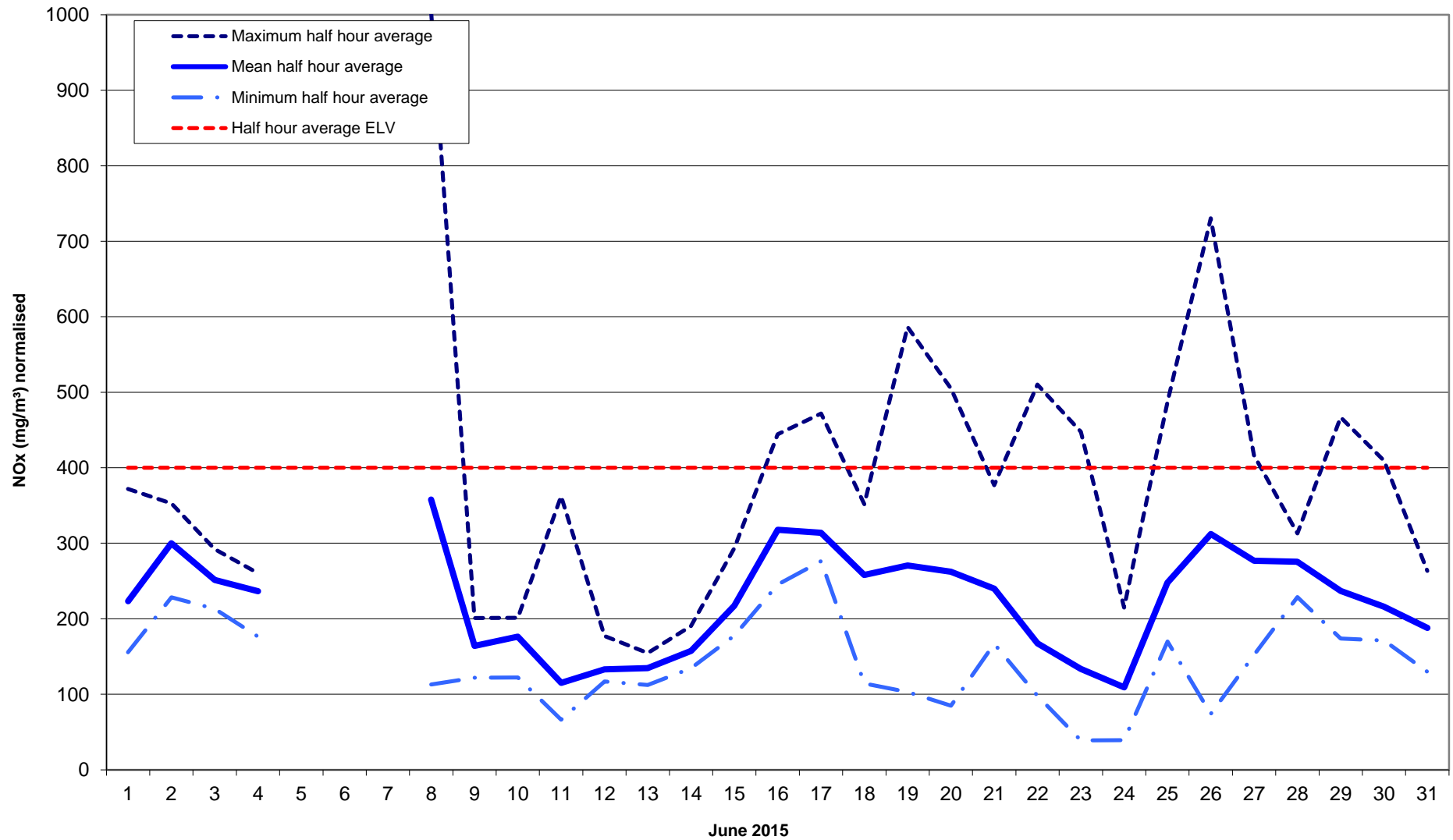
Invalid data points are not reported because the incinerator is not operated at any time whilst CEM equipment is being maintained or calibrated



Title: Reporting Incinerator CEM Oxides of Nitrogen
Ref:
Related Document: BU2357/AP3634 A7

Area: Manufacturing
Last printed: 01/06/2015
Created on: 21-12-2006

Issue No.: 1
Date of Issue: 21/12/2006
Page: 1 of 1





Title: Reporting Incinerator CEM Carbon Monoxide

Area: Manufacturing

Issue No.: 1

Ref:

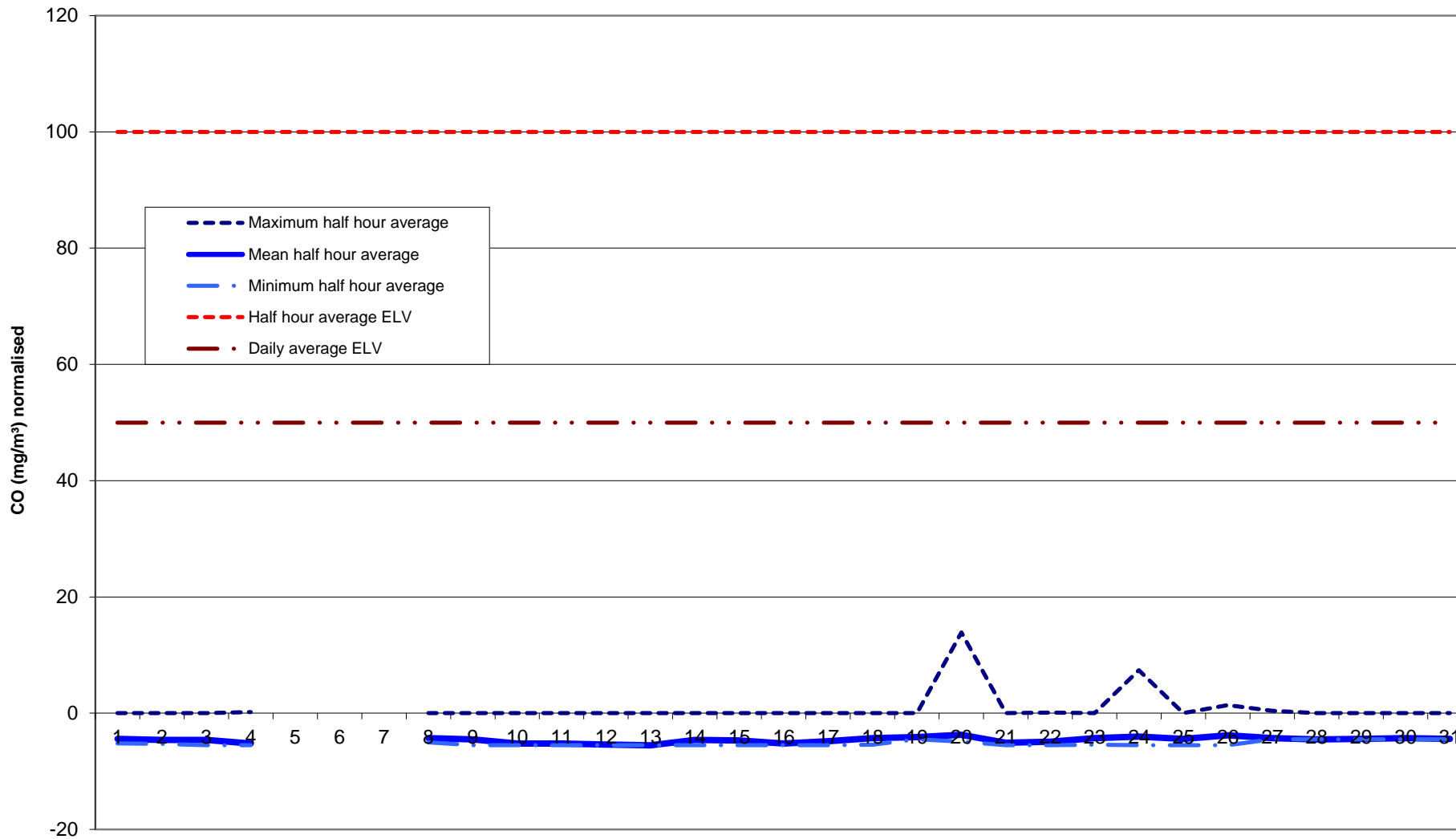
Last printed: 01/06/2015

Date of Issue: 21/12/2006

Related Document: BU2357/AP3634 A6

Created on: 21-12-2006

Page: 1 of 1



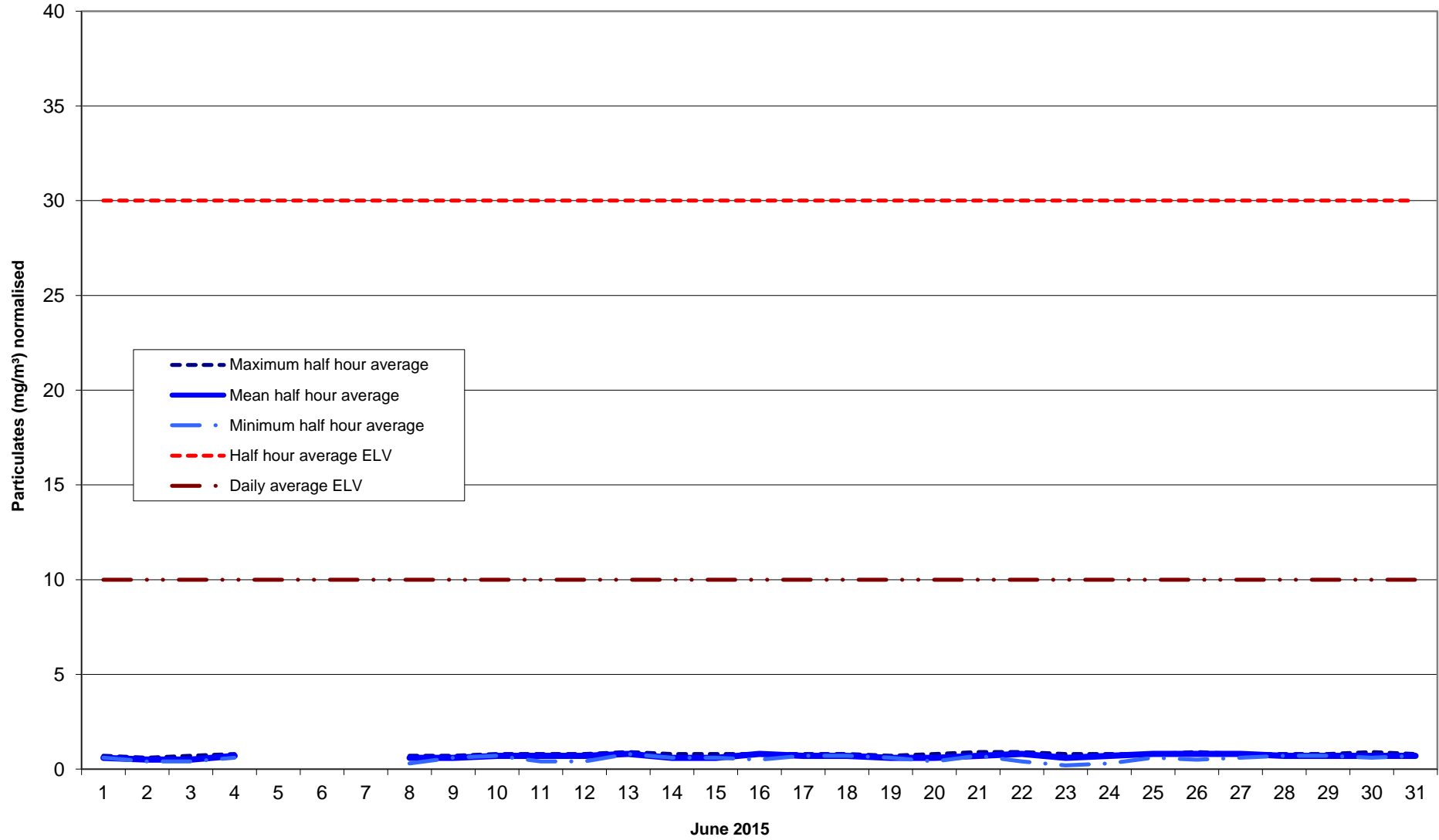
June 2015



Title: Reporting Incinerator CEM Particulates
Ref:
Related Document: BU2357/AP3634 A4

Area: Manufacturing
Last printed: 01/06/2015
Created on: 21-12-2006

Issue No.: 1
Date of Issue: 21/12/2006
Page: 1 of 1





Title: Reporting Incinerator CEM TOC
Ref:
Related Document: BU2357/AP3634 A5

Area: Manufacturing
Last printed: 01/06/2015
Created on: 21-12-2006

Issue No.: 1
Date of Issue: 21/12/2006
Page: 1 of 1

