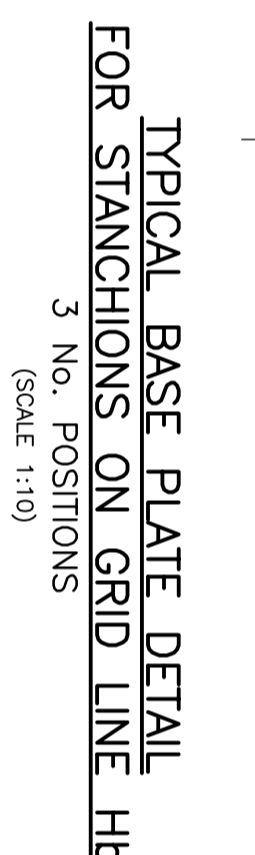
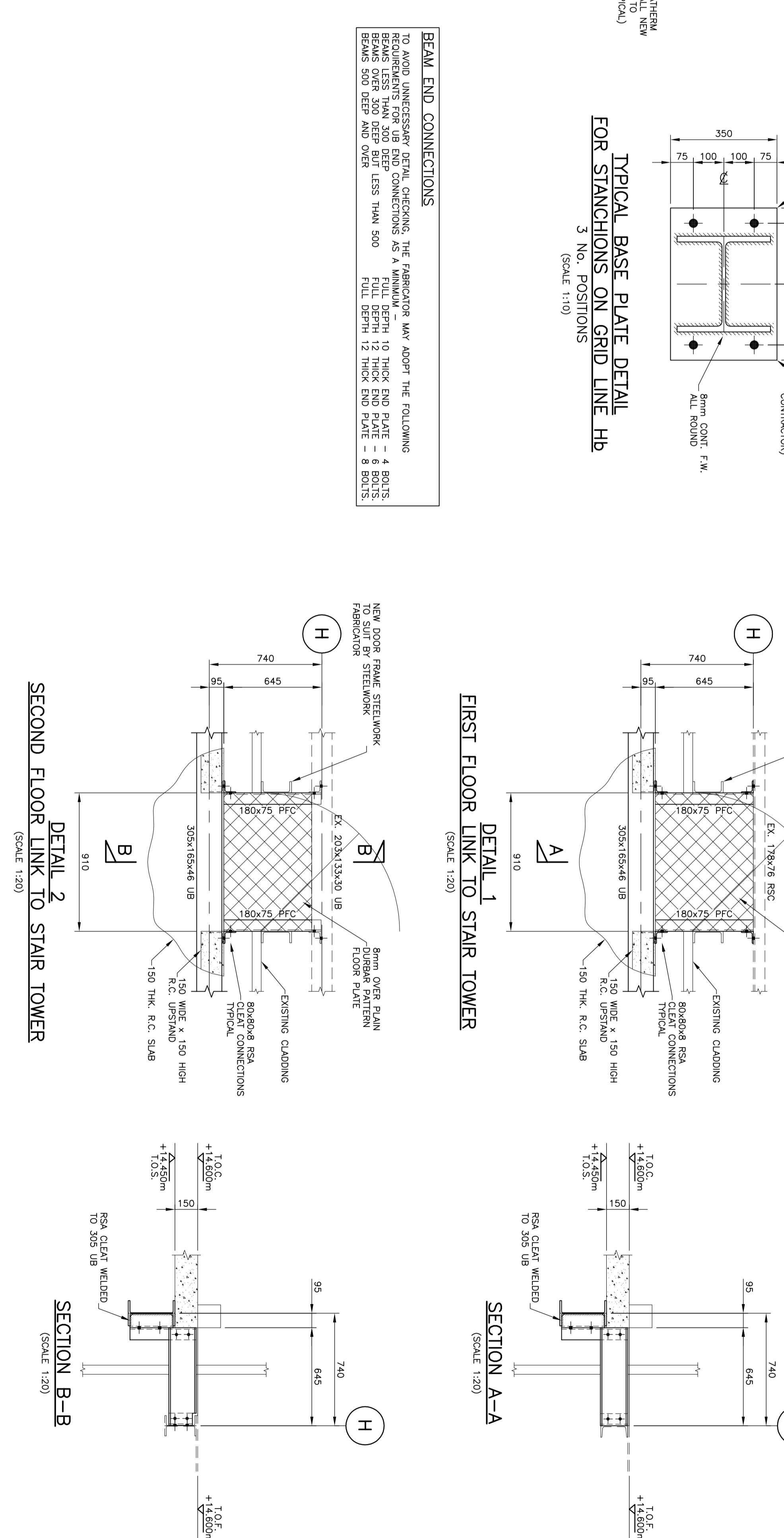
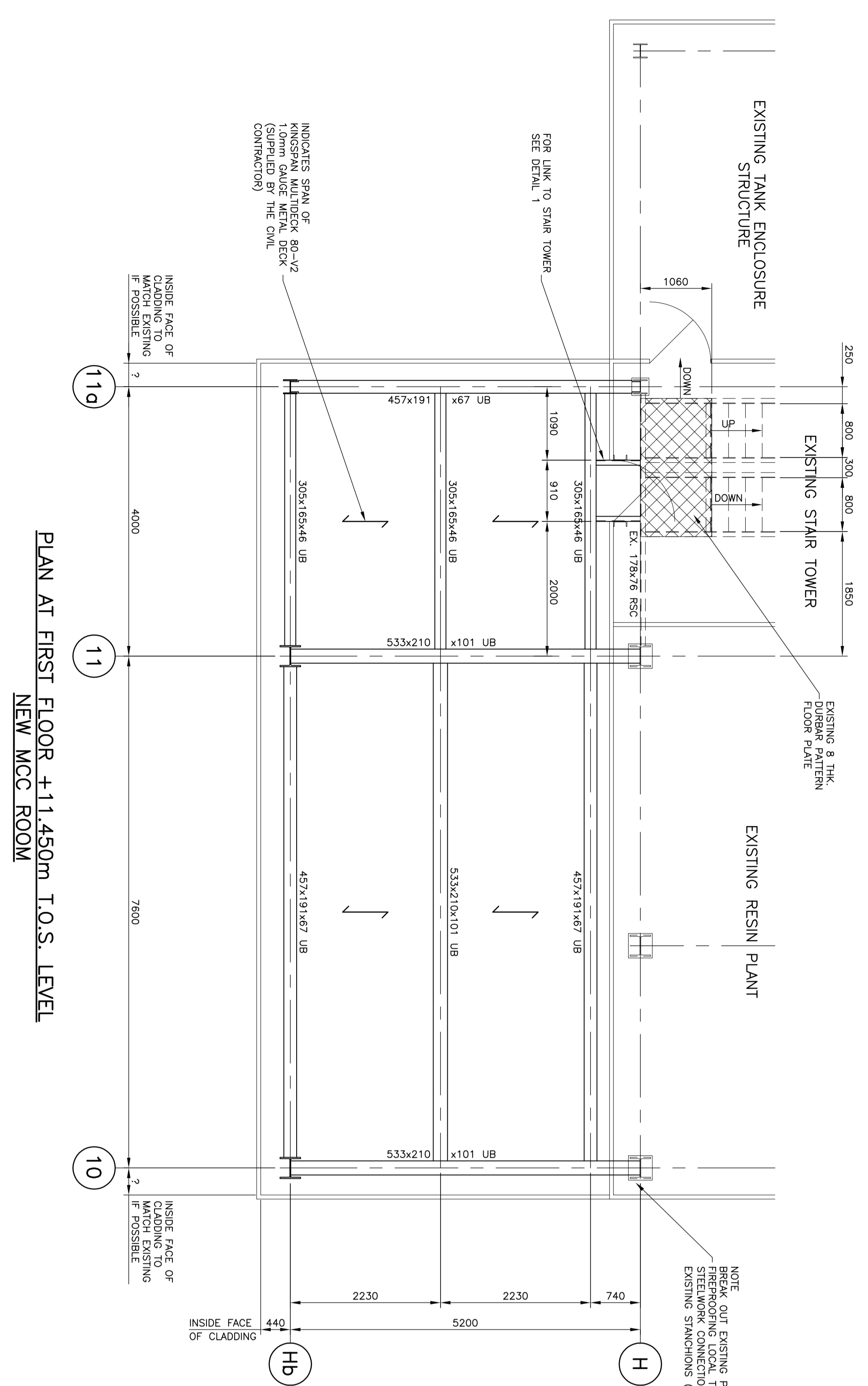
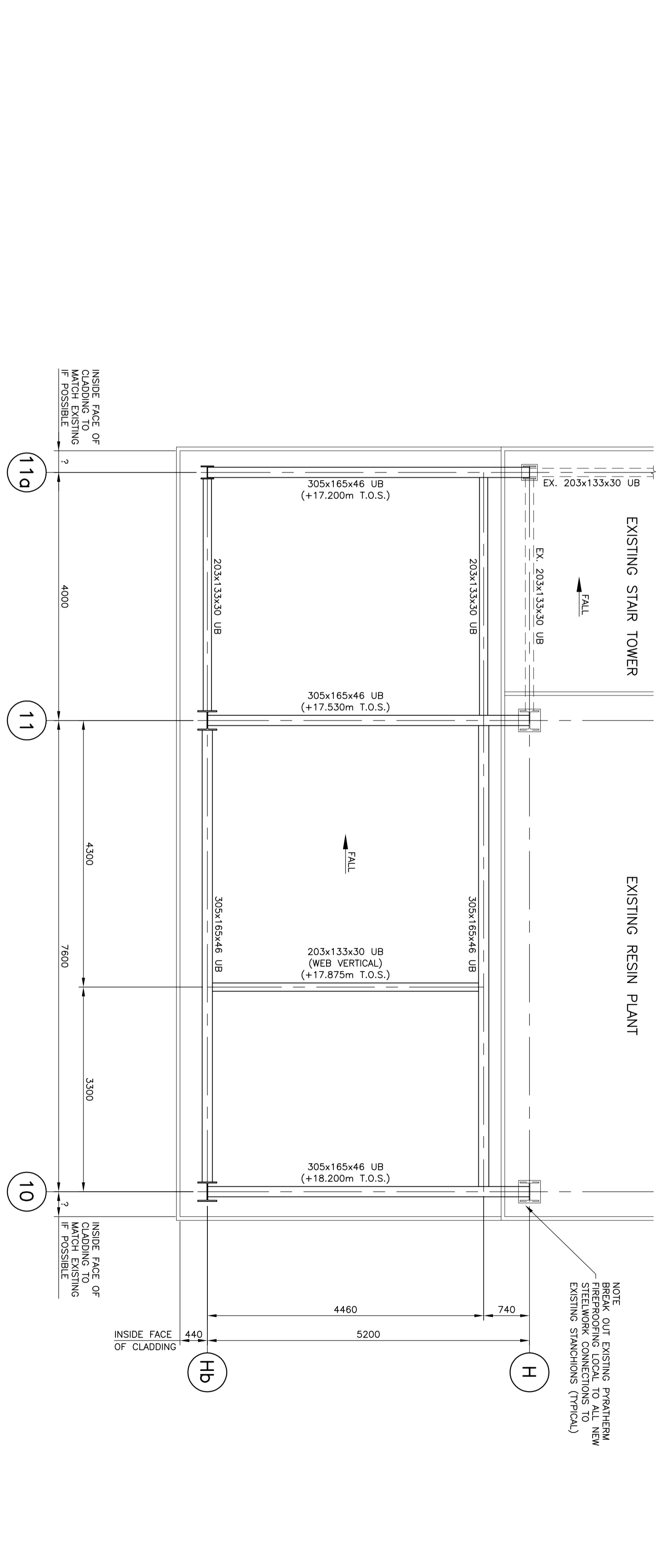
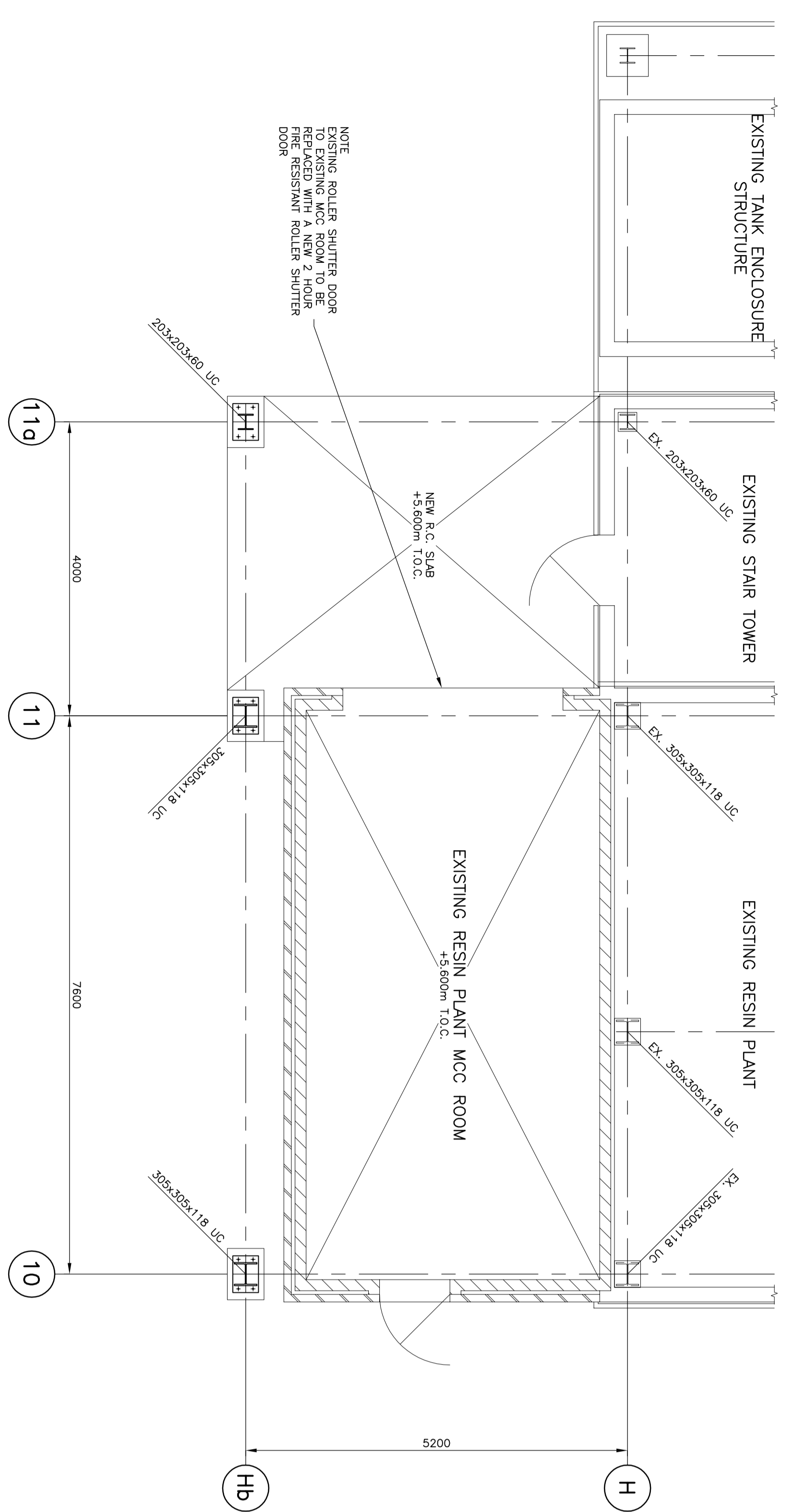
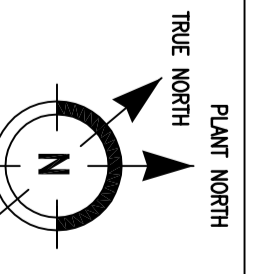


REFERENCE DRAWINGS

- 4349-01-5002 CONTROL ROOM EXTENSION - STEELWORK ELEVATIONS
- 4349-01-5003 CONTROL ROOM EXTENSION - CLADDING STEELWORK

NOTES

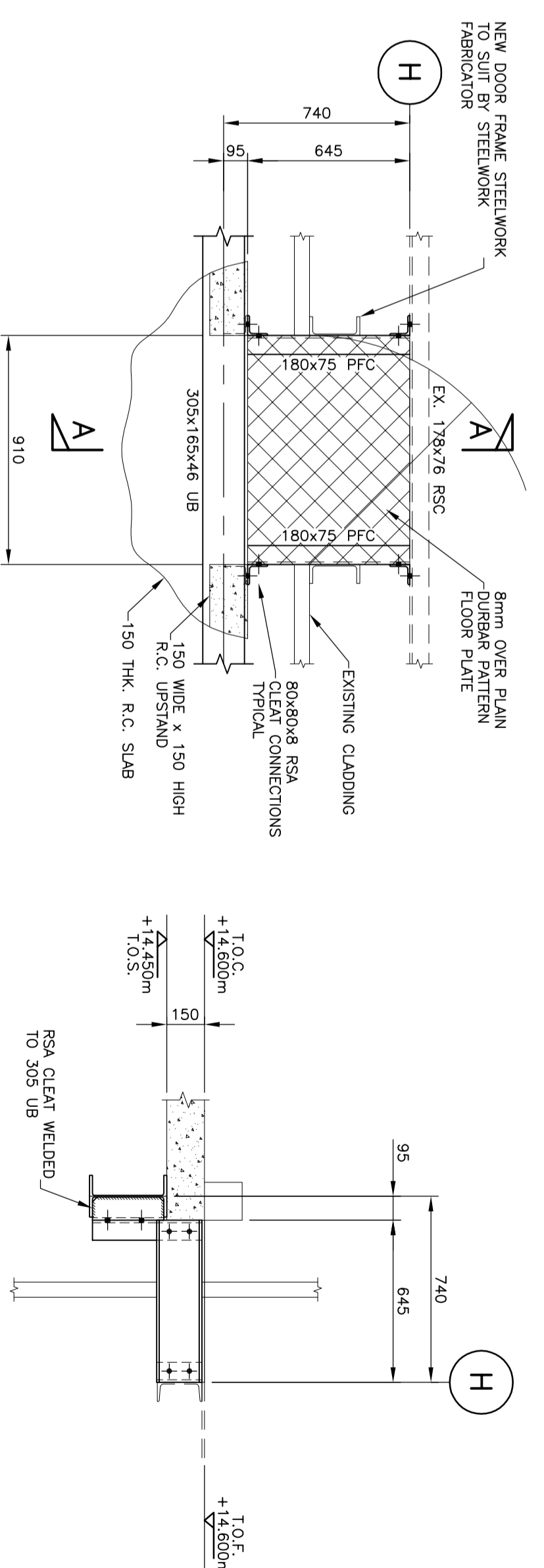
**ALL RELEVANT DIMENSIONS, LEVELS SETTING OUT POINTS AND DETAILS TO BE CHECKED ON SITE BY THE STEELWORK FABRICATOR PRIOR TO FABRICATION. WHEREVER POSSIBLE, THE FABRICATOR SHOULD ADOPT ALL DETAILS AND PRACTICES THAT WOULD FACILITATE CHANGES ON SITE.**



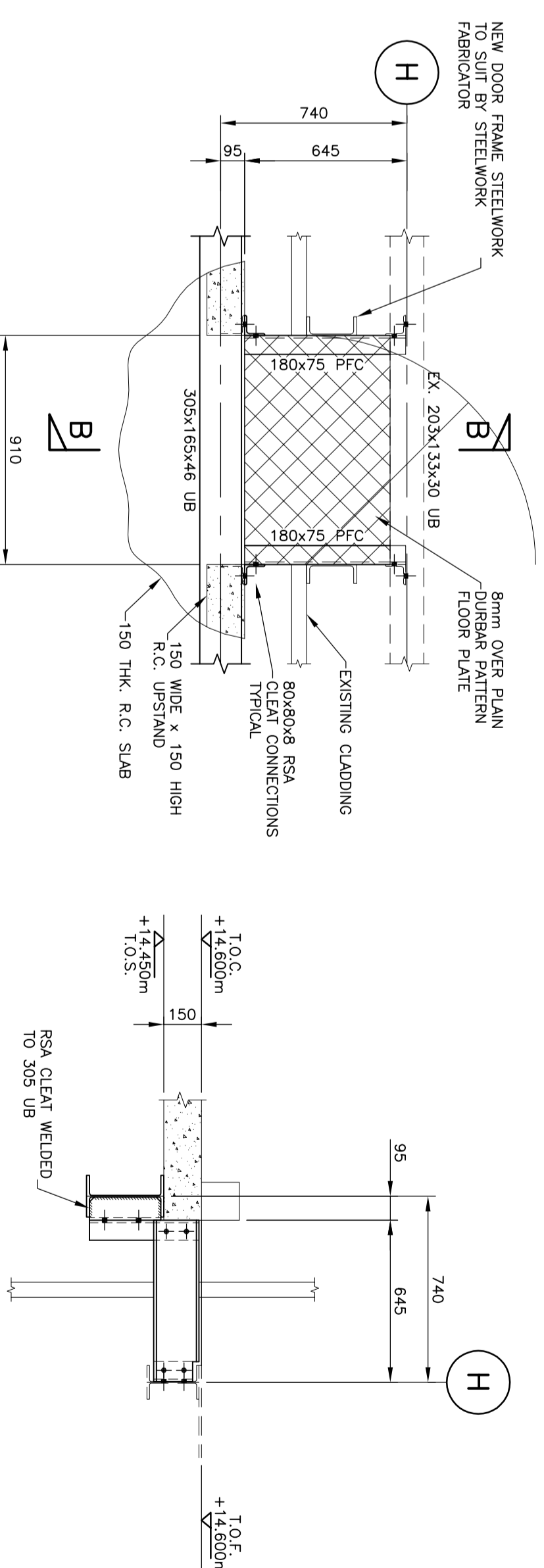
**BEAM END CONNECTIONS**

TO AVOID UNNECESSARY SPALLS, THE FABRICATOR MAY ADOPT THE FOLLOWING REQUIREMENTS FOR THE BEAM END CONNECTIONS AS A MINIMUM - 4 BOLTS PER BEAM END, 2 BOLTS PER END OF EACH BEAM, FULL DEPTH 12 THICK END PLATE - 8 BOLTS PER END OF EACH BEAM, FULL DEPTH 12 THICK END PLATE - 8 BOLTS PER END OF EACH BEAM, FULL DEPTH 12 THICK END PLATE - 8 BOLTS PER END OF EACH BEAM

DETAIL 1 FIRST FLOOR LINK TO STAIR TOWER (SCALE 1:20)



DETAIL 2 SECOND FLOOR LINK TO STAIR TOWER (SCALE 1:20)



**ISSUED FOR CONSTRUCTION**

**vaispar**

Vaispar (UK) Corporation, Dareside, Fintonaire, CH4 2WN, United Kingdom.

**HADEN FREEMAN LIMITED**

Freeman House, Cleburn Street, Dutton, Manchester, M14 3SU, Telephone: +44 (0) 161 304 5000 Fax: +44 (0) 161 304 9301 Email: haden@hadenfreeman.com www.hadenfreeman.com

CLIENT	VALSIPAR (UK) CORPORATION
PROJECT	RESIN PLANT CONTROL ROOM
TITLE	NEW CONTROL ROOM EXTENSION STEELWORK PLANS
SCALE	1:50
REV	AO
DWG.	4349-01-50201
REV	1