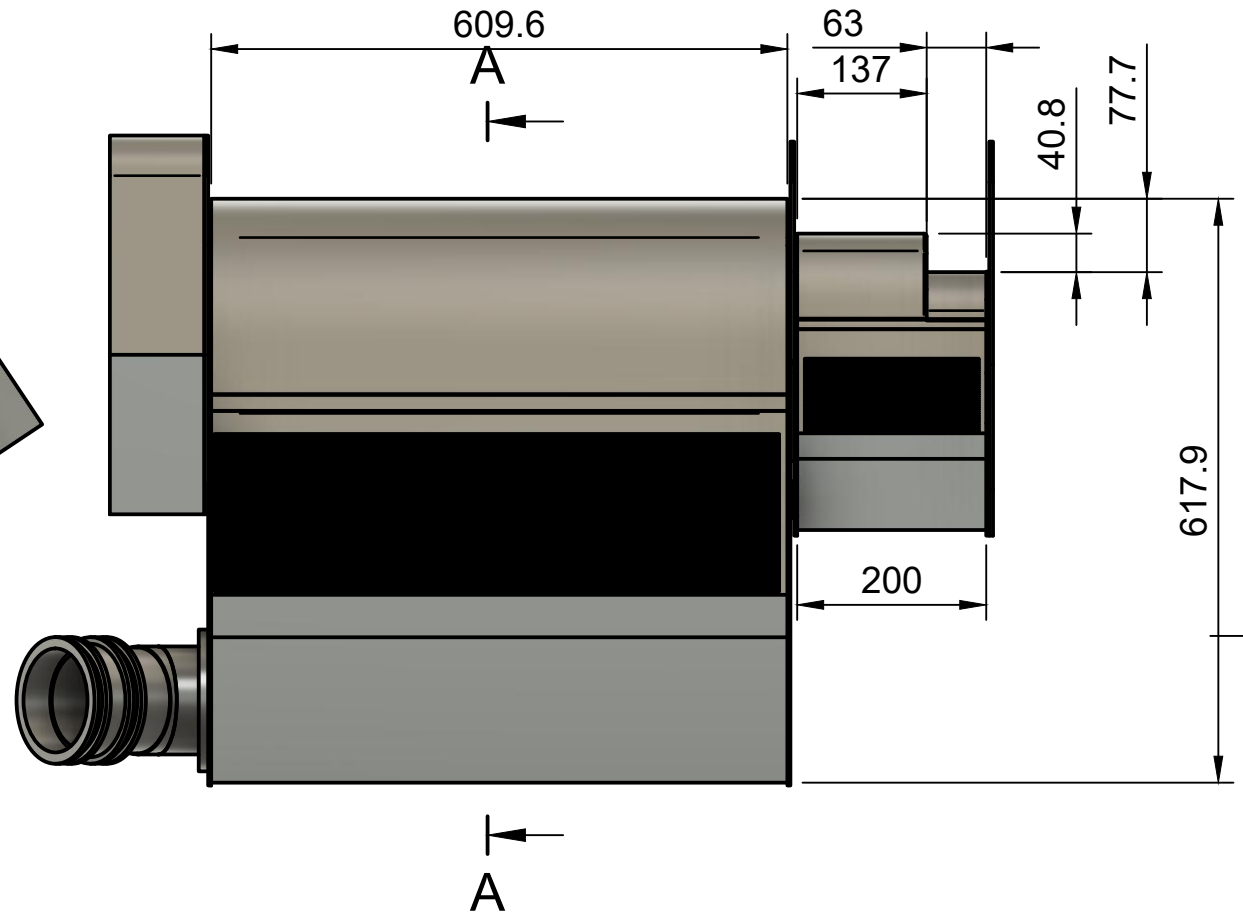
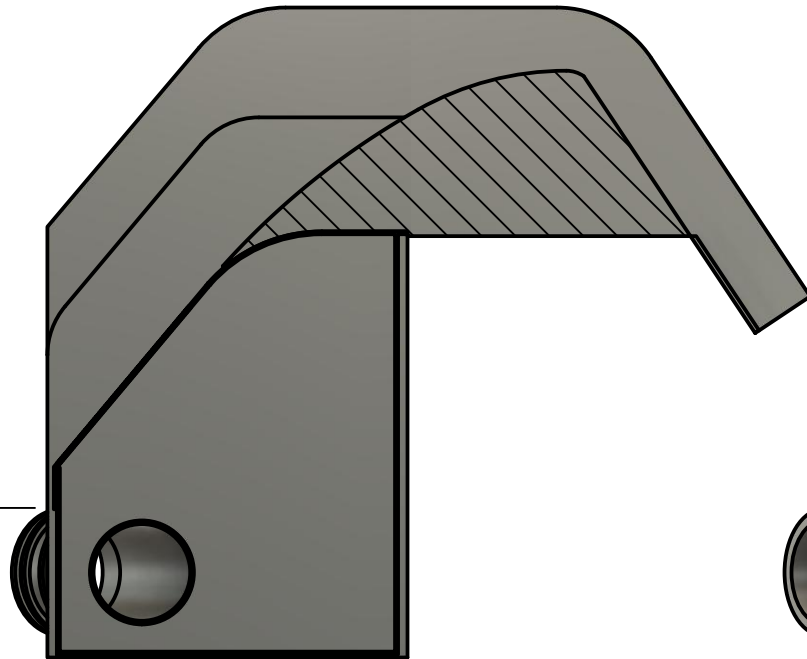



A-A (1:8)

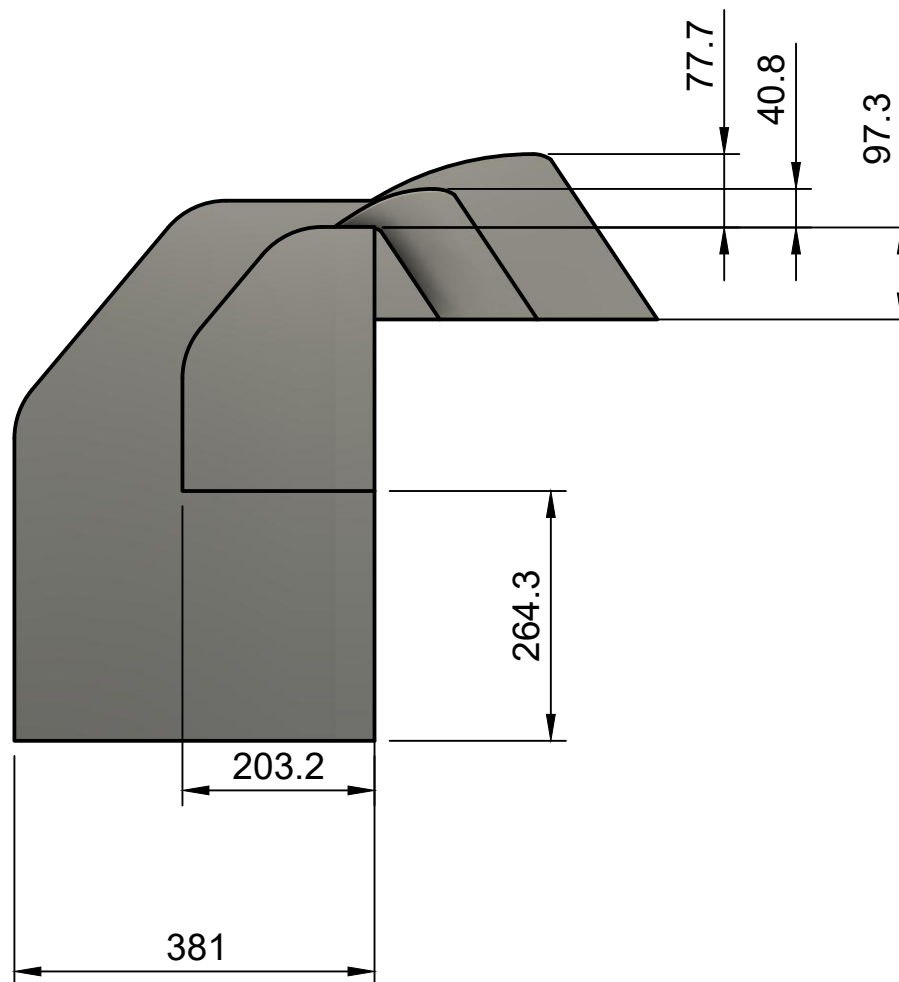



Fairings are attached to screen boxes by internal bolts (accessible by removing the screen element).
Boxes and fairings are bolted to bedrock. Bolt heads will not protrude into the stream.

Material: 304L stainless steel, TIG welded, 3.2 mm thick.

Project: Hafod y Rhedrwydd micro-hydro		Title: Coanda screen assembly		Projection 
Drawing No. HyR_181006C		Designer: Dr. R.W.Moss	Units: mm	Paper size A4
Sheet 1/2	Sheet title Fairing widths and crest heights	Rev. 1	Default scale 1:8	
		Revision date 02/11/2018		

Side view showing ogee fairings.
Plunge basin omitted for clarity.



Project: Hafod y Rhedrydd micro-hydro		Title: Coanda screen assembly		Projection 	
				Paper size A4	
Drawing No. HyR_181006C		Designer: Dr. R.W.Moss		Units: mm	Default scale 1:8
Sheet 2/2	Sheet title Fairing widths and crest heights			Rev. 1	Revision date 02/11/2018