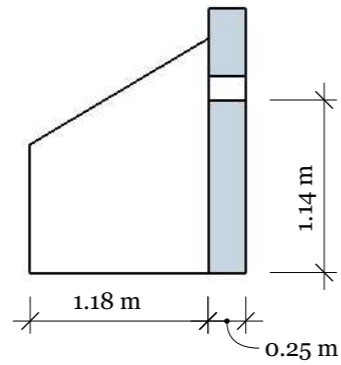
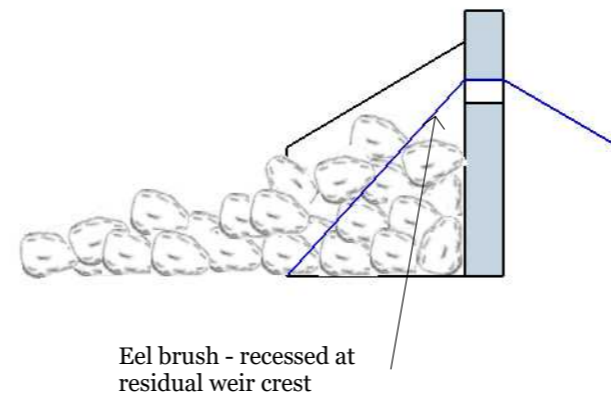


Dimensions and Fish Pass Details

Side View A-A excluding fish pass



Side View A-A including fish pass



NOTES:

Fish pass to be created from large stone which will be set into mass fill concrete resulting in a firm structure

The rocky ramp will resemble natural rapids with each step providing a fall of between 150mm and 300mm (indicative dimensions provided)

Edges will be shaped to avoid any straight edges

Drawing no:
Dimensions and Fish Pass Details V2.4

Screen Width 2000mm

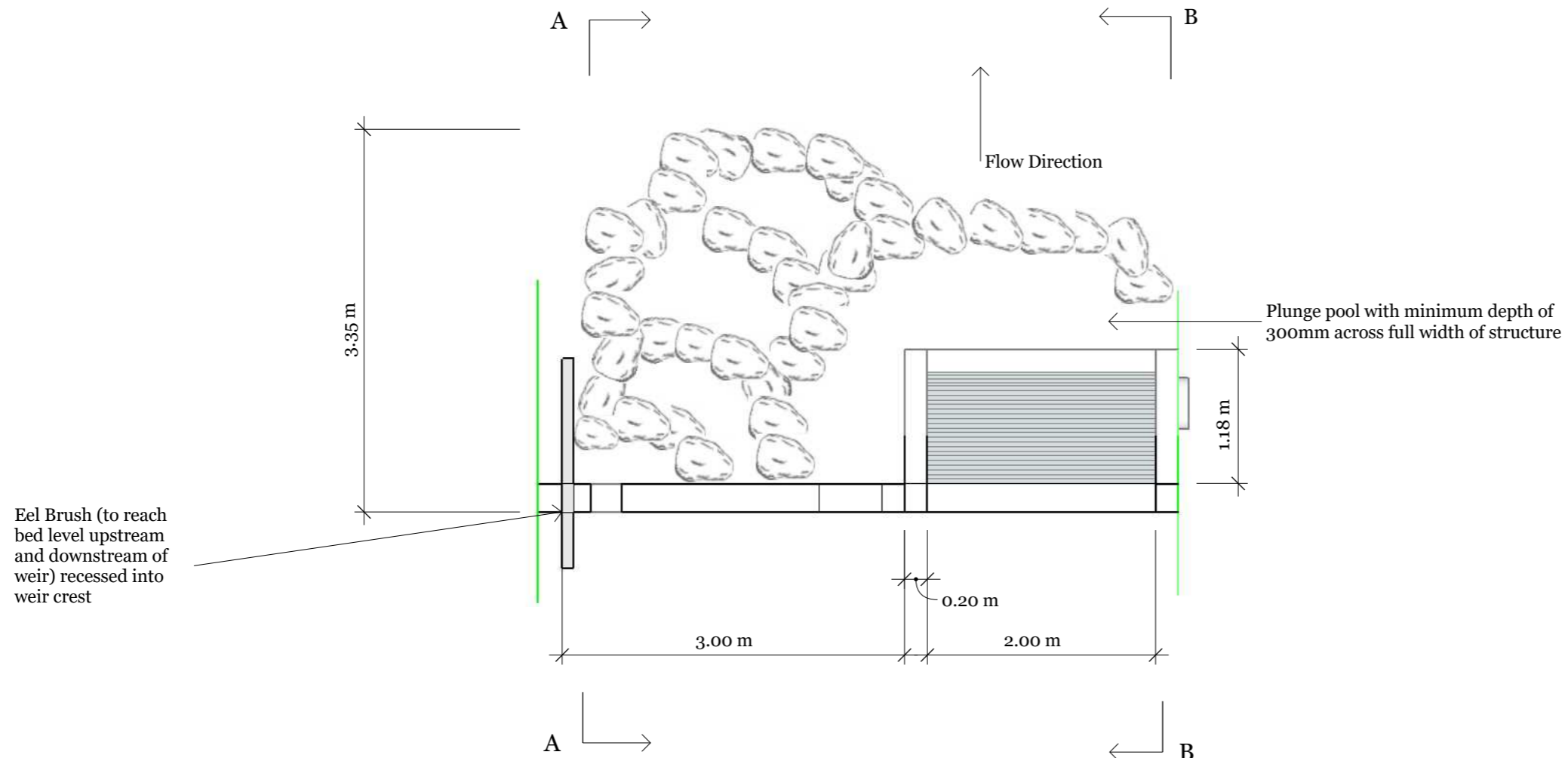
Scale 1 : 50 @A3

PROJECT
Celynog Uchaf

ISSUE
04/02/2019

RE-ISSUE

DESCRIPTION
Intake Dimension and Fish Pass



A0.1