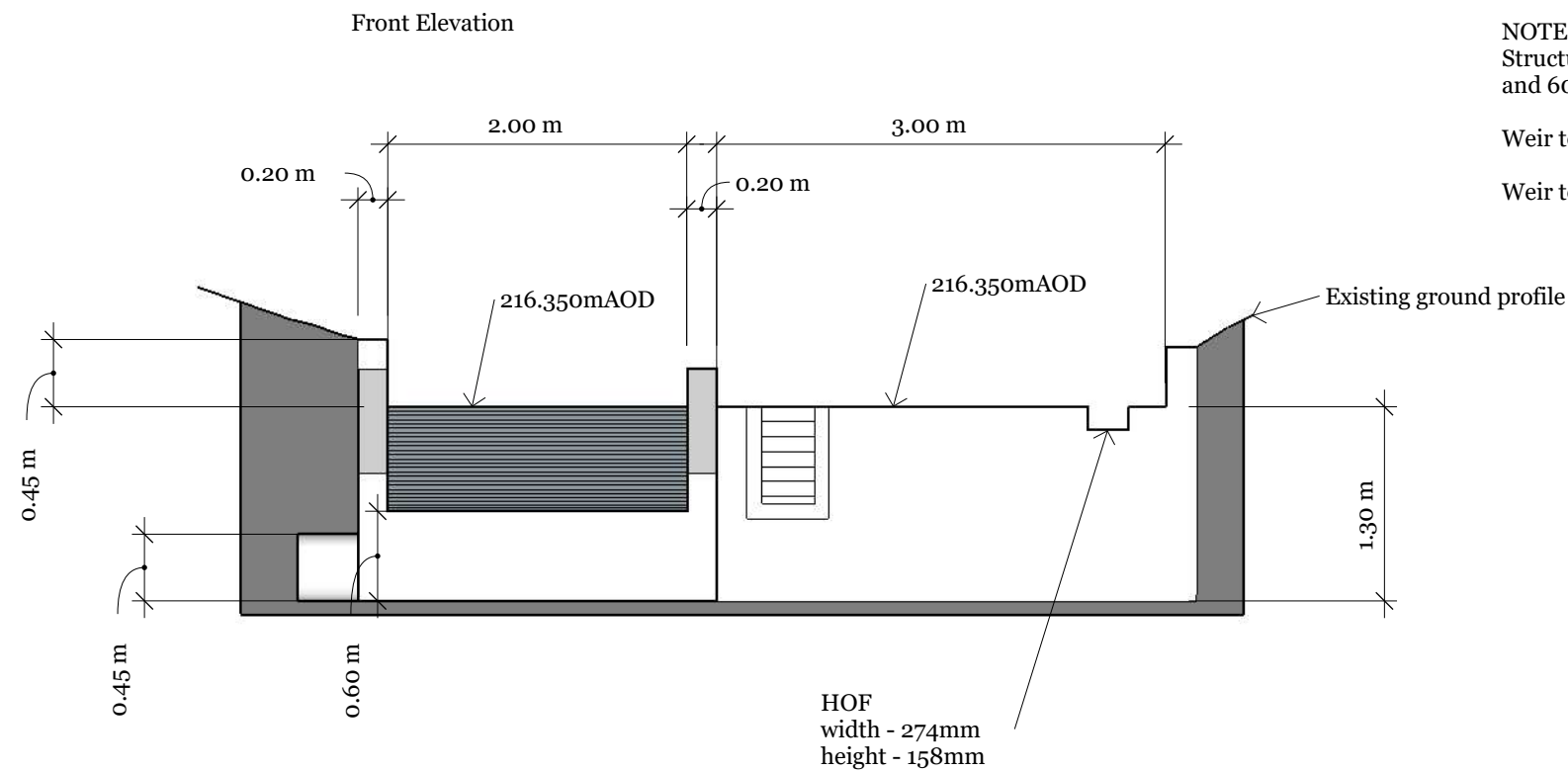


Intake Dimensions Celynog Uchaf



NOTES:  
Structure designed to allow 40% abstraction  
and 60% residual

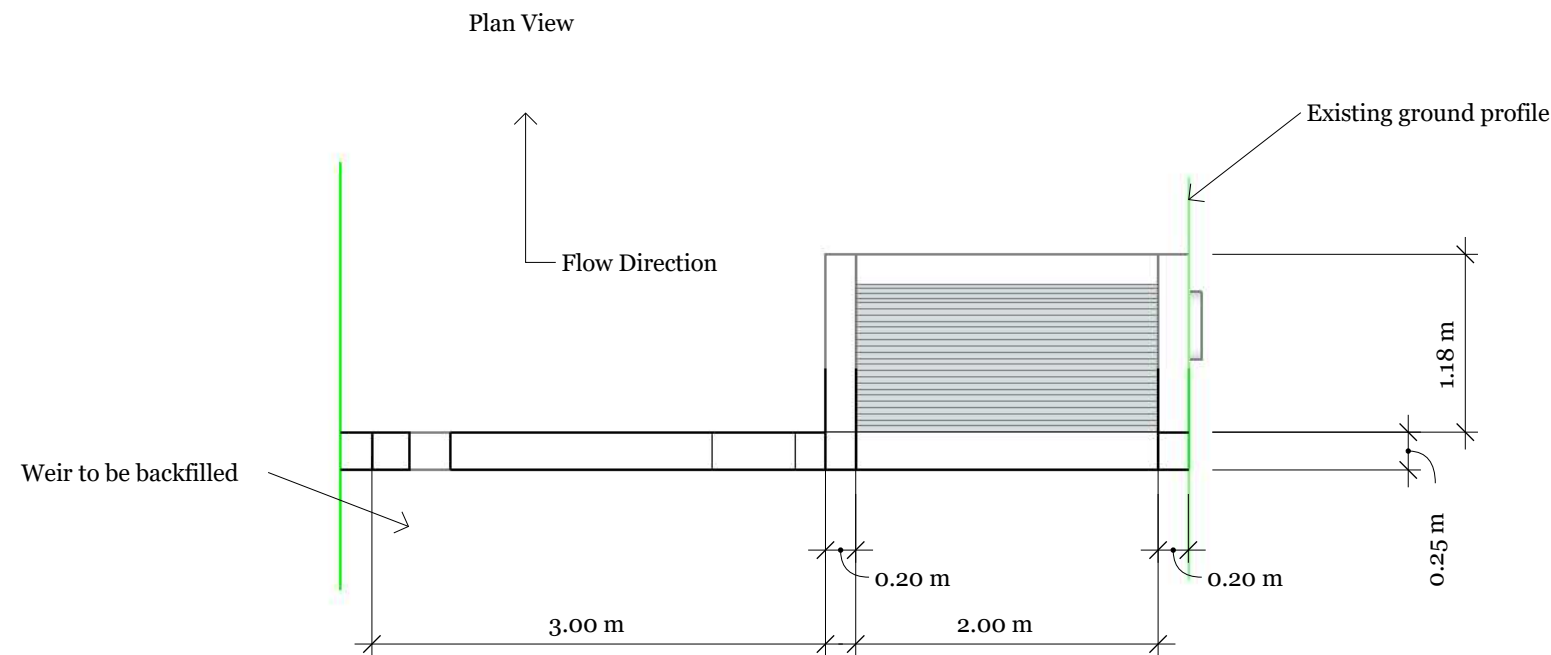
Weir to be faced with local stone

Weir to be constructed from re-inforced concrete

Drawing no:  
Intake Dimensions Celynog Uchaf V2.4

Screen Width 2000mm

Scale 1 : 50 @A3



PROJECT  
Celynog Uchaf

ISSUE  
04/02/2019

RE-ISSUE

DESCRIPTION  
Dimensions