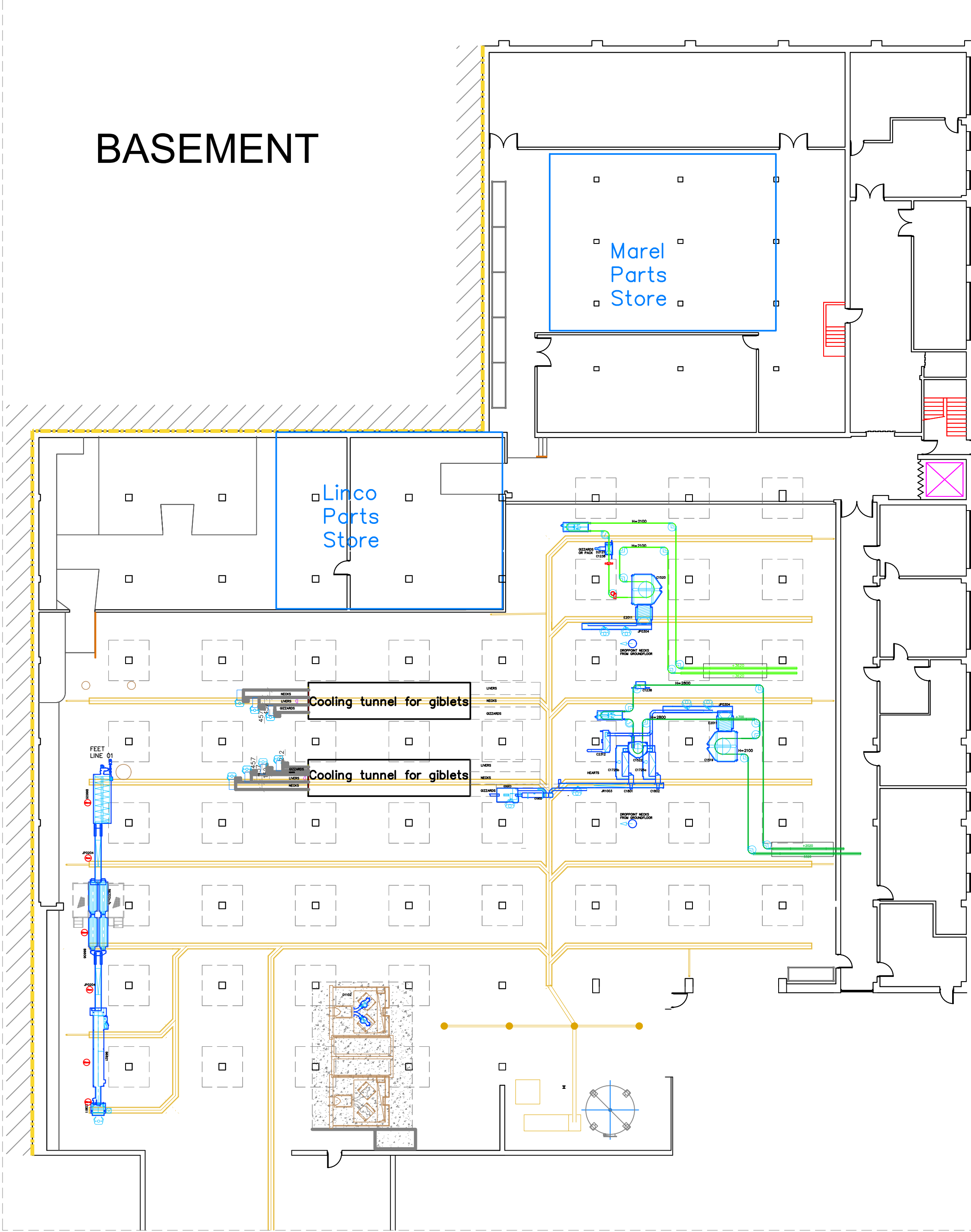
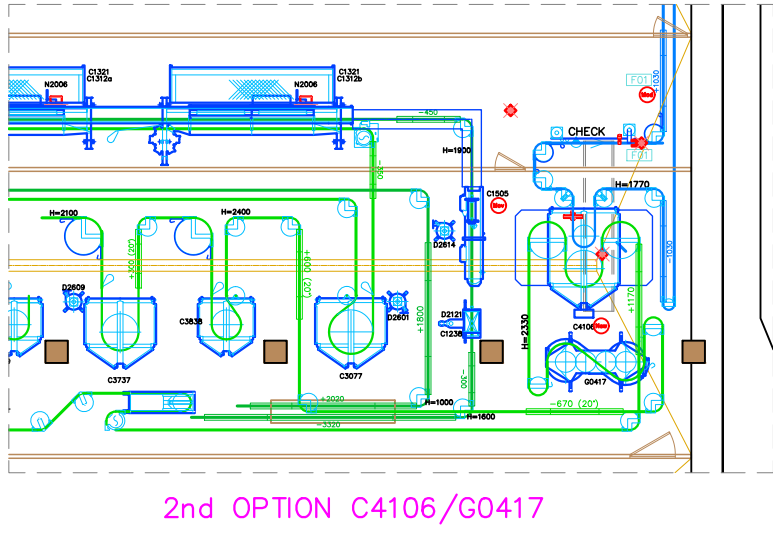
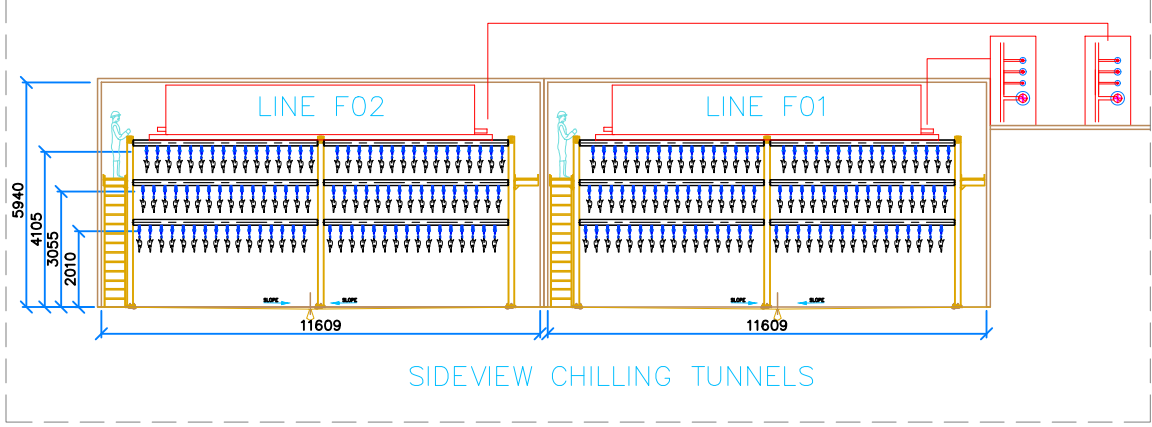
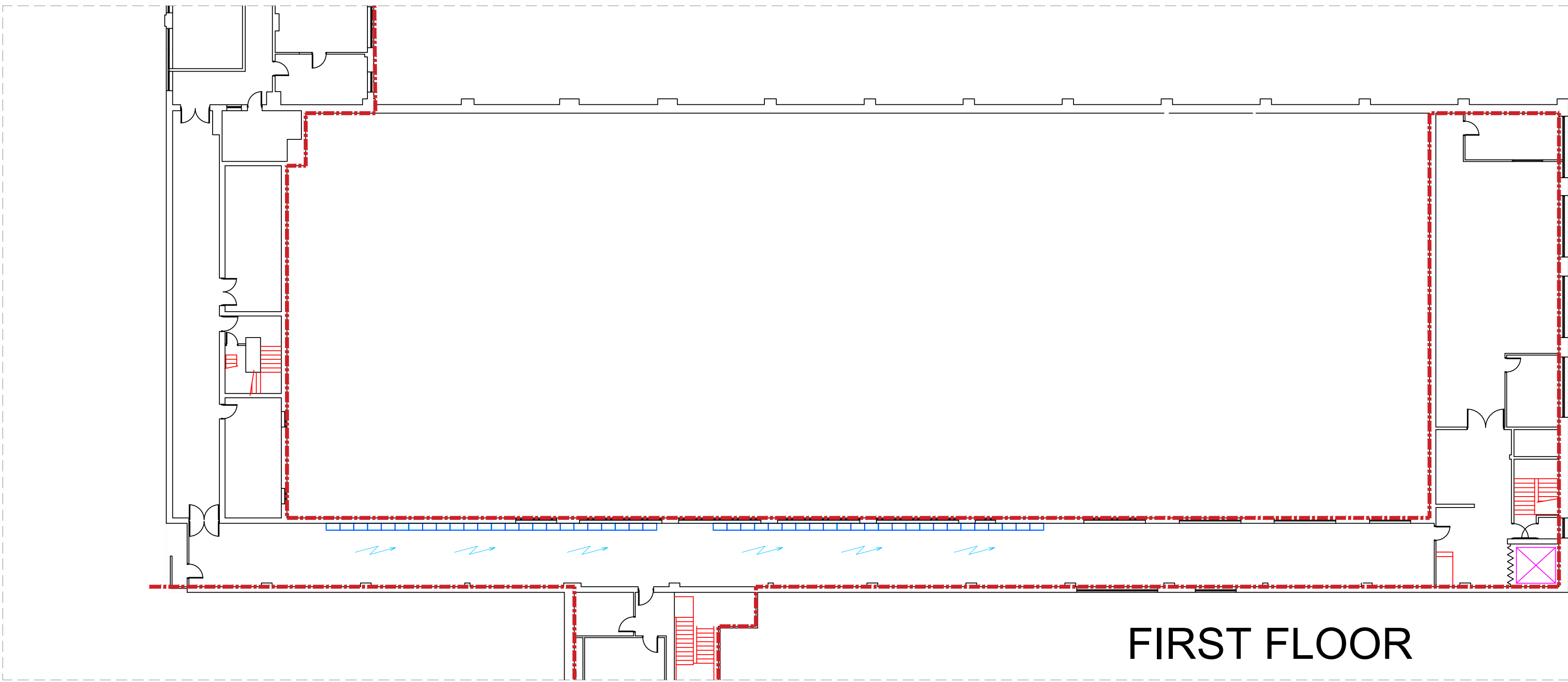
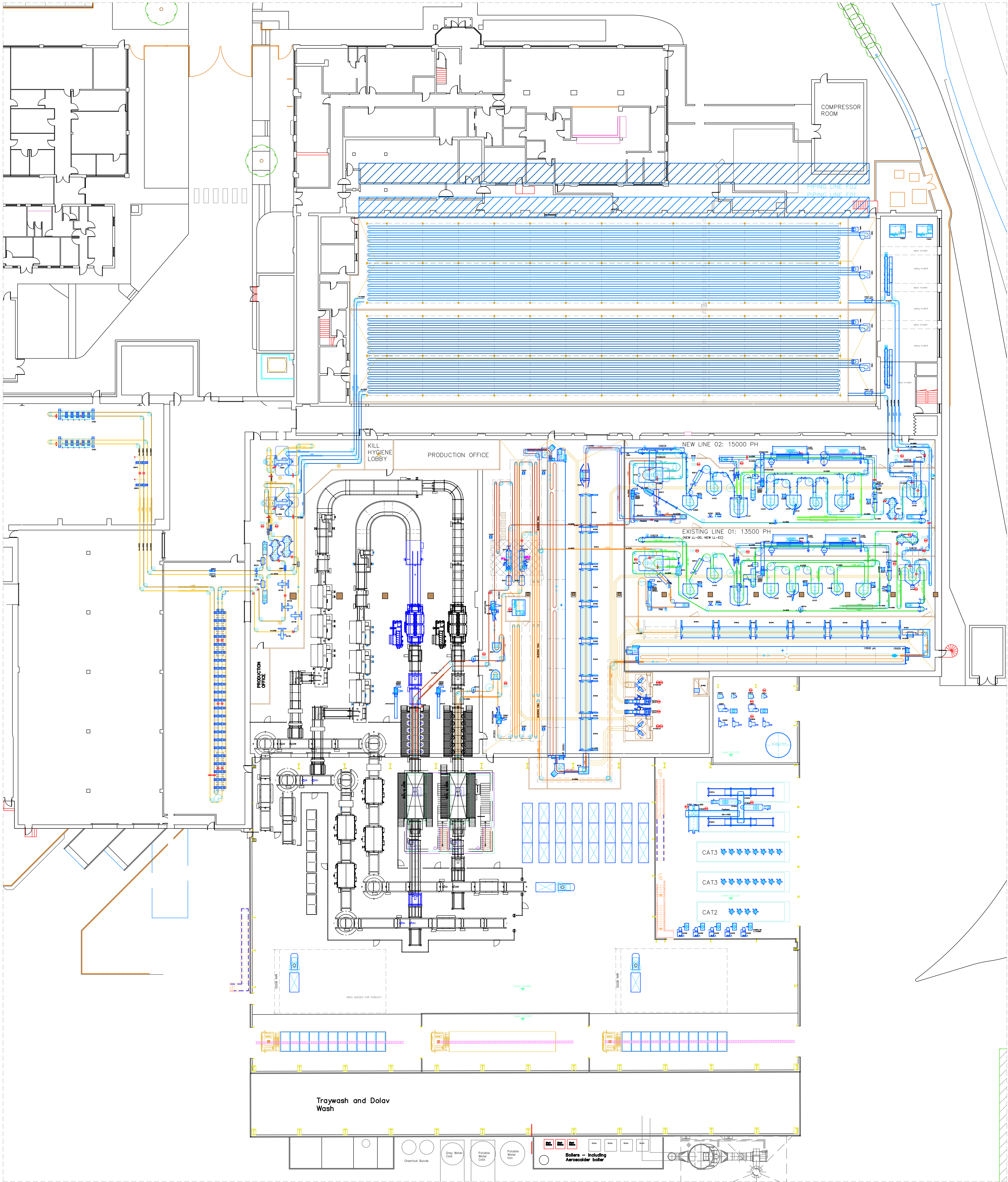
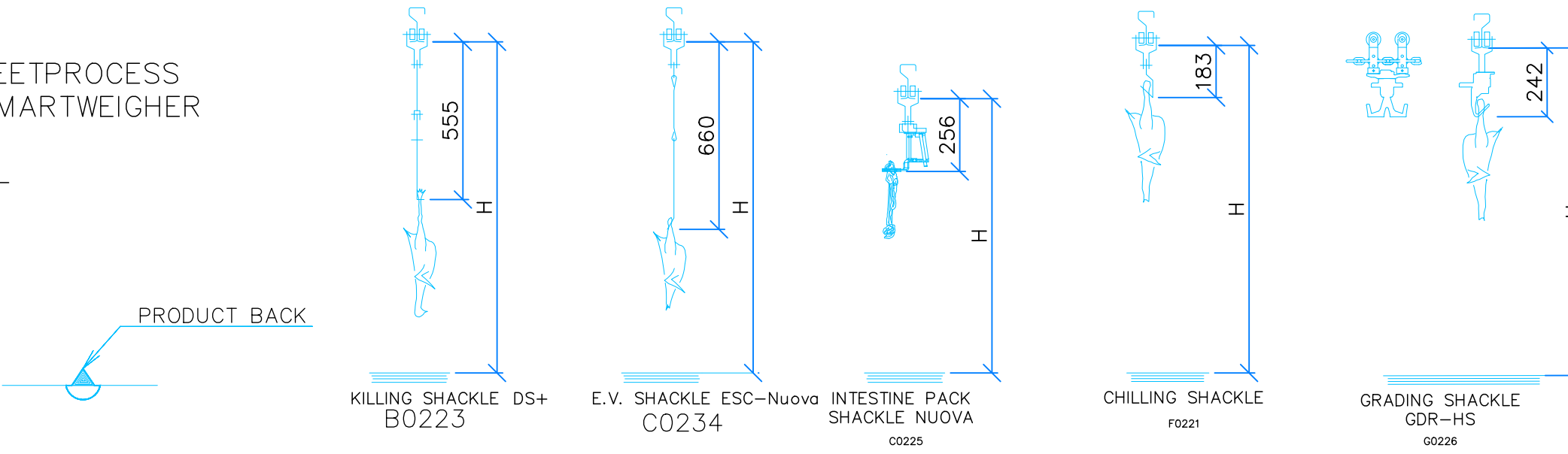


REV.	POS.	MODIFICATION DESCRIPTION	NAME	DATE	ACCORDED
A		UPDATED WITH FEET UNLOADING PROCESS	D.LUKASSEN	08.04.21	
B		UPDATED LINE 02 WITH BATH UNLOADER	D.LUKASSEN	08.04.21	
C		ADDED B2725CA180417 TO LINE 01. MOVED PACKLINER IN BASEMENT	D.LUKASSEN	23.04.21	



- LINE B01: REPLACED TR-DE BY LINELINK-DE, MOVED FEETPROCESS
LINE C01: REPLACED TR-EC BY LINELINK-EC; ADDED SMARTWEIGHER
LINE CP01: MOVED TO BASEMENT
LINE F01: MINOR TRACK MODIFICATIONS OUTSIDE TUNNEL
LINE G01: EXTENDED WITH TRACK AND UNLOADERS
- LINE B02: NEW
LINE C02: NEW
LINE CP02: NEW
LINE F02: NEW
LINE G02: NEW



REVISION: LINE 01 EXISTING, LINE 02 NEW CALCULATION: CHECKED	CUSTOMER: MAREL FOODS LTD, WIREHAM CUSTOMER NO: 28596	COUNTRY: UNITED KINGDOM
TENSION REF NO: 3786132	CONFIDENTIAL	ALL DIMENSIONS SPECIFIED IN: MM
BUDGET LAYOUT DRAWING PROCESSING PLANT	DRAWING AND MANUFACTURING ACCORDING TO STANDARDS	SCALE: A0 1:200
BROILER 13500 PH BROILER 15000 PH	DATE: 08.04.2021	DRAWN BY: D.LUKASSEN
Marel FOODS LTD Marel FOODS LTD Marel FOODS LTD	4048868	ACCORDED: R.VD. STAR
SHEET NO: 1 OF 1		