

Appendix 9.1

Figures for Chapter 9 of Environmental Statement for Vaynor Quarry ROMP Applications

Published by Stantec UK Limited
July 2022

Document reference:

64789R1 Appendix 9.1

Report status:

Final

Copyright © 2022 Stantec UK Ltd

T1.2.1

Report Reference: 64789R1 Appendix 9.1

Report Status: Final

Contents

FIGURES

Figure 9.1 Site location showing surrounding area	4
Figure 9.2 Bedrock geology	5
Figure 9.3 Superficial geology	6
Figure 9.4 Llanelly Formation thickness based on borehole logs and 3D modelling	7
Figure 9.5 Local geology	8
Figure 9.6 Nant y Glais cave system	9
Figure 9.7 Neighbouring historical landfills around the Site	10
Figure 9.8 Surface water features in proximity to the Site	11
Figure 9.9 Surface water features identified at the Site	12
Figure 9.10 Nant y Glais gauging locations, springs and dry reaches	13
Figure 9.11 Stream flow rate along Nant y Glais compared to groundwater levels at VaynOB07a and rainfall at Pontsticill Upper station	14
Figure 9.12 Groundwater monitoring locations	15
Figure 9.13 Dowlais Limestone groundwater contours: April 2019	16
Figure 9.14 Dowlais Limestone groundwater contours: July 2019	17
Figure 9.15 Flow monitoring data	18
Figure 9.16 Total hardness values from surface water and groundwater quality sampling	18
Figure 9.17 Licenced abstractions and private water supplies	19
Figure 9.18 Llwynsilanws Farm springs (from July 2018 visit)	20
Figure 9.19 Neighbouring designated sites	20
Figure 9.20 Topography around the Site	21
Figure 9.21 Synthetic Nant-y-Glais flow rate at the three gauging locations	22
Figure 9.22 Stream flow rate variation over time along Nant y Glais	23
Figure 9.23 Gauge board levels	24
Figure 9.24 Location of spillover points from the eastern and western arm	25
Figure 9.25 Dowlais limestone groundwater hydrographs	26
Figure 9.26 Abercriban Oolite and Dowlais limestone groundwater hydrographs	27

Figure 9.27 Conceptual hydrogeological cross section running east-west	28
Figure 9.28 Conceptual hydrogeological cross section running north-south	29

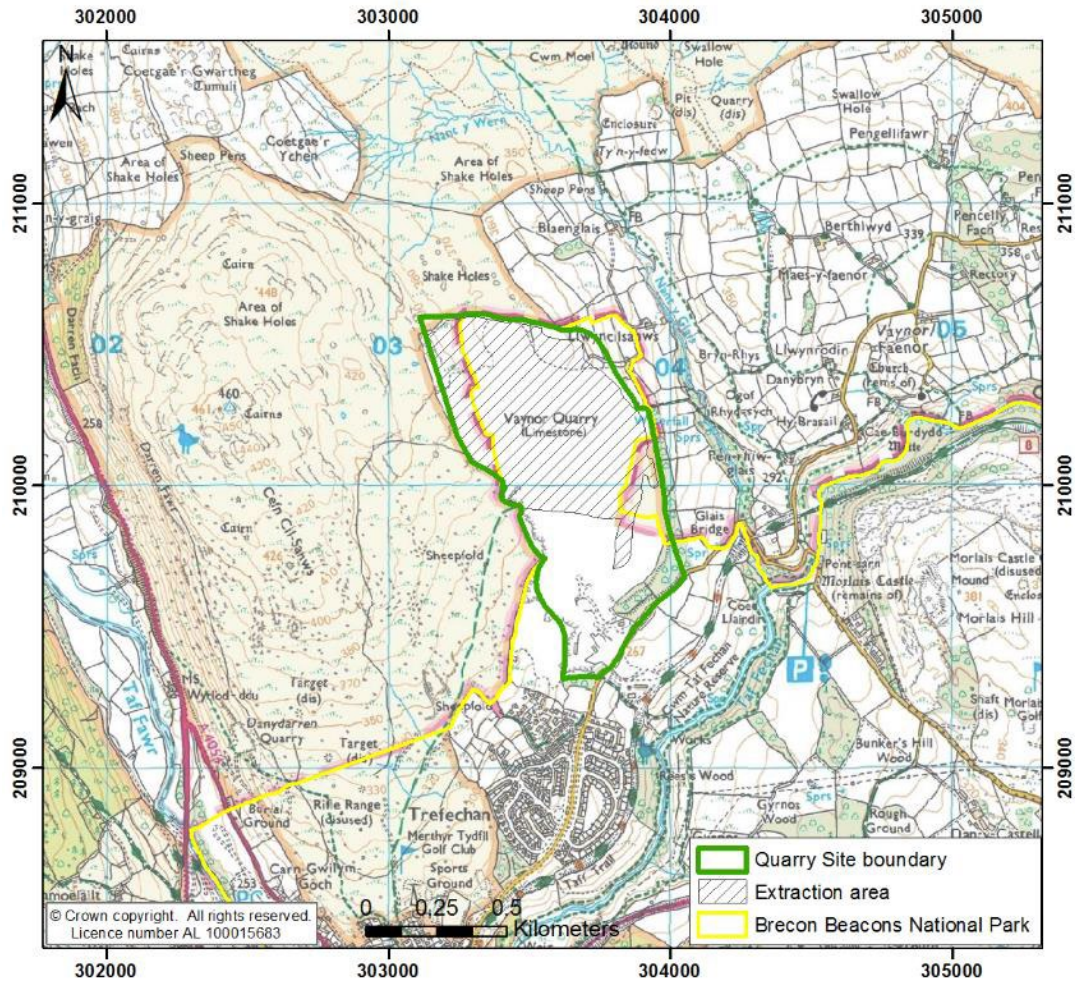


Figure 9.1 Site location showing surrounding area

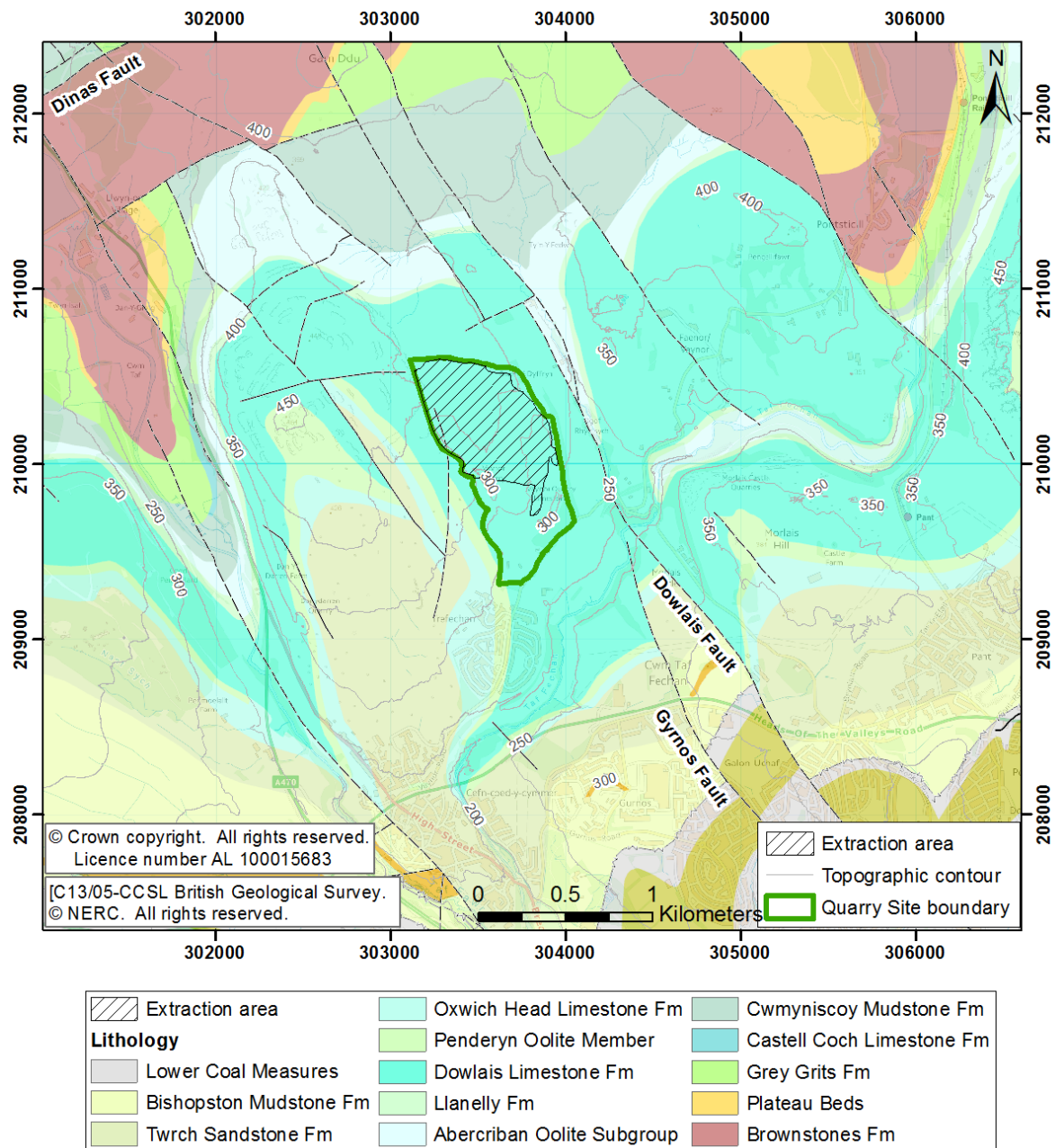


Figure 9.2 Bedrock geology

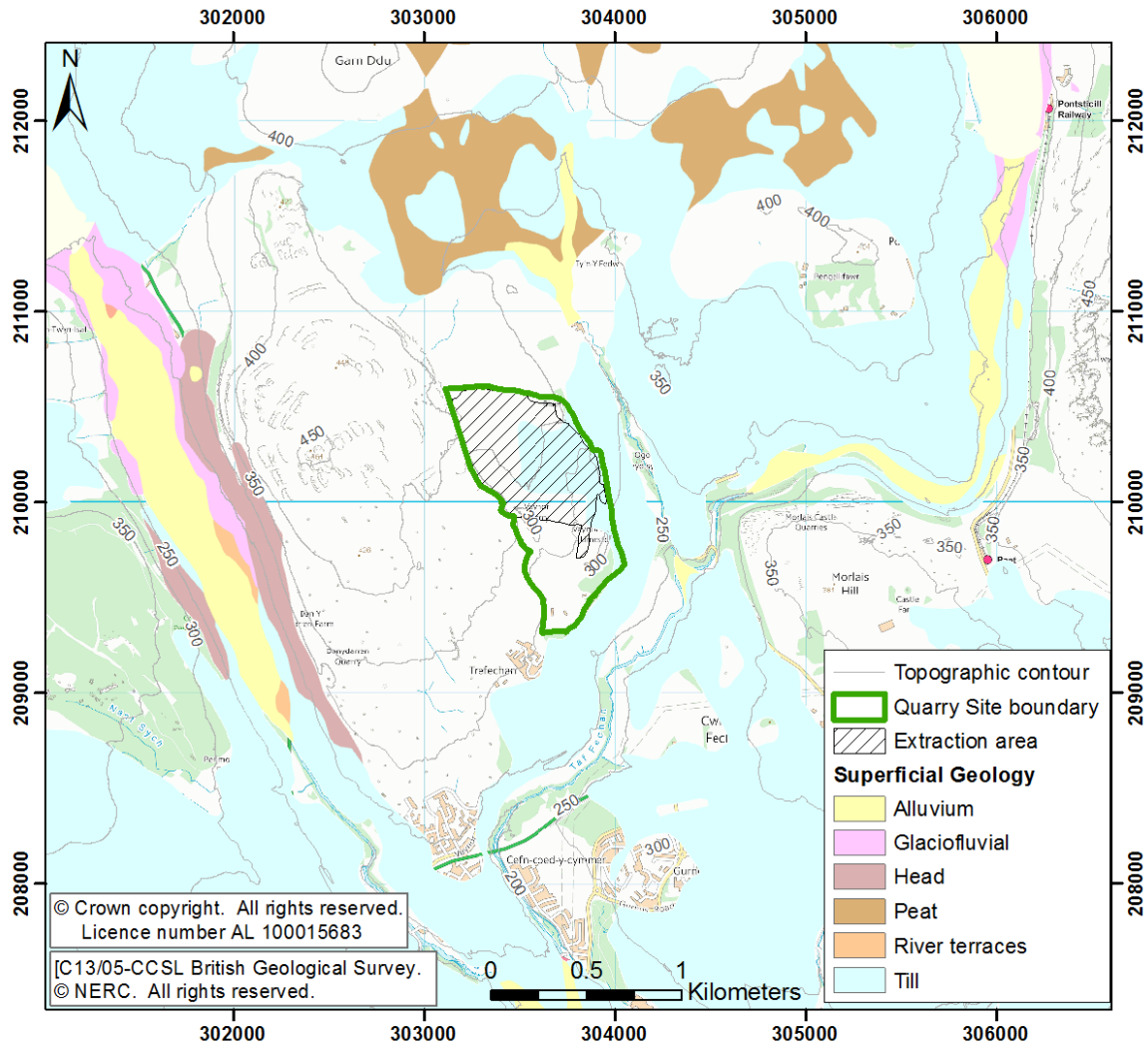


Figure 9.3 Superficial geology

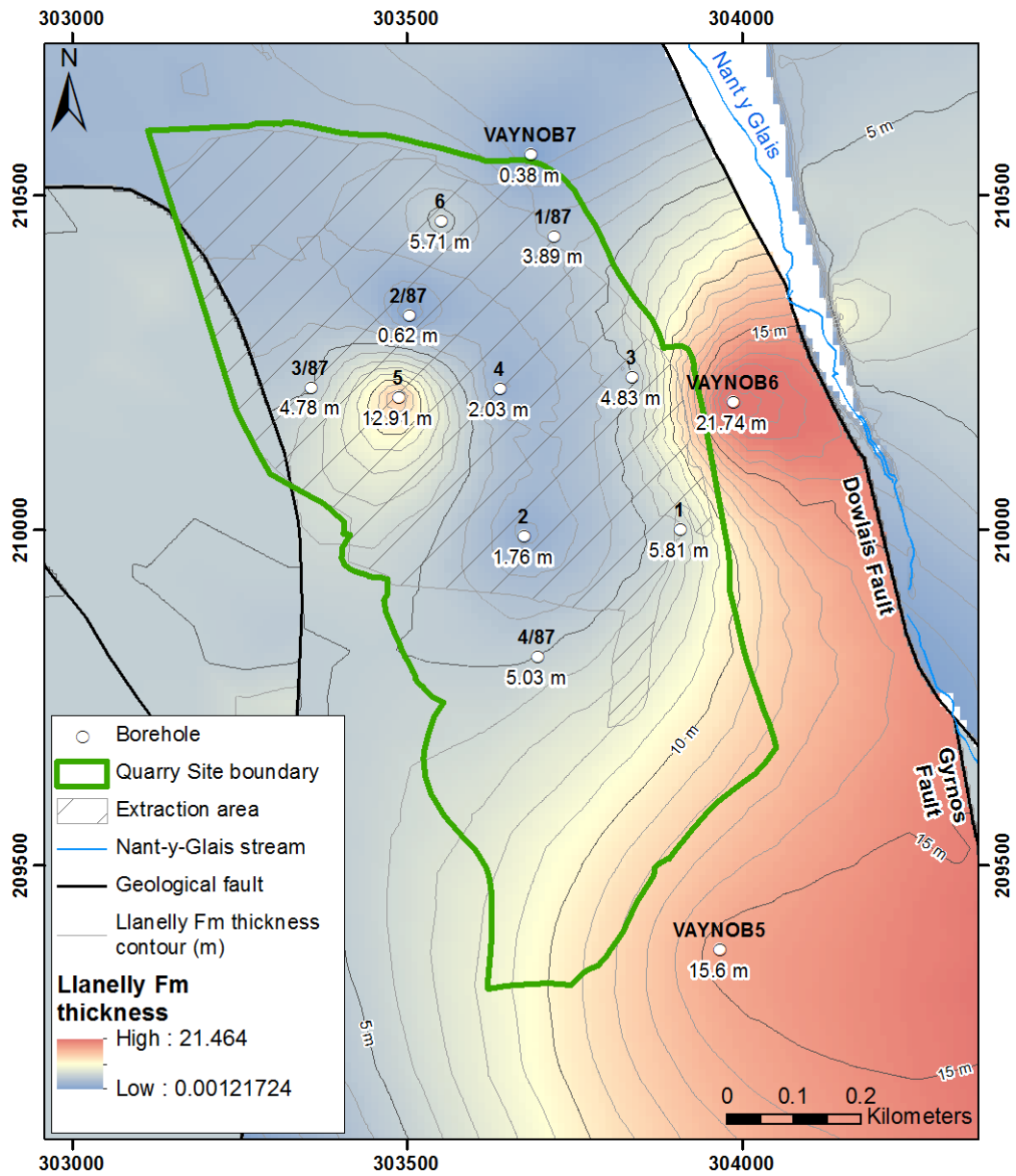


Figure 9.4 Llanelly Formation thickness based on borehole logs and 3D modelling

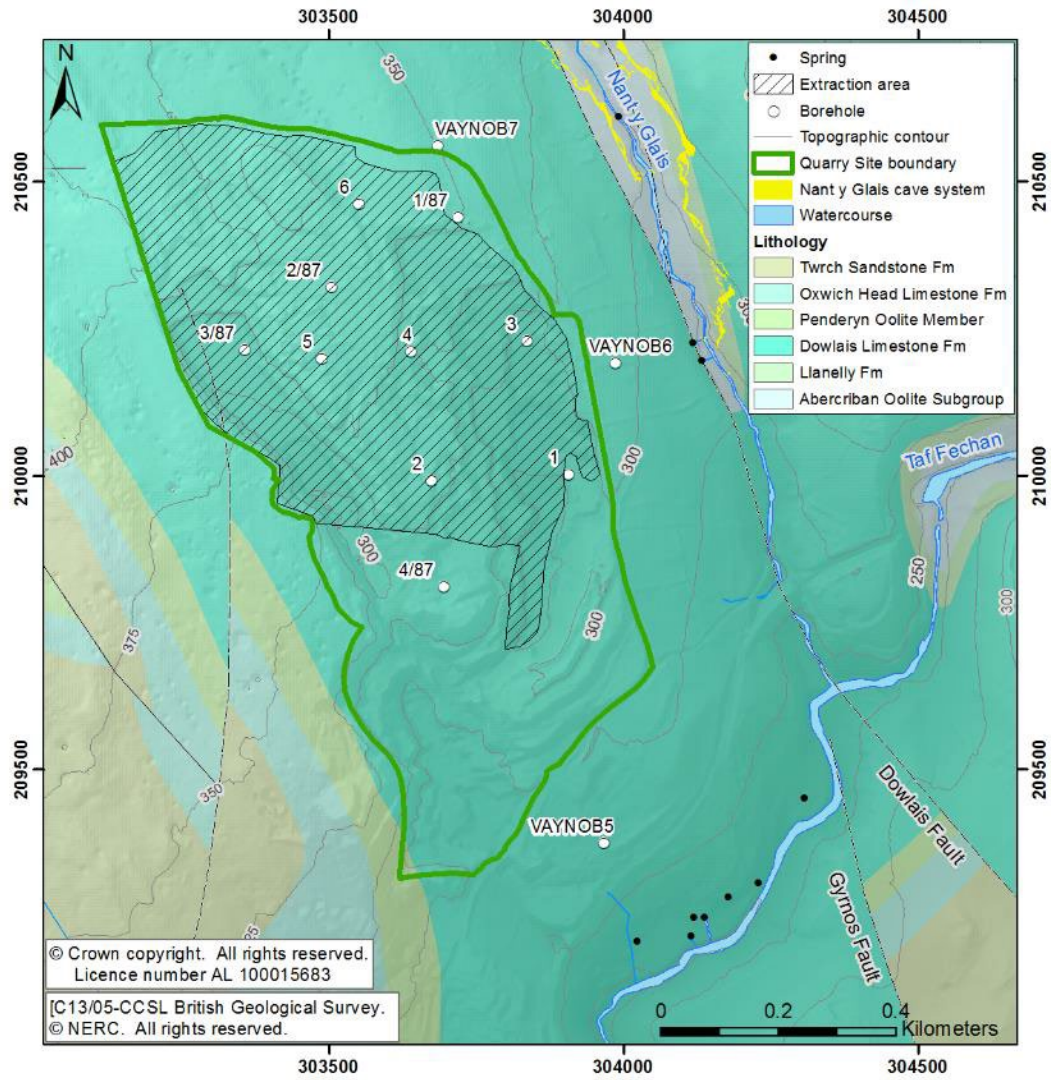


Figure 9.5 Local geology

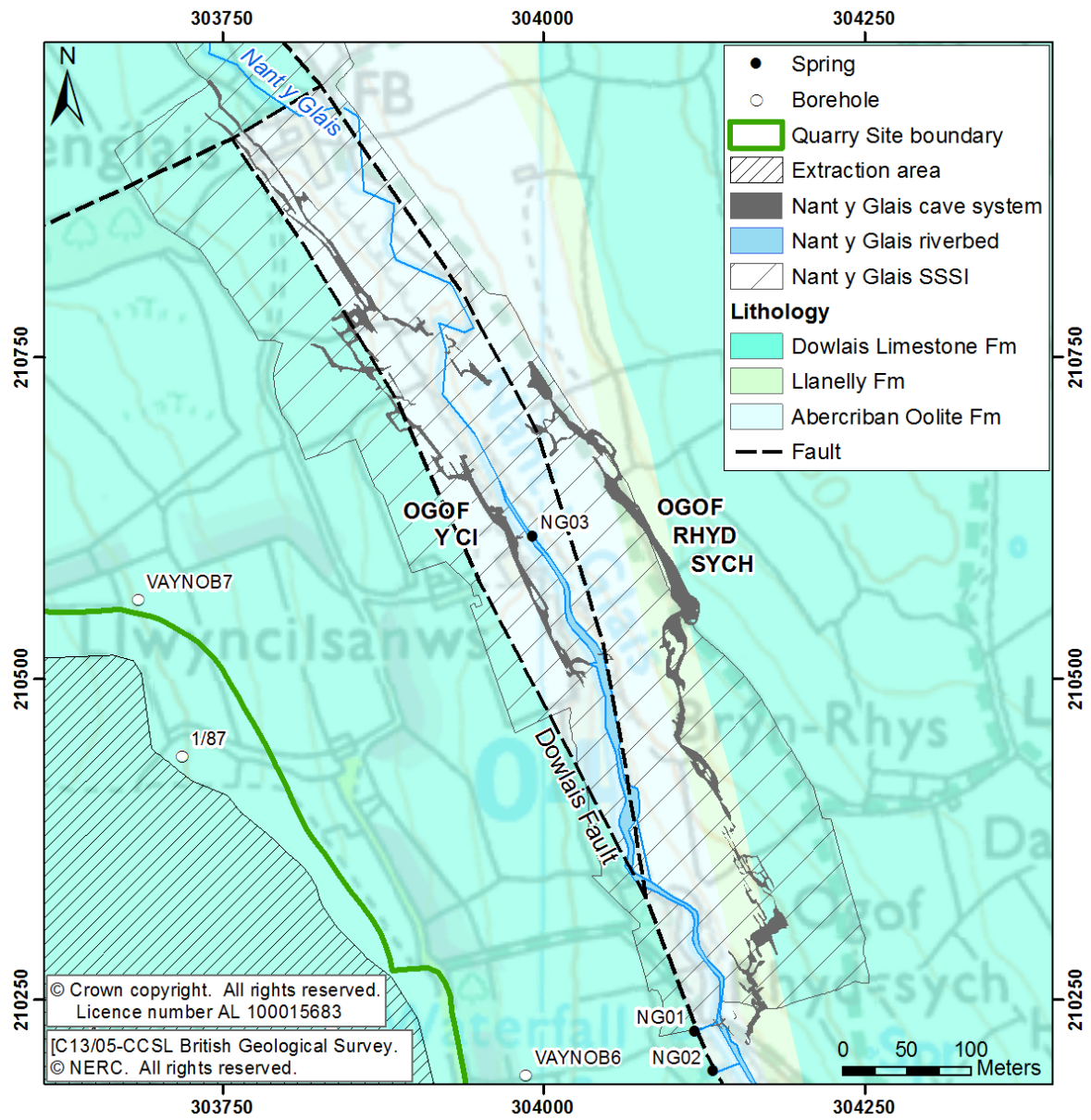


Figure 9.6 Nant y Glais cave system

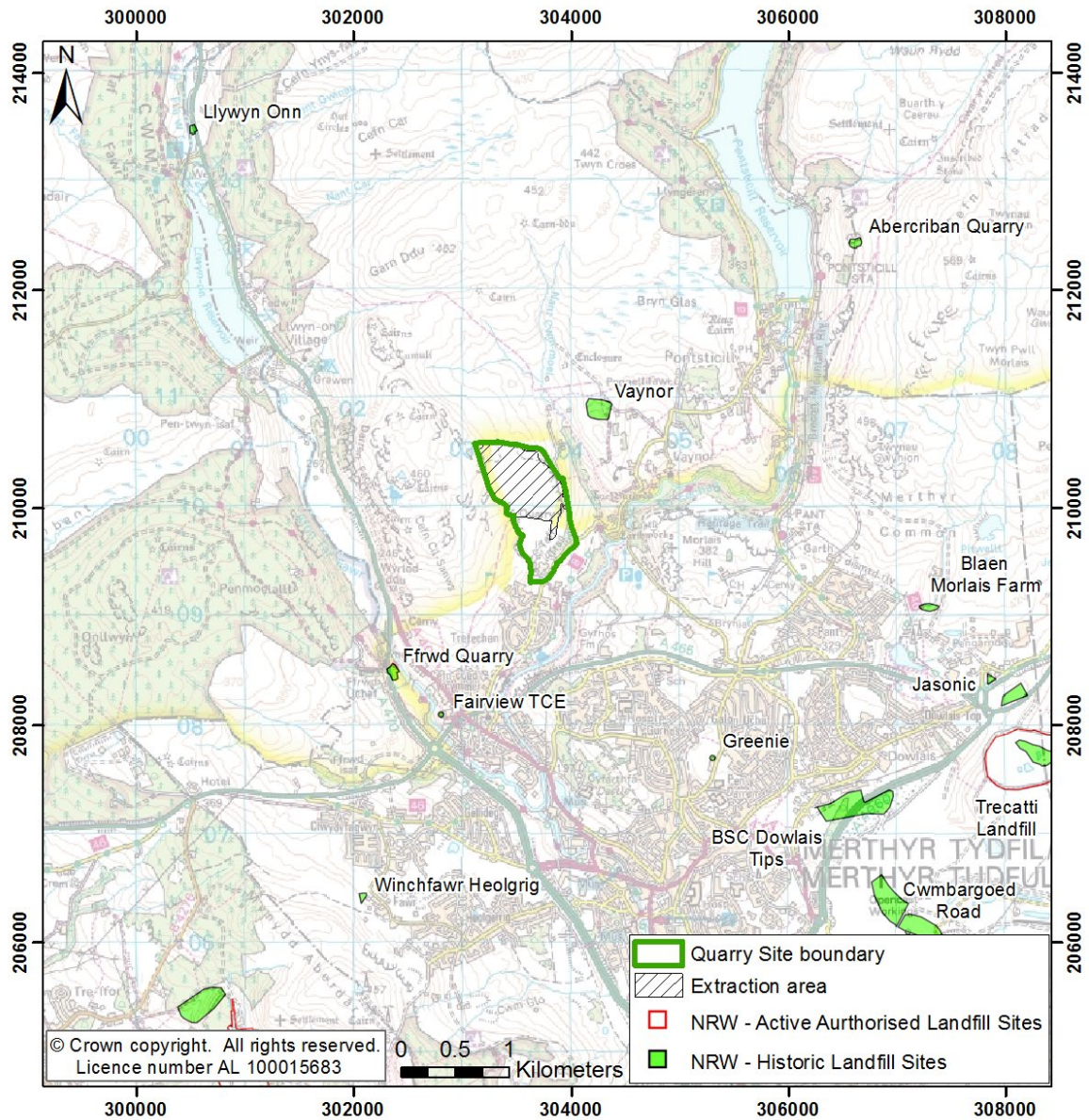


Figure 9.7 Neighbouring historical landfills around the Site

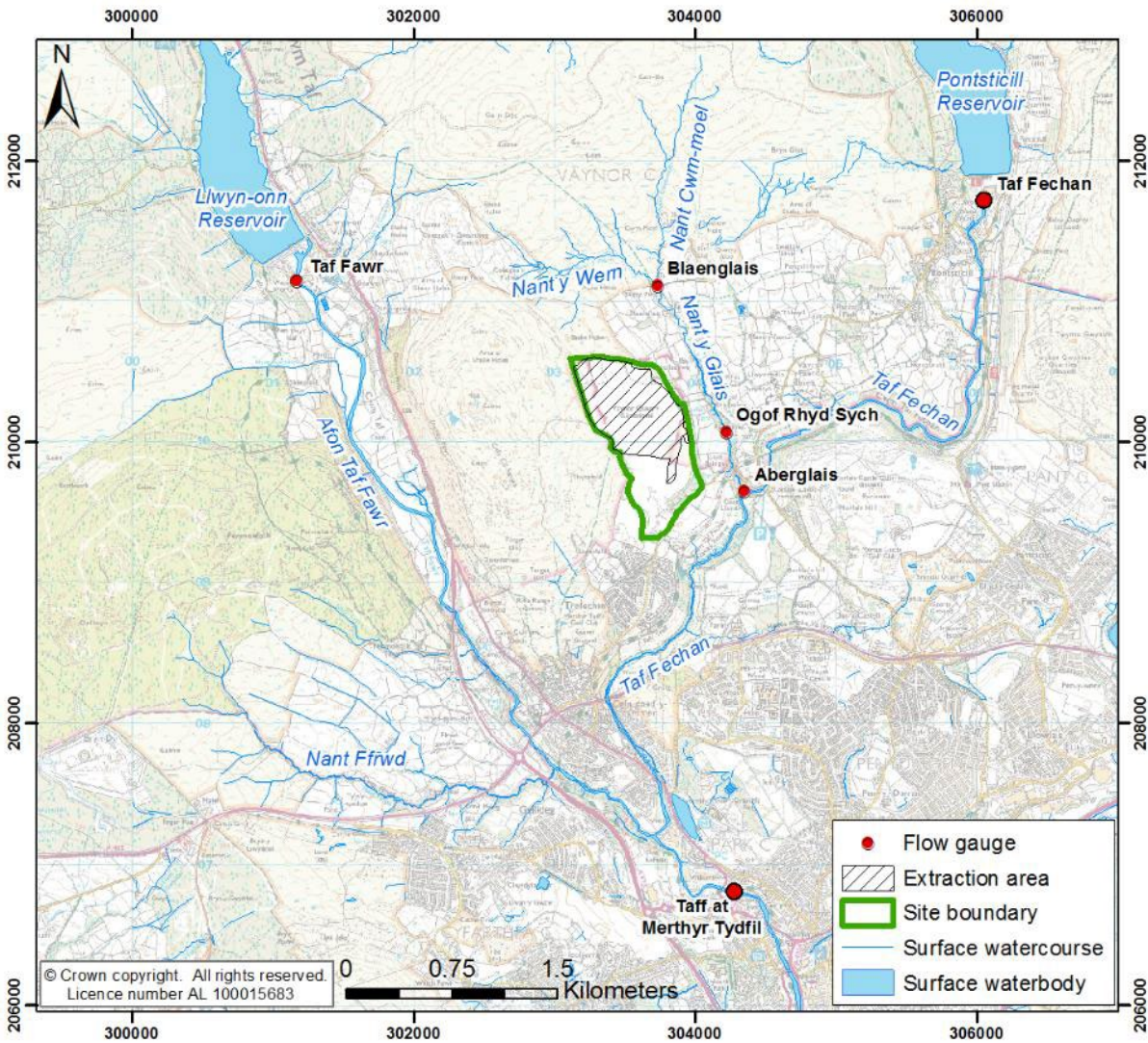


Figure 9.8 Surface water features in proximity to the Site

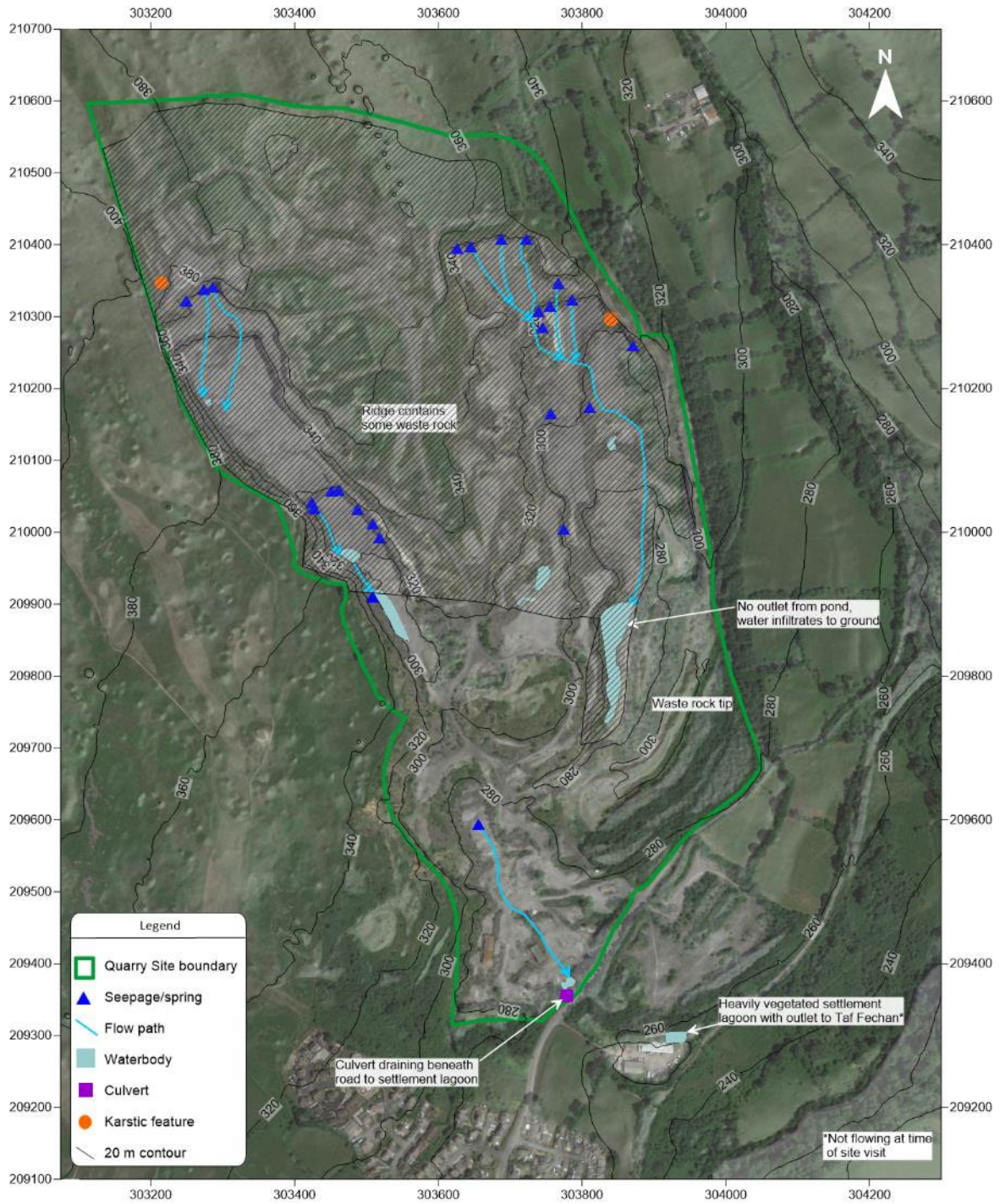


Figure 9.9 Surface water features identified at the Site

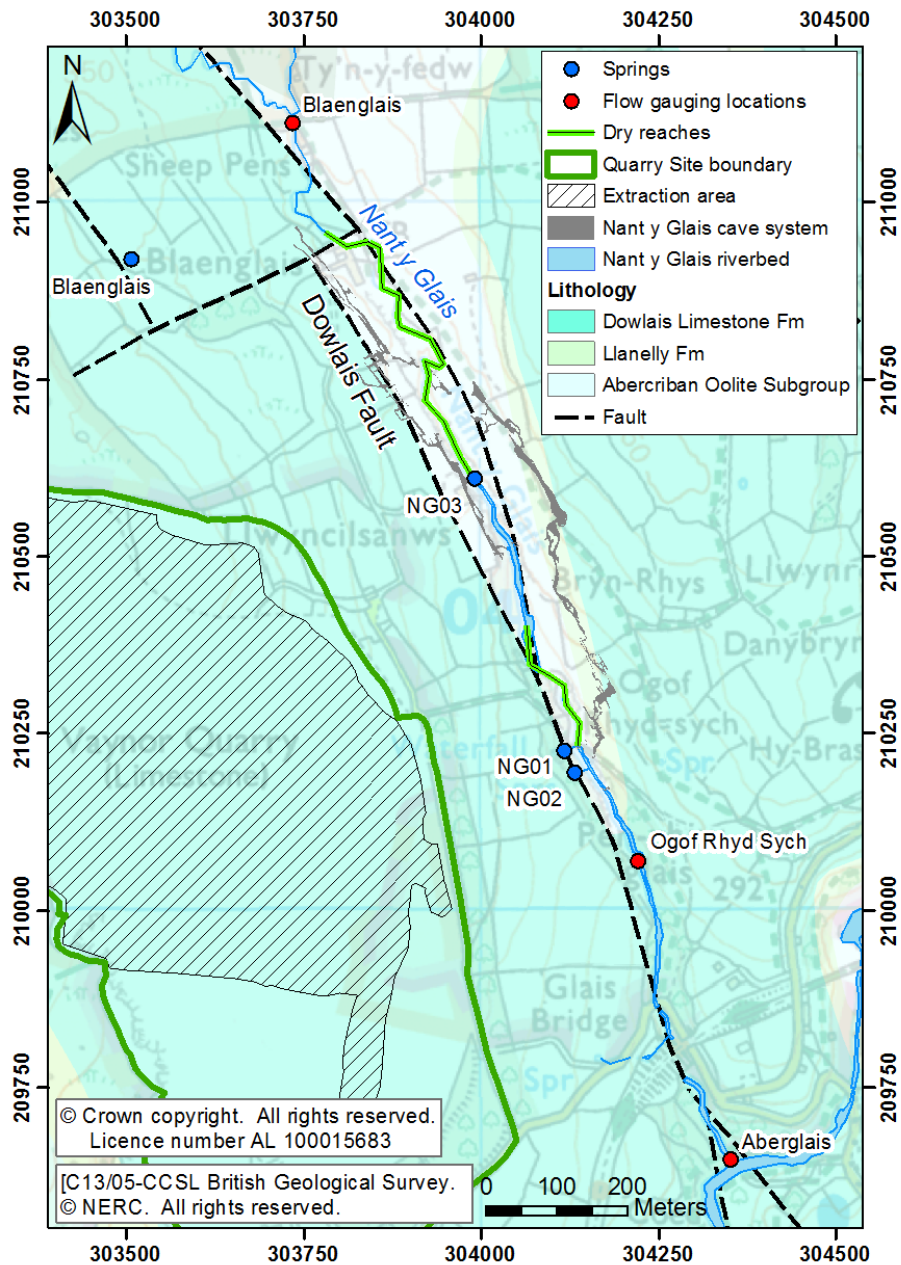


Figure 9.10 Nant y Glais gauging locations, springs and dry reaches

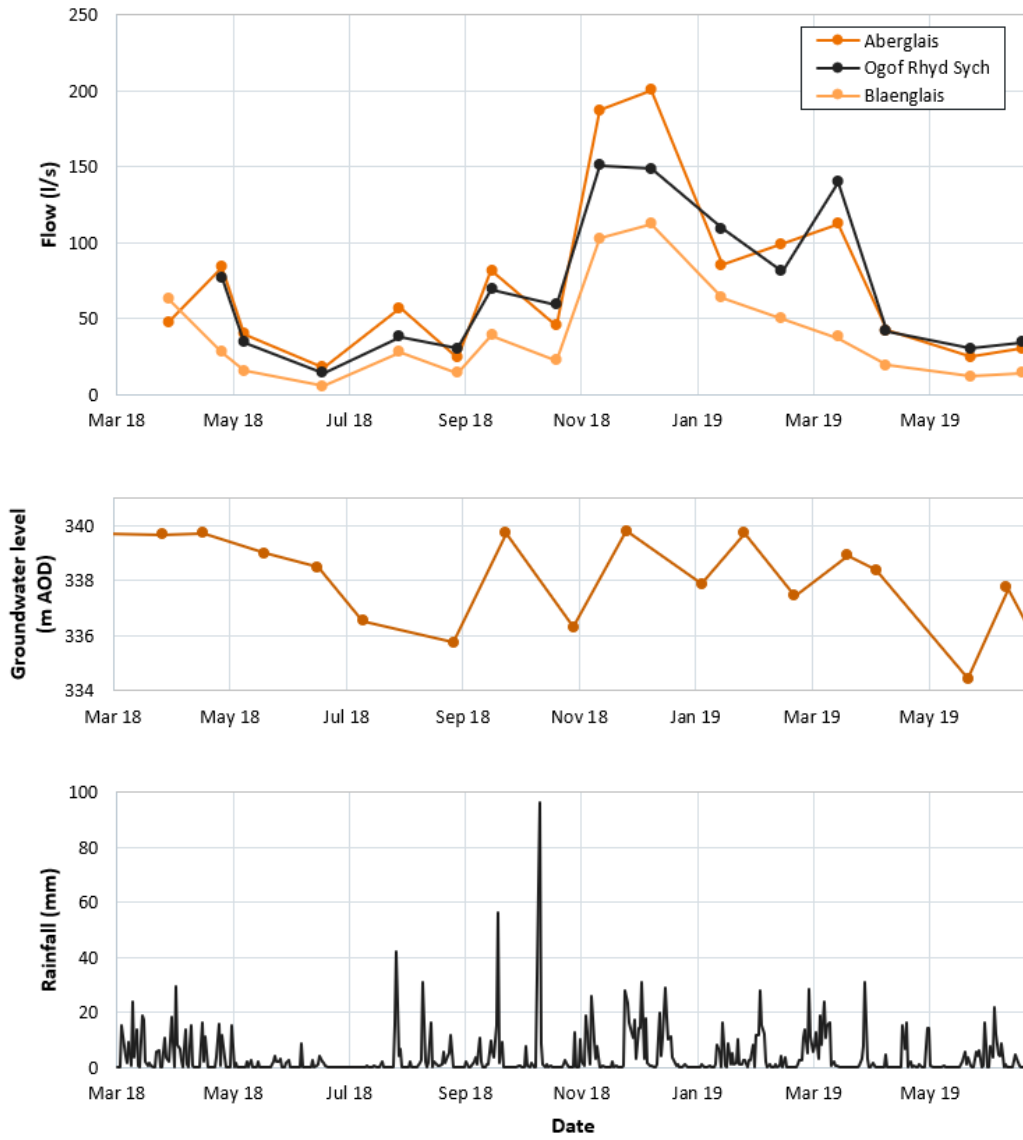


Figure 9.11 Stream flow rate along Nant y Glais compared to groundwater levels at VaynOB07a and rainfall at Pontsticill Upper station

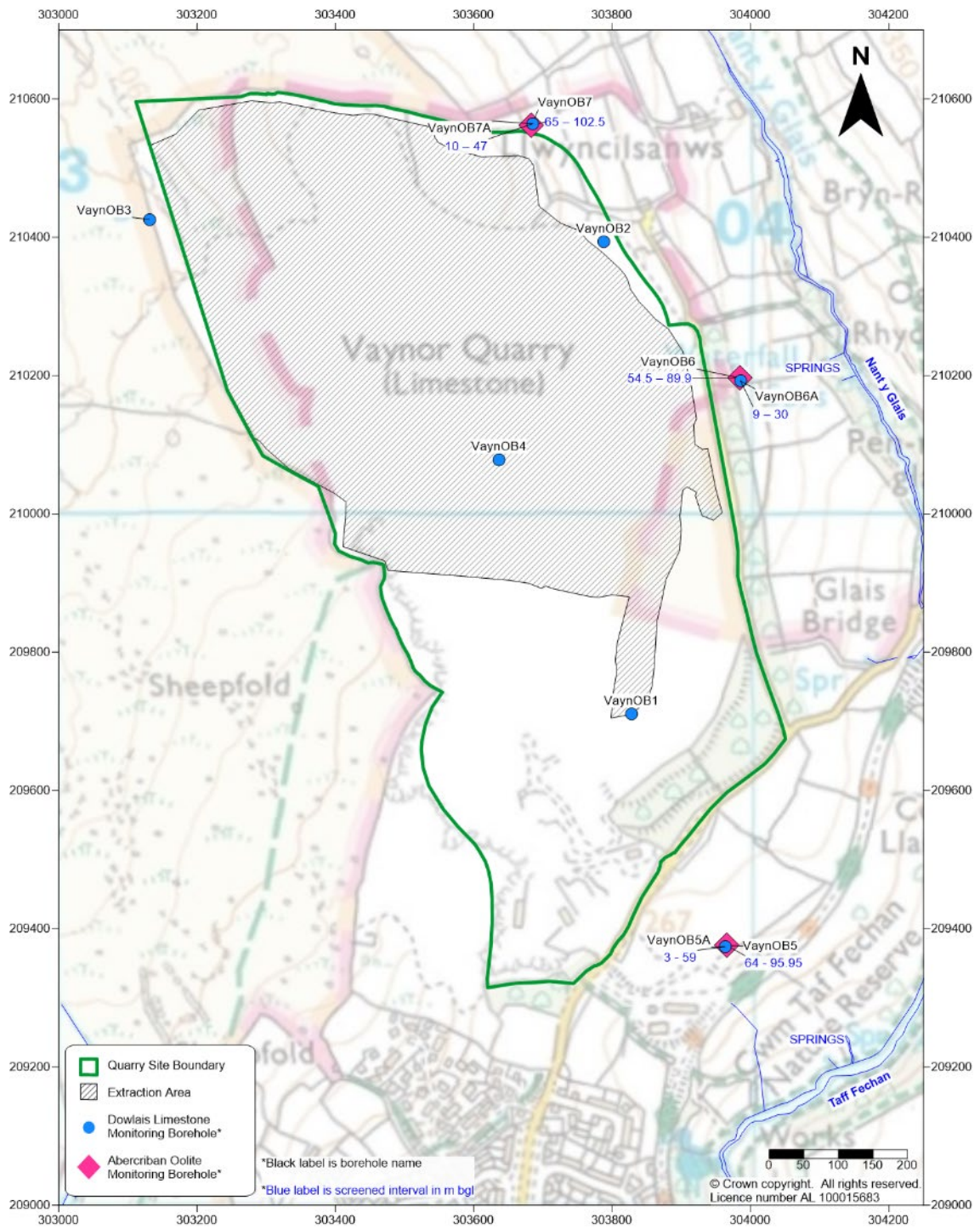


Figure 9.12 Groundwater monitoring locations