

Figure 9.13 Dowlais Limestone groundwater contours: April 2019



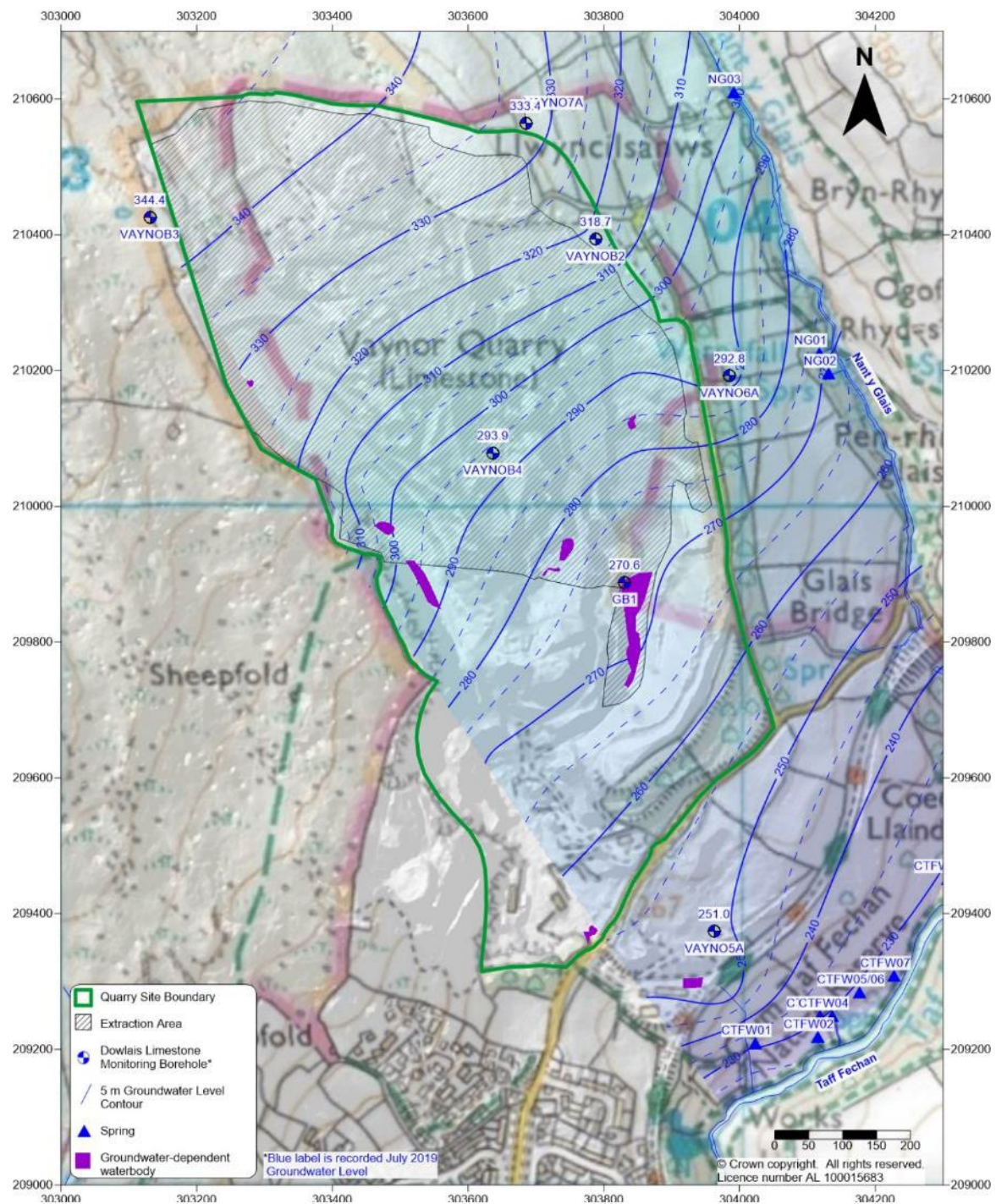


Figure 9.14 Dowlais Limestone groundwater contours: July 2019

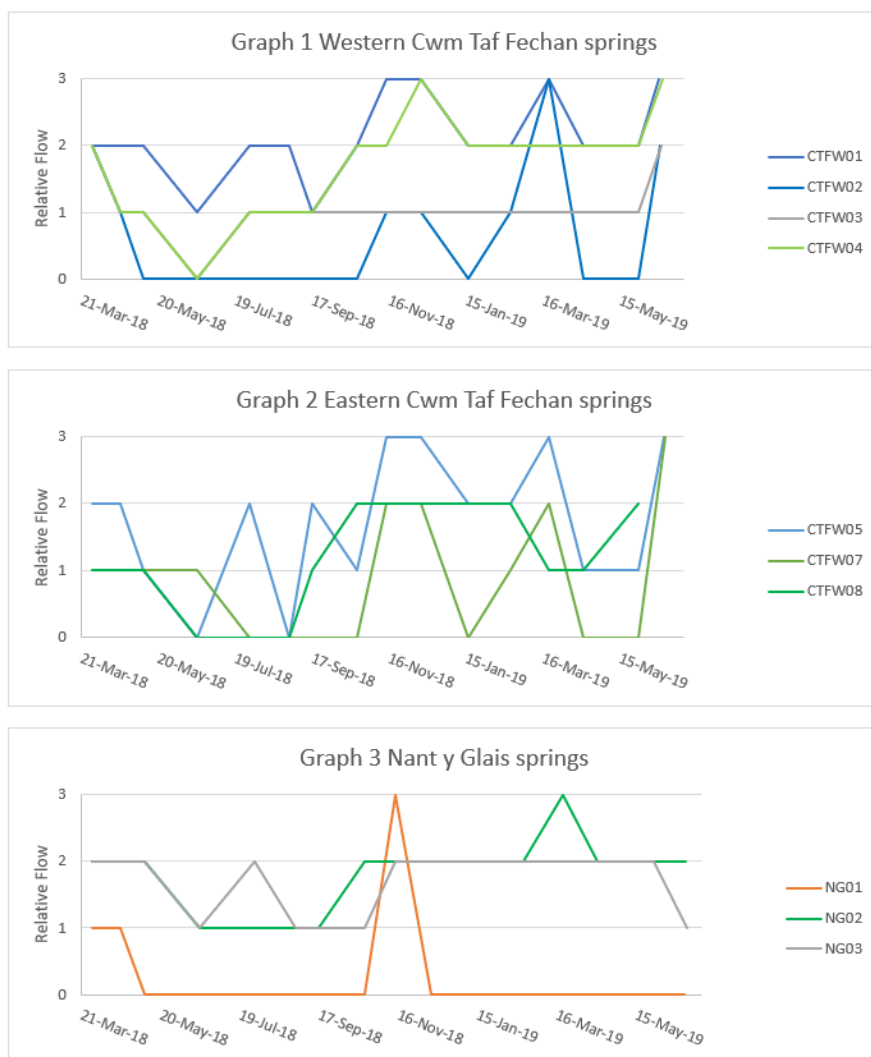


Figure 9.15 Flow monitoring data

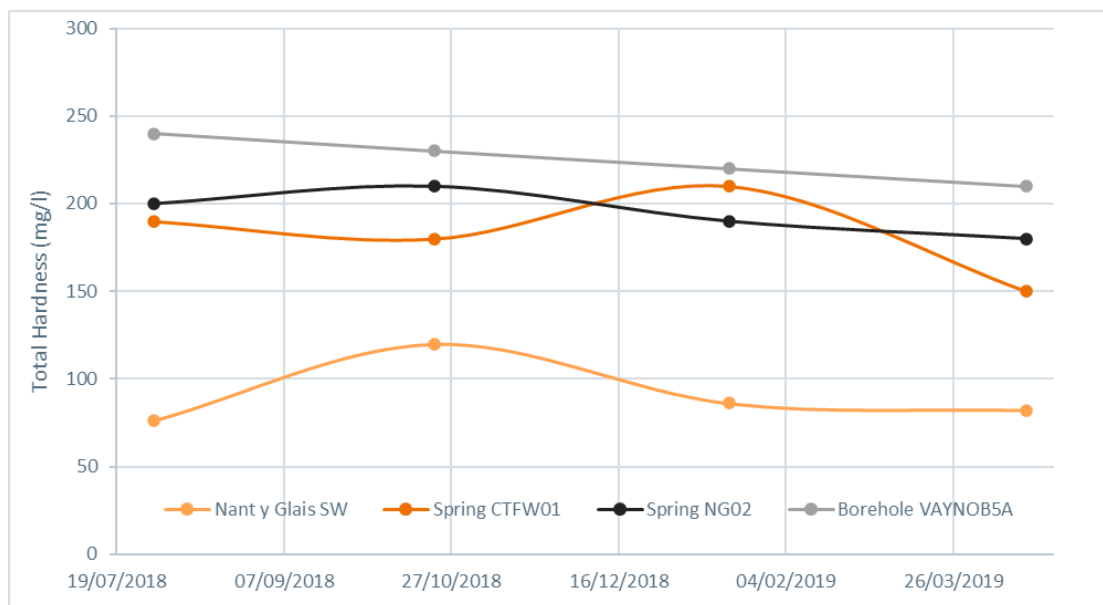


Figure 9.16 Total hardness values from surface water and groundwater quality sampling



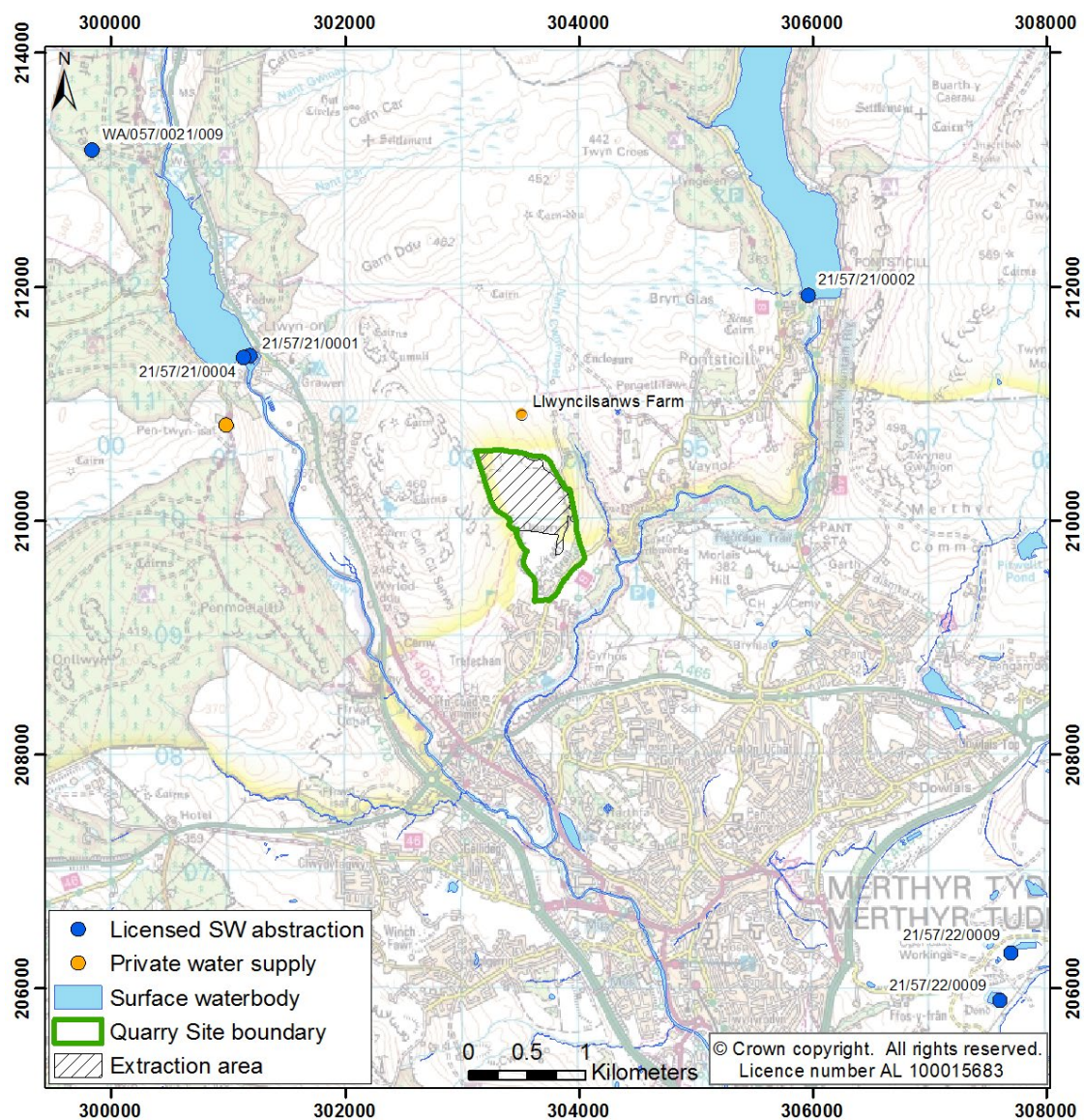


Figure 9.17 Licenced abstractions and private water supplies





Figure 9.18 Llwynsilanws Farm springs (from July 2018 visit)

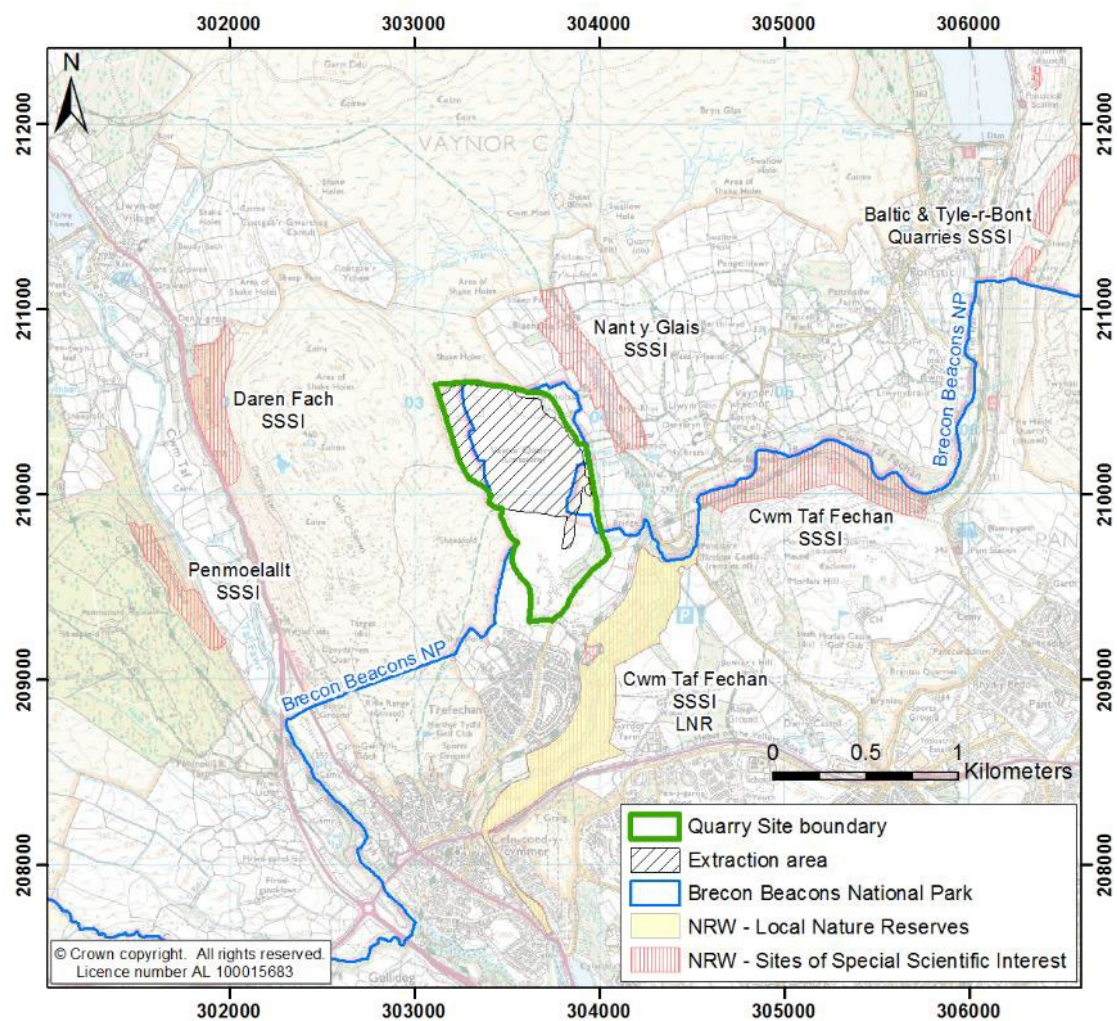


Figure 9.19 Neighbouring designated sites



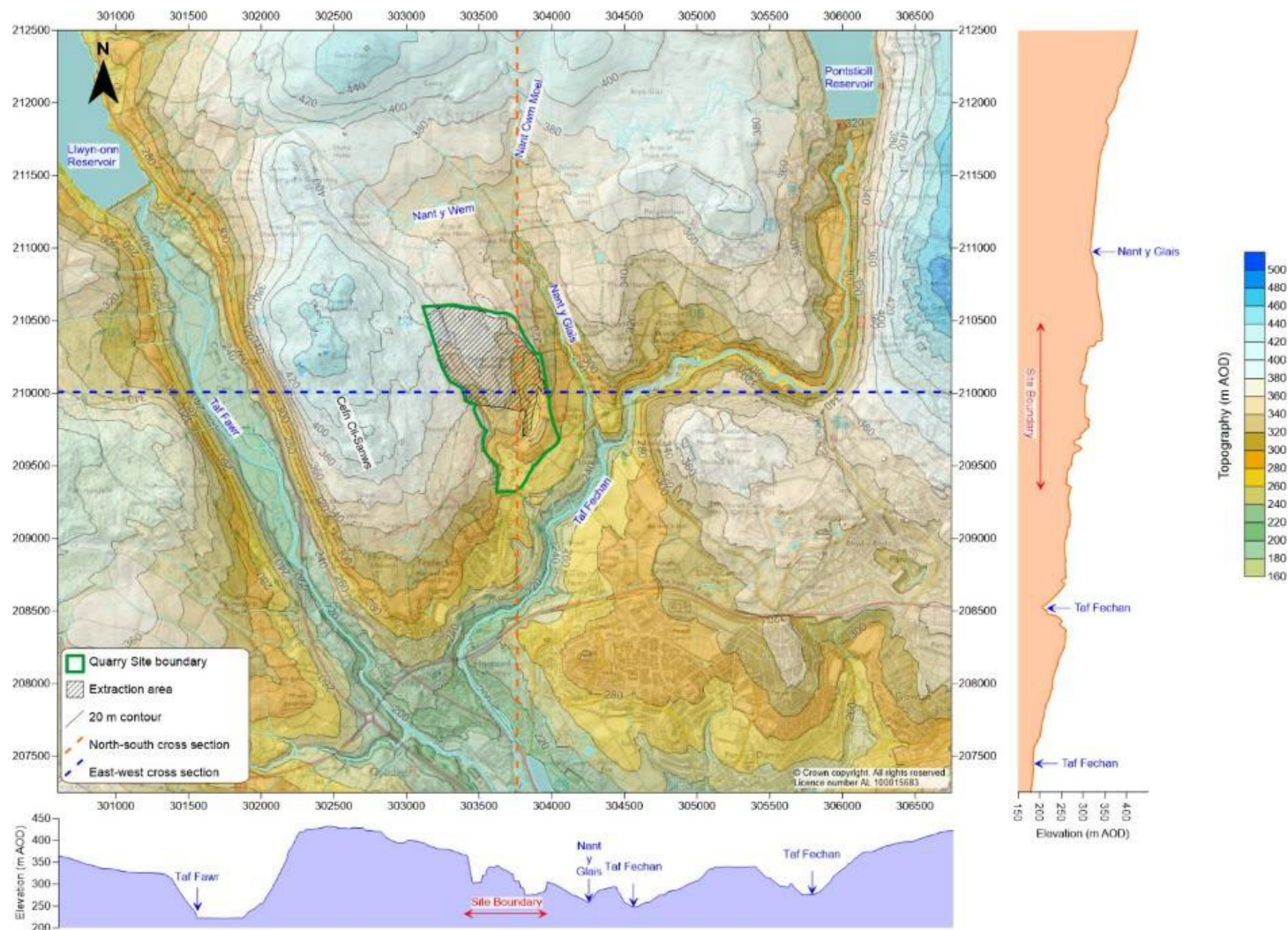


Figure 9.20 Topography around the Site



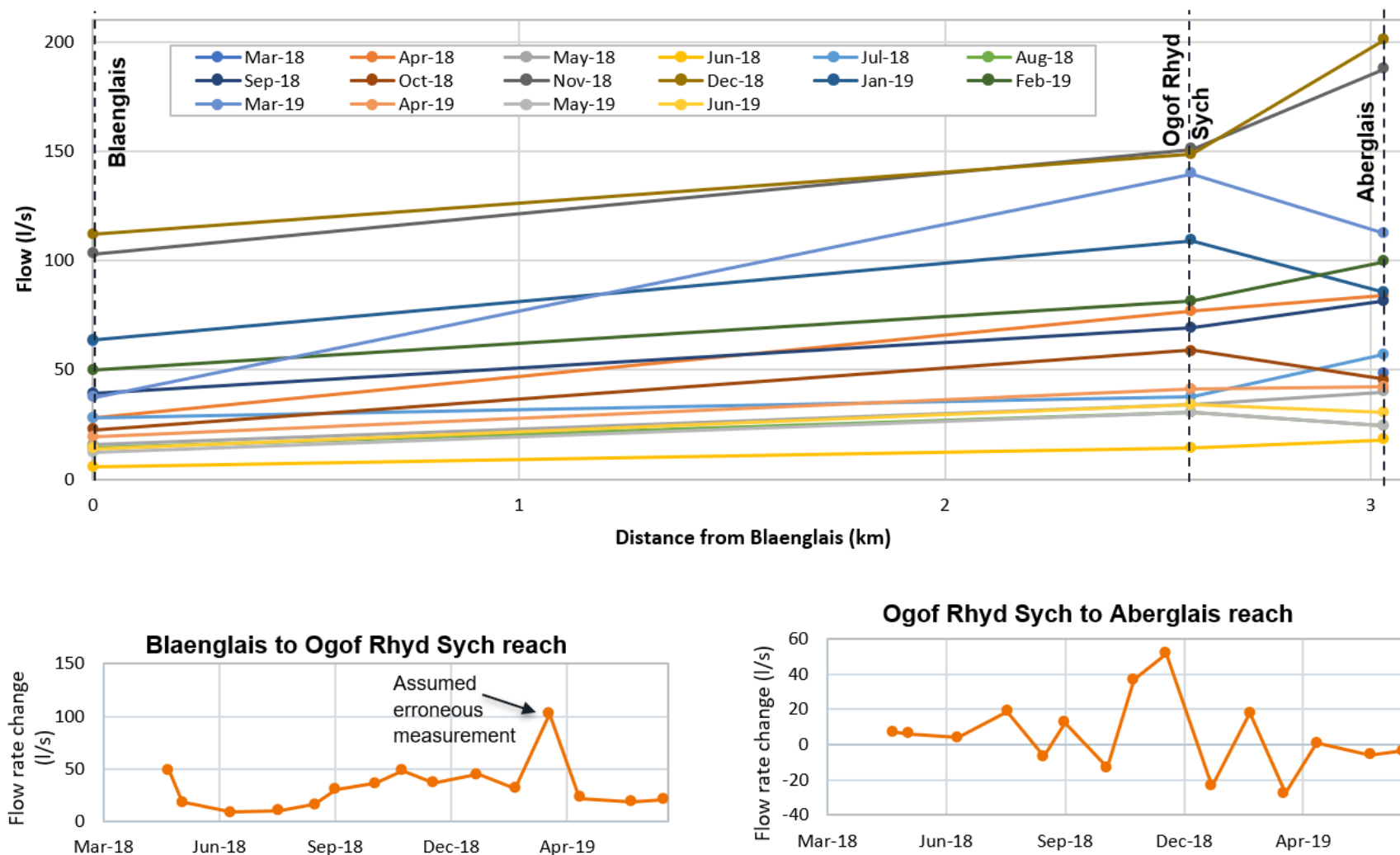


Figure 9.22 Stream flow rate variation over time along Nant y Glais



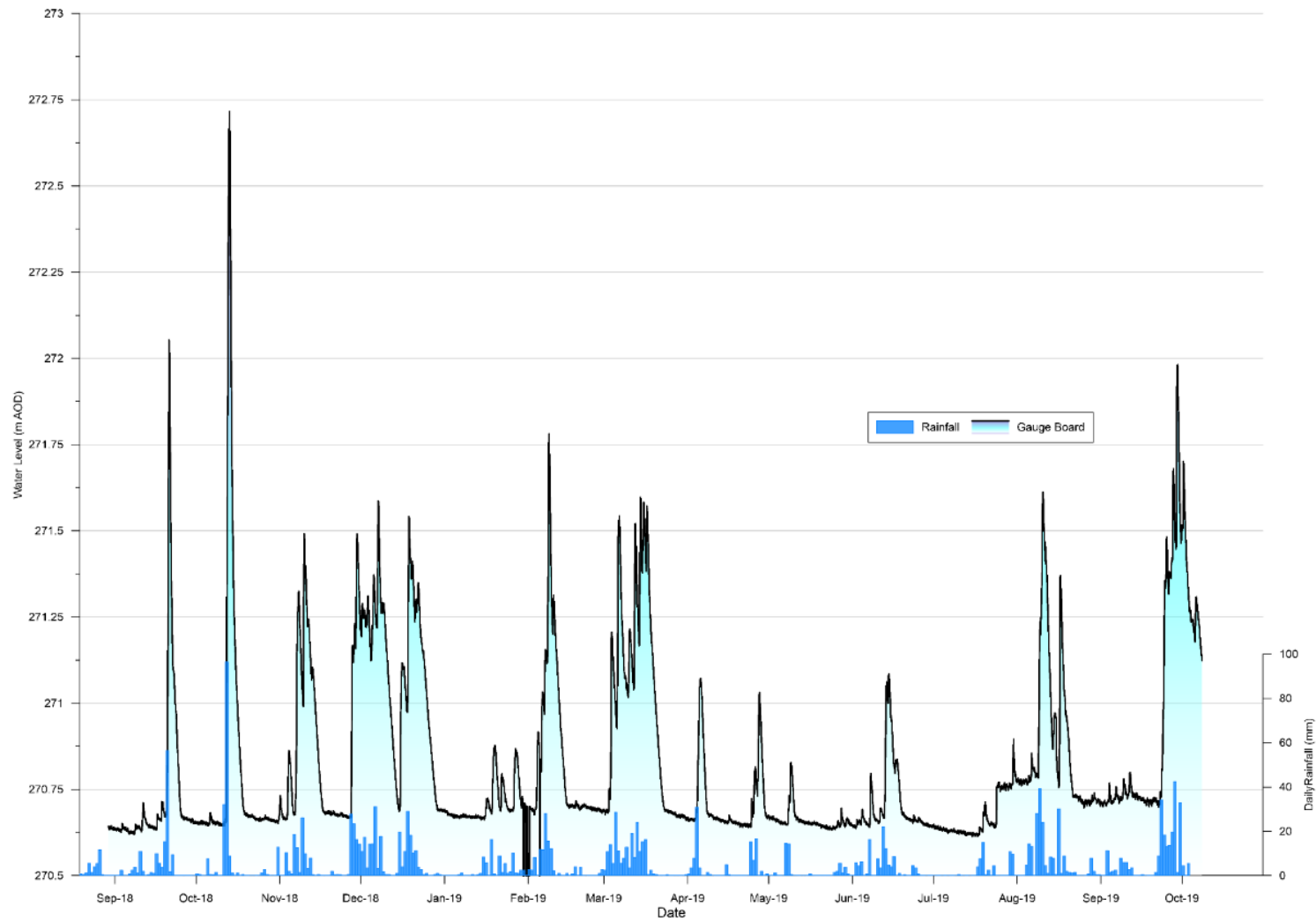


Figure 9.23 Gauge board levels

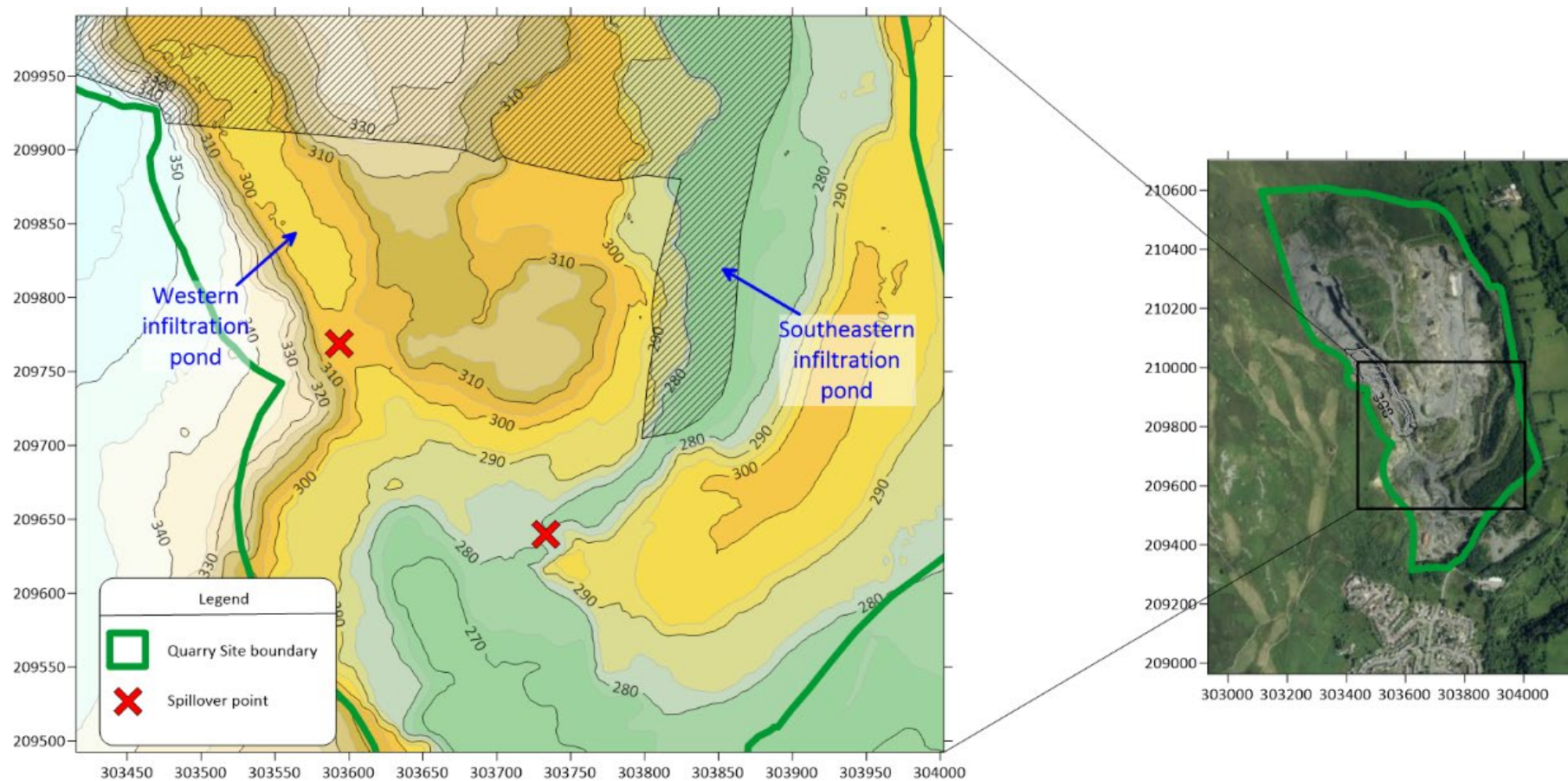


Figure 9.24 Location of spillover points from the eastern and western arm



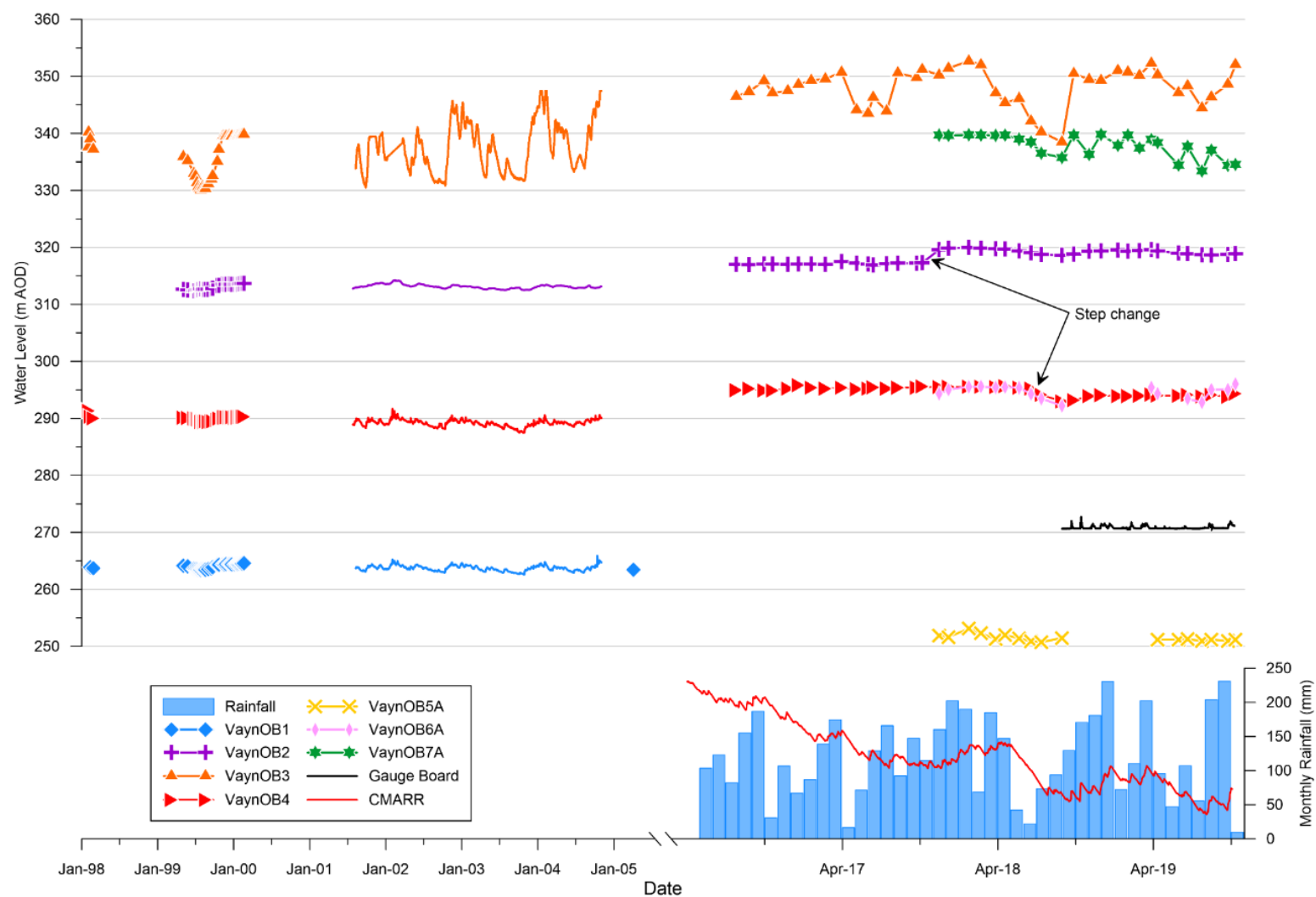


Figure 9.25 Dowlais limestone groundwater hydrographs

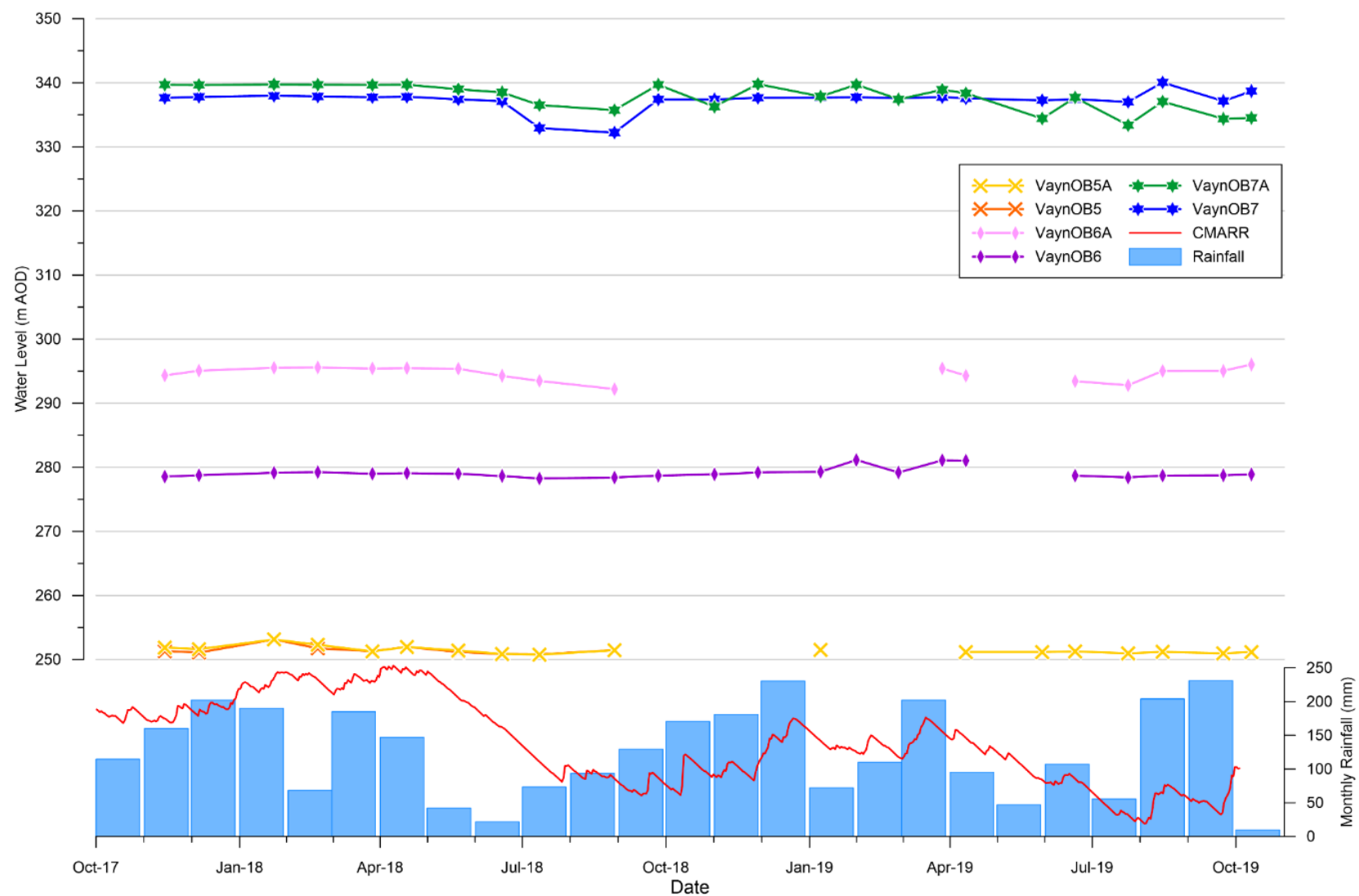


Figure 9.26 Abercriban Oolite and Dowlais limestone groundwater hydrographs



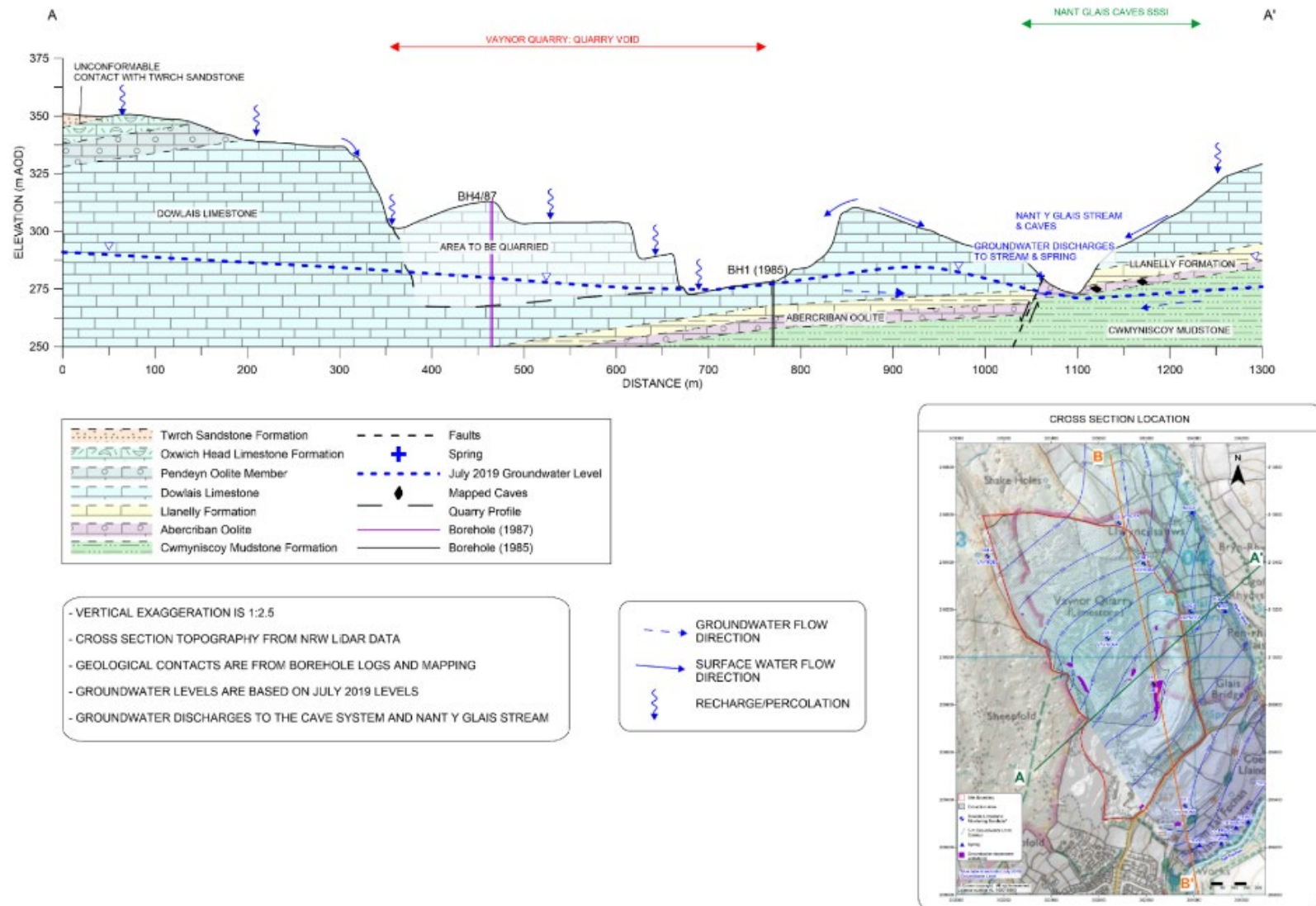


Figure 9.27 Conceptual hydrogeological cross section running east-west

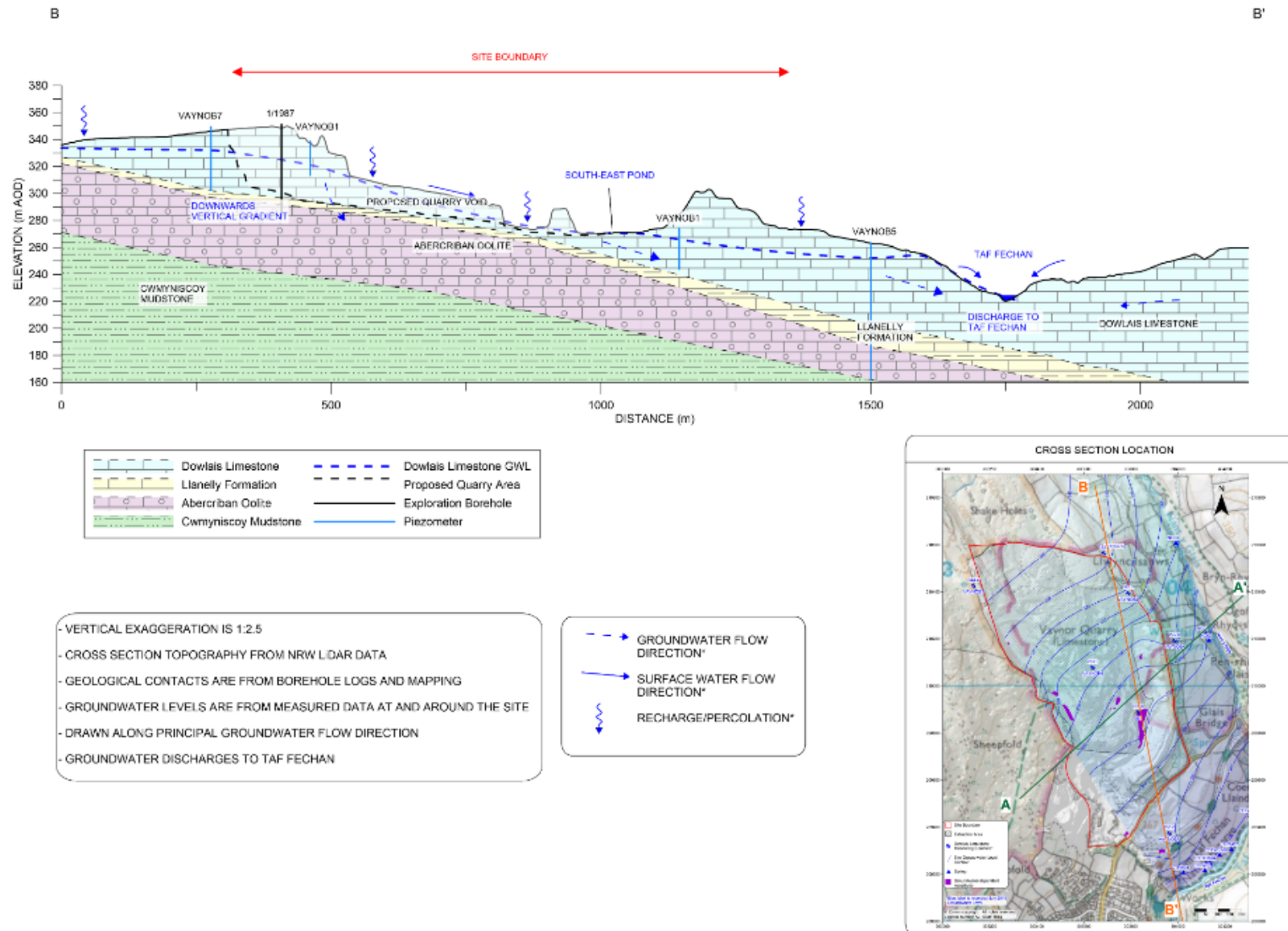


Figure 9.28 Conceptual hydrogeological cross section running north-south