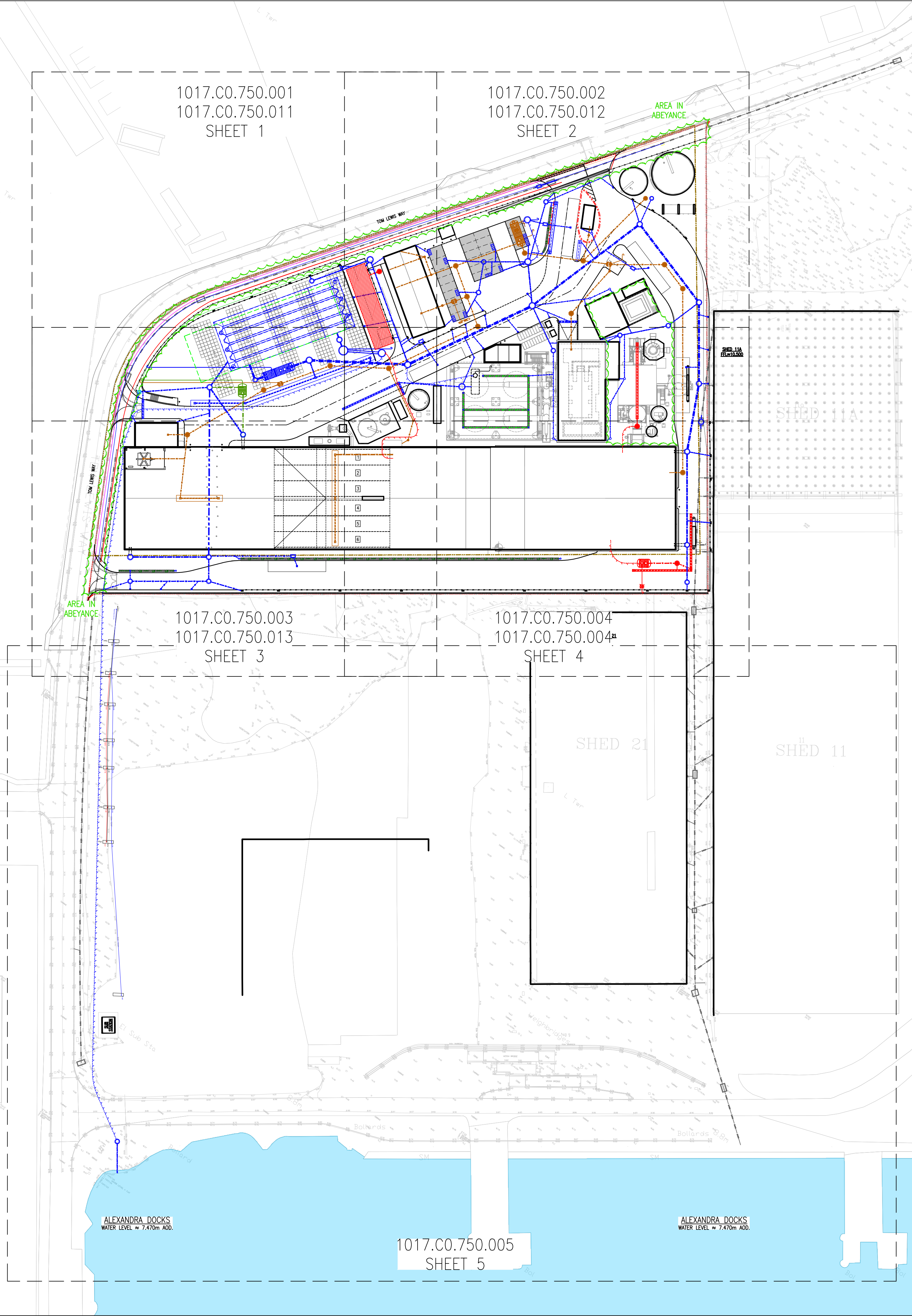


PRELIMINARY



LEGEND:

- PROPERTY BOUNDARY
- PLANNING BOUNDARY
- SURFACE WATER MANHOLE
- RAINWATER HARVESTING WATER MANHOLE
- SURFACE PUMP STATION
- SEPARATOR
- PRIVATE SURFACE WATER SEWER
- PRIVATE RAINWATER HARVESTING SEWER
- SURFACE WATER SEWER RISING MAIN
- ROAD GULLY
- SURFACE WATER DRAINAGE CHANNEL
- SURFACE WATER TRASH BOX
- SYPHONIC DOWNPIPES & LATERALS BY SPECIALIST
- RAINWATER HARVESTING TANK
- LINED LAND DRAIN
- POROUS PAVING DRAINAGE CONNECTION UNITS, PERMAVOID - LENGTH & WIDTH TBC
- LINED BLOCK POROUS PAVING
- KERBDRAIN (ACO OR SIMILAR)
- KERB DRAIN ACCESS BOX
- CAST IRON OR PCC CONCRETE SEWER
- SURFACE WATER INSPECTION CHAMBER (PIC)
- EXISTING SURFACE WATER DRAINAGE
- ATTENUATION TANK (WEHOLITE)
- SURFACE WATER RAIN WATER DOWN PIPE
- FOUL WATER MANHOLE
- TRADE EFFLUENT WATER MANHOLE
- PRIVATE FOUL WATER SEWER
- FOUL WATER RISING MAIN
- TRADE EFFLUENT RISING MAIN
- SEPARATOR
- FOUL GULLY (INTERNAL)
- FOUL GULLY (EXTERNAL)
- SOIL VENT PIPE (SVP)
- STUB STACK (SS)
- FOUL INSPECTION CHAMBER (PIC)
- TRADE EFFLUENT DRAINAGE CHANNEL
- TRADE EFFLUENT TRASH BOX
- TRADE EFFLUENT GULLY (EXTERNAL)
- TRADE EFFLUENT GULLY (INTERNAL)
- FOUL LINEAR DRAINAGE CHANNEL
- TRADE EFFLUENT STORAGE TANK
- FOUL TREATMENT PLANT
- TRADE EFFLUENT STORAGE TANK (DETAILS TO BE DEVELOPED WITH SEC)

SAFETY HEALTH AND ENVIRONMENTAL INFORMATION

IN ADDITION TO THE HAZARD/RISKS NORMALLY ASSOCIATED WITH THE TYPES OF WORK DETAILED ON THIS DRAWING, NOTE THE FOLLOWING RISKS AND INFORMATION.

RISKS LISTED HERE ARE NOT EXHAUSTIVE. REFER TO DESIGN ASSESSMENT FORM NO.

CONSTRUCTION

DEMOLITION

FOR INFORMATION RELATING TO USE, CLEANING AND MAINTENANCE SEE THE HEALTH AND SAFETY FILE

IT IS ASSUMED THAT ALL WORKS WILL BE CARRIED OUT BY A COMPETENT CONTRACTOR WORKING, WHERE APPROPRIATE, TO AN APPROVED METHOD STATEMENT.

NOTE:

- THIS DRAWING IS TO BE READ IN CONJUNCTION WITH ALL OTHER ASSOCIATED FAIRHURST DRAWINGS, SPECIFICATIONS & TOPOGRAPHICAL SURVEY BY CITY SURVEYS LTD FOR THIS PROJECT.
- SHOWN HAS BEEN BASED UPON INFORMATION SUPPLIED BY SEC. DRAWING NO. 1017.D2.001.D01 REV: 03 & 1017.D4.251.101 146083-NWE-HP1537-BUR-05-ULF-STR-DRW-116000-A1-C3 CITY SURVEY LTD: CSGP007435-SU-DRG-004 - 006 WITH TRIAL HOLE INFORMATION

ITEMS REVISED

AREA IN ABEYANCE

01	14.12.2022	TD	JDF	BASE LAYOUT INFORMATION & DRAINAGE UPDATED. NOT CLOUDED FOR CLARITY.	MJT
00	18.01.22	TD	JDF	FIRST ISSUE.	MJT
REV	DATE	DRAWN BY	CHECKED BY	DESCRIPTION	APPROVED BY

OWNER:

RDF ENERGY NO. 1 LTD

TOM LEWIS WAY, ALEXANDRA DOCK
NEWPORT, WALES
UK NP20 2WF
TELEPHONE :+44 01782 384898

SPONSOR:

AVIVA

ST HELEN'S, 1 UNDERSHAFT
LONDON, EC3P 3QD
UK, VAT REG NO. 220227168
TELEPHONE :+44 (0)207 809 6000

PROJECT MANAGER:

CoGen

BLTYE HOUSE, BLYTHE PARK,
CRESSWELL, STOKE ON TRENT,
STAFFORDSHIRE ST11-9RD, UK
TELEPHONE :+44 01782 384898

CONTRACTOR:

SCANDINAVIAN ENERGY CONTRACTOR

OTDEVANG 39-41
DK 3450 ALLERØD, DENMARK
PHONE :+45 3226 8401
EMAIL :WWW.SECONTRACTOR.DK

PROJECT:

NEWPORT ENERGY FROM WASTE PLANT

SUB-CONTRACTOR:

FAIRHURST

ONE HOUSE
WISSE GREEN
WATFORD
WD14 4HP
TELEPHONE :+44 (0)1923 210 460
EMAIL :newport@fairhurst.co.uk

SUBJECT:

SITE DRAINAGE OVERALL LAYOUT

SCALE:

A1 = 1:750
A3 = 1:1500

SEC DWG.NO.:

1017.CO.750.000

PROJECT NO. GR. NO. SH. REV.

THIS DRAWING, TOGETHER WITH ITS SUPPLEMENTS, IS THE PROPERTY OF SEC AND SUBJECT TO COPYRIGHT PROTECTION. THIS MATERIAL MUST NOT, EITHER WHOLLY OR PARTLY, BE COPIED, REPRODUCED, MADE PUBLIC OR IN ANY OTHER WAY MADE AVAILABLE TO A THIRD PARTY WITHOUT WRITTEN CONSENT FROM SEC

1017.CO.750.000