



SNOWDONIA VISUAL IMPACT PROVISION PROJECT

CILFOR SHAFT CONSTRUCTION

C0233-HUK-GES-IS-PL-W-0001

Project No: 9.100.1.233	Issue: Rev P01
	Date: 23/03/2023

	Name	Position (Role)	Signature	Date
Prepared by	Zuzanna Sykes	Administrator		23/03/2023
Approved by:	David Grantham	Environmental & Consents Manager	<i>D. J. Grantham</i>	23/03/2023
Accepted:	Lars Bayer	Project Director		23/03/2023

Revision	Date	Prepared	Checked	Approved	Reason for Issue
P01	23/03/2023	Z Sykes	D. Grantham	L Bayer	For Information

Uncontrolled when reproduced by any means – refer to Themis for controlled copy.

You must confirm that you hold the latest version before using this document for its intended purpose



FS 29825

EMS 70489

OHS 531558

ENMS 632421

VC 653436

9.100.1.233	Cilfor Shaft construction		
SNOWDONIA Visual Impact Provision Project	C0233-HUK-GES-AS-PL-W-0001	Rev	P01
		For Information	

Contents

- 1.0 Brief Method Statement & Sequence Drawings**
- 2.0 Cilfor Shaft Construction Materials**
- 3.0 Estimated water abstraction during shaft construction**
- 4.0 Cilfor Shaft Construction Programme Summary**

9.100.1.233	Cilfor Shaft construction		
SNOWDONIA Visual Impact Provision Project	C0233-HUK-GES-AS-PL-W-0001	Rev	P01
		For Information	

1.0 Brief Method Statement & Sequence Drawings

The Cilfor shaft construction sequence is shown schematically in Figures 1 – 3 below. The shaft will be approximately 64m deep with an outer diameter of 16.3m and an inner diameter of 12.5m on completion.

Cilfor shaft-construction is considered in two phases:

- Phase one will construct a circular secant-pile-wall to cut off the soft and wet ground conditions in the superficial deposits (Peat, Clay, Sands and Gravel, 4 to 8m deep) overlying the competent mudstone;
- Phase two will excavate rock in the competent mudstone which will be pre-treated with grout injections to control potential water infiltration through possible fissures and voids.

At the start of the works a raised working platform 5.0m above ground level will be constructed made of unbound aggregates from local quarries.

The raised working platform will be used by two to four drilling-rigs to drill down into the bedrock to pressure-grout fissures or voids present in the underlying mudstone. This will create a grout curtain wall and shaft base with low permeability ground needed for shaft sinking (see Figure 1 below).

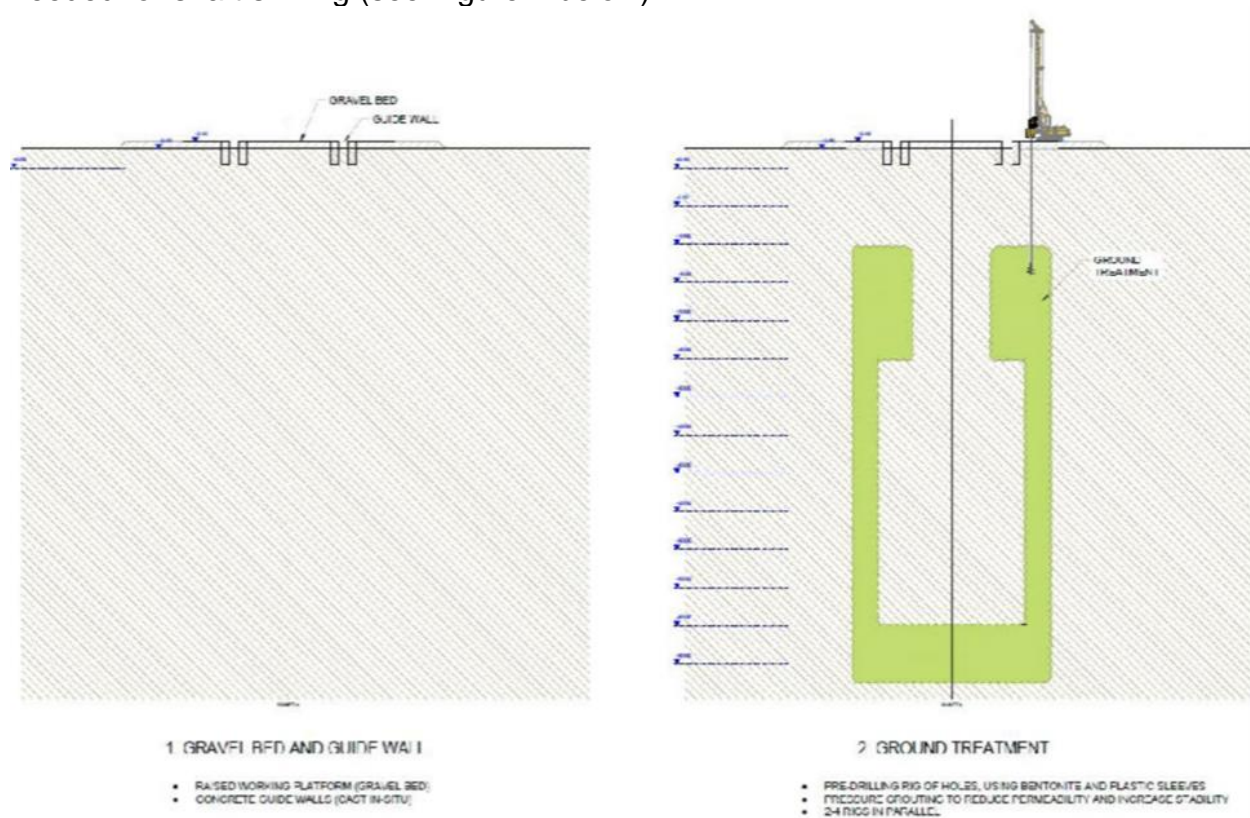


Figure 1

9.100.1.233	Cilfor Shaft construction		
SNOWDONIA Visual Impact Provision Project	C0233-HUK-GES-AS-PL-W-0001	Rev	P01
		For Information	

A minimum 10% of the grout injection holes will be re-drilled for post grouting permeability testing. Drilling of grout injection holes and permeability testing holes shall be by water flush methods only (i.e, rotary, rotary percussive or down hole hammer). The grouting shall be by means of open hole injections only.

After ground treatment a circular secant-pile wall will be constructed tied together by a capping-beam at the top. This will limit groundwater ingress during shaft excavation through water logged superficial deposits. The concrete secant piles will be made with full length temporary steel casings to contain liquid concrete while it hardens (see Figure 2 below).

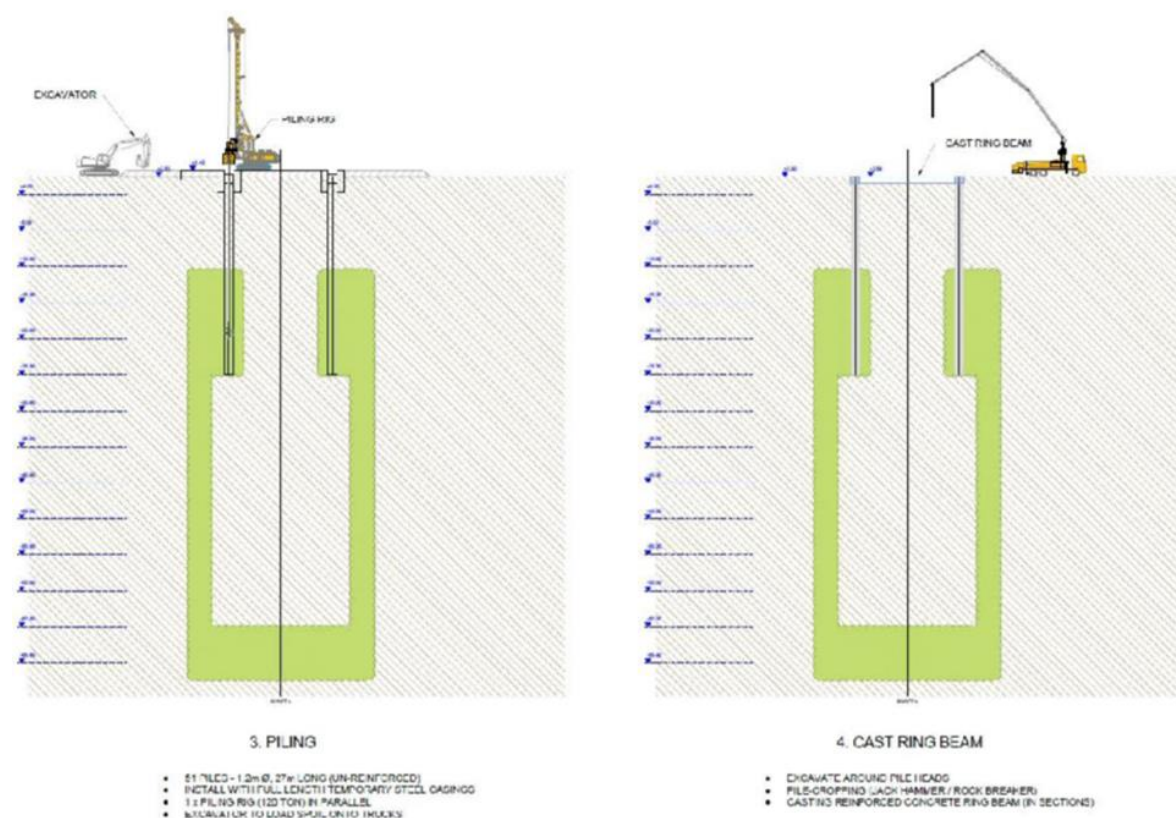


Figure 2

A pump-test will be undertaken inside the cut-off shaft prior to excavation. The expected volume of water-seepage during the excavation is between 2 - 5m³/hr (increasing with depth). The resulting permeability of the mudstone is tested by re-drilling some of the holes during the grouting,

The phase one excavation of the upper part of the shaft (within the secant piles):

- will be progress downwards in vertical increments of up to 4m. A smoothing layer of sprayed concrete (shotcrete) will be applied to the secant pile wall in the shaft and a cast in situ reinforced concrete lining constructed;
- the shaft base perimeter will be strengthened with a reinforced concrete circular support beam tied into the grouted zone by sub-horizontal rock bolts.

9.100.1.233	Cilfor Shaft construction		
SNOWDONIA Visual Impact Provision Project	C0233-HUK-GES-AS-PL-W-0001	Rev	P01
		For Information	

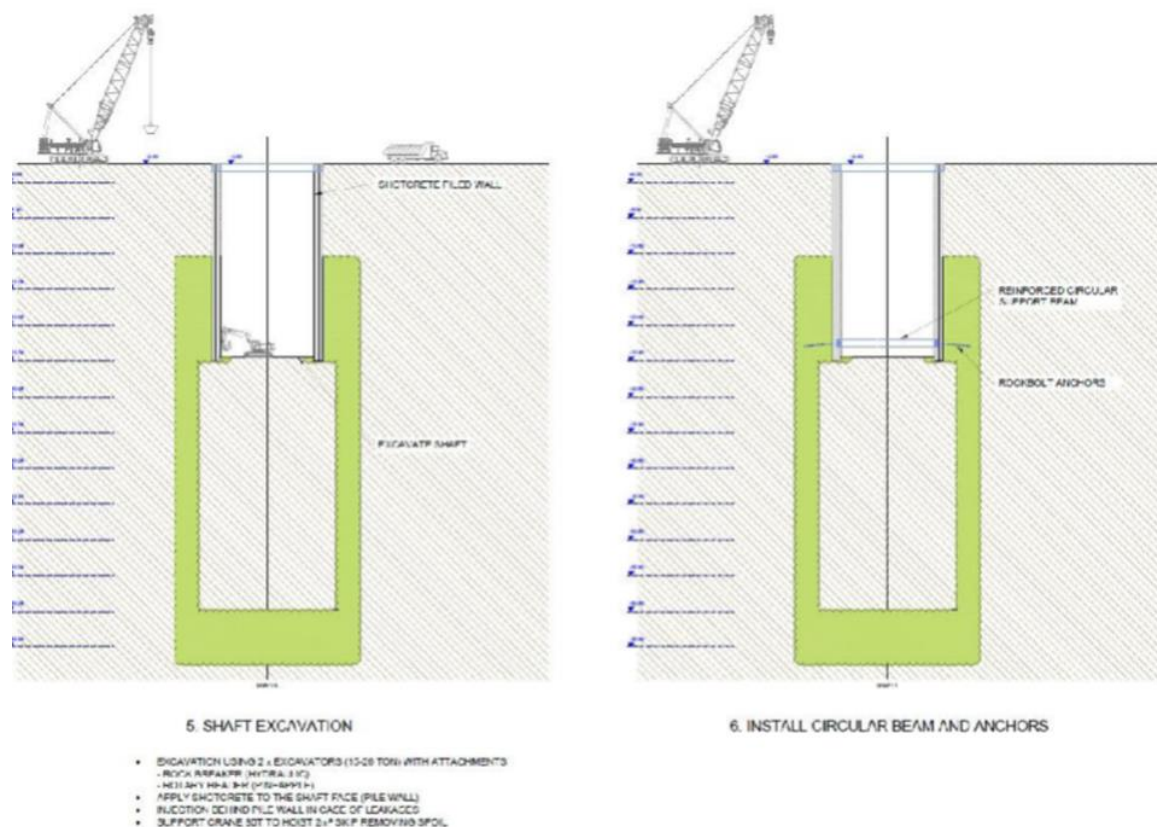


Figure 3

The phase two excavation of pre-treated rock (see Figure 4 and 5 below):

- will be progress downwards in vertical increments of up to 4m;
- to 40.0m below ground level the shaft sides will be supported by spot rock bolting as required;
- from 40.0m to 60.0m below ground level the shaft sides will be supported by sub-horizontal rock bolting on a regular grid;
- on reaching the base of the shaft a cast in situ reinforced concrete base slab will be constructed. This will have an underlying drainage layer and blinding and overlaying mass concrete fill. The underside of the concrete slab will be approximately 63.3m below ground level;
- after casting the permanent base-slab the sides of the excavation will receive a watertight membrane and geotextile, and a cast in situ reinforced concrete lining will be constructed (slip-forming up to the top).

9.100.1.233	Cilfor Shaft construction	
SNOWDONIA Visual Impact Provision Project	C0233-HUK-GES-AS-PL-W-0001	Rev P01
		For Information

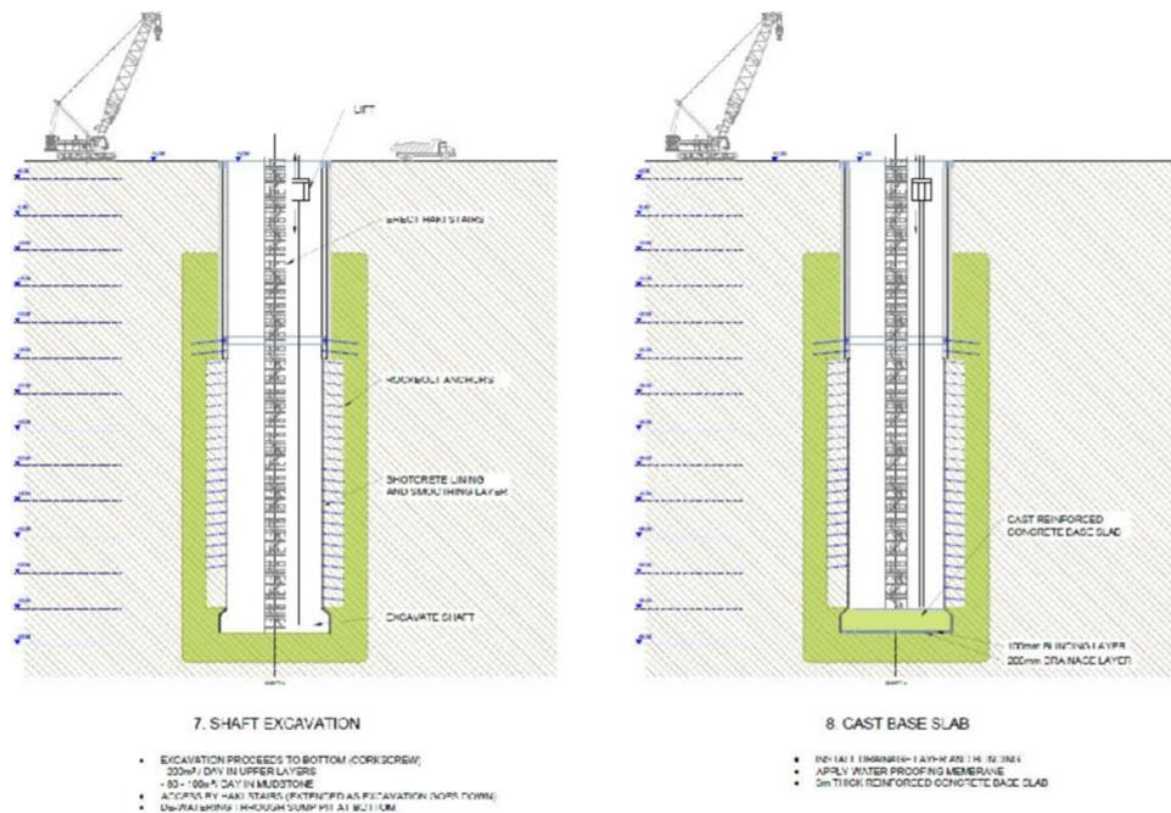


Figure 4

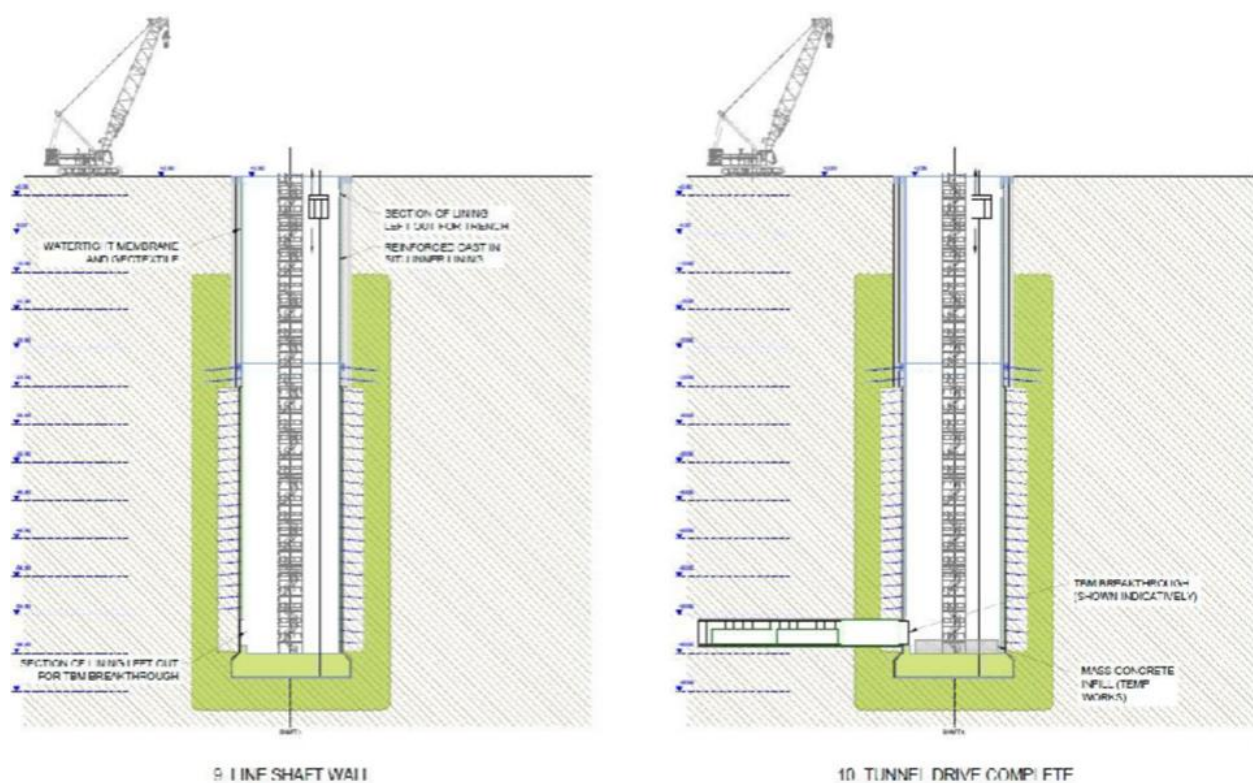


Figure 5

9.100.1.233	Cilfor Shaft construction		
SNOWDONIA Visual Impact Provision Project	C0233-HUK-GES-AS-PL-W-0001	Rev	P01
		For Information	

2.0 Cilfor Shaft Construction Materials

	Use	Material	Quantity	Specifications	Method of use	Contact with soil / groundwater	Programme
1	Ground improvement Shaft	Grout (note 1)	411 m ³	Ultra Fine Cement	Jet Grouting (Injections) from above ground.	Y	Start 08.2023 End 02.2024
2	Ground improvement TBM reception	Grout (note 1)	66 m ³	Ultra Fine Cement	Jet Grouting (Injections) from above ground.	Y	Start 08.2023 End 02.2024
3	Secant pile wall	Concrete (note 2)	1939 m ³	Male pile: C32/40 Female pile: C8/10	Bored piles in-situ concreted.	Y	Start 02.2024 End 06.2024
4	Excavation	Shotcrete (note 3)	1930 m ²	Shotcrete. 24m - 69 m = 35m Area Ø17.5m	Spraying against Ground improvement	N	Start 07.2024 End 10.2024
5	Mass Concrete Base slab	Concrete (note 2)	240 m ²	C28/35 Area approximately 240 m ²	Base slab in-situ concreted.	Y	Start 11.2024 End 11.2024

Notes.

1. The ground improvement grouts will be supplied by Zublin AG UK
2. The concrete will be supplied by TG Concrete and Cambrian Services
3. The annulus grout and shotcrete concrete additives supplied by Normet

3.0 Estimated water abstraction during shaft construction

The Cilfor shaft construction will involve extensive ground improvement works to reduce the permeability of the ground that the shaft is excavated into. Although shaft walls are inserted into the competent mudstone some water will enter the construction works through faults and fissures. During the 5 month excavation the volume of water expected to seep into the shaft will range between 50 - 120m³/day. During excavation the flow into the shaft will be controlled by:

- only exposing a small section of rock-face as we excavate down;
- apply rocknails and shotcrete, and possibly do additional injections when required.

Once the shaft is excavated a waterproofing membrane and permanent inner lining will be installed from the bottom of the shaft to the top of the shaft. Once the shaft is lined it is expected to be effectively water tight.

9.100.1.233	Cilfor Shaft construction		
SNOWDONIA Visual Impact Provision Project	C0233-HUK-GES-AS-PL-W-0001	Rev	P01
		For Information	

4.0 Cilfor Shaft Construction Programme Summary

Activity	2023				2024				2025			
	Q1	Q2	Q3	Q4	Q1	Q2	Q3	Q4	Q1	Q2	Q3	Q4
Additional GI	■											
Platform Construction		■										
Ground Treatment			■	■	■							
Secant Piling					■	■						
Pump-testing							◆					
Shaft excavation							■	■				
Shaft permanent lining								■	■			
TBM reception									■	■		
Shaft cover slab										■	■	
Watervolumes												
Pump-test	single event 10-20 m3						◆					
Shaft excavation	50-120m3/day for 3-5 months						■	■				
TBM reception	single event 20 m3								◆			