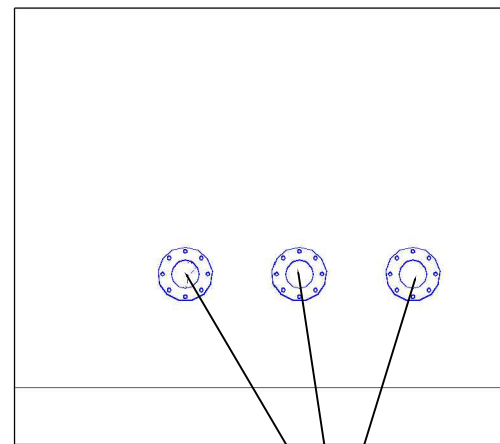
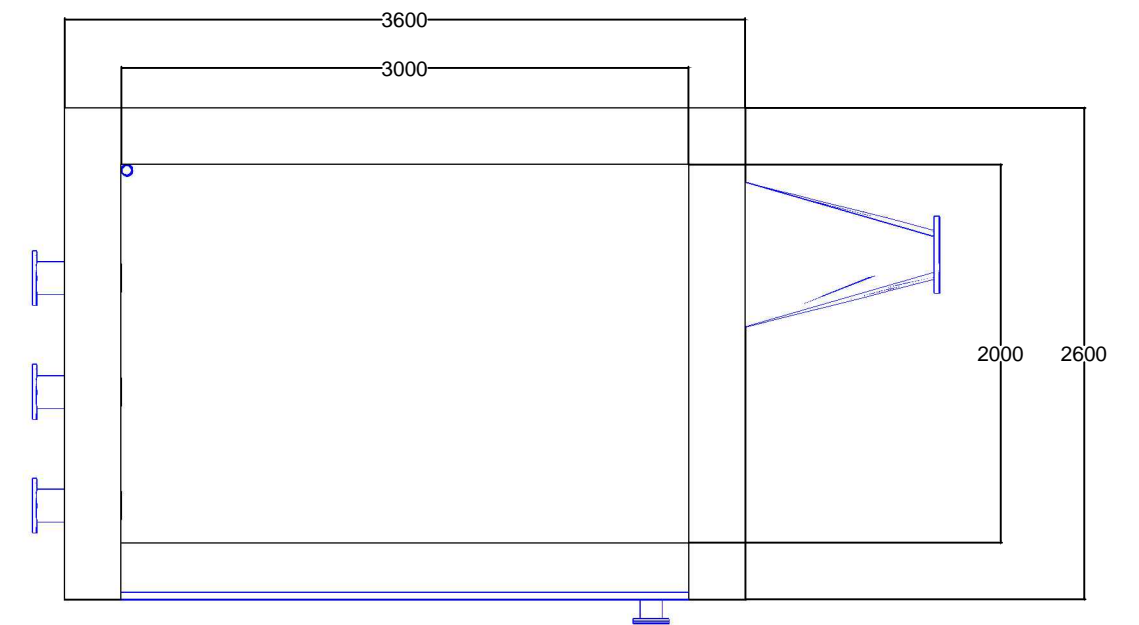
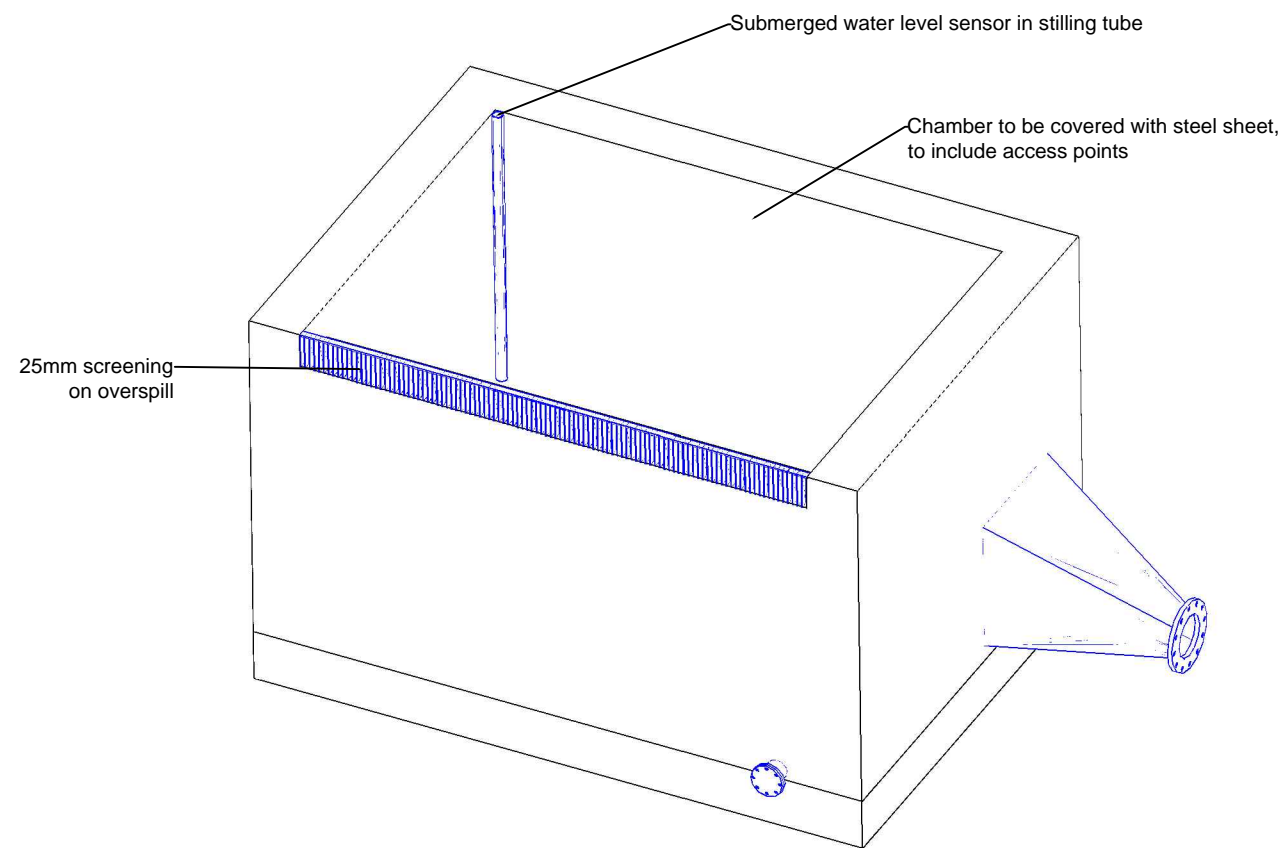
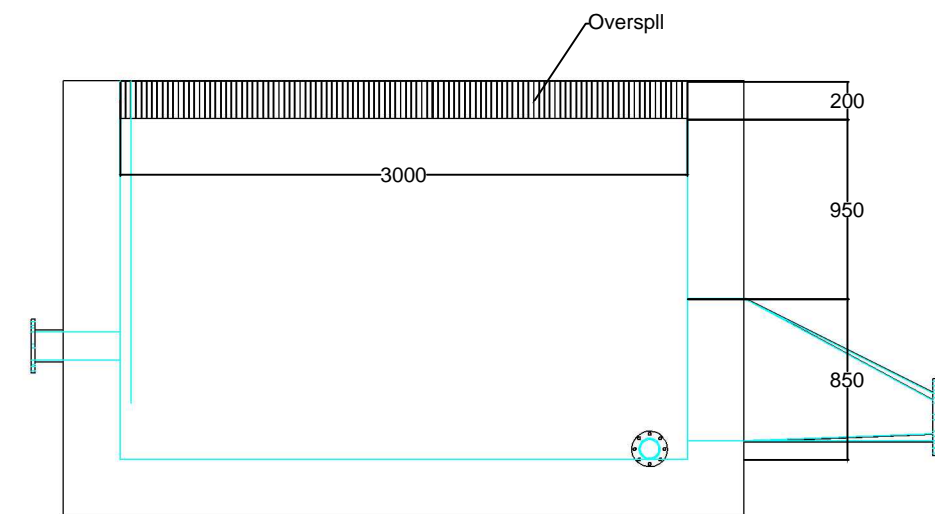


Square to round reducer connects to a 250mm hydro penstock

100mm camber drain point



3 x DN200 water input points, one from each intake



- Notes:
- Header tank designed for 48lps peak hydropower flow.
 - Storage capacity is 9m³: 188s at design flow and control level.
 - A rocky ramp spillway is needed between the chamber and the stream to accommodate overflowing water.
 - Spillway screen design indicative only.
 - Structure will be a designated Confined Space. Regular entry is not anticipated. An access plan is required. The chamber cover should be designed accordingly.

Site Address:
Aberdunant Hall Holiday Park
Prenteg
Porthmadog
Gwynedd
LL49 9SR

Site: Aberdunant
Scale: 1:40 at A3
Drawn by: D. Needle
Date: 01/03/2023
Version: 1.3

Header Chamber

