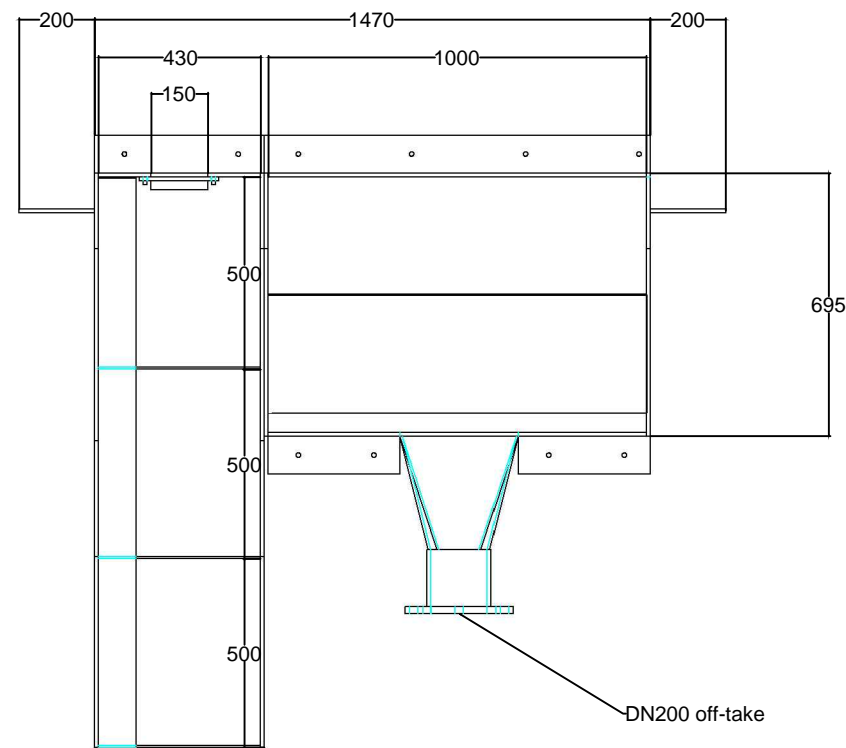
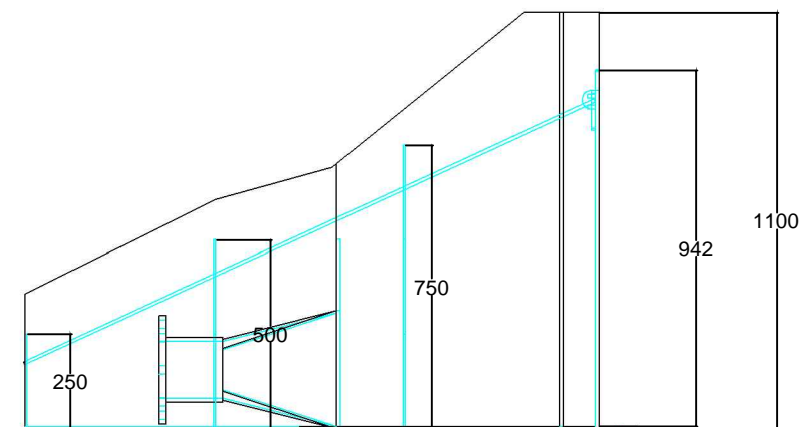


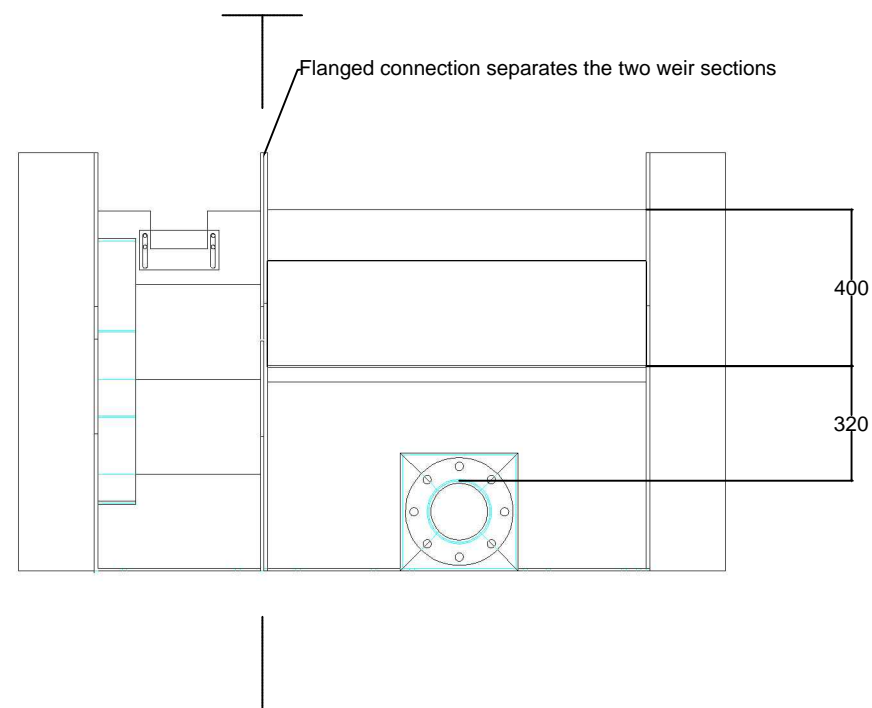
PLAN



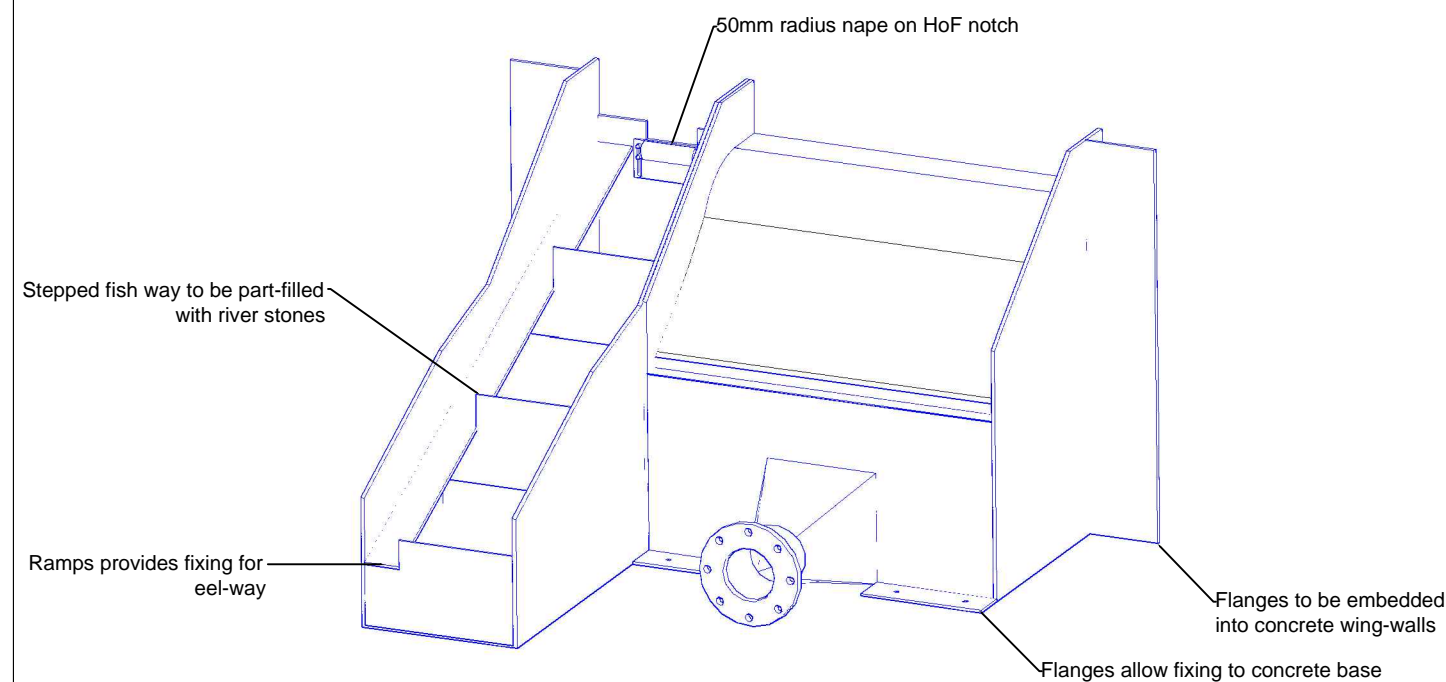
ELEVATION 1



DOWNSTREAM ELEVATION



ISOMETRIC



Notes:

1. Intake screen: quarter height high capacity coanda with 3mm bar spacing.
2. Weir crest level varies by location.
3. Design flow: 48lps over three intakes.
4. 70% abstraction over Q95.
5. Variable hand-off-flow (HoF) notch (150mm [w] x up to 50mm [d] provides versatility in deployment. This notch is capable of passing 0-5lps.
6. Eel-way provision allows for installation of a 100mm proprietary brush board.
7. A plunge pool (minimum depth 300mm) is to be formed beneath each intake using locally won stones.
8. Positioning the hydro off-take centrally to the abstraction screen minimises bank disruption at each location and aids standardisation.
9. Stainless steel fabrication.
10. The abstraction and compensation weir sections are expected to be fabricated separately to aim maneuverability.

Site: Aberdunant
Scale: 1:20 at A3
Dimensions in mm
Drawn by: D. Needle
Date: 26/04/2023
Version: 1.5

Intake

