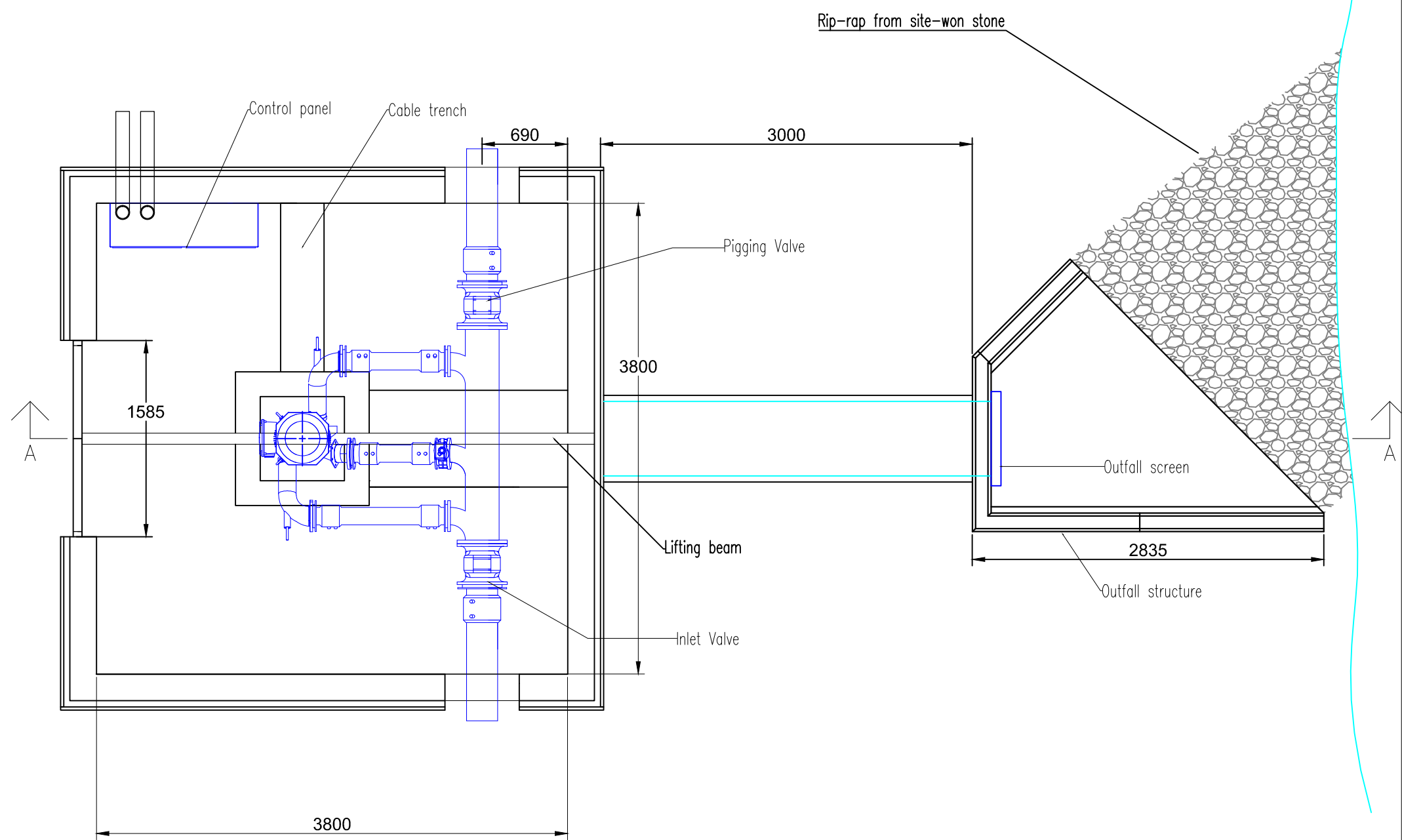
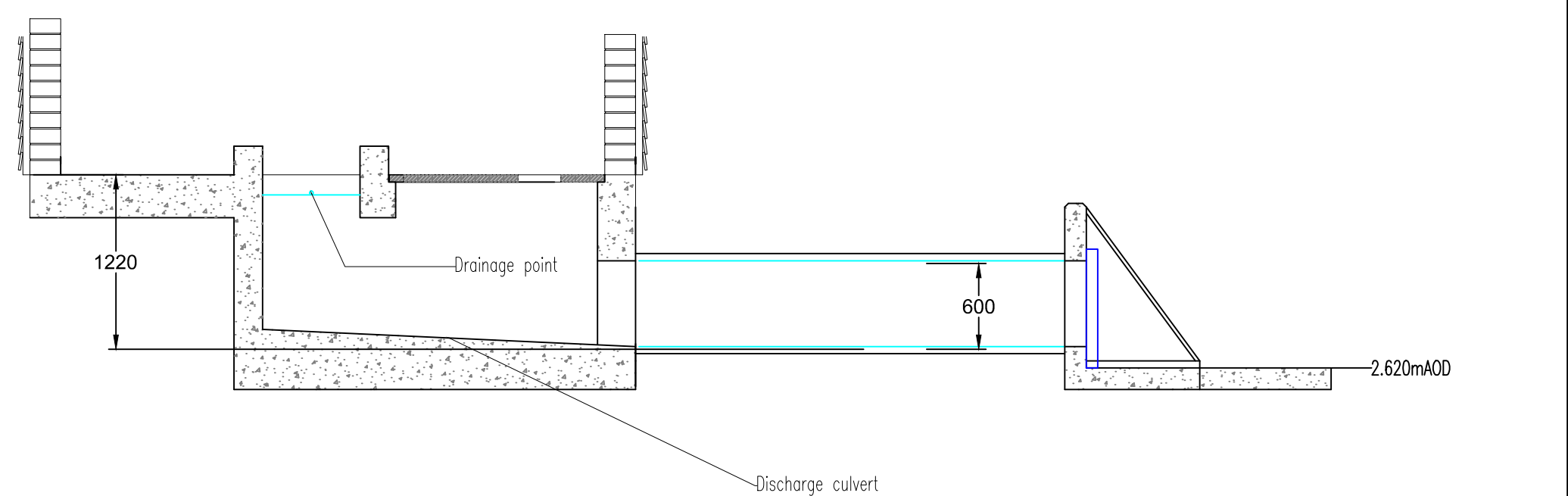


Plan of Plant



Section A-A



- Notes:
- 1. Outfall positioned to direct flow at approximately 45 degrees to the watercourse.
 - 2. Rip-rap reduces water velocity on approach to watercourse.
 - 3. Outfall screened to 40mm apertures.
 - 4. Location: NGR SH 58938 41876.

Site: Aberdunant
Scale: 1:40 at A3
Dimensions in mm
Drawn by: D. Needle
Date: 24/04/2023
Version: 1.5

Powerhouse and Outfall:
Plan and Section

