

Year 2022
Quarter 3

First day of quarter 01/07/2022
Last day of quarter 30/09/2022

Date of first Sunday for which 4 or more days in the following week fall within the quarter 03/07/2022
Date of last Sunday for which 4 or more days in the following week fall within the quarter 25/09/2022
Number of weeks within quarter 13

W1 Concentrations

Weeks run from Sunday to the following Saturday - all weeks with four or more days within the quarter are reported
 Uncertainty of measurement only applied to values exceeding permitted limit.

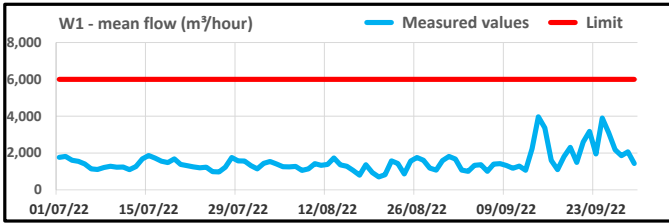
Parameter	Weekly average concentrations in mg/l, reported as measured and with uncertainty at limit removed																													
	Suspended Solids	Suspended Solids - Unc.	COD	COD - Unc.	BOD	BOD - Unc.	Sulphides	Sulphides - Unc.	Thiocyanate	Thiocyanate - Unc.	Cyanide	Cyanide - Unc.	PAH	PAH - Unc.	Phenols	Phenols - Unc.	Ammonia + Nitrite + Nitrate	Ammonia + Nitrite + Nitrate - Unc.	Iron	Iron - Unc.	Lead	Lead - Unc.	Zinc	Zinc - Unc.	Nickel	Nickel - Unc.	Total Chromium	Total Chromium - Unc.	Total Hydrocarbons	Total Hydrocarbons - Unc.
Limit	150		220		20		0.1		4		0.1		0.05		0.5		50		5		0.5		2		0.5		0.5		5	
Uncertainty (at limit)	54		23.6				0.01		0.4		0.01				0.05		5		0.5		0.05		0.08		0.05		0.05		1	
Week commencing																														
03 July 2022	78	45	-	-			0.01		3.65		0.02		0.001		0.08		14		3.71		0.05		1.0		0.05		0.04		2.8	
10 July 2022	53	76	-	-			0.02		4.80	4.40	0.03		0.002		0.12		16		1.73		0.06		0.5		0.05		0.05		2.6	
17 July 2022	35	76	-	-			0.01		4.32		0.02		0.002		0.01		19		1.67		0.13		0.8		0.05		0.05		9.5	8.49
24 July 2022	44	47	-	-			0.01		3.83		0.04		0.027		0.01		24		3.45		0.05		0.9		0.05		0.05		3.9	
31 July 2022	50	35	-	-			0.01		0.13		0.03		0.020		0.01		22		1.59		0.10		0.3		0.07		0.07		5.3	
07 August 2022	45	34	-	-			0.01		0.20		0.05		0.004		0.01		31		2.93		0.08		0.6		0.06		0.06		3.8	
14 August 2022	71	49	-	-			0.01		0.13		0.06		0.049		0.01		30		6.73	6.23	0.06		0.4		0.06		0.06		1.7	
21 August 2022	55	41	-	-			0.01		0.02		0.03		0.036		0.01		31		3.27		0.08		0.6		0.07		0.07		4.1	
28 August 2022	83	64	-	-			0.42	0.41	0.52		0.03		0.000		0.01		22		6.36	5.86	0.05		0.8		0.04		0.04		5.2	
04 September 2022	65	29	-	-			0.02		0.43		0.05		0.005		0.29		37		6.87	6.47	0.06		1.4		0.06		0.06		2.1	
11 September 2022	46	34	-	-			0.01		0.10		0.02		0.073	0.07	0.01		29		3.58		0.07		0.5		0.08		0.07		3.9	
18 September 2022	50	40	-	-			0.01		0.09		0.03		0.002		0.01		32		3.20		0.07		0.6		0.07		0.07		4.6	
25 September 2022	44	36	-	-			0.01		0.04		0.03		0.011		0.01		27		4.89		0.07		1.2		0.07		0.07		2.7	
Number > Limit + Unc.		0		0		0		1		1		0		1		0		0		3		0		0		0		0		1

* The following Part A Notifications have been submitted for Q3:

Part A	Breach	Week Commencing	Date submitted
SSN_22_56A	W1 LSO CNS weekly average limit breach	10/07/2022	18/07/2022
SSN_22_57A	W1 LSO Oil weekly average limit breach	17/07/2022	26/07/2022
SSN_22_60A	W1 LSO Fe weekly average limit breach	14/08/2022	22/08/2022
SSN_22_63A	W1 LSO Fe weekly average limit breach	28/08/2022	05/09/2022
SSN_22_64A	W1 LSO sulphide weekly average limit breach	28/08/2022	05/09/2022
SSN_22_65A	W1 LSO Fe weekly average limit breach	04/09/2022	13/09/2022
SSN_22_67A	W1 LSO PAH weekly average limit breach	11/09/2022	21/09/2022

W1 Flow

		Average flow	
Daily mean	Minimum	702	m ³ /hour
	Maximum	3,966	m ³ /hour
	Limit	6,000	m ³ /hour
	No. > Limit	0	



Date	Parameter Average flow	
	Units	m ³ /hour
	Limit	6,000
01 July 2022		1,765
02 July 2022		1,817
03 July 2022		1,603
04 July 2022		1,547
05 July 2022		1,406
06 July 2022		1,141
07 July 2022		1,105
08 July 2022		1,213
09 July 2022		1,278
10 July 2022		1,231
11 July 2022		1,239
12 July 2022		1,094
13 July 2022		1,267
14 July 2022		1,679
15 July 2022		1,863
16 July 2022		1,720
17 July 2022		1,559
18 July 2022		1,478
19 July 2022		1,682
20 July 2022		1,383
21 July 2022		1,314
22 July 2022		1,249
23 July 2022		1,196
24 July 2022		1,233
25 July 2022		988
26 July 2022		972
27 July 2022		1,233
28 July 2022		1,756
29 July 2022		1,569
30 July 2022		1,567
31 July 2022		1,314
01 August 2022		1,141
02 August 2022		1,435
03 August 2022		1,541
04 August 2022		1,404
05 August 2022		1,252
06 August 2022		1,250
07 August 2022		1,268
08 August 2022		1,055
09 August 2022		1,139
10 August 2022		1,426
11 August 2022		1,329
12 August 2022		1,384
13 August 2022		1,727
14 August 2022		1,355
15 August 2022		1,280
16 August 2022		1,057
17 August 2022		796
18 August 2022		1,366
19 August 2022		940
20 August 2022		702
21 August 2022		820
22 August 2022		1,568
23 August 2022		1,430
24 August 2022		864
25 August 2022		1,565
26 August 2022		1,755
27 August 2022		1,606
28 August 2022		1,182
29 August 2022		1,068
30 August 2022		1,587
31 August 2022		1,818
01 September 2022		1,669
02 September 2022		1,076
03 September 2022		1,005
04 September 2022		1,326
05 September 2022		1,362
06 September 2022		1,008
07 September 2022		1,401
08 September 2022		1,423
09 September 2022		1,319
10 September 2022		1,171
11 September 2022		1,291
12 September 2022		1,068
13 September 2022		2,234
14 September 2022		3,966
15 September 2022		3,367
16 September 2022		1,596
17 September 2022		1,099
18 September 2022		1,807
19 September 2022		2,305
20 September 2022		1,491
21 September 2022		2,601
22 September 2022		3,171
23 September 2022		1,950
24 September 2022		3,902
25 September 2022		3,102
26 September 2022		2,169
27 September 2022		1,854
28 September 2022		2,064
29 September 2022		1,429
30 September 2022		1,867

W3 Concentrations

Weeks run from Sunday to the following Saturday - all weeks with four or more days within the quarter are reported.

Uncertainty of measurement only applied to values exceeding permitted limit.

Only sampled when flow present (generally after heavy rain).

**Weekly average concentrations in mg/l,
reported as measured (uncertainty not
taken into account)**

Parameter	Suspended Solids	Suspended solids - Unc	Total Hydrocarbons	Total Hydrocarbons - Unc
Limit	200		20	
Uncertainty (at limit)	72		4.4	
Week commencing				
03 July 2022				***
10 July 2022				***
17 July 2022				***
24 July 2022				***
31 July 2022				***
07 August 2022				***
14 August 2022	106		8.5	
21 August 2022				***
28 August 2022				***
04 September 2022	158		12.5	
11 September 2022	72		11.5	
18 September 2022				***
25 September 2022	30		1.2	
Number > Limit		0		0

**** No samples taken during this week;
due to low flow conditions effluent did not overtip weir to Abbey Beach Outfall.*

W4 Concentrations

Only sampled when flow present (generally after heavy rain).

Values reported as measured (uncertainty not taken into account)					
Parameter		Suspended solids (mg/l)	Total Fe (mg/l)	Soluble Fe (mg/l)	Oil and grease
Date	pH				
25 July 2022	7.9	54	4.2	0.2	5.4
17 August 2022	8.8	62	2.3	<0.1	0.1
05 September 2022	9.7	146	19.3	<0.1	2.1

W5 Concentrations

Uncertainty of measurement only applied to values exceeding permitted limit.

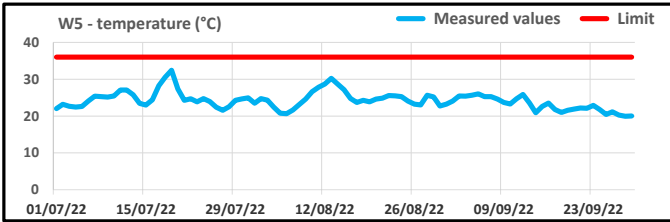
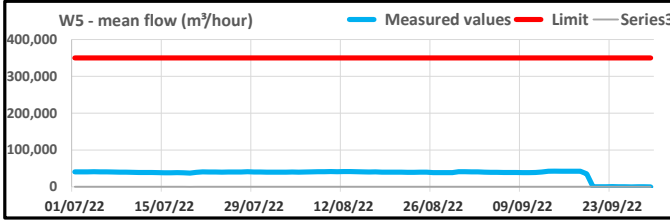
Suspended solids concentrations in mg/l, reported as measured (uncertainty not taken into account)				
Parameter	Inlet	Outlet	Difference	Difference - Unc.
Limit			20	
Uncertainty (at limit)			4.4	
Date				
01 July 2022	38	58	20	
06 July 2022	28	31	3	
13 July 2022	6	7	1	
20 July 2022	4	7	3	
28 July 2022	8	8	0	
03 August 2022	38	30	-8	*
10 August 2022	4	4	0	
17 August 2022	4	5	1	
24 August 2022	36	38	2	
31 August 2022	32	42	10	
07 September 2022	5	14	9	
14 September 2022	3	6	3	
21 September 2022	1	-	-	***
29 September 2022	0	-	-	***
Number > Limit				0

* Difference is compliant where inlet concentrations exceed outlet concentrations.

*** 3TA down for essential maintenance, hence no 3TA return water sample received.

W5 Flow and Temperature

		Daily mean flow	Temperature
Daily mean	Minimum	-133 m ³ /hour	19 °C
	Maximum	42,595 m ³ /hour	32 °C
	Limit	350,000 m ³ /day	36 °C
	No. > Limit	0	0



*** 3TA on shutdown for essential maintenance for 4 weeks from 20th September, hence no return flow to the Docks.

Date	Parameter		Average flow	Temperature
	Units	Limit	m ³ /day	°C
01 July 2022			40,740	22.0
02 July 2022			40,644	23.2
03 July 2022			40,480	22.6
04 July 2022			40,962	22.5
05 July 2022			40,670	22.6
06 July 2022			40,543	24.1
07 July 2022			40,069	25.4
08 July 2022			39,769	25.3
09 July 2022			39,711	25.2
10 July 2022			39,370	25.4
11 July 2022			39,077	27.1
12 July 2022			39,054	27.1
13 July 2022			39,043	25.8
14 July 2022			38,416	23.4
15 July 2022			38,167	23.0
16 July 2022			38,257	24.4
17 July 2022			38,401	28.2
18 July 2022			38,195	30.5
19 July 2022			37,422	32.4
20 July 2022			39,299	27.4
21 July 2022			40,496	24.3
22 July 2022			40,312	24.7
23 July 2022			40,044	23.9
24 July 2022			40,026	24.7
25 July 2022			40,356	23.9
26 July 2022			40,269	22.4
27 July 2022			40,343	21.6
28 July 2022			41,074	22.5
29 July 2022			40,194	24.3
30 July 2022			40,394	24.7
31 July 2022			39,996	24.9
01 August 2022			39,940	23.5
02 August 2022			39,900	24.7
03 August 2022			40,026	24.3
04 August 2022			40,382	22.4
05 August 2022			40,037	20.8
06 August 2022			40,394	20.6
07 August 2022			40,823	21.6
08 August 2022			41,260	23.1
09 August 2022			41,178	24.6
10 August 2022			41,320	26.6
11 August 2022			41,218	27.8
12 August 2022			41,343	28.7
13 August 2022			41,341	30.2
14 August 2022			41,081	28.7
15 August 2022			40,793	27.2
16 August 2022			40,337	24.8
17 August 2022			40,470	23.7
18 August 2022			39,924	24.3
19 August 2022			39,864	23.9
20 August 2022			39,660	24.6
21 August 2022			39,745	24.9
22 August 2022			39,557	25.6
23 August 2022			39,488	25.5
24 August 2022			39,783	25.3
25 August 2022			39,823	24.1
26 August 2022			38,785	23.2
27 August 2022			38,651	23.0
28 August 2022			38,561	25.6
29 August 2022			38,518	25.2
30 August 2022			41,112	22.7
31 August 2022			41,274	23.2
01 September 2022			40,742	24.1
02 September 2022			40,600	25.4
03 September 2022			39,994	25.4
04 September 2022			39,559	25.6
05 September 2022			39,386	26.0
06 September 2022			38,874	25.3
07 September 2022			39,175	25.3
08 September 2022			38,830	24.6
09 September 2022			38,562	23.7
10 September 2022			38,673	23.3
11 September 2022			38,828	24.7
12 September 2022			40,251	25.8
13 September 2022			42,476	23.5
14 September 2022			42,595	20.9
15 September 2022			42,318	22.6
16 September 2022			42,151	23.5
17 September 2022			42,420	21.8
18 September 2022			42,507	21.0
19 September 2022			35,219	21.6
*** 20 September 2022			350	21.9
*** 21 September 2022			62	22.2
*** 22 September 2022			6	22.1
*** 23 September 2022			577	22.9
*** 24 September 2022			320	21.8
*** 25 September 2022			366	20.5
*** 26 September 2022			-19	21.2
*** 27 September 2022			243	20.3
*** 28 September 2022			180	19.9
*** 29 September 2022			-133	20.0
*** 30 September 2022			113	19.4
			350,000	36
			350,000	36
			350,000	36