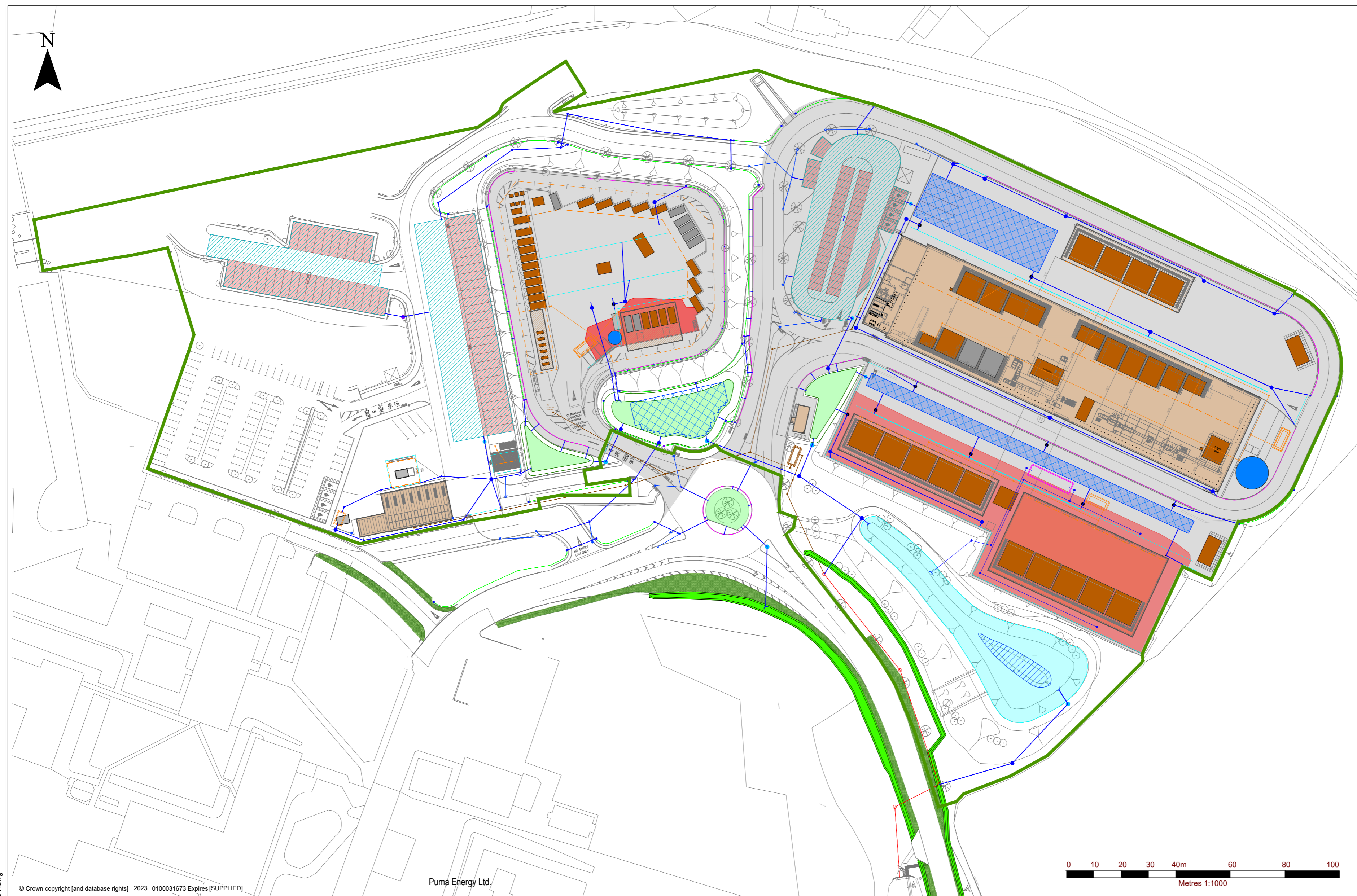


4:16.V00798.00039.13.006.1_DRAINAGE_LAYOUT.dwg



Key of Proposed Drainage Network

Existing Features

- Existing Filter Strip
- Existing Swale

Surface Water

- Surface Water Sewer

- Surface Water Access Chamber
- Surface Water Catch Pit
- Surface Water Flow Control Access Chamber
- Surface Water Chamber With Fire Water Shut Off Valve
- Surface Water Filter Drain

- Surface Water ACO Channel Drain or Similar Approved
- Surface Water ACO Kerb Drain or Similar Approved
- Surface Water Road Gully With Gully Lead
- Surface Water Headwall
- Versavoid Cellular Storage or Similar Approved

- Bioretention Systems
- Permeable sub-base 30% voids
- Pervious Pavement (permeable paving blocks)
- Detention Basin

- Pond
- Petrol/Oil Interceptor
- Rainwater Harvesting
 - RWH Sewer
 - RWH Access Chamber
 - RWH Headwall

- RWH Tank
- Foul Water
 - Foul Water Sewer
 - Foul Water Access Chamber
 - Waste Water Treatment Works (WWTW)

- Combined Water
 - Combined Water Sewer
 - Combined Access Chamber
 - Proposed Fire Water Area

NOTES

1. DRAWING IS BASED ON PERCY THOMAS DRAWINGS REF: PECO-CAP-PW-XX-DR-A-051100 REV C01 (27.01.22), PECO-CAP-PW-XX-DR-A-050002 REV T03 (28.01.22) AND PECO-CAP-PW-00-DR-A-910101 REV C03 (10.03.23)

2. DRAINAGE DETAILS TAKEN FROM CAPITA FIRE WATER RETENTION PLAN, REF: PECCO-CAP-PW-XX-DR-D-000528 REV P03, DATED: 20.05.22.

- LEGEND
- ENVIRONMENTAL PERMIT BOUNDARY
 - IMPERMEABLE SURFACE
 - BUILDING (IMPERMEABLE SURFACE)
 - PERMEABLE SURFACE
 - EXTERNAL COVERED BAYS
 - WASTE STORAGE BAY
 - SPARE STORAGE BAY
 - FIRE WATER STORAGE TANK



PEMBROKESHIRE COUNTY COUNCIL
ECO PARK
ENVIRONMENTAL PERMIT APPLICATION
DRAINAGE LAYOUT
DRAWING 006

Scale 1:1000 @ A2 Date MAY 2023