

**APPLICATION FOR AN ENVIRONMENTAL PERMIT
UNDER THE ENVIRONMENTAL PERMITTING
(ENGLAND AND WALES) REGULATIONS 2016
(AS AMENDED)**

NOISE MANAGEMENT PLAN



**PLATTS AGRICULTURE LIMITED,
MINERS PARK, LLAY INDUSTRIAL ESTATE,
LLAY, WREXHAM**

**ECL Ref: PLAT.01.02/NMP
June 2023
Version: Issue 3**

TABLE OF CONTENTS

1. INTRODUCTION	1
1.1. Requirement for a Noise Management Plan	1
2. DESCRIPTION OF THE SITE AND THE PROPOSED ACTIVITIES	3
2.1. Site Location and Settings	3
2.2. Description of the Proposed Activities	4
3. POTENTIAL SOURCES	5
3.1. On-Site Sources	5
3.2. Other Local Contributors of Noise Emissions	5
4. POTENTIAL SENSITIVE RECEPTORS	6
4.1. Consideration for Identifying Sensitive Receptors	6
5. OPERATIONAL AND PROCESS CONTROLS	9
5.1. General Control Measures	9
5.2. Planned Preventative Maintenance Regime	9
5.3. Noise Monitoring	9
5.4. Process Stages, Potential Emission Sources and Associated Risk Level	10
5.5. Emergency Scenario Contingency Measures	13
6. COMMUNITY LIAISON AND RESPONSE TO COMPLAINTS	14
6.1. Community Liaison	14
6.2. Response to Complaints	14
7. NMP REVIEW	17

Appendix I: Drawings

Appendix II: **Monitoring Recording Form**

LIST OF FIGURES

Figure 1: Indicative Site Location	3
Figure 2: Annual Wind Rose (2010-2019) – Hawarden Airport	6
Figure 3: Identified Human Receptors within 500m of the Facility Permit Boundary	7
Figure 5: Indicative Noise Monitoring Locations	10

LIST OF TABLES

Table 1: Proposed EWC to be Accepted	4
Table 2: Surrounding Land Uses	7
Table 3: Human Receptors within 500m of the Facility	8
Table 4: NMP Risk Assessment and Control Measures	11
Table 5: Emergency Scenario Contingency Measures	13

ACRONYMS / TERMS USED IN THIS REPORT

CCTV	Closed Circuit Television
EA	Environment Agency
ECL	Environmental Compliance Limited
EMS	Environmental Management System
EP	Environmental Permit
FLT	Fork Lift Truck
FPP	Fire Prevention Plan
FRS	Fire Rescue Service
Ha	Hectares
HGV	Heavy Goods Vehicle
NGR	National Grid Reference
NIA	Noise Impact Assessment
NMP	Noise Management Plan
NRW	Natural Resources Wales
NSR	Nearest Sensitive Receptors
OS	Ordnance Survey
Platts	Platts Agriculture Limited
PPMR	Planned Preventative Maintenance Routine
SLM	Sound Level Meter
SPL	Sound Pressure Level
The Facility	Platts Agriculture Waste Wood Processing Facility

DOCUMENT CONTROL

Date	Version	Section	Description	Prepared by	Approved by
Jan 22	Issue 1	All	All	ECL	CW
Apr 22	Issue 2	4.1	Potential Sensitive Receptors	ECL	CW
Jun 23	Issue 3	1.1.	Requirement for a Noise Management Plan	ECL	CW
		2.2	Description of the Proposed Activities		& AF
		5.3	Noise Monitoring		
		5.4	Process Stages, Potential Emission Sources and Associated Risk Level		
		5.5.	Emergency Scenario Contingency Measures		
		6.1	Community Liaison		
		6.2	Response to Complaints		

1. INTRODUCTION

1.1. Requirement for a Noise Management Plan

- 1.1.1. Environmental Compliance Limited (“ECL”) has been commissioned by Platts Agriculture Limited (“Platts”) to prepare a Noise Management Plan (“NMP”) to form part of the bespoke Environmental Permit (“EP”) application for a proposed wood waste processing facility, hereafter referred to as “the Facility” located in Llay Industrial Estate, Llay, Wrexham.
- 1.1.2. Platts propose to undertake one Specified Waste Operation as follows:
- storage of non-hazardous waste wood (classification 03 01 05) with subsequent treatment involving magnetic separation, screening, pulverising and baling to produce animal bedding material (including cubicle conditioner) for use within the agricultural livestock sector
- 1.1.3. Following correspondence with Natural Resources Wales (“NRW”), it has been requested that both a Noise Impact Assessment (“NIA”) and a Noise Management Plan are submitted as part of the Permit application. Consequently, a NIA has been undertaken (PLAT.01.02/NIA) and a NMP has been prepared to address NRW’s request.
- 1.1.4. The NIA (PLAT.01.02/NIA) was updated in response to NRW’s Schedule 5 Notice II and therefore, the updated NIA (Issue 3) should be read in conjunction with this NMP. The NIA concluded that noise generating activities at the Facility were unlikely to have any adverse impact on the nearest sensitive receptor (“NSR”) locations. Further calculations of the sound pressure levels (“SPL”) attenuation with distance determined that the contribution from on-site noise generating activities was below the background noise levels at the NSR locations and would not affect the ambient noise levels at these locations.
- 1.1.5. Consequently, the noise generating activities at the Facility can be considered insignificant, as long as there are no changes in ambient noise levels at the NSR locations. Nevertheless, Platts understand and accept responsibility for controlling noise impact at the Facility and in order to ensure the controls in place at the Facility are documented and as robust as possible, this NMP has been prepared in accordance with the Environment Agency (“EA”) online guidance ‘Noise and vibration management; environmental permits’¹(in the absence of equivalent NRW guidance).
- 1.1.6. The NMP has been prepared to demonstrate Platts competence and commitment to controlling noise pollution. The NMP outlines all activities which have the potential to cause noise nuisance and details the systems and controls in place to manage that risk effectively.
- 1.1.7. The NMP addresses the following issues:
- the activities which could cause noise nuisance;
 - identification of NSR;
 - process controls and procedures;
 - monitoring regime;

¹ EA Online Guidance, ‘Noise and vibration management: environmental permits’, available at: <https://www.gov.uk/government/publications/noise-and-vibration-management-environmental-permits/noise-and-vibration-management-environmental-permits>, updated January 2022, accessed March 2023.

- emergency scenarios;
- potential corrective actions;
- complaints procedure; and
- record keeping.

1.1.8. The NMP provides a management framework comprising of proactive and reactive measures to manage and control noise emissions from the Facility. This proactive approach will facilitate the ongoing development of operational procedures and controls as part of an on-going commitment to improving environmental performance. Reactive procedures will also be established within the NMP for the logging, evaluation, and implementation of corrective actions in the event of any noise related complaints being received.

1.1.9. Platts understand and accept responsibility for controlling noise impact from site activities and it is the Managing Director who is responsible for overseeing the effective implementation of the NMP and ensuring compliance is maintained.

2. DESCRIPTION OF THE SITE AND THE PROPOSED ACTIVITIES

2.1. Site Location and Settings

- 2.1.1. The Facility is located on Miners Park, Llay Industrial Estate, Llay, Wrexham, LL12 0PJ. The Facility is centred on the Ordnance Survey ("OS") National Grid Reference ("NGR") 332077 356370 and will occupy an area of approximately 1.56 Hectares ("Ha").
- 2.1.2. The Site Location Plan (Drawing Reference PLAT.01.02-01) details the proposed EP boundary (outlined in green) and is provided in Appendix I of this NMP.
- 2.1.3. Figure 1 provides the indicative location of the Facility (red outline) within the context of the surrounding environment.

Figure 1: Indicative Site Location



- 2.1.4. The Facility is located within Llay Industrial Estate which contains numerous industrial and commercial units surrounded predominantly by agricultural land. A former sand and gravel quarry is located approximately 0.13km south of the proposed EP boundary.
- 2.1.5. Llay village is located approximately 0.84km south east of the EP boundary at its nearest point. Residential land use is also located approximately 0.36km north, 0.39km south east and 0.55km south west of the EP boundary.
- 2.1.6. The surrounding land uses, colour coded for each different land use, within 1km of the Facility's Environmental Permit boundary are displayed on the Sensitive Receptor Plan (Drawing PLAT.01.02-03) contained in Appendix I.

2.2. Description of the Proposed Activities

2.2.1. Platts propose to apply for a bespoke waste operation Environmental Permit to undertake one specified waste operation as follows:

- storage of non-hazardous waste wood (classification 03 01 05) with subsequent treatment involving magnetic separation, screening, pulverising and baling to produce animal bedding material (including cubicle conditioner) for use within the agricultural livestock sector

2.2.2. Platts propose to accept 60,000 tonnes of non-hazardous wood waste per annum at the Facility. The proposed waste code to be accepted and processed is detailed in Table 1.

Table 1: Proposed Waste Codes to be Accepted

Code	Description
03	WASTES FROM WOOD PROCESSING AND THE PRODUCTION OF PANELS AND FURNITURE, PULP, PAPER AND CARDBOARD
03 01	Wastes from wood processing and the production of panels and furniture
03 01 05	Sawdust, shavings, cuttings, wood, particle board and veneer other than those mentioned in 03 01 0 4

2.2.3. Clean, uncoated and untreated waste wood is to be used to produce animal bedding products.

2.2.4. Wood waste which has been previously coated will not be used to produce animal bedding. The clean untreated wood waste will not be mixed with this wood waste.

2.2.5. The treated wood waste is to be kept entirely separate from the clean untreated wood waste and will be pulverised to produce a cubicle conditioner (animal bedding). The cubicle conditioner (animal bedding) is applied in limited quantities (1 large cup) on the mat or mattress to control moisture and to keep cattle clean and hygienic.

2.2.6. The waste management operations proposed to be carried out at the Facility specified in Annex I and Annex II of the Waste Framework Directive 2008 are detailed below:

- **R3:** Recycling/reclamation of organic substances which are not used as solvents (including composting and other biological transformation processes); and
- **R13:** Storage pending any of the operations numbered R1 to R12 (excluding temporary storage, pending collection, on the site where it is produced).

3. POTENTIAL SOURCES

3.1. On-Site Sources

- 3.1.1. The potential sources of noise emissions from the Facility activities include:
- heavy goods vehicle (“HGV”) movements transporting waste into the Facility and removing finished product from the Facility;
 - operation of diesel-powered forklift trucks (“FLT”) loading and unloading trailers and moving material around the Facility; and
 - processing activities including operation of hammer mills and extraction systems.

3.2. Other Local Contributors of Noise Emissions

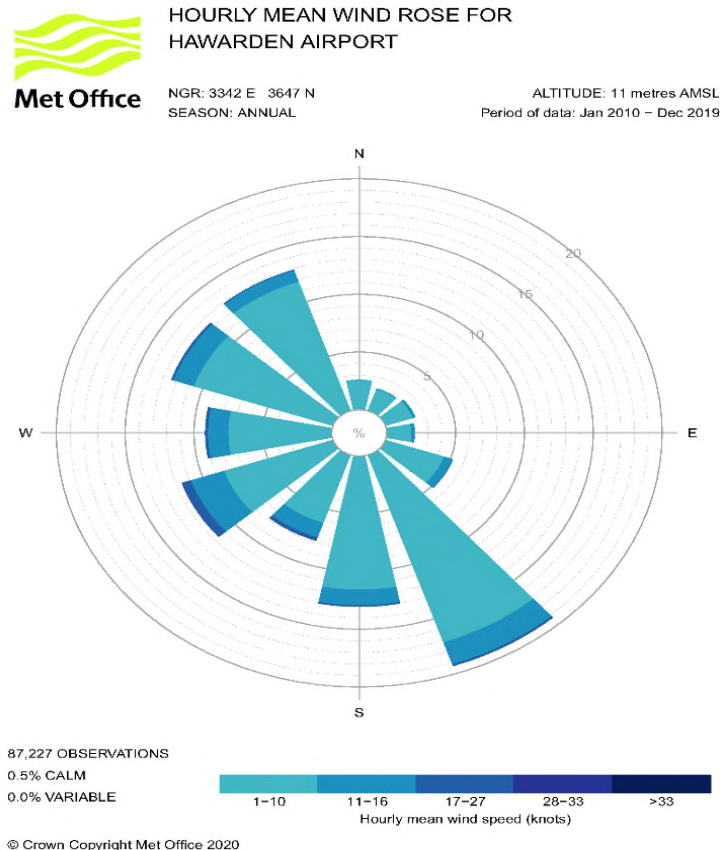
- 3.2.1. The immediate setting around the Facility is industrial and commercial units. The Llay Industrial Estate is comprised of a mixture of commercial and industrial units. The types of industry operating on the estate that may contribute to the ambient sound levels in the area include woodworking, asphalt mixing, building materials supply and aerospace manufacture.
- 3.2.2. The North Wales Auto Grass Track is also located approximately 0.9km south west of the Facility and will be a noise contributor in the vicinity during race days.
- 3.2.3. It should be noted that during the daytime and night-time monitoring periods at each of the NSR locations as part of the NIA, the predominant noise source, whether the Site was operating or not, was HGV traffic on the B5102 Llay Road travelling to and from the direction of the industrial estate.
- 3.2.4. The other local contributors of noise emissions should be taken into account in the event of a complaint being received at the Facility. Community liaison and response to complaints is covered in Section 6.2 of this NMP.

4. POTENTIAL SENSITIVE RECEPTORS

4.1. Consideration for Identifying Sensitive Receptors

- 4.1.1. To determine the severity of emission i.e., noise nuisance which may arise from the Facility, the sensitivity of the receiving environment and potential receptors have been considered.
- 4.1.2. The degree of sensitivity in a particular location is based on the characteristics of the land use, including the reason why people are at the particular location (e.g. for work, recreation or residence).
- 4.1.1. It can also be influenced by the meteorological conditions at the site and surrounding area. The wind rose provided by Hawarden Airport Meteorological Station which is provided in Figure 2 reveals the wind direction is predominately south easterly. Therefore, noise emissions are likely to be blown away from the direction of the human sensitive receptors (see Figure 3).

Figure 2: Annual Wind Rose (2010-2019) – Hawarden Airport



- 4.1.2. Additionally, the degree of sensitivity depends on the distance from the emission source as the closer the receptor is to the source, the higher the potential for nuisance will be at the location. Therefore, the sensitive receptors within 500m of the Facility have been considered in this NMP.
- 4.1.3. A summary of the environmental setting is provided in Table 2.

Table 2: Surrounding Land Uses

Boundary	Description
North	Industrial and commercial units within Llay Industrial Estate, open space/green fields, agricultural land and small areas of residential housing.
East	Industrial and commercial units within Llay Industrial Estate, open fields, agricultural land and small areas of residential housing.
South	Industrial and commercial units within Llay Industrial Estate, former sand and gravel quarry, agricultural land, woodland, Llay Bog SSSI, village of Llay including residential land use, public house and school.
West	Open fields/green space, agricultural land and the village of Cefn-y-bedd including residential land use and school.

- 4.1.4. Potential sensitive human receptors within 500m radius are identified in Figure 3 and Table 3.

Figure 3: Identified Human Receptors within 500m of the Facility Permit Boundary



Table 3: Human Receptors within 500m of the Facility

Ref	Description	Centre Point		Nearest Point	
		Easting	Northing	Distance from Permit Boundary (km)	Direction
H1	Llay Industrial Estate - North	332313	356581	0	N
H2	Llay Industrial Estate - South	332103	356240	0	S
H3	Llay Industrial Estate - East	332491	356424	0	E
H4	Commercial and Residential – Farm Off Llay Road	331527	356155	0.38	SW
H5	Residential – Llay Road (The Meadows Barns)	332486	356042	0.38	SE
H6	Llay Industrial Estate – South East	332908	356174	0.43	SE

- 4.1.5. With regards to potential ecological receptors, the Ecological Appraisal (Preliminary Desktop Ecological Appraisal) carried out as part of this application, found that there are no statutory designated sites for nature conservation within 500m.
- 4.1.6. There were also noted to be no local wildlife sites or areas of ancient woodland within 500m. There are records of Great Crested Newts and other amphibians between 250m and 500m from the site boundary however the report concludes that activities undertaken at the site is unlikely to result in any adverse impact on the Great Crested Newts of any other protected species. The full ecological report is contained within Section 12 of this application submission.
- 4.1.7. It is noted that adjacent to the proposed Facility boundary lies a Great Crested Newt habitat area developed by Platts as part of a planning application dating back to 2001. The potential impact of the proposed activities on the local Great Crested Newts population is considered in this NMP and in the Environmental Risk Assessment (Document Reference PLAT.01.02/ERA) contained within Section 5 of this application submission.
- 4.1.8. The potential sensitive receptors within a 1km radius of the Environmental Permit (“EP”) boundary including the Great Crested Newt Habitat area are shown on the Sensitive Receptors Plan (Drawing Reference PLAT.01.02-03) contained in Appendix I of this NMP.

5. OPERATIONAL AND PROCESS CONTROLS

5.1. General Control Measures

- 5.1.1. Personnel will be suitably trained in the conditions of the Environmental Permit and Environmental Management System (“EMS”) which includes relevant management plans. The Facility will be managed in accordance with the EMS which is reviewed regularly to ensure it remains appropriate and up to date.

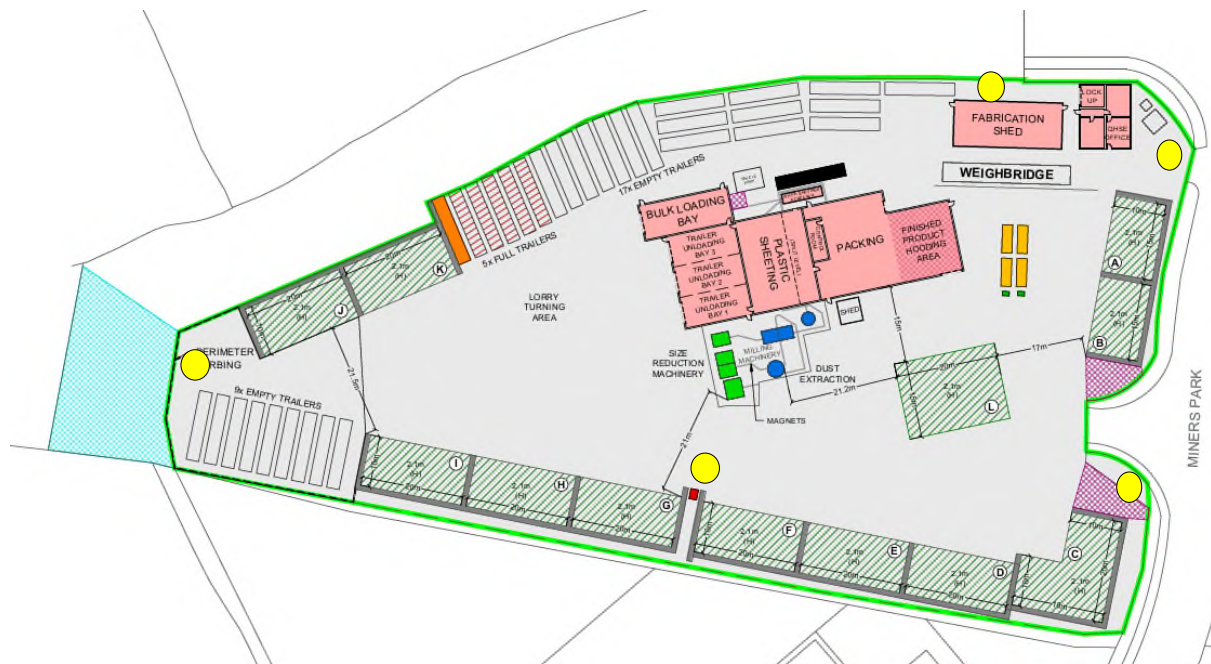
5.2. Planned Preventative Maintenance Regime

- 5.2.1. All machinery will be maintained in good working order as per the Planned Preventative Maintenance Regime (“PPMR”). Any malfunction or breakdown leading to abnormal noise emissions will be dealt with promptly and operations modified or suspended until normal working practices can be restored.
- 5.2.2. Under the PPMR, machinery is subject to pre-use and daily checks as well as regular scheduled inspections at appropriate time intervals.

5.3. Noise Monitoring

- 5.3.1.1. Operators have been trained in the prompt identification and reporting of abnormal noise generated on site. A twice daily (per shift – 2 per day) housekeeping site walk is undertaken by the Shift Supervisor/Team Leader and any abnormal noise or vibration issue internally or externally is recorded and actions raised. An example of a completed twice daily housekeeping checksheet is provided in Appendix II. Ad hoc site safety walks and environmental audits are also completed as part of the EMS and any actions are recorded.
- 5.3.2. Additionally, as recommended by the NIA, periodic boundary noise monitoring will be performed every 6 months to determine any changes in the intensity of the sound over time. The monitoring does not require a fully compliant sound level meter (“SLM”) and associated equipment as monitoring is only to provide an indication of change in the potential impact of the on-site noise generating activities. Should the periodic monitoring suggest on-site noise levels are increasing, fully compliant monitoring of the noise generating activities on the Site will be undertaken and impact at the NSR locations repeated to determine the potential degree of impact on the NSRs.
- 5.3.3. The indicative boundary monitoring location points are shown as yellow circles in Figure 5 below.

Figure 5: Indicative Bi-annual Noise Monitoring Locations



5.3.4. The findings of the bi-annual boundary monitoring and any associated mitigation measures implemented will be recorded as part of the EMS.

5.4. Process Stages, Potential Emission Sources and Associated Risk Level

5.4.1. Table 4 details the environmental risk assessment undertaken for noise arising at the Facility. It can be observed that the control measures reduce the overall risk to insignificant.

Table 4: NMP Risk Assessment and Control Measures

Potential Source	Receptor	Pathway	Control and Mitigation Measure	Probability of Exposure	Consequence	Overall Risk
HGV movements transporting waste into the Facility and removing finished product from the Facility.	Human and ecological receptors in the local area	Releases to air	All vehicles are serviced and Ministry of Transport ("MOT") road worthy. All vehicles will be limited to 5mph on site and must adhere to the internal designated routing system which has been designed to reduce movements on site and hence reduce the intermittent beeping generated from reversing manoeuvres as required for the health and safety of all workers.	Low/Moderate Control measures will minimise noise emissions from reaching identified receptors.	Possible noise nuisance Ecological disturbance - communication, use of space or reproduction	Insignificant
Operation of diesel-powered forklift trucks loading and unloading trailers and moving material around the Facility	Human and ecological receptors in the local area	Releases to air	All vehicles will be limited to 5mph on site and must adhere to the internal designated routing system which has been designed to reduce movements on site and hence reduce the intermittent beeping generated from reversing manoeuvres as required for the health and safety of all workers. All movements are undertaken by trained and competent Platts personnel. Refresher training is included as part of the company's training programme. FLT daily checks are undertaken to ensure that they are in a good working condition and any faults are identified and addressed prior to operation around site. All site vehicles are also subject to annual servicing and maintenance checks.	Low Control measures will minimise noise emissions from reaching identified receptors.	Possible noise nuisance Ecological disturbance - communication, use of space or reproduction	Insignificant

Table 4: NMP Risk Assessment and Control Measures (Cont.)

Potential Source	Receptor	Pathway	Control and Mitigation Measure	Probability of Exposure	Consequence	Overall Risk
Processing activities including operation of magnets, hammer mills, white shavings screener, baling and extraction systems	Human and ecological receptors in the local area	Releases to air	All operations are located within designated areas of the Facility. The processing activities are located away from the Permit boundary to reduce the likelihood of noise nuisance being experienced by sensitive receptors such as those in residential areas as impact reduces with distance.	Low/Moderate	Possible noise nuisance	Insignificant
			The majority of processing activities are undertaken internally to provide sufficient noise attenuation.		Ecological disturbance - communication, use of space or reproduction	
			All site plant and equipment are covered by the planned preventative maintenance regime ("PPMR") contained within the EMS to ensure adequate maintenance of any parts of plant or equipment whose deterioration may give rise to increases in noise.			
			All personnel will be trained in noise management and the prompt reporting of any abnormal noise so that it can be rectified immediately.			

5.5. Emergency Scenario Contingency Measures

- 5.5.1. In the event of an accident/unexpected incident such as fire, breakdown, extreme weather conditions and staff absences, the following emergency measures will be implemented on site to manage the risk of noise emissions. In exceptional circumstances, Senior Management will discuss whether to cease part or all of the site operations. The emergency contingency measures are detailed in Table 5.

Table 5: Emergency Scenario Contingency Measures

Emergency Scenario	Contingency Measures
Extreme weather conditions – high wind, humidity and temperature	During extreme weather conditions of high wind, humidity and temperature when noise complaints are more likely due to residents opening windows and doors, Platts will review scheduling of activities to investigate the possibility of undertaking those activities which do not involve noise generation during the night-time hours. However, it should be noted that during the heatwave conditions experienced in 2020, no noise complaints were received at the Facility.
Fire/Explosion	<p>The Fire and Rescue Service (“FRS”) and the NRW will be informed. Platts personnel will be instructed to implement the emergency procedures such as those detailed in the Fire Prevention Plan (PLAT.01.02/FPP) which is submitted as part of this application and also forms part of the EMS.</p> <p>Waste will not be accepted at the site until operations re-commence.</p> <p>Once the site or affected area is deemed safe by the FRS, repairs will be undertaken and/or replacement equipment will be sourced. Start-up of equipment will be undertaken gradually by trained personnel to ensure optimal performance of equipment prior to full commencement of waste activities.</p>
Staff Absences	<p>Platts has assigned responsible persons and deputies in the case of staff absence.</p> <p>At the start of each working day, the Site Manager will instruct the deputy in the case of staff absence to ensure all measures outlined in this NMP are undertaken. All employees will be fully trained in the NMP and nominated personnel are available to attend site out of normal working hours.</p>
Breakdown or malfunction of the process line and/or extraction system	<p>Staff will be alerted of any problems with the site equipment and extraction systems via the sounding of an automatic alarm from the system control panel.</p> <p>Should either the process line or the extraction system fail or malfunction causing excess noise emissions, no further waste shall be input to the process line and the emergency stop button, located on the side wall adjacent to bailer 2, will be pressed, halting all operations.</p> <p>Commencement of operations will only be permitted once the fault or malfunction has been rectified by qualified personnel.</p>

6. COMMUNITY LIAISON AND RESPONSE TO COMPLAINTS

6.1. Community Liaison

- 6.1.1. Platts maintains an open and transparent relationship with the local community.
- 6.1.2. Contact details are provided on the company website² including a telephone number, email address and live chat for general enquiries. Platts welcome correspondence using these provided methods of communication. If necessary, a Platts representative can also attend local community meetings.
- 6.1.3. Platts has confirmed that at the time of writing the NMP, there have been no noise complaints received **directly at the site** relating to the activities undertaken at the Facility.

6.2. Response to Complaints

6.2.1. Initial Response – Data Gathering

- 6.2.1.1. If a noise complaint is received either from a member of the public or NRW, the complaint will be fully investigated within 8 working hours. **The Group QHSE will be responsible for leading the investigation.**
- 6.2.1.2. Platts will request as much information as possible from the complainant, such as:
- date and time the problem was first identified;
 - location of complainant;
 - description of the noise to help identify the likely source of the noise; and
 - frequency and/or intensity of problem.
- 6.2.1.3. This information will help inform and structure the investigation to be undertaken.

6.2.2. Noise Complaint Investigation

- 6.2.2.1. The investigation will include the following:
- undertaking a site inspection to establish whether any abnormal noise emissions can be identified **and reviewing the completed noise monitoring findings at the time of the abnormal noise being experienced;**
 - viewing Closed Circuit Television (“CCTV”) footage to determine if unloading, processing or vehicle movements were occurring at the time to try and establish the potential origin;
 - speaking with operators and any contractors on site at the time of the event who may be able to provide further information regarding the occurrence or have observed the abnormal noise emissions;
 - **reviewing the noise monitoring records (Appendix II) to confirm inspections have been completed and to note whether any abnormal activities or observations were recorded; and**

² Company Website, available at: <https://www.plattsanimalbedding.co.uk/>, accessed November 2021.

- discussions with operators to establish any changes to normal operating condition, for example, any malfunction of equipment or abstraction systems.

6.2.3. Noise Complaint – Corrective and Preventative Measures

6.2.3.1. Once the investigation has been completed and the complaint substantiated, Platts will determine and implement suitable corrective and preventative measures. The type and level of corrective and preventative measures will be dependent on the root cause and scale of the noise. Examples of the corrective and preventative measures may include:

- immediately ceasing of operations in areas of site where the abnormal noise emissions have been identified until preventative measures can be implemented; successfully;
- review and inspect all processing equipment and extraction systems to ensure they are operating appropriately;
- undertake any maintenance required on equipment;
- investigate the need for any noise abatement; and
- further staff training on noise monitoring and control measures to be undertaken.

6.2.3.2. NRW will be informed of the nuisance complaint investigation findings and proposed corrective and preventative measures which have been implemented to rectify the situation.

6.2.4. Noise Complaint – Evaluation of Corrective and Preventative Measures

6.2.5. Twice daily housekeeping checks will be in place to ascertain whether the corrective and preventative measures above are successful in controlling and reducing noise emissions which will see a reduction in complaints. These inspections and associated findings are recorded on the form provided in Appendix II.

6.2.6. Timescales

6.2.6.1. The timescales associated with the complaint procedures are as follows:

- investigate complaint – within 8 working hours; and
- corrective measures – immediately or where specialist contractors are required within 1-2 working days; and
- preventative measures– within 5 working days.

6.2.7. Feedback to Complaints

6.2.7.1. Platts will discuss complaint investigation findings and the associated corrective and preventative actions which have been implemented directly with the complainant.

6.2.7.2. A visit to site will be offered to the complainant in order to walk through the process and to discuss the measures taken to reduce noise on site.

6.2.8. **Records**

6.2.8.1. NMP records are kept in accordance with the procedures established in their EMS.

6.2.8.2. The type of information that will be recorded relates to:

- detailed description of the complaint received;
- the investigation findings including root cause;
- all corrective and preventative measures implemented; and
- evaluation of measures and complaint close out by Senior Management.

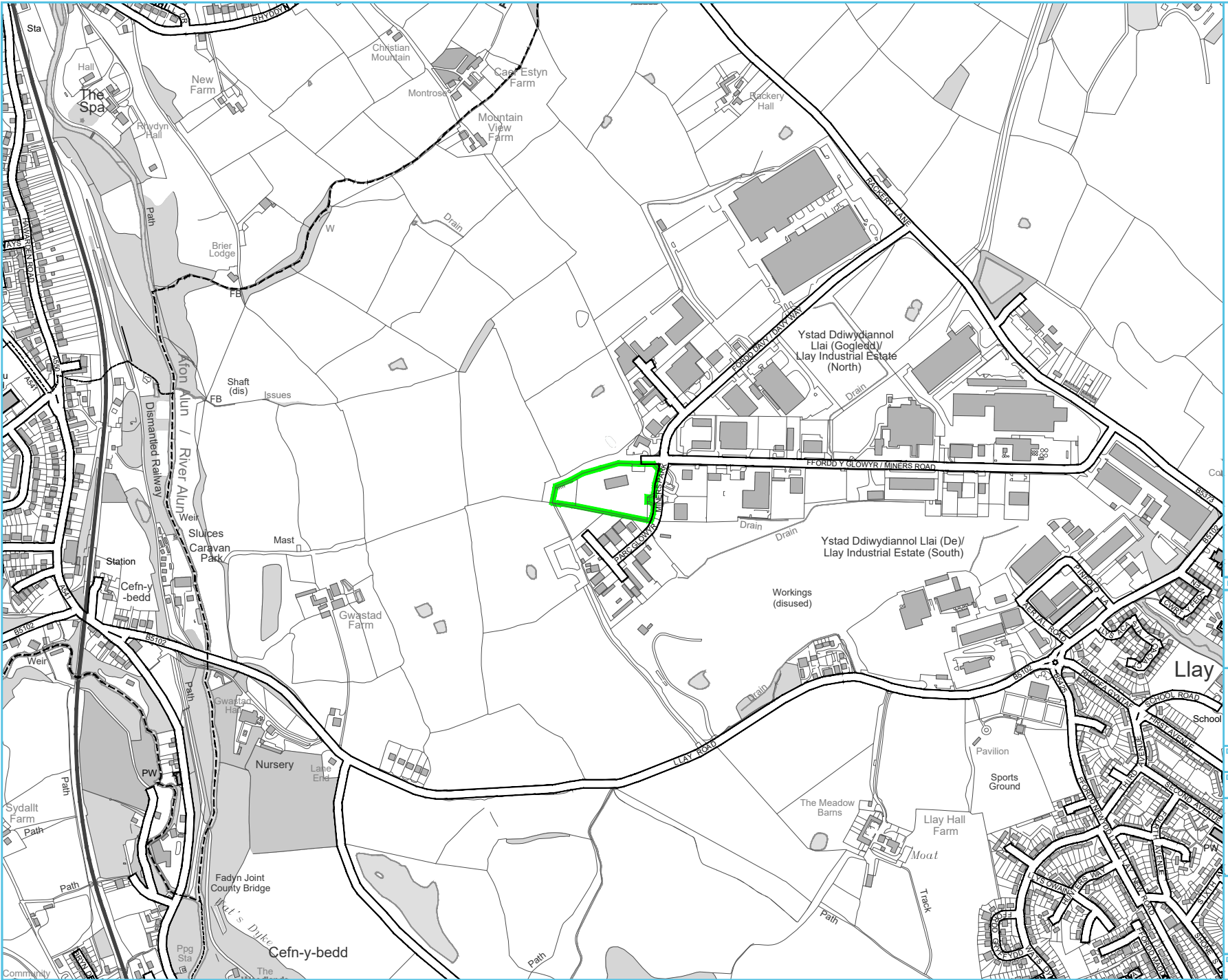
7. NMP REVIEW

- 7.1.1. The NMP will form part of the EMS and the continuing effectiveness of the NMP will be reviewed by Senior Management annually or in the event of the following:
- any surrounding land use changes and any future developments that may increase or alter the impact;
 - any changes to site activities which have the potential to result in noise nuisance; and/or
 - if a substantiated complaint is received and it is clear control measures have failed.
- 7.2. The reviews will take into account monitoring records, compliance records, complaints history, site records and any recent sensitive developments on neighbouring land. The plan will be amended as necessary, including any changes to the control measures.

APPENDIX I DRAWINGS

LEGEND

 ENVIRONMENTAL PERMIT BOUNDARY



Rev Date Details Chkd

Environmental Compliance Ltd.
Unit G1
The Willowford
Main Avenue
Treforest Industrial Estate
Pontypridd,
CF37 5YL

ecl
Tel: 01443 841760
Fax: 01443 841761
Email: info@ec.world
Web: www.ec.world

Client



Date 17/03/2023 Scale 1:10K @ A4 Drawn by GTB Checked by HR Approved by SM

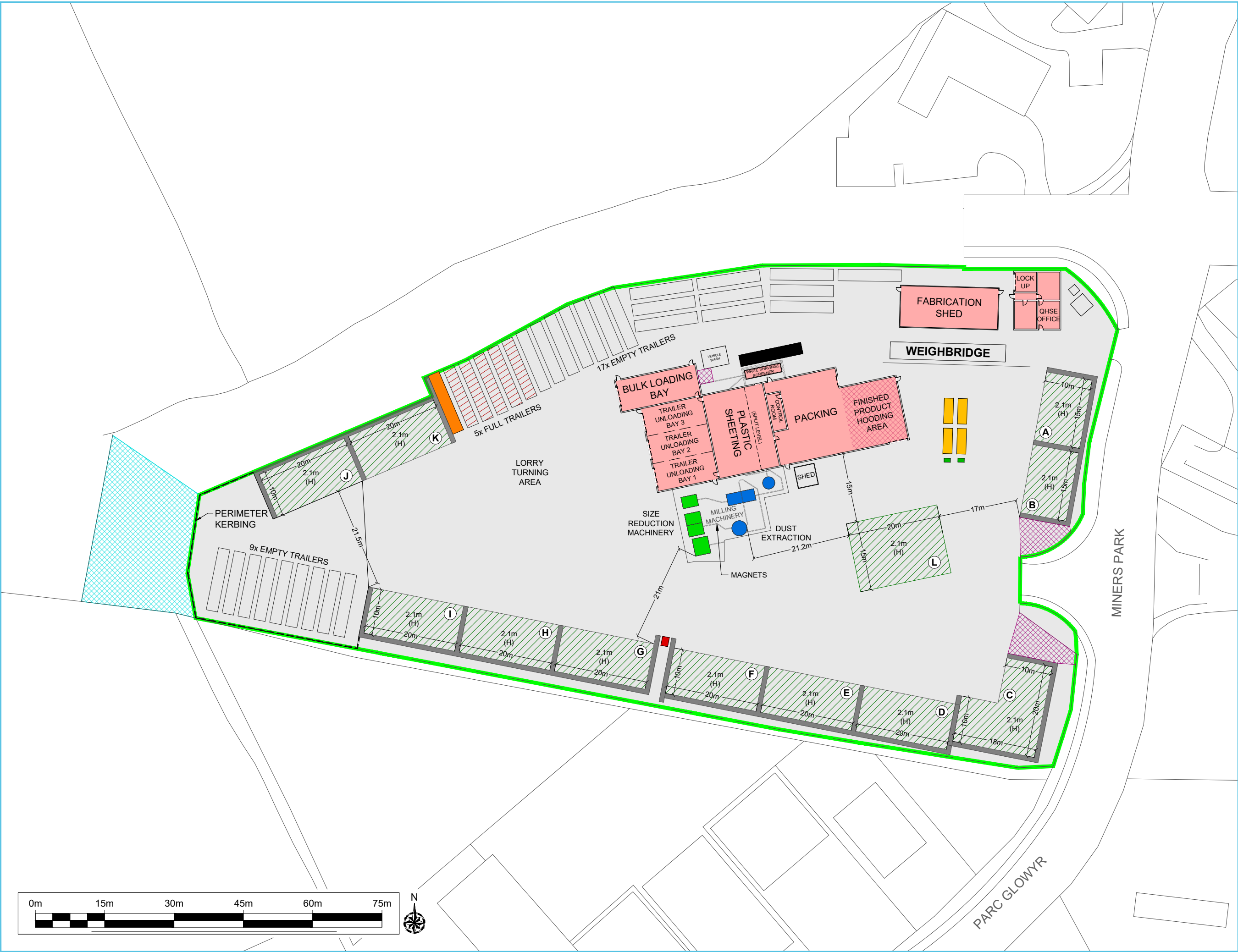
Drawing Status

FINAL

Project Title
ENVIRONMENTAL PERMIT APPLICATION
PLATTS AGRICULTURE LIMITED
MINERS PARK, LLAY INDUSTRIAL ESTATE
LLAY
WREXHAM

Drawing Title
SITE LOCATION PLAN

Drawing Number PLAT.01.02-01 Rev -



- LEGEND**
- ENVIRONMENTAL PERMIT BOUNDARY
 - CONCRETE
 - BUILDINGS
 - TRAILERS CONTAINING UNPROCESSED MATERIAL
 - PROCESSED MATERIAL (BALES)
 - BUNDED RED DIESEL TANK
 - NON-CONFORMING WASTE QUARANTINE AREA
 - EXTRACTION TRAILER - 13.7m(L) X 2.5m(W)
 - MOBILE PLANT STORAGE AREA
 - GREAT CRESTED NEWT HABITAT AREA
 - 5.5x2x2.5m SKIP
 - 660L BINS

BAYS A-B
15m X 10m X 2.1m BAY = 120 PALLETS
120 PALLETS X 2 = 240 PALLETS

BAY C
10m X 20m X 2.1m + 8m X 10m X 2.1m = 160 + 60 = 220 PALLETS

BAYS D-K
20m X 10m X 2.1m BAY = 160 PALLETS
160 PALLETS X 8 = 1280 PALLETS

STORAGE AREA L
15m X 20m X 2.1m = 240 PALLETS

TOTAL = 1980 PALLETS

Rev	Date	Details	Chkd

Environmental Compliance Ltd.
Unit G1
The Willowford
Main Avenue
Treforest Industrial Estate
Pontypridd,
CF37 5YL

ecl
Tel: 01443 841760
Fax: 01443 841761
Email: info@ed.world
Web: www.ed.world



Date	Scale	Drawn by	Checked by	Approved by
09/05/2023	1:750 @ A3	GTB	HR	SM

Drawing Status

FINAL

Project Title
ENVIRONMENTAL PERMIT APPLICATION
PLATTS AGRICULTURE LIMITED
MINERS PARK, LLAY INDUSTRIAL ESTATE
LLAY
WREXHAM

Drawing Title
SITE LAYOUT PLAN



Ordnance Survey © Crown Copyright 2020. All rights reserved. Licence number 100022432

N

LEGEND

- ENVIRONMENTAL PERMIT BOUNDARY
- 1000m OFFSET BOUNDARY
- DOMESTIC DWELLINGS
- COMMERCIAL / INDUSTRIAL PREMISES
- GRASS / SHRUB
- TREES / WOODS
- ROAD FEATURES
- SURFACE WATER FEATURES
- LLAY BOG
SITE OF SPECIAL SCIENTIFIC INTEREST
- BLAST POND LOCAL WILDLIFE SITE
- RHYDYN HALL GRASSLAND
LOCAL WILDLIFE SITE
- GREAT CRESTED NEWTS DESIGNATED
HABITAT AREA

HOURLY MEAN WIND ROSE FOR
HAWARDEN AIRPORT

Met Office

NSR: 3342 E 3647 N
SEASON: ANNUAL

ALTITUDE: 11 metres AMSL
Period of data: Jan 2010 - Dec 2019

87,227 OBSERVATIONS
0.9% CALM
0.0% VARIABLE

1-10 11-16 17-27 28-33 >33
Hourly mean wind speed (knots)

© Crown Copyright Met Office 2020

Rev	Date	Details	Chkd

Environmental Compliance Ltd.

Unit G1
The Willowford
Main Avenue
Treforest Industrial Estate
Pontypridd,
CF37 5YL

ecl

Tel: 01443 841760
Fax: 01443 841761
Email: info@ed.world
Web: www.ed.world

Client

PLATTS

EST 1973
AGRICULTURE

Date	Scale	Drawn by	Checked by	Approved by
17/03/2023	1:7.5K @ A3	GTB	HR	SM

Drawing Status

FINAL

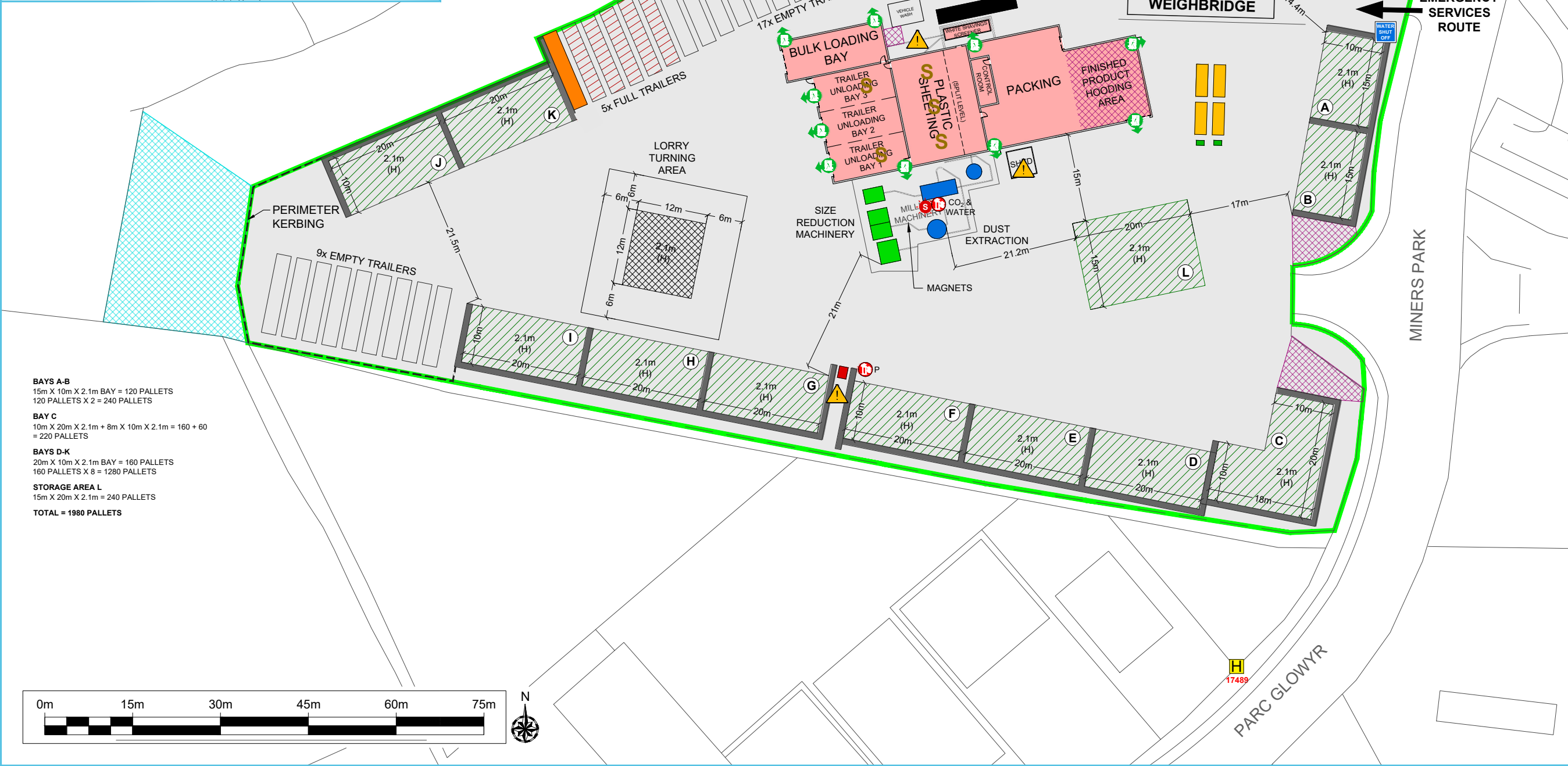
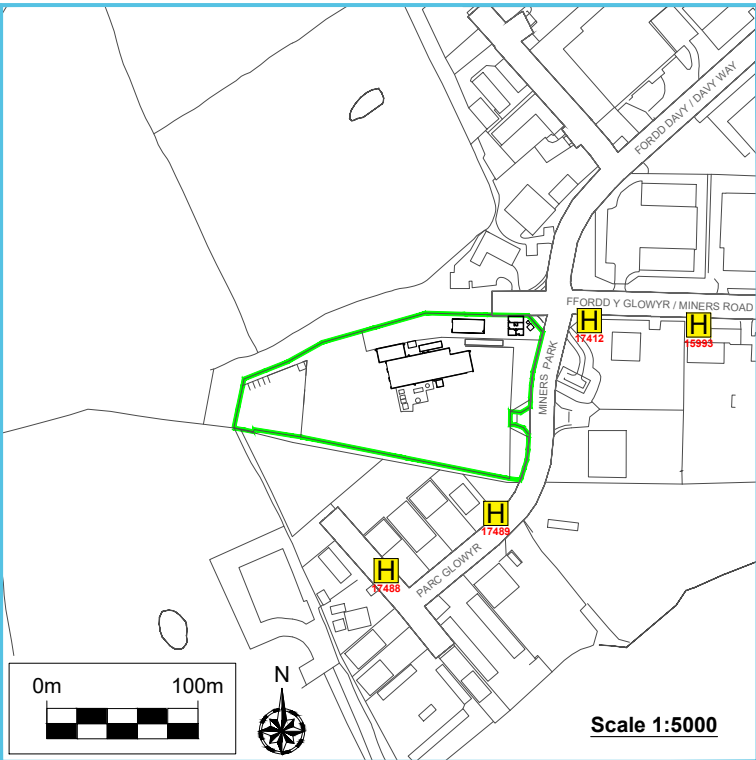
Project Title

ENVIRONMENTAL PERMIT APPLICATION
PLATTS AGRICULTURE LIMITED
MINERS PARK, LLAY INDUSTRIAL ESTATE
LLAY
WREXHAM

Drawing Title

SENSITIVE RECEPTOR PLAN

Drawing Number	Rev
PLAT.01.02-03	-



- LEGEND**
- ENVIRONMENTAL PERMIT BOUNDARY
 - CONCRETE
 - BUILDINGS
 - TRAILERS CONTAINING UNPROCESSED MATERIAL
 - PROCESSED MATERIAL (BALES)
 - BUNDED RED DIESEL TANK
 - NON-CONFORMING WASTE QUARANTINE AREA
 - EXTRACTION TRAILER - 13.7m(L) X 2.5m(W)
 - MOBILE PLANT STORAGE AREA
 - GREAT CRESTED NEWT HABITAT AREA
 - 5.5x2x2.5m SKIP
 - 660L BINS
 - FPP QUARANTINE AREA
 - IGNITION SOURCE - GAS BOTTLES
 - COSHH STORAGE
 - HIGH LEVELS OF SAWDUST
 - LOCATION OF FIRE PREVENTION PLAN
 - ELECTRICAL SHUT OFF POINT
 - WATER SHUT OFF POINT
 - FIREWATER CONTAINMENT EQUIPMENT
 - FIRE SUPPRESSION SYSTEM
 - FIRE EXTINGUISHER
 - FIRE EXIT
 - EMERGENCY ASSEMBLY POINT
 - FIRE HYDRANT

NOTE
FOR DETAILED MAIN FACTORY FIRE PREVENTION AND MITIGATION INFO SEE DRAWINGS PLAT.01.02-05a & PLAT.01.02-05b

Rev	Date	Details	Chkd
01	09/05/2023	1:750 @ A3	GTB

Environmental Compliance Ltd. **ecl**
Unit G1
The Willowford
Main Avenue
Treforest Industrial Estate
Pontypridd,
CF37 5YL
Tel: 01443 841760
Fax: 01443 841761
Email: info@ed.world
Web: www.ed.world



Date	Scale	Drawn by	Checked by	Approved by
09/05/2023	1:750 @ A3	GTB	HR	SM

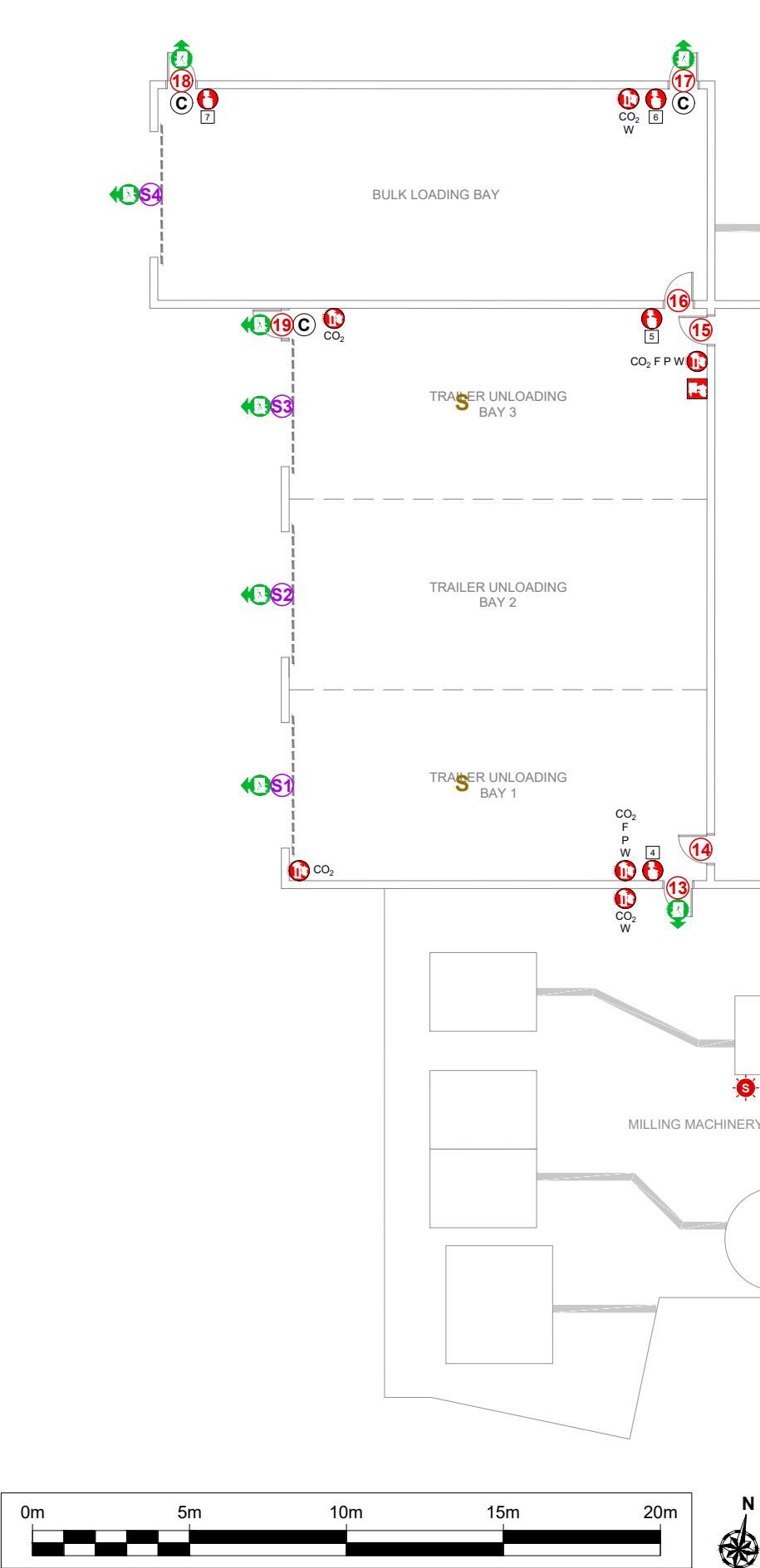
Drawing Status

FINAL

Project Title
ENVIRONMENTAL PERMIT APPLICATION
PLATTS AGRICULTURE LIMITED
MINERS PARK, LLAY INDUSTRIAL ESTATE
LLAY
WREXHAM

Drawing Title
FIRE PREVENTION AND MITIGATION PLAN

Drawing Number	Rev
PLAT.01.02-04	1



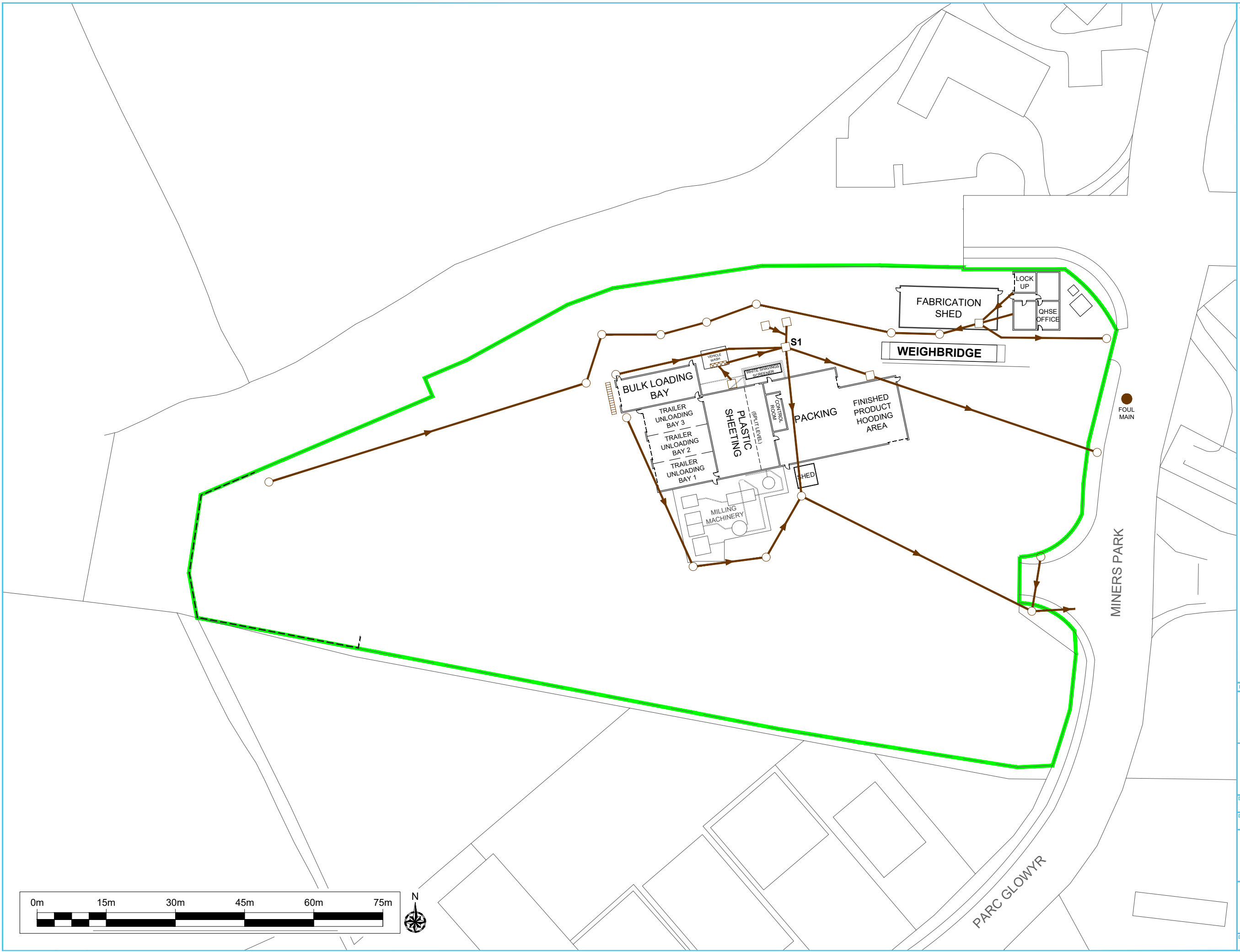
DOOR SCHEDULE	
NO.	LOCATION
8	WASHBAY
9	CONTROL ROOM
10	MACHINE ROOM
11	CHIPPER
12	HOODER
13	BACK SHED / CHIPPER
14	MACHINE ROOM
15	MACHINE ROOM
16	BULK / BACK SHED
17	BULK SHED
18	BULK SHED
19	BACK SHED BAY 3
S1	BAY 1
S2	BAY 2
S3	BAY 3
S4	BULK SHED
S5	HOODER
S6	BALER 3
S7	LOCK-UP

- LEGEND**
- COSHH STORAGE
 - HIGH LEVELS OF SAWDUST
 - FIREWATER CONTAINMENT EQUIPMENT
 - FIRE SUPPRESSION SYSTEM
 - FIRE ALARM BREAK GLASS
 - FIRE EXTINGUISHER
WATER = W
POWDER = P
CARBON DIOXIDE = CO₂
FOAM = F
 - FIRE HOSE
 - FIRE BLANKET
 - FIRST AID KIT
 - AIR RECEIVER
 - FIRE EXIT
 - SELF CLOSING DOOR
 - FIRE DOOR
 - TELEPHONE POINT
 - PACKING & HOODER DOORS
 - BACK & BULK SHED DOORS
 - SHUTTER DOORS

NOTE
FOR EXTERNAL FIRE PREVENTION & MITIGATION INFO
SEE DRAWING PLAT.01.02-04

Rev	Date	Details	Chkd
Environmental Compliance Ltd. Unit G1 The Willowford Main Avenue Treforest Industrial Estate Pontypridd, CF37 5YL			
Client 			
Date 10/05/2023	Scale 1:200 @ A3	Drawn by GTB	Checked by SM Approved by SM
Drawing Status FINAL			
Project Title ENVIRONMENTAL PERMIT APPLICATION PLATTS AGRICULTURE LIMITED MINERS PARK, LLAY INDUSTRIAL ESTATE LLAY WREXHAM			
Drawing Title FIRE PREVENTION AND MITIGATION PLAN MAIN BUILDING			
Drawing Number PLAT.01.02-05a			Rev -

- LEGEND**
- ENVIRONMENTAL PERMIT BOUNDARY
 - FOUL DRAINAGE
 - MANHOLE
 - INSPECTION COVER
 - INTERCEPTOR PIT
 - ACO / ECO DRAIN
 - S1** EMISSION POINT TO SEWER



Rev	Date	Details	Chkd
-----	------	---------	------

Environmental Compliance Ltd.
Unit G1
The Willowford
Main Avenue
Treforest Industrial Estate
Pontypridd,
CF37 5YL

ecl.
Tel: 01443 841760
Fax: 01443 841761
Email: info@ed.world
Web: www.ed.world



Date	Scale	Drawn by	Checked by	Approved by
09/05/2023	1:750 @ A3	GTB	HR	SM

Drawing Status

FINAL

Project Title

ENVIRONMENTAL PERMIT APPLICATION
PLATTS AGRICULTURE LIMITED
MINERS PARK, LLAY INDUSTRIAL ESTATE
LLAY
WREXHAM

Drawing Title

DRAINAGE PLAN

Drawing Number	Rev
PLAT.01.02-06	-

APPENDIX II

MONITORING RECORDING FORM



Team Leader - Daily Site Walk - Days

Complete

Score	100%	Flagged items	0	Actions	0
Conducted on		05.04.2023 13:30 BST			
Prepared by				Chris	

Daily Checks

100%

AGR F001 Daily Factory / Site Monitoring

100%

Is the main gate in good working order & padlock in place?	Yes
Is the perimeter fence secure?	Yes
Are platform bars securely in brackets on empty bays?	Yes
Do we have over 360 Pallets in stock?	Yes
Is the diesel bund secure and accessible?	Yes
Are vehicle and pedestrian routes clear?	Yes
Are all factory fire exits unlocked and clear of obstruction?	Yes
Is back gate in good working order and padlock in place?	Yes
Is LEV system functioning correctly?	Yes
Is Grecon spark detection system functioning correctly?	Yes
Are all machines clean & tidy?	Yes
Is the housekeeping equipment in place on shadow boards?	Yes
Are there any issues with fugitive dust emissions?	No
Did you notice any abnormal noise or vibration issues? Internal or externally?	No
Are all walkways clear and free from obstructions?	Yes
Is the site clear of debris, litter and potential trip hazards?	Yes

AGR F005 - Hammermills / Chippers

100%

Is there any damage to chippers?	No
Is there any leaks or evidence of sawdust being ejected from the chipper?	No
Are the interlock retaining bolts in good condition?	Yes
Are the screens and runners in good condition?	Yes
Is hammer wear within acceptable limits?	Yes

Is changeover handle easy to operates and free from damage?	Yes
---	-----

Baler 2 - AGR F018

100%

Is there any damage to conveyors?	No
Are there any air leaks on the machine?	No
Are emergency stops functioning correctly?	Yes
Are light beam safety bars functioning correctly?	Yes
Are isolation switches working?	Yes
Are there any leaks or excess product around the machine?	No
Are access ladders safe and free from defects?	Yes
Is the hydraulic oil level correct?	Yes
Are there any hydraulic oil leaks?	No
Are the hydraulic pipes and connections in good condition?	Yes
Is there excess moisture in the water separator?	No
Are the air pipes and connections in good condition?	Yes
Is there any sign of excessive heating or noise from bearings or motors?	No

Baler 1 AGR F017

100%

Is there any damage to conveyors?	No
Are emergency stops functioning correctly?	Yes
Are light beam safety bars functioning correctly?	Yes
Are isolation switches working?	Yes
Are there any leaks or excess product around the machine?	No
Are access ladders safe and free from defects?	Yes
Is the hydraulic oil level correct?	Yes
Are there any hydraulic oil leaks?	No

Are the hydraulic pipes and connections in good condition?	Yes
Is there excess moisture in the water separator?	No
Are there any air leaks on the machine?	No
Are the air pipes and connections in good condition?	Yes
Is there any sign of excessive heating or noise from bearings or motors?	No

Baler 3 - AGR F019

100%

Is there any damage to conveyors?	No
Are emergency stops functioning correctly?	Yes
Are light beam safety bars functioning correctly?	Yes
Are isolation switches working?	Yes
Are there any leaks or excess product around the machine?	No
Are access ladders safe and free from defects?	Yes
Is the hydraulic oil level correct?	Yes
Are there any hydraulic oil leaks?	No
Are the hydraulic pipes and connections in good condition?	Yes
Is there excess moisture in the water separator?	No
Are there any air leaks on the machine?	No
Are the air pipes and connections in good condition?	Yes
Is there any sign of excessive heating or noise from bearings or motors?	No

AGR F013 Robot 1&2

100%

Are all guards in place and in good working order?	Yes
Are emergency stops and isolation switches working?	Yes
Are robots clean and free from excess product?	Yes
Are the air filters clean?	Yes

AGR F004 Willems Hooder

100%

Are all guards in place and in good working order?	Yes
Are emergency stops and isolation switches working correctly?	Yes
Is the area clear from obstruction, leaks and spillages?	Yes
Are ladders in good condition?	Yes
Are all fall protection bars in place on ladders and at the top of the machine?	Yes

AGR F020 Shunter

100%

Are fuel levels sufficient?	Yes
Are oil and water levels ok?	Yes
Are the tyres in good condition and correctly inflated?	Yes
Are there any issues with the brakes or steering?	No

AGRF003 Bobcat Telehandler

100%

Are fork arms, carriage plate and attachments in good condition?	Yes
Is backrest extension in good condition?	Yes
Are boom and wear pads in good condition?	Yes
Are there any issues with steering, drive or brakes?	No
Are all wheels and tyres in good condition?	Yes
Are lights and audible warning functioning correctly?	Yes
Are the hydraulic controls functioning correctly?	Yes
Are battery , fuel and oil levels ok?	Yes
Is the engine compartment clear from excess product?	Yes
Is the overall cleanliness and condition of the machine satisfactory?	Yes

AGR F022 Trailer Jacks - Jack 1 / Jack 2 / Jack 3

100%

Is there a chain fitted to all 3 jack?	Yes
Is there any damage to welds on any of the jacks?	No
Are the handles working?	Yes
Is the main body of the jacks moving freely?	Yes
is there any damage to the wheels or body?	No

AGR F010 GEHL Truck

100%

Is the bucket and carriage in good condition?	Yes
Are the wheels, wheel nuts and tyres in good condition?	Yes
Are oil, water and hydraulic oil levels ok?	Yes
Are all windows free from damage?	Yes
Is there any oil leaks from the machine?	No
Are steering and drive controls functioning correctly?	Yes
Does the audible reverse warning function correctly?	Yes
Are the lights working ok?	Yes
Do the hydraulic controls function correctly?	Yes
Grease nipples / plate ok?	Yes
Has the engine compartment been cleared of any excess product?	Yes

AGR F012 Nifty Lift Height Rider

100%

Are all safety stickers in place?	Yes
Are the guard and anchor points in good working order?	Yes
Do the isolation switches and emergency stops function correctly?	Yes
Are there any leaks from the machinery?	No

Is the harness in good working order?	Yes
Are the wheels and tyres in good condition?	Yes
Are the controls in good working order?	Yes
Is there adequate lubricant in the machine?	Yes
Is there any damage to the machine?	No

AGR F025 Scissor Lift

100%

Are the wheels and tyres in good condition?	Yes
Is the battery compartment free from dust?	Yes
Is the charging plug in good condition?	Yes
Are the spreader plates and footplate in good condition?	Yes
Are the interlocks functioning and engaged?	Yes
Is the chassis, boom and mast in good condition?	Yes
Is the platform, cage access clear of debris and obstruction?	Yes
Are the harness anchor points in good condition?	Yes
Are ground and platform controls functioning correctly?	Yes
Are all safety warning, signage and ID plate present and legible?	Yes
Do the emergency stops and emergency lowering system function correctly?	Yes
Do all switches and function controls move freely?	Yes
Are are lifting and travel functions working correctly?	Yes
Is the elevated drive speed reduced or prevented?	Yes
Are the limit switches functioning correctly?	Yes
Are the accessories - Power to platform / extending decks functioning correctly?	Yes

Other Issues

100%

Were there any Health and Safety concerns observed?

No

Were there any other issues issues picked up during the site walk?

No