

# Non-Technical Summary for Colomendy Waste Transfer Station



This document provides a non-technical summary of waste environmental permitting at the Colomendy Waste Transfer Station.

---

WRAP's vision is a world in which resources are used sustainably.

Our mission is to accelerate the move to a sustainable resource-efficient economy through re-inventing how we design, produce and sell products; re-thinking how we use and consume products; and re-defining what is possible through re-use and recycling.

Find out more at [www.wrapcymru.org.uk](http://www.wrapcymru.org.uk)

**Document reference:** WRAP, 2023, Denbighshire County Council, Non-Technical Summary for Colomendy Waste Transfer Station, Prepared by Sophie Crossette, Laura Williams, Luke Williams and Rebecca Southall

**Written by:** Eunomia Research & Consulting Ltd.



---

While we have taken reasonable steps to ensure this report is accurate, WRAP does not accept liability for any loss, damage, cost or expense incurred or arising from reliance on this report. Readers are responsible for assessing the accuracy and conclusions of the content of this report. Quotations and case studies have been drawn from the public domain, with permissions sought where practicable. This report does not represent endorsement of the examples used and has not been endorsed by the organisations and individuals featured within it. This material is subject to copyright. You can copy it free of charge and may use excerpts from it provided they are not used in a misleading context and you must identify the source of the material and acknowledge WRAP's copyright. You must not use this report or material from it to endorse or suggest WRAP has endorsed a commercial product or service. For more details please see WRAP's terms and conditions on our website at [www.wrap.org.uk](http://www.wrap.org.uk)

## 1.0 Introduction

The Waste and Resource Action Programme (WRAP), on behalf of the Denbighshire County Council (DCC), has instructed Eunomia Research & Consulting Ltd (Eunomia) to prepare an application for a bespoke Environmental Permit under the Environmental Permitting (England and Wales) Regulations 2010 (as amended).

DCC own and will operate the proposed Waste Transfer Station (WTS) located in the Colomendy Trading Estate, Denbigh, Denbighshire, LL16 5US. The site will operate as a non-hazardous and hazardous WTS with material arriving from household and commercial premises collected by DCC and small commercial waste operators, as well as highways materials collected by the council collected. A permit to accept up to 55,000 tonnes of waste material per year (tpa) is being sought, although the initial throughput is estimated to be approximately 41,400tpa.

This document summarises the permit application and site setting. More detail and technical information can be found in the supporting documents as follows:

- Application Forms (Parts A, B2, B4 and F1);
- DCC.015 OPRA Spreadsheet;
- DCC.001 Site Condition Report;
- DCC.004 Environmental Management System (EMS) Summary;
- DCC.002 Environmental Risk Assessment;
- DCC.003 Operating Techniques Document;
- DCC.005 Fire Prevention and Mitigation Plan (FPMP);
- DCC.011 Odour Management Plan
- DCC.015 Odour Impact Assessment;
- DCC.012 Noise Management Plan
- DCC.016 Noise Impact Assessment;
- DCC.013 Pest Management Plan
- DCC.014 Dust Management Plan; and
- Supporting Drawings.

This Non-Technical Summary meets Natural Resources Wales's (NRW) requirements to provide an explanation of what is being applied for, a summary of the regulated facility, summary of the key technical standards and control measures arising from the environmental risk assessment for the facility.

## 2.0 Location of the Site

The WTS is being developed on a site which was previous unoccupied within the Colomendy Industrial Estate which is located off the A543 and A525 roundabout. The site is in the northern area of Denbigh town and was granted planning permission on the 13th of May 2020 (planning reference: 01/2019/1011/PF). There are a range of industrial and commercial buildings that border the site to the south and southeast. Beyond the industrial estate to the south and east are residential properties (approximately 840m and 540m respectively). To the north of the site is agricultural land. The west of the site is bounded by a road which runs north-south adjacent to the industrial estate, beyond which is woodland followed by an aggregate quarry (approximately 420m to the east of the site).

The overall layout of the site is detailed in Figure 8-1. The site comprises of six servicing areas:

1. **Waste Transfer Building (eastern area of the site)** – with internal waste storage bays for residual waste, paper, a sealed container for Absorbent Hygiene Products (AHPs), bays for cardboard and paper, mixed cans and plastics and sorted

metals and plastics. There will be a sorting line for cardboard, mixed cans and plastics. There are also two balers and office and welfare facilities within the building, and five bays located externally to the south of the building, for the baled materials.

2. **External Waste Storage/ Quarantine Area (eastern area of the site) -** Outside the WTS building, to the east, there is additional parking for operational vehicles, as well as uncovered bays for quarantine, waste glass, and a storage bay that accommodates containers for textiles, WEEE, batteries, and aerosols. Any large WEEE, for example fridges and freezers will be stored external to the WEEE container, but within this bay.
3. **Secondary Waste Storage Shed (central area of the site) –** with covered storage bays for gully waste, recyclable highways waste, green waste bays and a covered food waste sealed skip area. Furthermore, there is storage space for a road sweeper and a small amount of staff parking.
4. **External Waste Bays (northern area of the site) –** with uncovered storage bays for fly-tipped waste, topsoil, non-recyclable highways waste, and a covered bay for road sweepings.
5. **Parking (western area of the site) –** with dedicated parking for staff vehicles, and fleet parking.
6. **Vehicle Infrastructure and SUDs (southern area of site) –** there is a vehicle wash area, a refuelling area (with Ad Blue and diesel tanks) and two weighbridges located at the southern area of the site, along with SUDs features and the attenuation.

### 3.0 Operations at the site

The site will operate as a waste transfer facility accepting and processing approximately 41,400 tpa of non-hazardous and or hazardous wastes arising from household and commercial premises, collected by DCC and small commercial operators, as well as highways materials collected by DCC. The non-hazardous waste accepted on site include separately collected dry recyclables (mixed, cans and plastics), glass, AHPs, food waste, textiles, unprocessed green waste, textiles, residual waste, paper, cardboard, and highways materials. The hazardous wastes accepted on the site are WEEE, batteries, aerosols and some highways wastes.

Treatment operations are limited to manual and / or mechanical sorting and / or screening, baling and bulking of non-hazardous waste only. Treatment and / or storage of non-hazardous and hazardous waste is for the purpose of recovery or disposal.

The activities proposed on site are:

- R3: Recycling/reclamation of organic substances which are not used as solvents
- R4: Recycling/reclamation of metals and metal compounds
- R5: Recycling/reclamation of other inorganic materials
- R13: Storage of wastes pending any of the operations numbered R1 to R12 (excluding temporary storage, pending collection, on the site where it is produced)
- D9: Physico-chemical treatment not specified elsewhere in Annex II which results in final compounds or mixtures which are discarded by means of any of the operations numbered D1 to D8 and D10 to D12
- D14: Repackaging prior to submission to any of the operations D1 to 13
- D15: Storage pending any of the operations numbered D1 to D14 (excluding temporary storage, pending collection, on the site where it is produced)

## **4.0 Purpose of the Permit Application**

DCC are constructing a new WTS, on previously undeveloped land for which they have obtained planning permission, to accommodate changes to their waste collection services from September 2023, moving from a co-mingled collections to kerbside sort. As such, a new strategically placed WTS is required to allow the authority to bulk, sort and/or bale up to 55,000 tonnes per annum of hazardous and non-hazardous waste.

## **5.0 Environmental Permit Application Fee**

The fee associated with this bespoke Environmental Permit application has been calculated in accordance with NRW's OPRA guidance for Waste Facilities.<sup>1</sup> The site classification is A11 – Household, Commercial, and Industrial Waste Transfer Station. As such the correct fee for this application is considered to be £8,050.

The OPRA spreadsheet is enclosed within the Environmental Permit application.

## **6.0 Risk Assessments**

### **Site Condition Survey**

A site condition survey (reference DCC.001 Site Condition Report) has been prepared as part of this application to establish the baseline environmental conditions within the proposed Environmental Permit boundary. The SCR has been prepared in accordance with Natural Resources Wales (NRW) guidance H5 (version 5), October 2014.

The facility will be operated with due regard to the conditions of the Environmental Permit and all relevant environmental legislation to ensure that the site does not pose a significant risk to the surrounding human and natural environment.

### **Environmental Risk Assessment**

An environmental risk assessment (ERA) (reference DCC.002 Environmental Risk Assessment) has been carried out to assess the environmental risk posed by the materials recovery site. This bespoke permit application is based on a variation to a standard rules permit (SR2008 No 3: household, commercial and industrial waste transfer station with treatment). The ERA details the standard risk assessment where the proposed activities present no additional risk to a standard rules permitted activity. Where additional risk is present, it includes appropriate additional control measures.

### **Operational Techniques Document**

The site will be operated in accordance with the operating techniques document (reference DCC.003 Operating Techniques Document) which details the following regarding the materials recovery site:

- Management;
- Site operations including waste acceptance procedures;
- Emissions and monitoring; and
- Information.

Operational management procedures will ensure that:

---

<sup>1</sup> [https://naturalresources.wales/media/681244/2017-new-charge-guidance-17\\_18.pdf](https://naturalresources.wales/media/681244/2017-new-charge-guidance-17_18.pdf)

- The risks that the activities pose to the environment are identified;
- The measures that are required to minimise the risks are identified;
- The activities are managed in accordance with the management system and operating techniques document;
- Performance against the management system is audited at regular intervals; and
- The Environmental Permit is complied with.

The mitigation measures are outlined in the operating techniques and in the ERA.

## **7.0 Management and Compliance On-Site**

The operator will follow regulatory guidance in operating the site to a written Environment Management System (EMS) meeting the requirements of NRW, which will be regularly reviewed. The summary of the EMS document is included in support of this application (submitted as supporting document DCC.004 Environment Management System (EMS) Summary).

The site is also subject to a Fire Prevention & Management Plan (FPMP) which meets current NRW guidance. A copy of the FPMP, is included in support of this application (submitted as supporting document DCC.005 Fire Prevention and Mitigation Plan (FPMP)). All staff engaged on the site are fully trained on fire prevention and mitigation measures, monitoring activities, and the emergency procedures on site.

The operator will provide Technically Competent Managers (David Driver and Philip Gaffney), at the site to manage all site activities. Evidence of this is included in support of this application (submitted as supporting document DCC.006 Technical Competency Evidence).

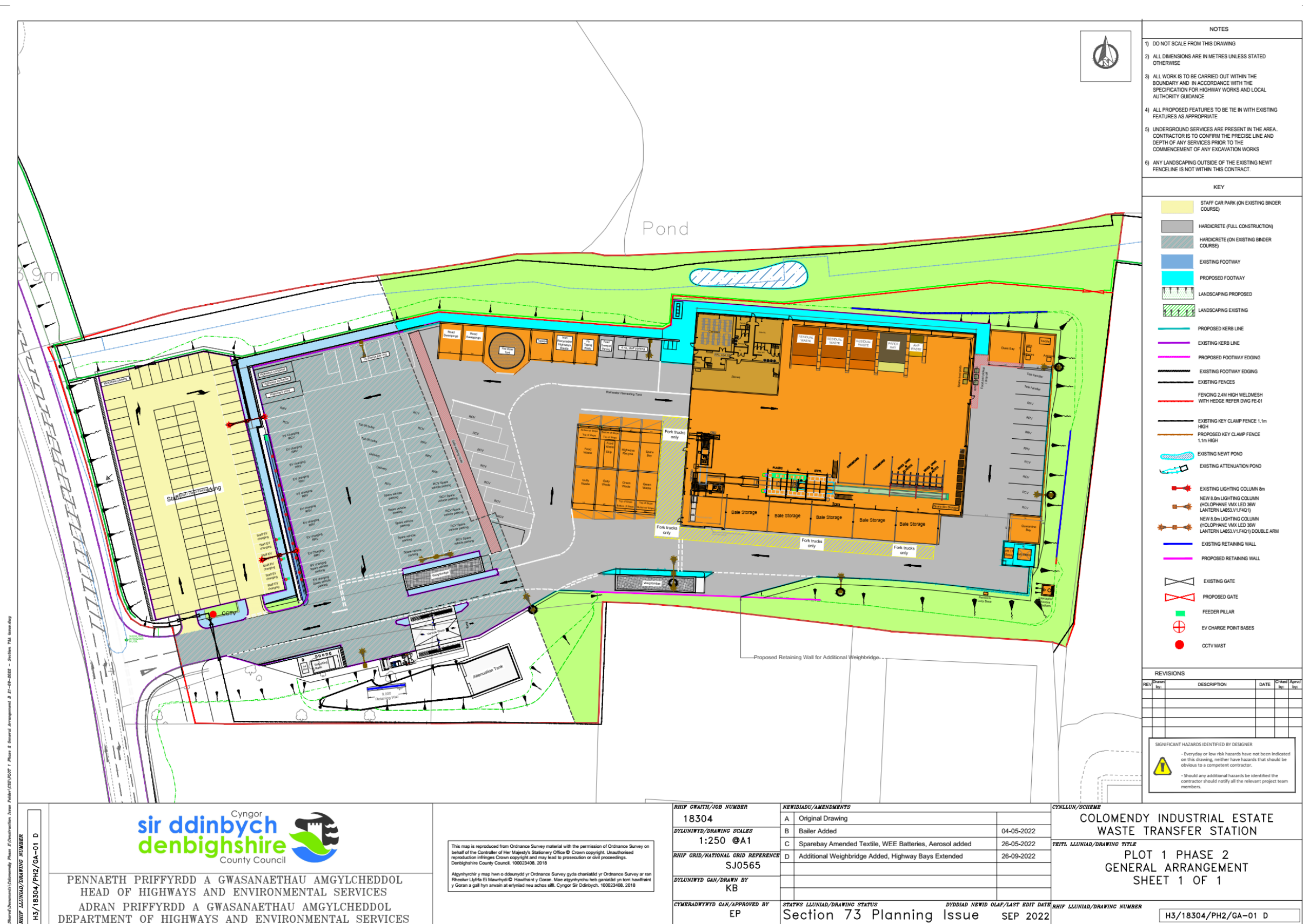
## **8.0 Conclusion**

The overall conclusion from the studies undertaken as part of this application is that there is unlikely to be a significant environmental impact as a result of the proposed activities at the WTS.

DCC is fully committed to ensuring the highest standards are met and will undertake its activities in a manner consistent with best industrial practices and in accordance with the site's management system.



### Figure 8-1: Site Layout



[www.wrapcymru.org.uk/ccp](http://www.wrapcymru.org.uk/ccp)

---

