

Year 2023
Quarter 3

First day of quarter 01/07/2023

Last day of quarter 30/09/2023

Date of first Sunday for which 4 or more days in the following week fall within the quarter 02/07/2023

Date of last Sunday for which 4 or more days in the following week fall within the quarter 24/09/2023

Number of weeks within quarter 13

W1 Concentrations - Long sea outfall

Weeks run from Sunday to the following Saturday - all weeks with four or more days within the quarter are reported
 Uncertainty of measurement only applied to values exceeding permitted limit.

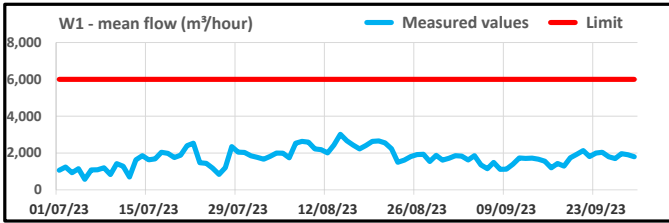
Parameter	Weekly average concentrations in mg/l, reported as measured and with uncertainty at limit removed																													
	Suspended Solids	Suspended Solids - Unc.	COD	COD - Unc.	BOD	BOD - Unc.	Sulphides	Sulphides - Unc.	Thiocyanate	Thiocyanate - Unc.	Cyanide	Cyanide - Unc.	PAH	PAH - Unc.	Phenols	Phenols - Unc.	Ammonia + Nitrite + Nitrate	Ammonia + Nitrite + Nitrate - Unc.	Iron	Iron - Unc.	Lead	Lead - Unc.	Zinc	Zinc - Unc.	Nickel	Nickel - Unc.	Total Chromium	Total Chromium - Unc.	Total Hydrocarbons	Total Hydrocarbons - Unc.
Limit	150		220		20		0.1		4		0.1		0.05		0.5		50		5		0.5		2		0.5		0.5		5	
Uncertainty (at limit)	54		23.6		17.90%		0.01		0.4		0.01				0.05		5		0.5		0.05		0.09		0.05		0.05		1	
Week commencing																														
02 July 2023	50		37		10.6		0.02		0.37		0.09		0.001		0.03		33		4.30		0.09		1.2		0.09		0.09		1.4	
09 July 2023	72		84		10.0		0.10		2.74		0.04		0.001		0.01		28		4.63		0.09		1.1		0.09		0.09		0.8	
16 July 2023	86		63		11.8		0.02		2.22		0.02		0.013		0.01		14		10.90	10.40	0.13		5.6	5.55	0.09		0.09		0.8	
23 July 2023	48		48		3.0		0.02		2.68		0.02		0.015		0.01		17		4.08		0.09		2.6	2.55	0.09		0.09		1.0	
30 July 2023	31		40		1.8		0.02		0.01		0.01		0.001		0.01		9		2.18		0.09		0.8		0.09		0.09		1.0	
06 August 2023	44		40		6.2		0.02		0.28		0.02		0.000		0.01		10		4.54		0.10		0.6		0.09		0.09		3.7	
13 August 2023	43		27		3.6		0.03		0.12		0.02		0.007		0.01		15		3.81		0.09		0.5		0.09		0.09		2.1	
20 August 2023	35		31		5.4		0.02		0.14		0.02		0.001		0.01		14		4.56		0.09		1.4		0.09		0.09		1.0	
27 August 2023	22		37		9.0		0.02		0.11		0.02		0.000		0.05		14		1.59		0.09		1.0		0.09		0.09		1.0	
03 September 2023	37		42		10.7		0.02		0.06		0.10		0.001		0.11		17		2.41		0.09		2.6	2.47	0.09		0.09		1.4	
10 September 2023	35		41		5.2		0.03		0.01		0.02		0.001		0.01		11		1.13		0.09		0.9		0.09		0.09		0.6	
17 September 2023	50		26		4.1		0.02		0.03		0.03		0.001		0.01		17		3.40		0.09		0.3		0.09		0.09		2.6	
24 September 2023	24		26		6.1		0.02		0.43		0.02		0.001		0.01		17		2.87		0.09		0.5		0.09		0.09		2.3	
Number > Limit + Unc.		0		0		0		0		0		0		0		0		0		1		0		3		0		0		0

* The following Part A Notifications have been submitted for Q3:

Part A	Breach	Week Commencing / Date	Date submitted
SN5_23_36A	W1 LSO Zn weekly average breach	16/07/2023	24/07/2023
SN5_23_40A	W1 LSO Fe weekly average breach	16/07/2023	24/07/2023
SN5_23_42A	W1 LSO Zn weekly average breach	23/07/2023	31/07/2023
SN5_23_52A	W1 LSO Zn weekly average breach	03/09/2023	11/09/2023

W1 Flow

		Average flow	
Daily mean	Minimum	570	m ³ /hour
	Maximum	3,015	m ³ /hour
	Limit	6,000	m ³ /hour
	No. > Limit	0	



Date	Parameter Average flow	
	Units	m ³ /hour
	Limit	6,000
01 July 2023		1,060
02 July 2023		1,241
03 July 2023		934
04 July 2023		1,145
05 July 2023		570
06 July 2023		1,083
07 July 2023		1,092
08 July 2023		1,200
09 July 2023		826
10 July 2023		1,420
11 July 2023		1,280
12 July 2023		700
13 July 2023		1,630
14 July 2023		1,860
15 July 2023		1,631
16 July 2023		1,680
17 July 2023		2,038
18 July 2023		1,978
19 July 2023		1,759
20 July 2023		1,883
21 July 2023		2,400
22 July 2023		2,534
23 July 2023		1,473
24 July 2023		1,442
25 July 2023		1,178
26 July 2023		839
27 July 2023		1,204
28 July 2023		2,345
29 July 2023		2,044
30 July 2023		2,032
31 July 2023		1,852
01 August 2023		1,762
02 August 2023		1,663
03 August 2023		1,813
04 August 2023		2,002
05 August 2023		1,989
06 August 2023		1,743
07 August 2023		2,533
08 August 2023		2,634
09 August 2023		2,592
10 August 2023		2,222
11 August 2023		2,185
12 August 2023		2,006
13 August 2023		2,433
14 August 2023		3,015
15 August 2023		2,668
16 August 2023		2,434
17 August 2023		2,226
18 August 2023		2,405
19 August 2023		2,628
20 August 2023		2,657
21 August 2023		2,545
22 August 2023		2,228
23 August 2023		1,496
24 August 2023		1,613
25 August 2023		1,802
26 August 2023		1,915
27 August 2023		1,933
28 August 2023		1,542
29 August 2023		1,874
30 August 2023		1,618
31 August 2023		1,714
01 September 2023		1,855
02 September 2023		1,828
03 September 2023		1,619
04 September 2023		1,852
05 September 2023		1,353
06 September 2023		1,145
07 September 2023		1,487
08 September 2023		1,115
09 September 2023		1,124
10 September 2023		1,387
11 September 2023		1,730
12 September 2023		1,707
13 September 2023		1,720
14 September 2023		1,666
15 September 2023		1,554
16 September 2023		1,195
17 September 2023		1,428
18 September 2023		1,286
19 September 2023		1,737
20 September 2023		1,931
21 September 2023		2,132
22 September 2023		1,806
23 September 2023		2,000
24 September 2023		2,039
25 September 2023		1,797
26 September 2023		1,695
27 September 2023		1,964
28 September 2023		1,908
29 September 2023		1,798
30 September 2023		2,041

W3 Concentrations - ABO

Weeks run from Sunday to the following Saturday - all weeks with four or more days within the quarter are reported.

Uncertainty of measurement only applied to values exceeding permitted limit.

Only sampled when flow present (generally after heavy rain).

Weekly average concentrations in mg/l, reported as measured (uncertainty not taken into account)				
Parameter	Suspended Solids	Suspended solids - Unc	Total Hydrocarbons	Total Hydrocarbons - Unc
Limit	200		20	
Uncertainty (at limit)	72		4.4	
Week commencing				
02 July 2023				***
09 July 2023				***
16 July 2023	6		1.6	
23 July 2023	25		7.0	
30 July 2023	27		5.2	
06 August 2023	15		1.8	
13 August 2023	16		2.1	
20 August 2023	27		2.2	
27 August 2023	18		2.1	
03 September 2023	16		0.6	
10 September 2023	23		3.7	
17 September 2023	37		5.7	
24 September 2023	98		3.2	
Number > Limit		0		0

*** No samples taken during this week;

due to low flow conditions effluent did not overtip weir to Abbey Beach Outfall.

The following Part A Notifications have been submitted for Q3:

Part A	Breach	Week Commencing / Date	Date submitted
SN5_23_56A	W3 ABO TSS daily breach	30/09/2023	04/10/2023

W4 Concentrations - Iron Ore Stockyard into Afan Estuary

Only sampled when flow present (generally after heavy rain).

Values reported as measured (uncertainty not taken into account)					
Parameter		Suspended solids (mg/l)	Total Fe (mg/l)	Soluble Fe (mg/l)	Oil and grease
Date	pH				
07 July 2023	8.3	74	0.5	0.2	3.6
08 August 2023	8.9	610	0.2	0.0	1.6
11 September 2023	8.4	32	4.6	0.2	1.2

W5 Concentrations - Cooling Water discharge into Port Talbot Dock

Uncertainty of measurement only applied to values exceeding permitted limit.

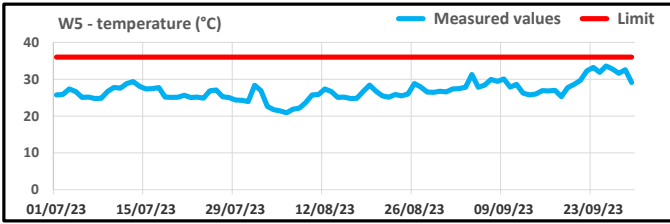
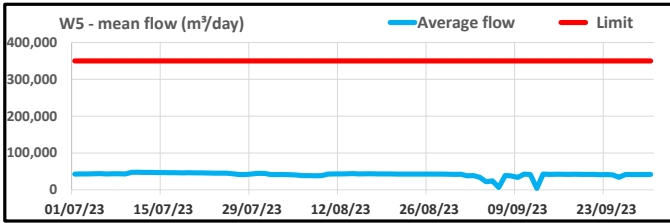
Suspended solids concentrations in mg/l, reported as measured (uncertainty not taken into account)				
Parameter	Inlet	Outlet	Difference	Difference - Unc.
Limit			20	
Uncertainty (at limit)			4.4	
Date				
02 July 2023	2.2	18.7	16.5	
09 July 2023	0.9	18.7	17.7	
16 July 2023	1.3	2.9	1.7	
23 July 2023	1.4	2.2	0.8	
30 July 2023	2.2	3.6	1.4	
06 August 2023	1.4	2.2	0.8	
13 August 2023	1.5	1.3	-0.2	*
20 August 2023	1.7	1.5	-0.2	*
27 August 2023	1.0	1.2	0.2	
03 September 2023	1.5	1.5	0.0	
10 September 2023	4.4	1.4	-3.0	*
17 September 2023	1.8	1.2	-0.6	*
24 September 2023	2.4	2.6	0.2	
Number > Limit				0

* *Difference is compliant where inlet concentrations exceed outlet concentrations.*

*** *3TA down for essential maintenance, hence no 3TA return water sample received.*

W5 Flow and Temperature

		Daily mean flow	Temperature
Daily mean	Minimum	4,003 m ³ /day	21 °C
	Maximum	47,564 m ³ /day	34 °C
	Limit	350,000 m ³ /day	36 °C
	No. > Limit	0	0



*** 3TA on shutdown for essential maintenance, hence no return flow to the Docks.

Date	Parameter Average flow		Temperature	
	Units	m ³ /day	°C	
	Limit	350,000	36	
01 July 2023		42,946	350,000	25.7
02 July 2023		43,068	350,000	25.9
03 July 2023		43,109	350,000	27.4
04 July 2023		43,463	350,000	26.6
05 July 2023		43,807	350,000	25.1
06 July 2023		43,284	350,000	25.1
07 July 2023		43,650	350,000	24.8
08 July 2023		43,604	350,000	24.8
09 July 2023		43,119	350,000	26.7
10 July 2023		47,564	350,000	27.8
11 July 2023		47,555	350,000	27.6
12 July 2023		47,367	350,000	28.8
13 July 2023		47,164	350,000	29.3
14 July 2023		47,021	350,000	28.1
15 July 2023		47,033	350,000	27.4
16 July 2023		46,599	350,000	27.4
17 July 2023		46,455	350,000	27.7
18 July 2023		46,270	350,000	25.2
19 July 2023		46,335	350,000	25.1
20 July 2023		45,957	350,000	25.1
21 July 2023		45,950	350,000	25.7
22 July 2023		45,687	350,000	25.0
23 July 2023		45,433	350,000	25.2
24 July 2023		45,221	350,000	24.9
25 July 2023		45,320	350,000	26.9
26 July 2023		43,515	350,000	27.1
27 July 2023		41,560	350,000	25.2
28 July 2023		41,331	350,000	25.0
29 July 2023		42,989	350,000	24.4
30 July 2023		45,010	350,000	24.3
31 July 2023		44,566	350,000	24.0
01 August 2023		41,672	350,000	28.3
02 August 2023		41,597	350,000	26.9
03 August 2023		41,698	350,000	22.6
04 August 2023		41,112	350,000	21.8
05 August 2023		40,343	350,000	21.4
06 August 2023		38,510	350,000	20.9
07 August 2023		38,591	350,000	21.8
08 August 2023		38,334	350,000	22.2
09 August 2023		38,516	350,000	23.7
10 August 2023		42,946	350,000	25.7
11 August 2023		43,068	350,000	25.9
12 August 2023		43,109	350,000	27.4
13 August 2023		43,463	350,000	26.6
14 August 2023		43,807	350,000	25.1
15 August 2023		43,284	350,000	25.1
16 August 2023		43,650	350,000	24.8
17 August 2023		43,604	350,000	24.8
18 August 2023		43,119	350,000	26.7
19 August 2023		43,100	350,000	28.4
20 August 2023		43,066	350,000	26.7
21 August 2023		42,920	350,000	25.5
22 August 2023		42,753	350,000	25.1
23 August 2023		42,764	350,000	25.8
24 August 2023		42,561	350,000	25.5
25 August 2023		42,777	350,000	26.0
26 August 2023		42,798	350,000	28.8
27 August 2023		42,803	350,000	27.9
28 August 2023		42,650	350,000	26.5
29 August 2023		42,308	350,000	26.4
30 August 2023		41,865	350,000	26.8
31 August 2023		42,368	350,000	26.6
01 September 2023		38,338	350,000	27.3
02 September 2023		38,497	350,000	27.5
03 September 2023		33,954	350,000	27.8
04 September 2023		21,923	350,000	31.3
05 September 2023		24,607	350,000	27.8
06 September 2023		6,348	350,000	28.4
07 September 2023		38,864	350,000	30.0
08 September 2023		37,582	350,000	29.4
09 September 2023		33,707	350,000	30.1
10 September 2023		42,628	350,000	27.9
11 September 2023		41,526	350,000	28.6
12 September 2023		4,003	350,000	26.2
13 September 2023		42,649	350,000	25.7
14 September 2023		42,047	350,000	26.0
15 September 2023		42,318	350,000	26.9
16 September 2023		42,307	350,000	26.8
17 September 2023		41,863	350,000	27.0
18 September 2023		42,238	350,000	25.3
19 September 2023		41,965	350,000	27.8
20 September 2023		41,765	350,000	28.6
21 September 2023		41,724	350,000	29.7
22 September 2023		41,279	350,000	32.3
23 September 2023		41,643	350,000	33.2
24 September 2023		40,469	350,000	31.9
25 September 2023		33,786	350,000	33.6
26 September 2023		41,386	350,000	32.8
27 September 2023		41,438	350,000	31.6
28 September 2023		41,433	350,000	32.6
29 September 2023		41,523	350,000	29.1
30 September 2023		41,723	350,000	29.0