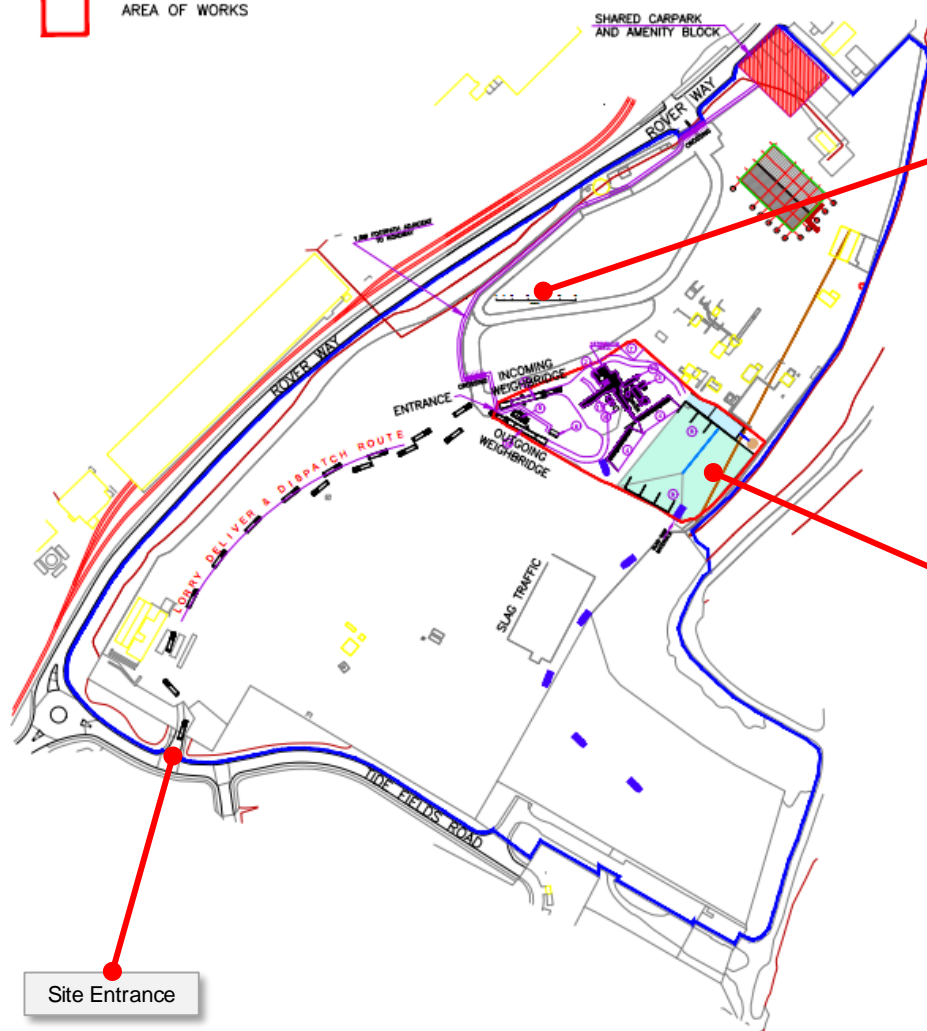


## LEGEND

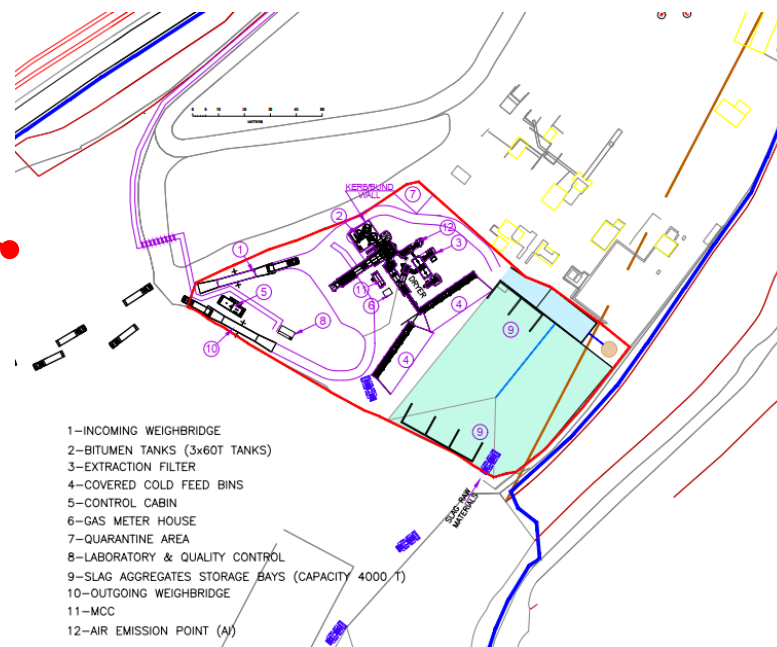
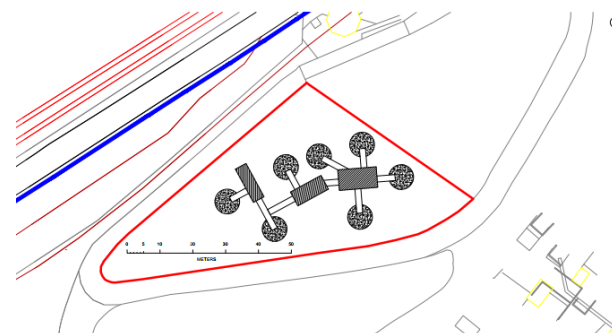
— DENOTES CELSA SITE OWNERSHIP  
AREA = 150,669m<sup>2</sup> (15.07ha)

□ AREA OF WORKS



Site Entrance

INTERIM AGGREGATE PRODUCTION AREA  
(CIRCA 3,380 M<sup>2</sup>)  
SCALE 1:500 ON A0



- 1-INCOMING WEIGHBRIDGE
- 2-BITUMEN TANKS (3x60T TANKS)
- 3-EXTRACTION FILTER
- 4-COVERED COLD FEED BINS
- 5-CONTROL CABIN
- 6-GAS METER HOUSE
- 7-QUARANTINE AREA
- 8-LABORATORY & QUALITY CONTROL
- 9-SLAG AGGREGATES STORAGE BAYS (CAPACITY 4000 T)
- 10-OUTGOING WEIGHBRIDGE
- 11-MCC
- 12-AIR EMISSION POINT (A)

Based on Harsco Metals and Minerals (2019). Asphalt Production at Celsa Cardiff, New Aggregate and Asphalt Plants at Celsa Cardiff, Location Plan, Option 7.5, Scale 1:1250, Project O 1994, REV 2, 26/06/19.

TITLE:

**Figure A3.  
Site Layout**

CLIENT:

Celsa Manufacturing (UK) Ltd

JOB REFERENCE:

018-1666

DATE:

8<sup>th</sup> July 2019

SCALE:

Not to Scale

REVISIONS:

No.	Date	Description
00	8/07/19	Final for report
-	-/-/-	-
-	-/-/-	-
-	-/-/-	-

DRAWN BY:

MJS

CHECKED BY:

SPR

