

Remaining stockpiled material is placed directly into a waiting dumper and placed in compacted layers to form the environmental bund in line with the schematic to the left.

Receptor: Treatment Works Operatives

Location of Boundary Monitoring Points (Dust, Noise and airborne Asbestos fibre monitoring)

Operating Site Boundary with railway line to the west, Tree lines to the north, east and south. No pedestrian or public access to the site.

Receptor: Holiday Park Residents

The stockpiled material will be visually screened and manually picked through with all visible ACM > then 40mm square removed and placed in lockable Asbestos skip for off-site disposal. Once removal is complete, the former base of the stockpile to be inspected and sampled ensuring all made ground materials have been removed.

Tipper

Excavator

Movement of stockpiled material to environmental bund location

Manual Picking of All ACM > than 40mm square

Site Cabins and lockable Asbestos skip for off-site disposal.

Receptor: Beach Walkers

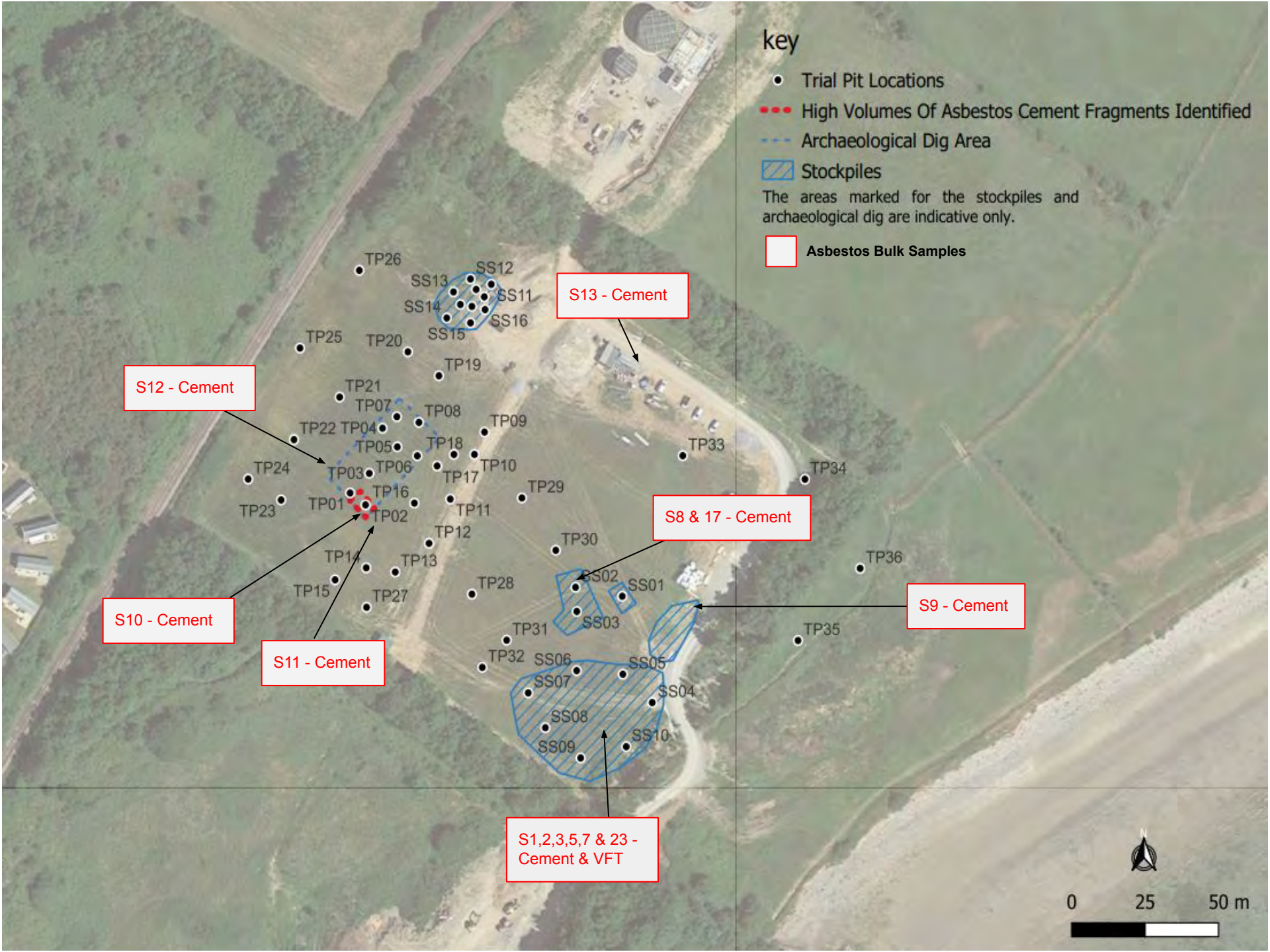
Access to working area along private track and through Gates controlled by Banksman. Out of hours and weekend CCTV security cameras protecting the site entrance and equipment will be utilised.

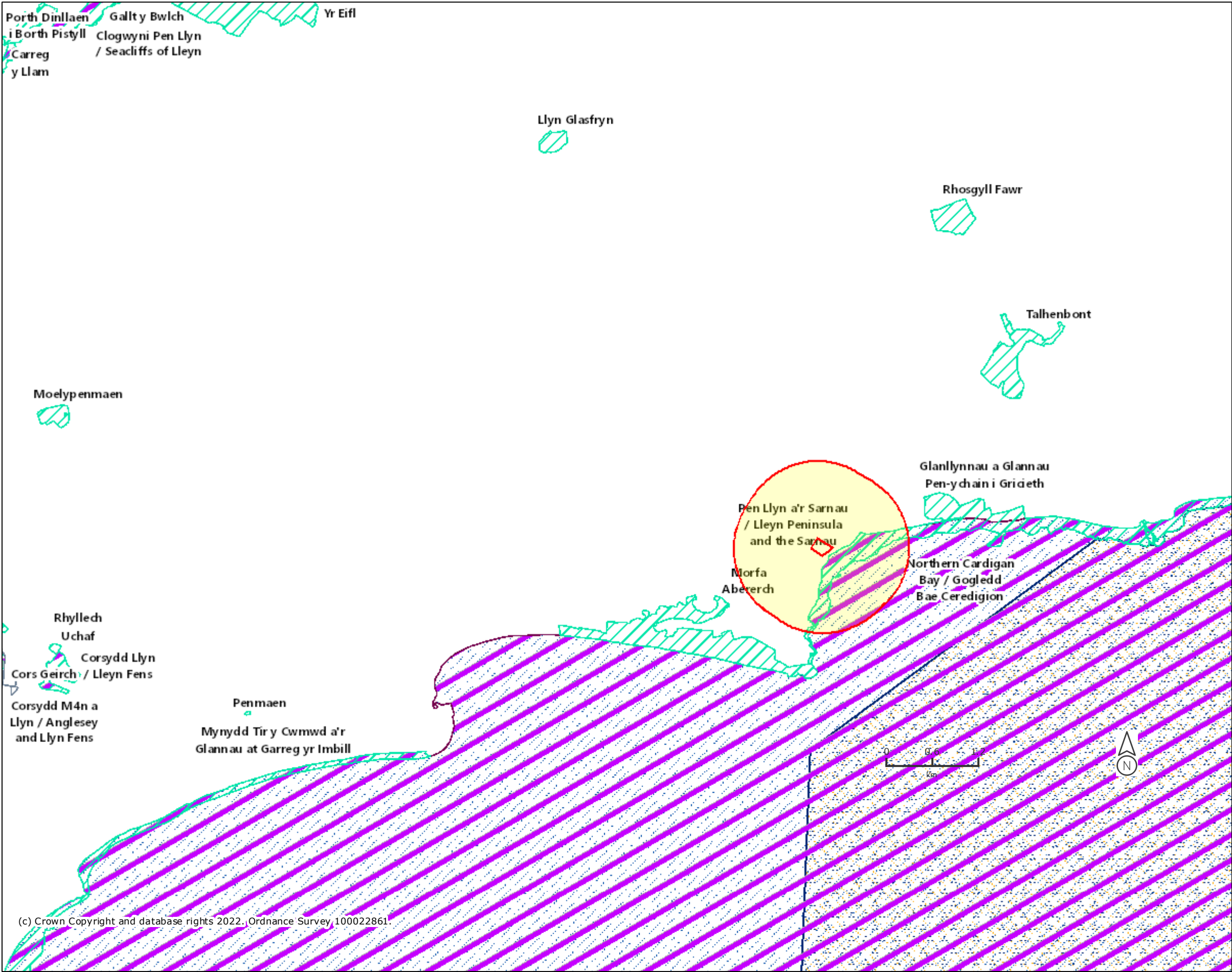
Drainage – No on-site drainage or interceptors – Ground only impacted by Asbestos.

Receptor: Holiday Park Residents

Areas of Waste Soils and contaminated material for remediation by the mobile plant is detailed on next page.

Protected Sites within 1km (SACs, SPAs, RAMSAR and SSSIs) Detailed in 2No. pages.





Legend

- Ramsar Sites (Wales)
- Sites of Special Scientific Interest (Wales)
- Special Areas of Conservation (Wales)
- Special Protection Areas (Wales)

Special Areas of Conservation (Marine Components GB)

- Candidate
- Designated
- Possible

Special Protection Areas (Marine Components GB)

- Classified
- Potential
- Special Areas of Conservation (England)
- Special Protection Areas (England)

Projection = OSGB36
xmin = 231000
ymin = 332800
xmax = 251100
ymax = 342600

Map produced by MAGIC on 11 October, 2023.
Copyright resides with the data suppliers and the map must not be reproduced without their permission. Some information in MAGIC is a snapshot of the information that is being maintained or continually updated by the originating organisation. Please refer to the metadata for details as information may be illustrative or representative rather than definitive at this stage.

Site Check Report Report generated on Wed Oct 11 2023
You selected the location: Centroid Grid Ref: SH43713694

Sites of Special Scientific Interest (Wales)

Name	Eastings	Northings	First Notified	Last Notified	Confirmation Date	Cartesian Area (Ha)
Glanllynnau a Glannau Pen-ychain i Gricieth	246058.1695	337124.8593	15/06/1990	28/06/2001	20/03/2002	143.281385
Glanllynnau a Glannau Pen-ychain i Gricieth	246058.1695	337124.8593	15/06/1990	28/06/2001	20/03/2002	143.281385

Special Areas of Conservation (Wales)

Name	Reference	Marine	Date Notified	Cartesian Area (Ha)
Pen Llyn a'r Sarnau / Lleyen Peninsula and the Sarnau	UK0013117	y	13/12/2004	146034.7768
Pen Llyn a'r Sarnau / Lleyen Peninsula and the Sarnau	UK0013117	y	13/12/2004	146034.7768

Special Areas of Conservation (Marine Components GB)

UK Site Code	Site Name	Site Status	Status	Country	CP2 Region	Area (Ha)	Consultatix	Candidate SAC Date	Site of Conservation Importance Date	Designation Date	Agency
UK0013117	Pen Llyn a'r Sarnau/ Lleyen Peninsula and the Sarnau	SAC	Designated	Wales inshore	Irish Sea	146010.52		01/01/1996		01/12/2004	01/12/2004 NRW